

4

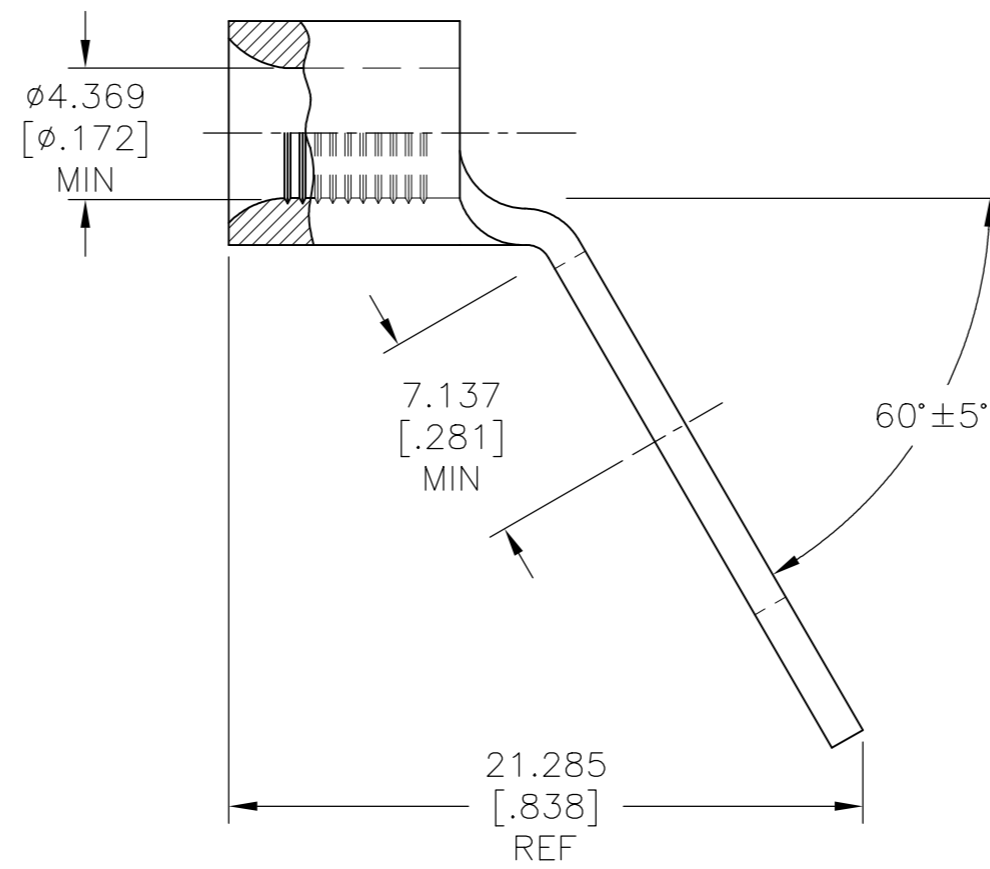
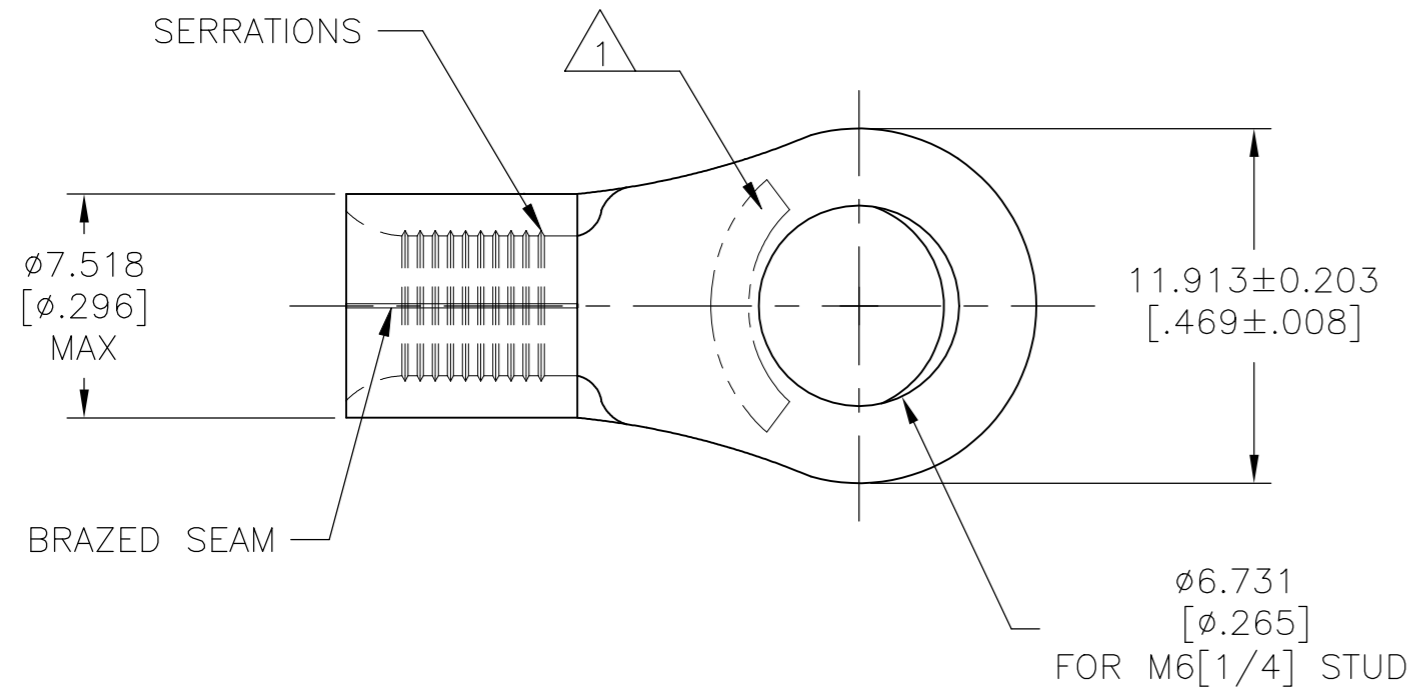
3

2

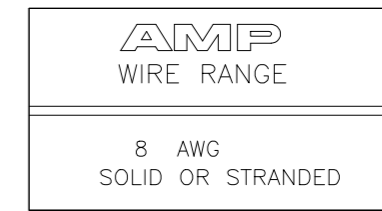
1

THIS DRAWING IS UNPUBLISHED. RELEASED FOR PUBLICATION. ALL RIGHTS RESERVED.

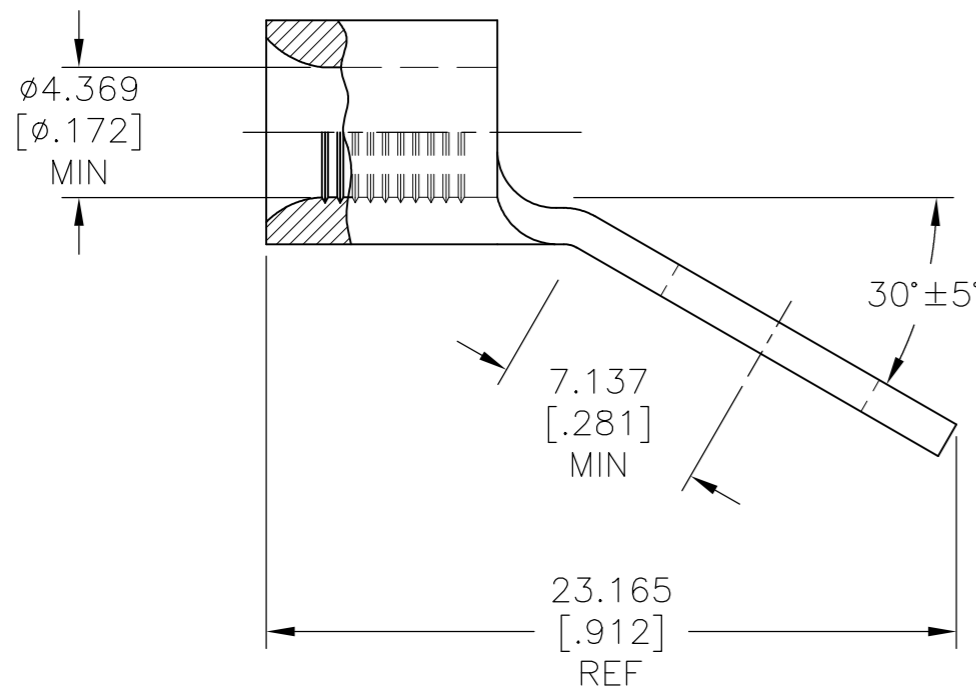
P	LTR	DESCRIPTION	DATE	DWN	APVD
2		REVISED PER ECO-16-014628	14OCT2016	RS	DR
A		REVISED PER ECO-18-007844	22MAY2018	RS	DR



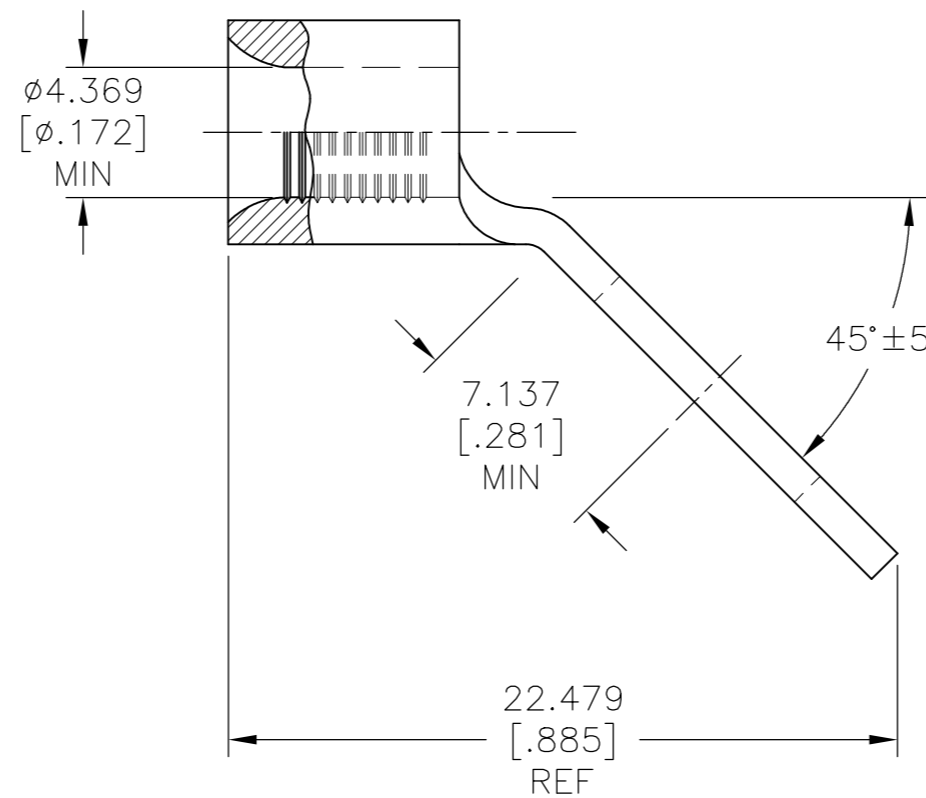
FOR 1958521-4 ONLY



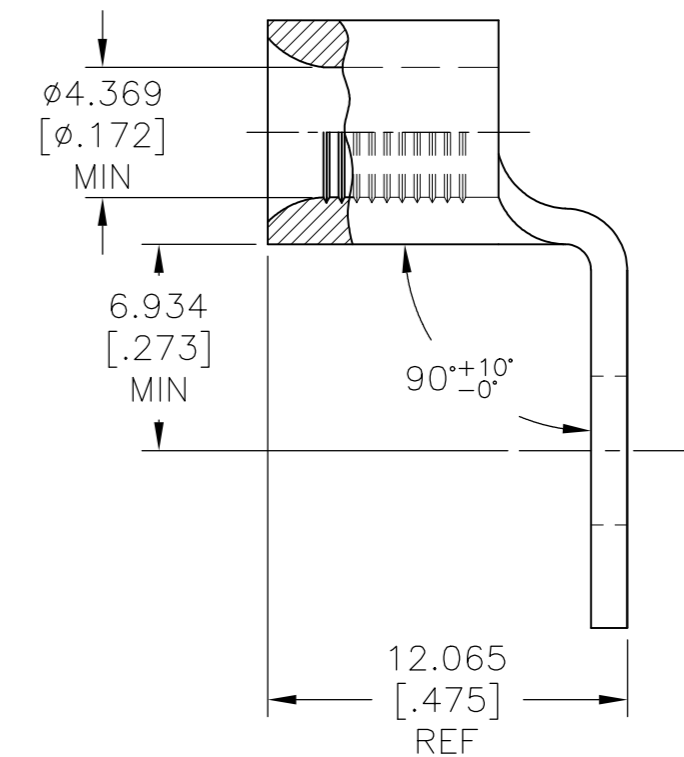
- 1 STAMP AMP 8* APPROX AS SHOWN.
- 2 COPPER PER ASTM B-152, ANNEALED, MATERIAL THK: 1.219±0.076 [.048±.003].
- 3 NICKEL PLATE 0.00762 [.000300] MIN. THK PER SAE AMS QQ-N-290.



FOR 1958521-1 ONLY



FOR 1958521-2 ONLY



FOR 1958521-3 ONLY

PRELIMINARY	QTY.	PACKAGE TYPE	BEND ANGLE	PART NUMBER
	100	LOOSE PIECE	60°	1958521-4
			90°	1958521-3
			45°	1958521-2
PRELIMINARY			30°	1958521-1

AMP INCORPORATED CUSTOMER SERVICE SYSTEMS		MAX RECOMMENDED OPERATING TEMPERATURE: 343°C[649°F] MAX
FOR ADDITIONAL PRODUCT INFORMATION OR COPIES OF DRAWINGS AND TECHNICAL DOCUMENTS	PRODUCT INFORMATION CENTER 1-800-522-6752	VOLTAGE RATING: NOT APPLICABLE
FOR APPLICATION TOOLING INFORMATION	TOOLING ASSISTANCE CENTER 1-800-722-1111	WIRE CROSS SECTIONAL AREA RANGE: 6.64-10.50mm ² [13,100-20,800] CIR MILS SOLID OR STRANDED
FOR ORDER ENTRY	1-800-526-5142	

THIS DRAWING IS A CONTROLLED DOCUMENT.		DWN RAVI S 22MAY2018	TE Connectivity Ltd.	
DIMENSIONS: mm [INCHES]	TOLERANCES UNLESS OTHERWISE SPECIFIED:	CHK ROHDE DANIEL F 22MAY2018	NAME ROHDE DANIEL F	
	0 PLC ± -	APVD ROHDE DANIEL F 22MAY2018	PRODUCT SPEC 108-32046	
	1 PLC ± -		APPLICATION SPEC 114-2162	
	2 PLC ± -		SIZE A2	CAGE CODE 00779
	3 PLC ± 0.127[.005]		DRAWING NO 1958521	RESTRICTED TO -
	4 PLC ± -		SCALE 4:1	SHEET 1 OF 1
MATERIAL 2	FINISH 3	WEIGHT	CUSTOMER DRAWING	REV A