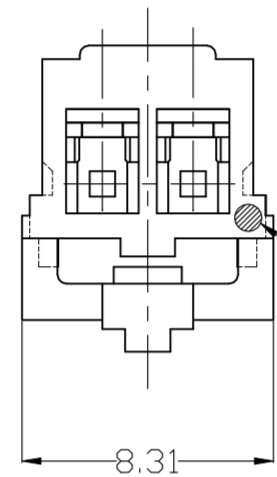
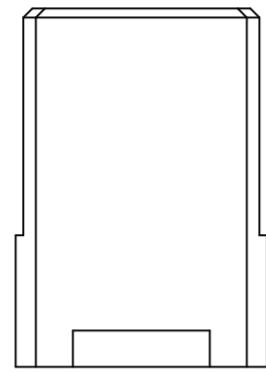
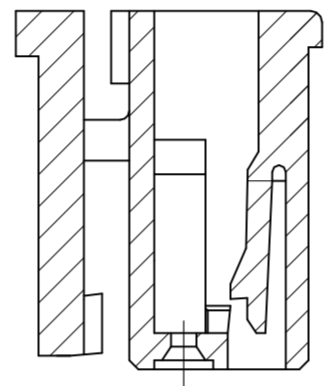


REVISIONS					
P	LTR	DESCRIPTION	DATE	DWN	APVD
F		REVISED PER ECR-23-195045	10MAY2024	C.X	L.C

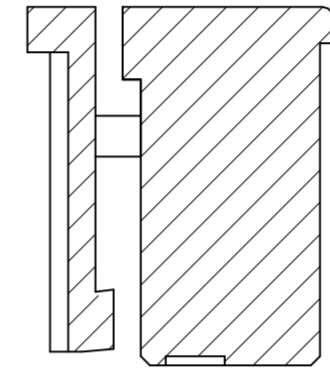
(2 POS.)



CIRCUIT NO.1 MARK



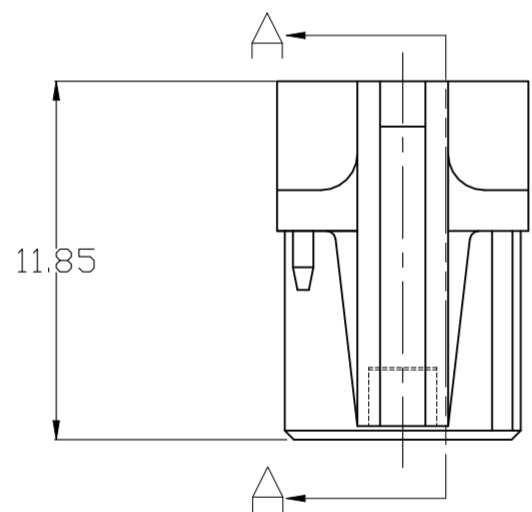
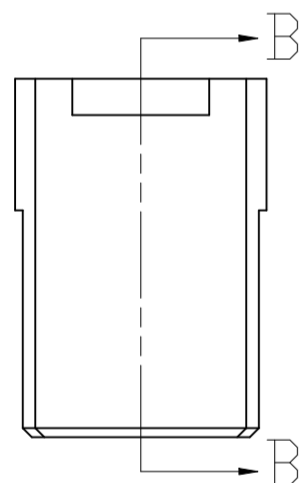
SEC. B-B



SEC. D-D

NOTE:

1. GENERAL TOLERANCE: ± 0.3 , $\pm 3^\circ$
2. MATERIAL: 66NYLON GF(UL94V-0)
3. MATING CONN. P/N: SEE TABLE
4. APPLICABLE CONTACT P/N:
1971031-1



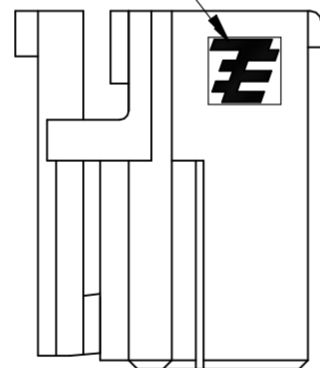
TRADE MARK

TRADE MARK

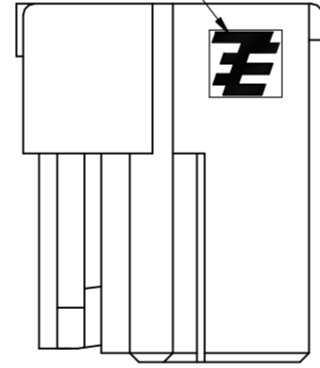
TRADE MARK

TRADE MARK

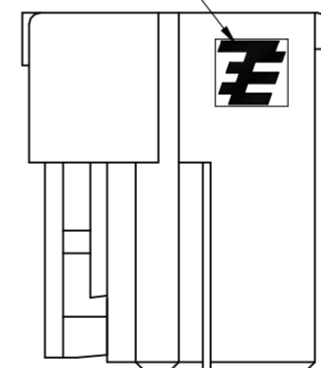
TRADE MARK



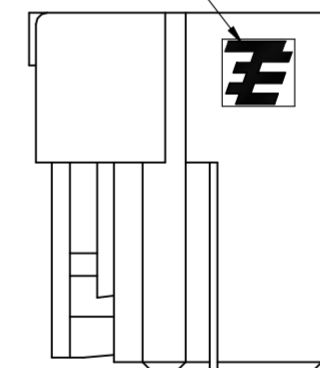
(2 POS.)



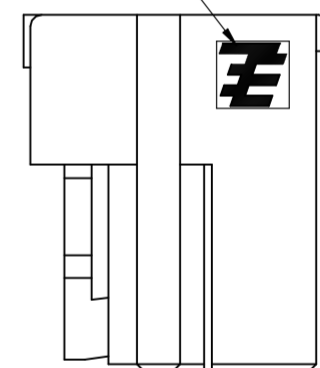
(3~4 POS.)



(5 POS.)



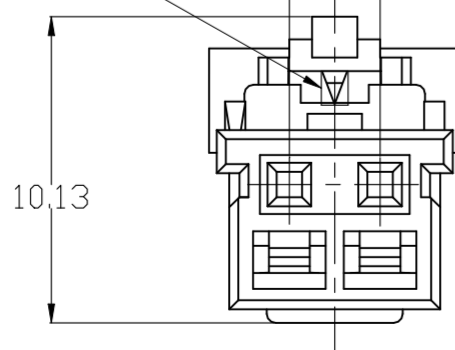
(6~8 POS.)



(9~10 POS.)

KEY TYPE NO.

PITCH 2.0



THIS DRAWING IS A CONTROLLED DOCUMENT.		DWN Liu Jimmy 11JUN2008			NAME	
DIMENSIONS: mm		CHK Wu hapye 11JUN2008			APVD Zhou Julian 11JUN2008	
TOLERANCES UNLESS OTHERWISE SPECIFIED:		PRODUCT SPEC 108-106001		APPLICATION SPEC 114-5425		RESTRICTED TO
MATERIAL SEE NOTE		FINISH -		WEIGHT 0	SCALE A2	CAGE CODE 00779
		CUSTOMER DRAWING		SCALE N/A	SHEET 1 of 4	REV F

THIS DRAWING IS UNPUBLISHED. RELEASED FOR PUBLICATION
 © COPYRIGHT - TE Connectivity ALL RIGHTS RESERVED.

REVISIONS					
P	LTR	DESCRIPTION	DATE	DWN	APVD
-	-	SEE SHEET 1	-	-	-

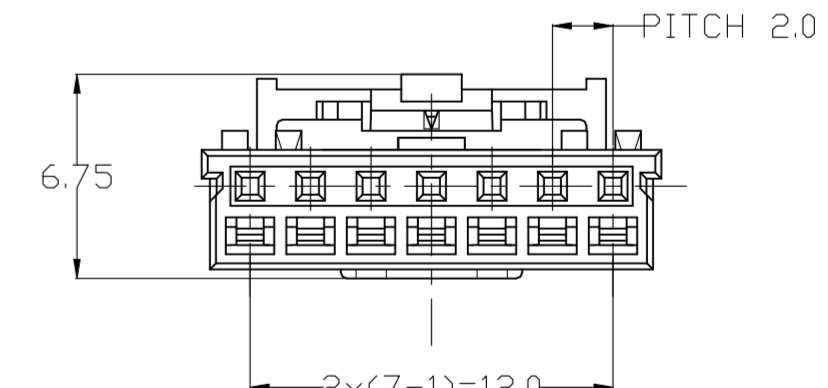
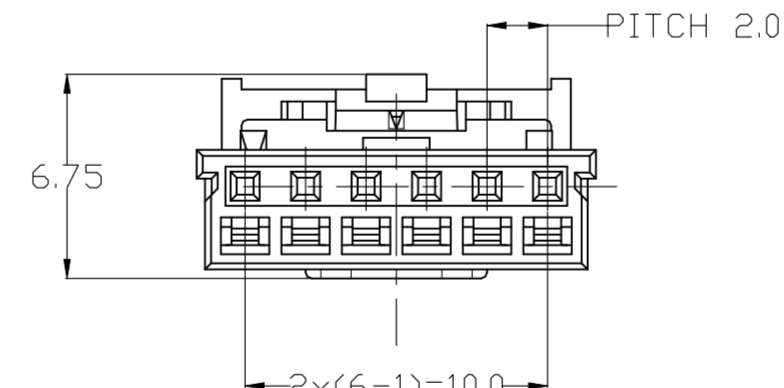
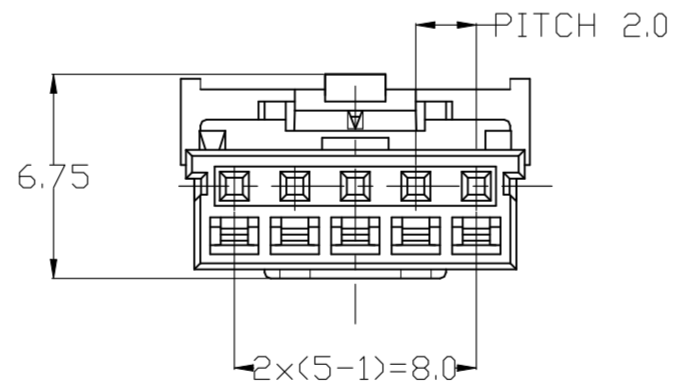
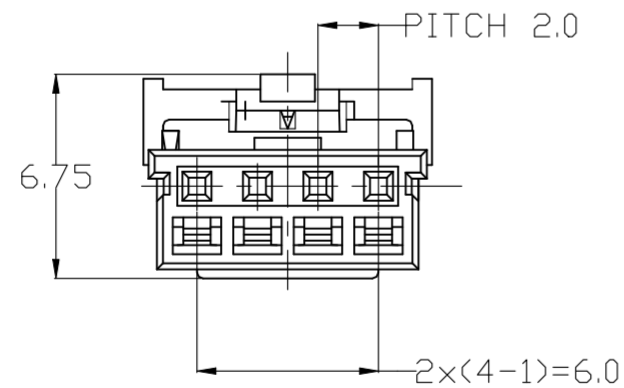
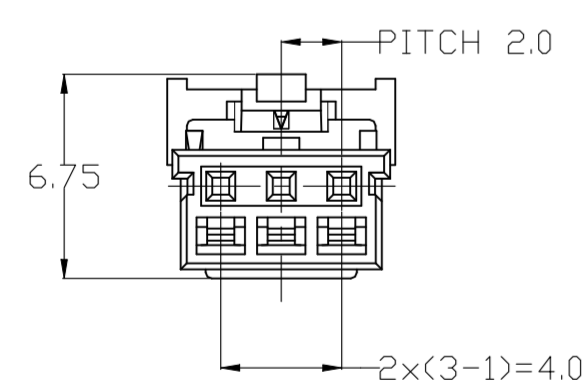
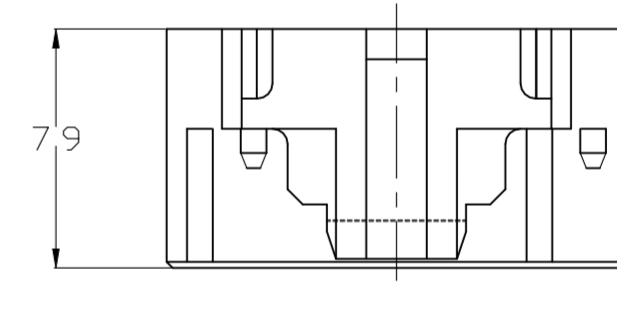
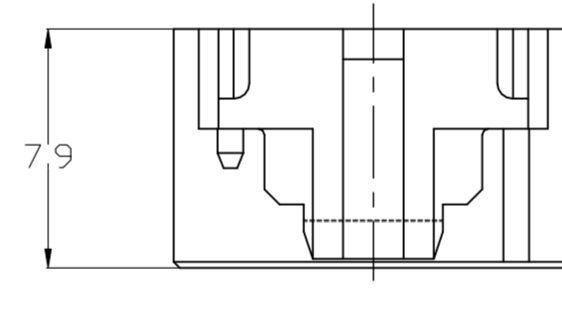
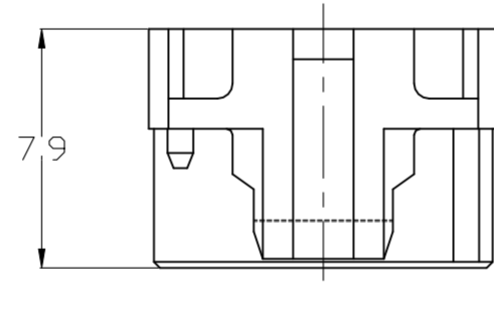
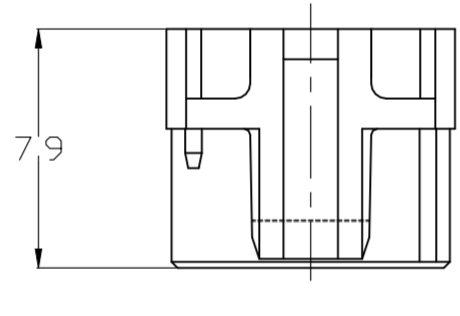
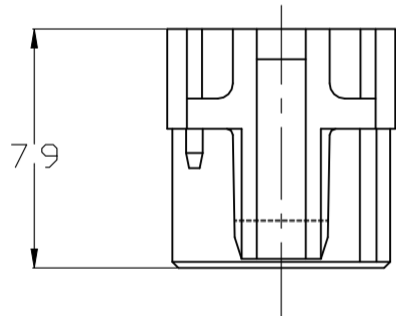
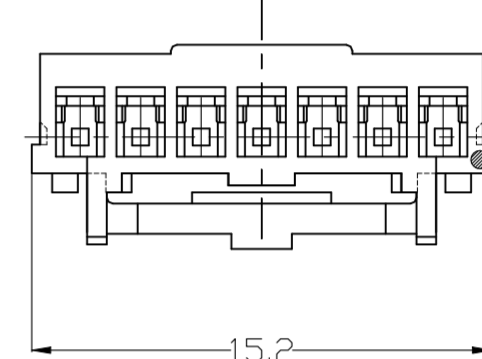
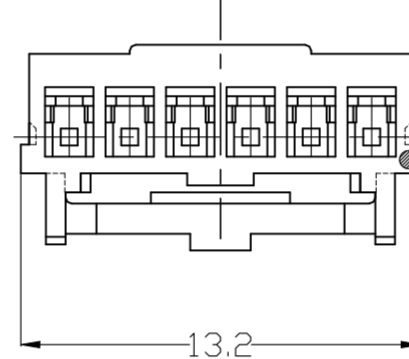
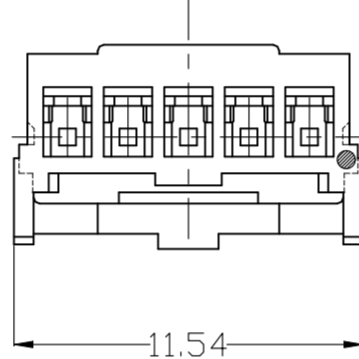
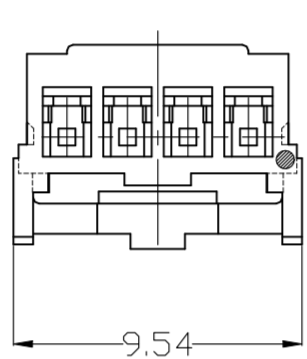
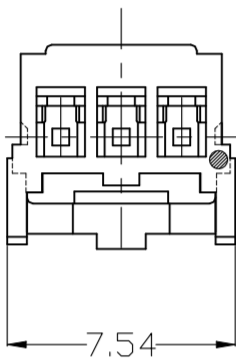
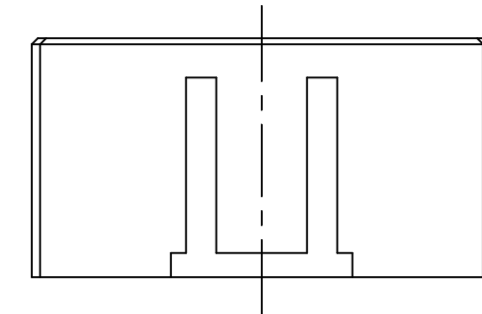
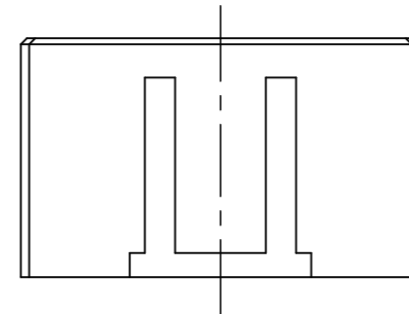
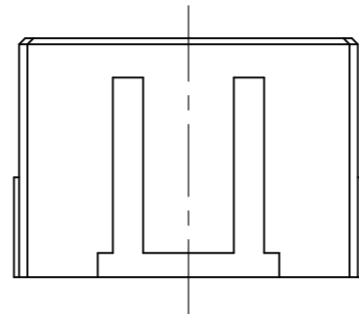
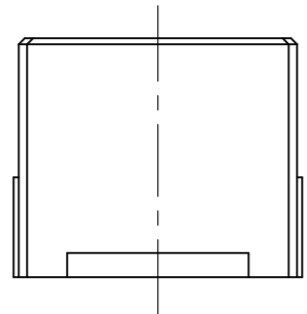
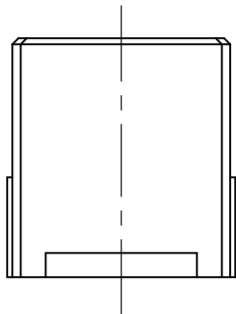
<3 POS.>

<4 POS.>

<5 POS.>

<6 POS.>

<7 POS.>



THIS DRAWING IS A CONTROLLED DOCUMENT.		DWN Liu Jimmy 11JUN2008	TE Connectivity		
DIMENSIONS: mm		CHK Wu Hapye 11JUN2008			
TOLERANCES UNLESS OTHERWISE SPECIFIED: 0 PLC ± 1 PLC ± 2 PLC ± 3 PLC ± 4 PLC ± ANGLES ±		APVD Zhou Julian 11JUN2008	NAME Grace Inertia Connector 2.0 EV Series Plug Housing		
MATERIAL		PRODUCT SPEC 108-106001	SIZE A2	CAGE CODE 00779	DRAWING NO. C=1971030
FINISH		APPLICATION SPEC 114-5425	SCALE N/A	SHEET 2 of 4	RESTRICTED TO -
		WEIGHT -	CUSTOMER DRAWING		
			REV F		

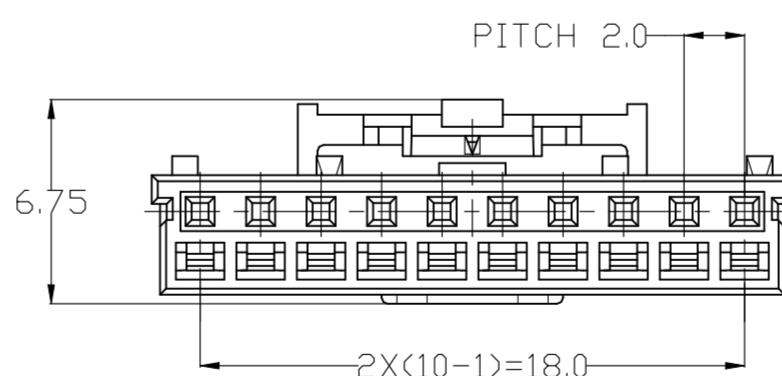
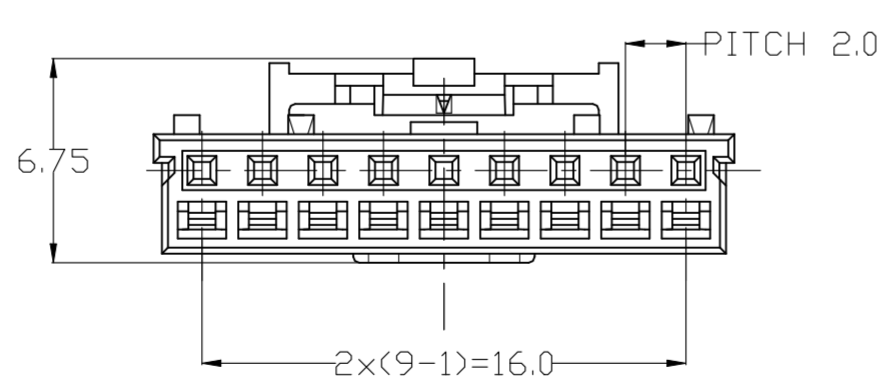
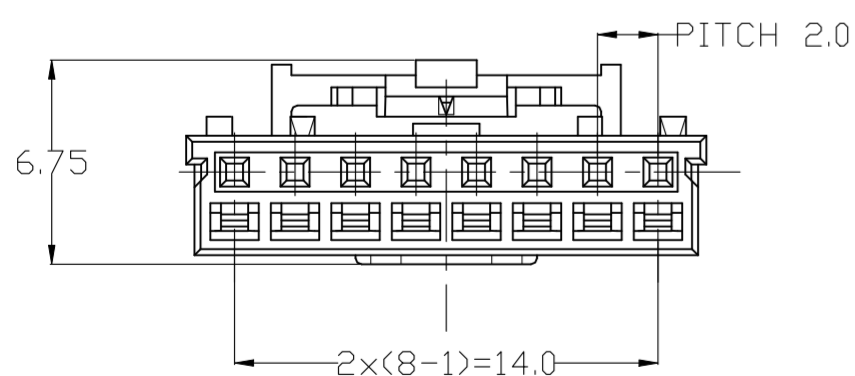
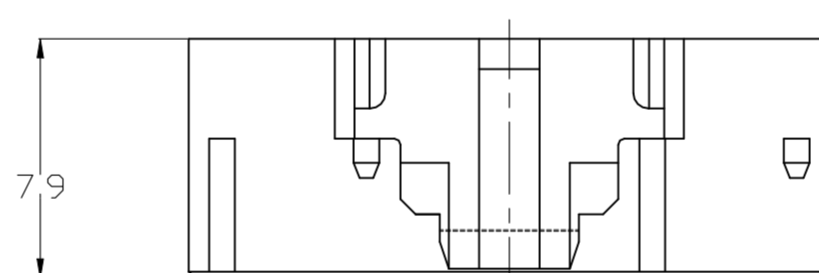
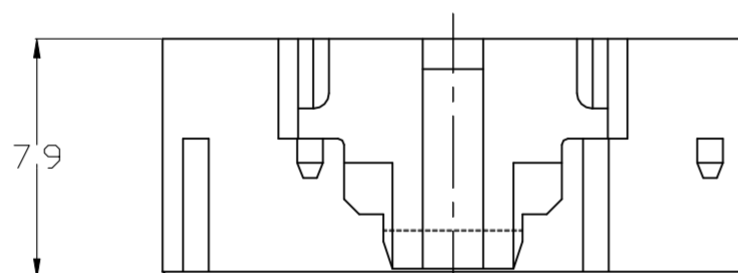
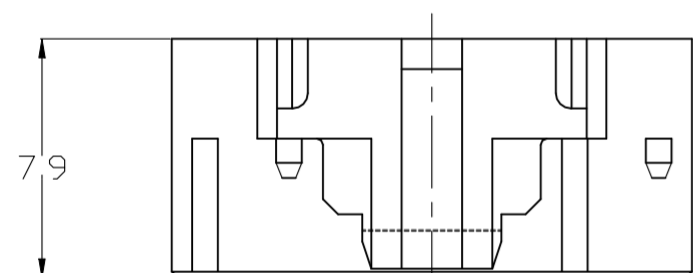
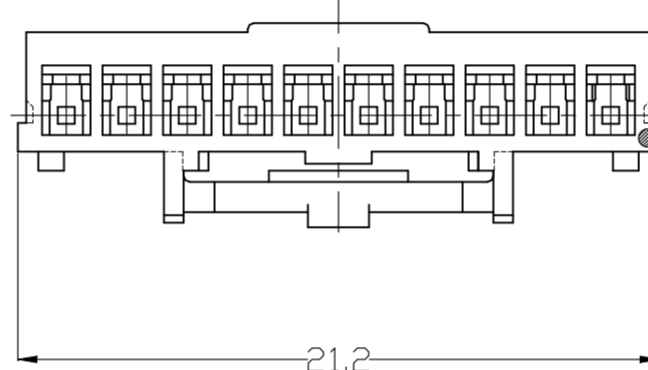
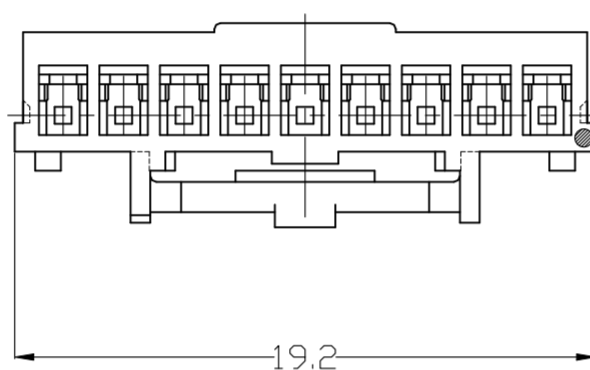
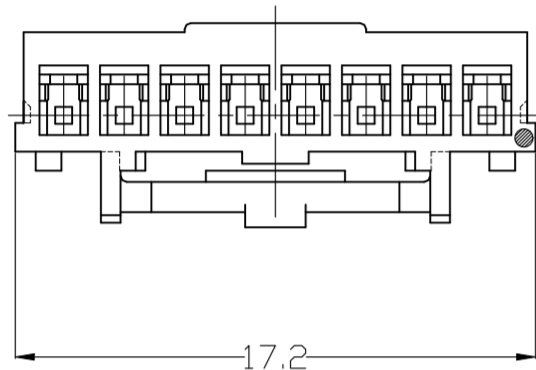
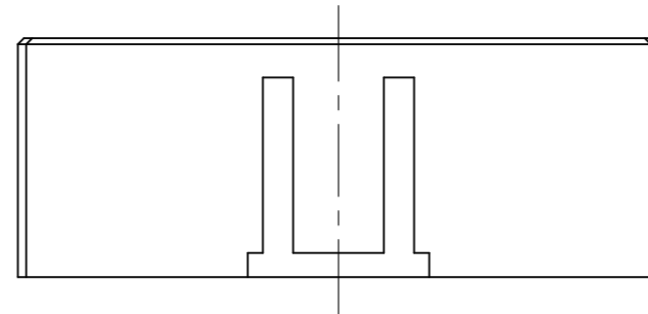
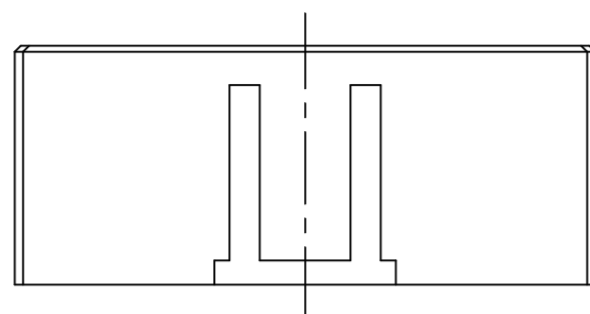
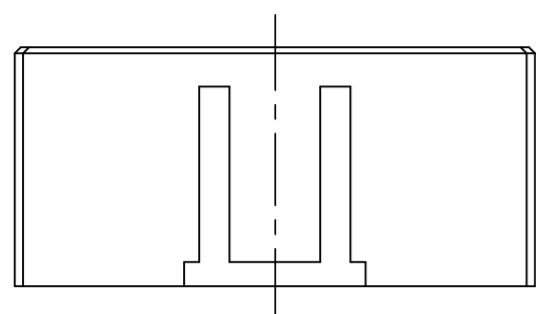
THIS DRAWING IS UNPUBLISHED. RELEASED FOR PUBLICATION
 © COPYRIGHT - TE Connectivity ALL RIGHTS RESERVED.

REVISIONS					
P	LTR	DESCRIPTION	DATE	DWN	APVD
-	-	SEE SHEET 1	-	-	-

(8 POS.)

(9 POS.)

(10 POS.)



3-2367943-1	3-1971032-1	D	YELLOW	10	3-1971030-1
2-2367943-1	2-1971032-1	C	BLUE		2-1971030-1
1-2367943-1	1-1971032-1	B	RED		1-1971030-1
2367943-1	1971032-1	A	NATURAL		1971030-1
3-2367943-9	3-1971032-9	D	YELLOW	9	3-1971030-9
2-2367943-9	2-1971032-9	C	BLUE		2-1971030-9
1-2367943-9	1-1971032-9	B	RED		1-1971030-9
2367943-9	1971032-9	A	NATURAL		1971030-9
3-2367943-8	3-1971032-8	D	YELLOW	8	3-1971030-8
2-2367943-8	2-1971032-8	C	BLUE		2-1971030-8
1-2367943-8	1-1971032-8	B	RED		1-1971030-8
2367943-8	1971032-8	A	NATURAL		1971030-8
3-2367943-7	3-1971032-7	D	YELLOW	7	3-1971030-7
2-2367943-7	2-1971032-7	C	BLUE		2-1971030-7
1-2367943-7	1-1971032-7	B	RED		1-1971030-7
2367943-7	1971032-7	A	NATURAL		1971030-7
3-2367943-6	3-1971032-6	D	YELLOW	6	3-1971030-6
2-2367943-6	2-1971032-6	C	BLUE		2-1971030-6
1-2367943-6	1-1971032-6	B	RED		1-1971030-6
2367943-6	1971032-6	A	NATURAL		1971030-6
7-2367943-5	/	H	GRAY	5	7-1971030-5
6-2367943-5	/	G	VIOLET		6-1971030-5
5-2367943-5	/	F	BROWN		5-1971030-5
4-2367943-5	4-1971032-5	E	BLACK		4-1971030-5
3-2367943-5	3-1971032-5	D	YELLOW		3-1971030-5
2-2367943-5	2-1971032-5	C	BLUE		2-1971030-5
1-2367943-5	1-1971032-5	B	RED		1-1971030-5
2367943-5	1971032-5	A	NATURAL	1971030-5	
3-2367943-4	3-1971032-4	D	YELLOW	4	3-1971030-4
2-2367943-4	2-1971032-4	C	BLUE		2-1971030-4
1-2367943-4	1-1971032-4	B	RED		1-1971030-4
2367943-4	1971032-4	A	NATURAL		1971030-4
3-2367943-3	3-1971032-3	D	YELLOW	3	3-1971030-3
2-2367943-3	2-1971032-3	C	BLUE		2-1971030-3
1-2367943-3	1-1971032-3	B	RED		1-1971030-3
2367943-3	1971032-3	A	NATURAL		1971030-3
4-2367943-2	4-1971032-2	E	BLACK	2	4-1971030-2
3-2367943-2	3-1971032-2	D	YELLOW		3-1971030-2
2-2367943-2	2-1971032-2	C	BLUE		2-1971030-2
1-2367943-2	1-1971032-2	B	RED		1-1971030-2
2367943-2	1971032-2	A	NATURAL	1971030-2	
MATING CONNECTOR PART NUMBER(SMT)	MATING CONNECTOR PART NUMBER(TH)	KEY TYPE	COLOR	POS.	PART NUMBER

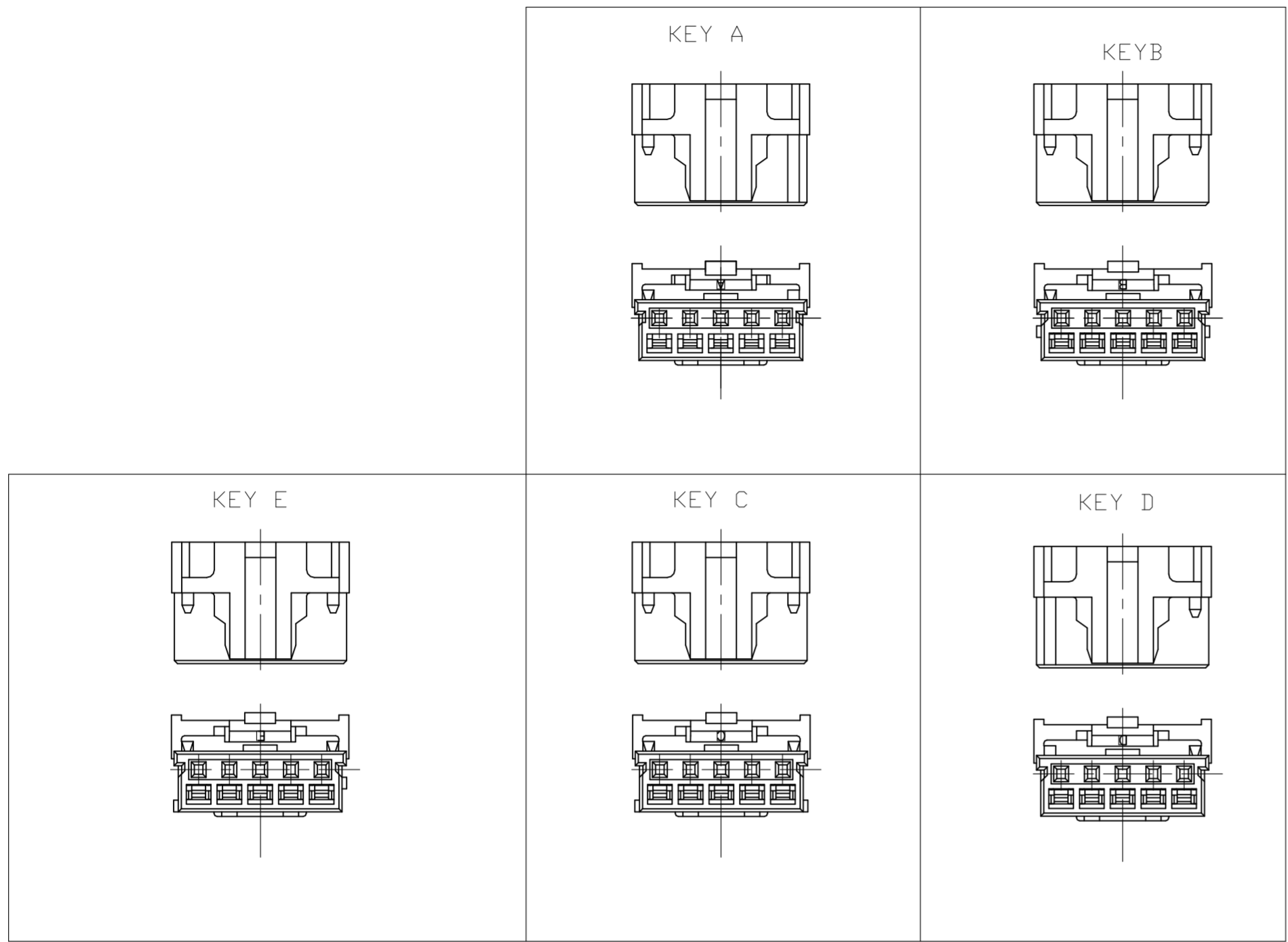
THIS DRAWING IS A CONTROLLED DOCUMENT.

DWN Liu Jimmy 11JUN2008		TE Connectivity Grace Inertia Connector 2.0 EV Series Plug Housing		
CHK Wu Sam 11JUN2008				
APVD Zhou Julian 11JUN2008				
PRODUCT SPEC 108-106001				
APPLICATION SPEC 114-5425	SIZE A2	CAGE CODE 00779	DRAWING NO. C=1971030	RESTRICTED TO -
MATERIAL SEE NOTE	WEIGHT -	SCALE N/A	SHEET 3 of 4	REV F
CUSTOMER DRAWING				

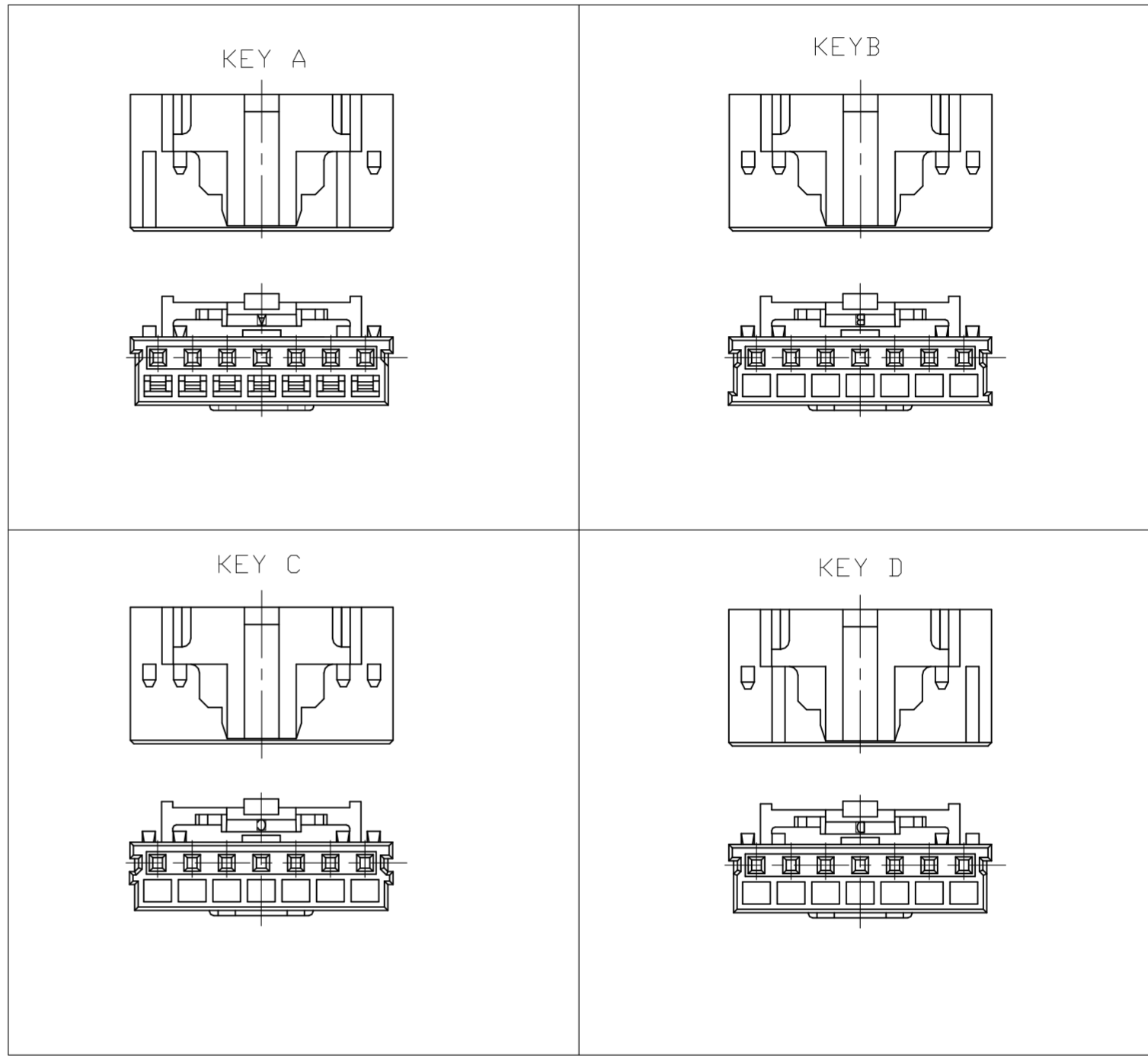
THIS DRAWING IS UNPUBLISHED. RELEASED FOR PUBLICATION
 © COPYRIGHT - TE Connectivity ALL RIGHTS RESERVED.

REVISIONS					
P	LTR	DESCRIPTION	DATE	DWN	APVD
-	-	SEE SHEET 1	-	-	-

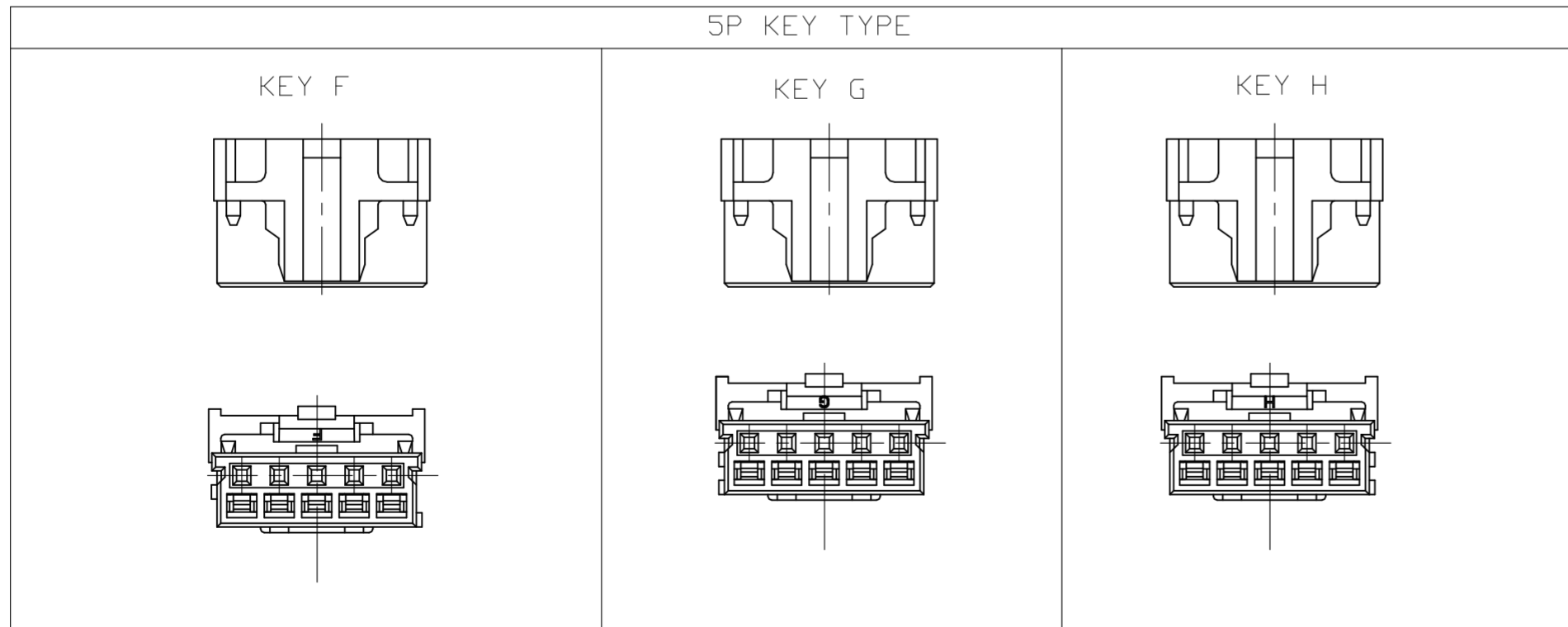
2P~6P KEY TYPE



7P~10P KEY TYPE



5P KEY TYPE



THIS DRAWING IS A CONTROLLED DOCUMENT.		DWN Liu Jimmy 11JUN2008	TE TE Connectivity	
DIMENSIONS: mm		CHK Wu Sam 11JUN2008		
TOLERANCES UNLESS OTHERWISE SPECIFIED:		APVD Zhou Julian 11JUN2008	NAME Grace Inertia Connector 2.0 EV Series Plug Housing	
0 PLC ±		PRODUCT SPEC 108-106001	SIZE A2	
1 PLC ± -		APPLICATION SPEC 114-5425	CAGE CODE 00779	DRAWING NO C=1971030
2 PLC ± -		WEIGHT -	RESTRICTED TO -	
3 PLC ± -		MATERIAL SEE NOTE	SCALE N/A	SHEET 4 of 4
4 PLC ± -		FINISH -	REV F	
ANGLES ± -		CUSTOMER DRAWING		