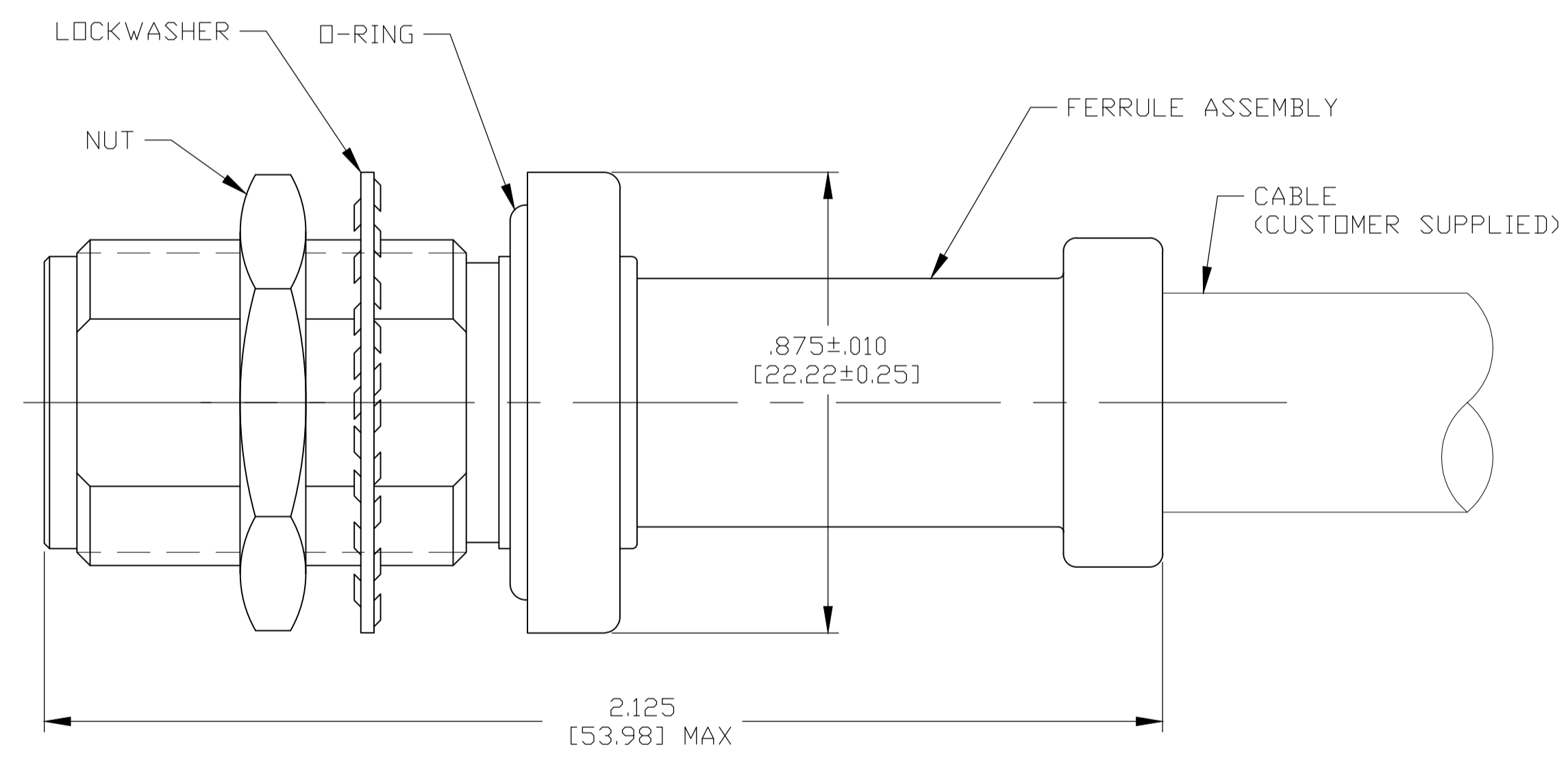
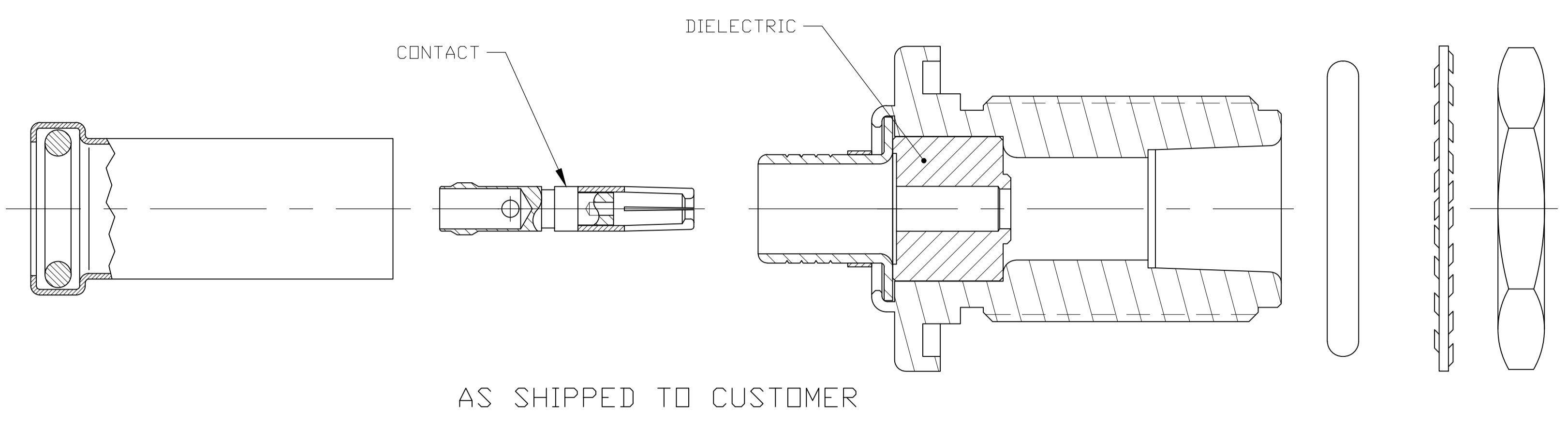
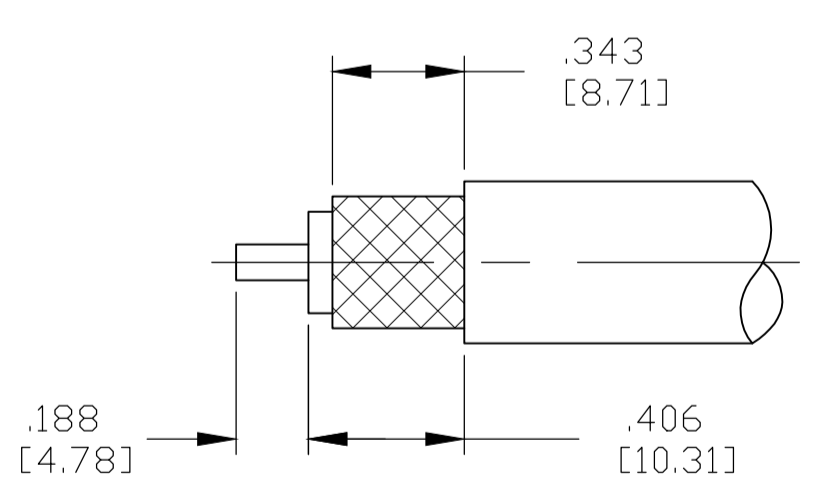


REVISIONS					
REV	BY	DESCRIPTION	DATE	APP'D	REV
C	REV PER ECO	18-016054	10-22-08	PR	

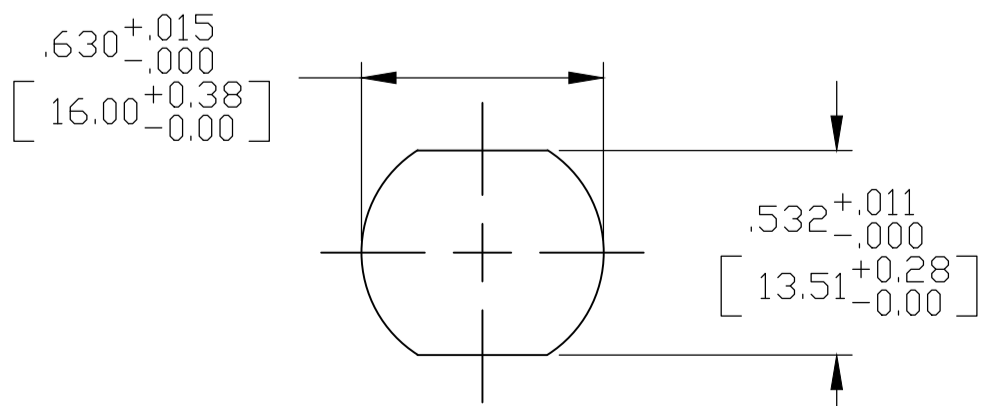
COMPONENT	MATERIAL	FINISH
FERRULE ASSY JACK SHELL NUT	BRASS PER ASTM-B-16	SILVER PER ASTM-B-700
DIELECTRIC	TEFLON PER ASTM-D-1710	--
CENTER CONTACT	BERYLLIUM COPPER PER ASTM-B-196	GOLD PLATED PER ASTM-B-488
LOCKWASHER	PHOS BRONZE PER ASTM-B-103	SILVER PER ASTM-B-700
O-RING	SILICONE PER ZZ-R-765	--



ASSEMBLED VIEW



RECOMMENDED STRIP LENGTH
SCALE 2:1



RECOMMENDED
PANEL CUTOUT
SCALE 2:1

RAYCHEM 5012H3012	90740-1	1996332-1
CABLE SIZE	CRIMP TOOL	PART NO.

THIS DRAWING IS A CONTROLLED DOCUMENT.		DWG NO. C.C.THOMAS 11-16-07	TE Connectivity
DIMENSIONS: INCHES		CHK: W.MOYER 11-16-07	
TOLERANCES UNLESS OTHERWISE SPECIFIED:		APP'D: W.MOYER 11-16-07	NAME: JACK, BULKHEAD, WEATHERPROOF, SERIES N
0. PLC	± .005	PRODUCT SPEC	
1. PLC	± .002		
2. PLC	± .001		
3. PLC	± .0005		
4. PLC	± .0002		
ANGLES	± .001	APPLICATION SPEC	
MATERIAL		I.S. 2028-3	RESTRICTED TO
FINISH		SIZE: A1	00779
		WEIGHT: 0	1996332
		CUSTOMER DRAWING	SCALE: 4:1 SHEET: 1 OF 1 REV: C