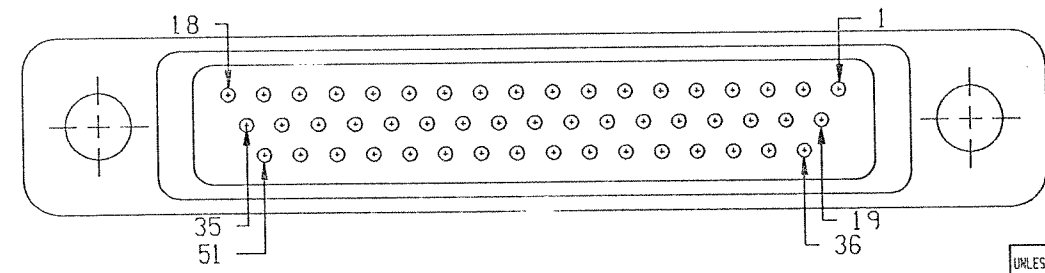
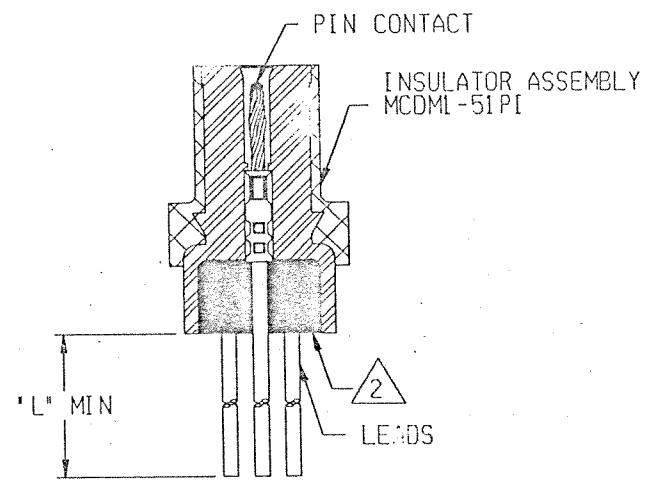
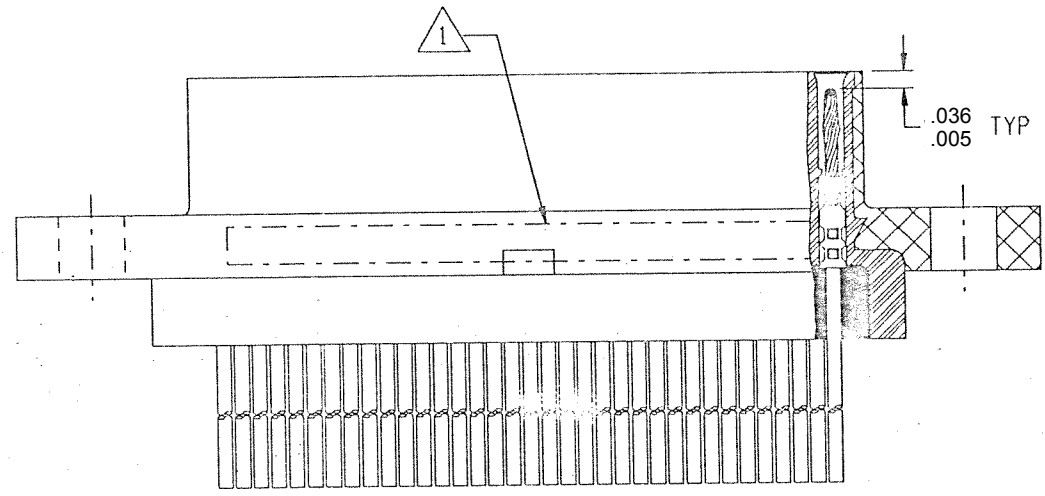
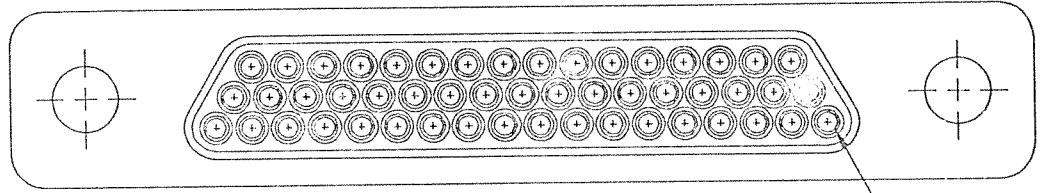



4 1 3 2 1 1

REVISION					
ZONE	LTR	ECN	DESCRIPTION	DATE	APPROVED
	c	39399	GENERAL DWG UPDATE	9/12/99	me
D			REV PER ECO 18-016639	1-8-19	AS



- NOTES: UNLESS OTHERWISE SPECIFIED
- ▲ MARK PER TIS.
  - ▲ POTTING COMPOUND USED IS 191-3102-6215/6225.
  - 3. CRIMP LEADS INTO CONTACTS PER MEP 302-05.
  - 4. EPOXY WICKING FROM THE REAR OF INSULATOR ON INSULATED LEADS MUST NOT EXCEED .125" MAX ON #25 AWG AND SMALLER LEADS AND .200" MAX ON #24 AWG AND LARGER LEADS.

UNLESS OTHERWISE SPECIFIED DIMENSIONS ARE IN INCHES. TOLERANCE ARE: FRACTIONS ± 1/8 DECIMALS .XX ± .01 .XXX ± .005 ANGLES ± 2°	APPROVALS		 <b>MICRODOT CONNECTORS</b> A DIVISION OF UNI-STAR INDUSTRIES INC. 386 PASADENA AVE., SO. PASADENA, CA 91038	PROD CODE 842  CODE M
	SIGNATURE	DATE		
MATERIAL:	DRAWN BY MEL F. CAMPOS	09/17/99	METAL SHELL 'D' CONNECTOR MCDML-B-51P	SIZE A
	FINISH:	THIS DOCUMENT IS THE PROPERTY OF MICRODOT CONNECTORS, A DIVISION OF UNI-STAR INDUSTRIES INC. USE OF THIS DOCUMENT OR ANY PART THEREOF IS STRICTLY FORBIDDEN WITHOUT THE EXPRESS WRITTEN PERMISSION OF MICRODOT CONNECTORS, A DIVISION OF UNI-STAR INDUSTRIES INC.		
			CODE IDENT NO. 98278	DRAWING NO. 2-1532133-0
			SCALE: NONE	SHEET 1 OF 1

CUSTOMER DRAWING