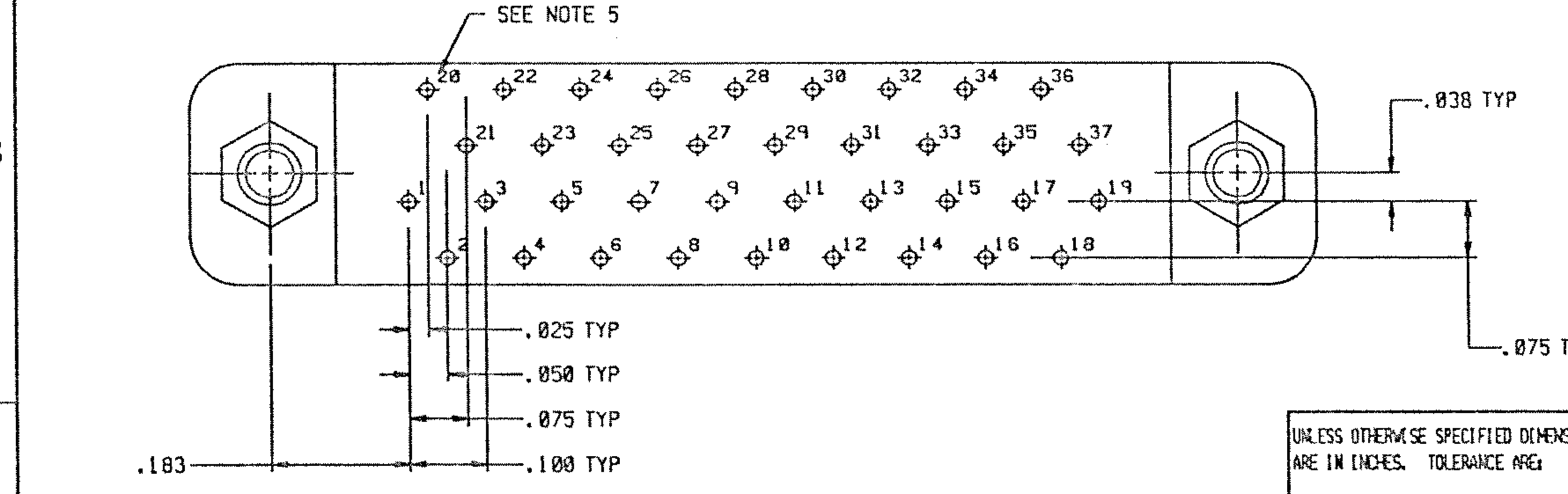
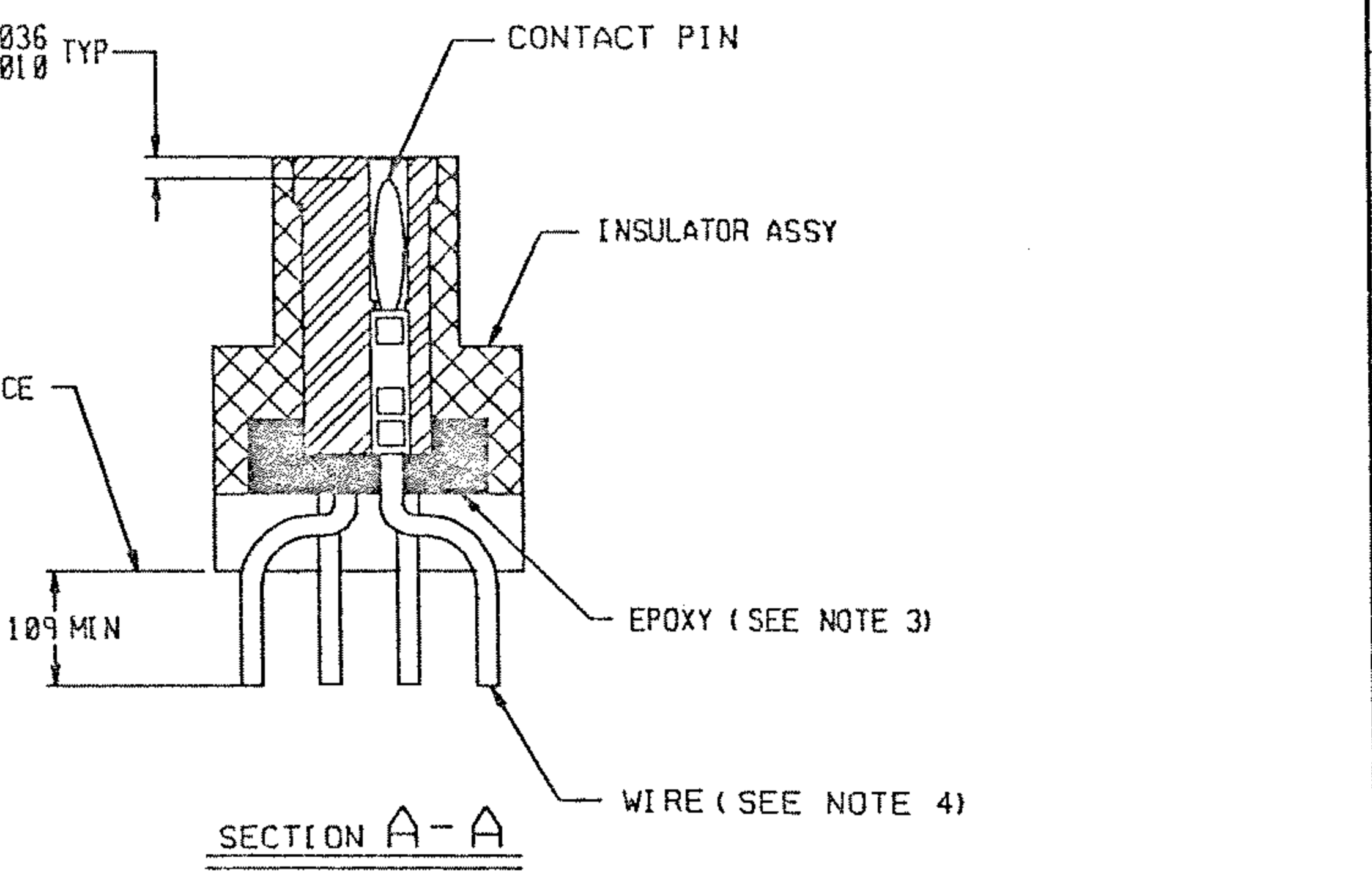
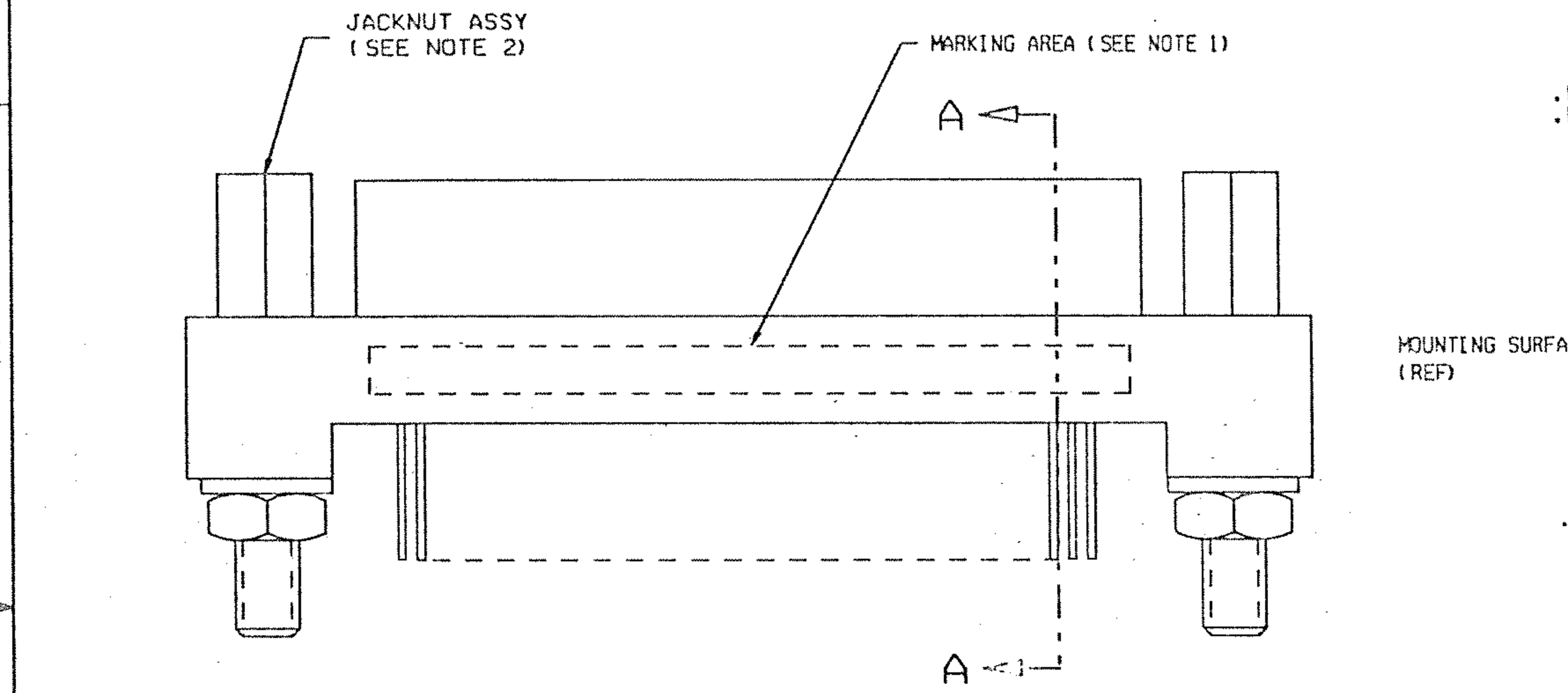


REVISION					
ZONE	LTR	ECN	DESCRIPTION	DATE	APPROVED
	B	41266	UPDATE DWG, SEE ECN.	2/5/10	JL
	C		UPDATE PER ECO-10-017486	8/25/10	PJS



- NOTES: UNLESS OTHERWISE SPECIFIED
- MARK PER TPD.
  - JACKNUT ASSEMBLIES AS SHOWN ARE ASSEMBLED ON FLANGE.
  - EPOXY AS SHOWN.
  - TERMINAL WIRES ARE TO BE SOLDER DIPPED UP TO MOUNTING SURFACE.
  - LEAD IDENTIFICATION AS SHOWN ARE REFERENCE ONLY. DO NOT APPEAR ON THE PART.
  - CRIMP LEADS INTO CONTACTS PER MEP302-05.

UNLESS OTHERWISE SPECIFIED DIMENSIONS ARE IN INCHES. TOLERANCE ARE: FRACTIONS ± 1/8 DECIMALS .XX ± .01 .XXX ± .005 ANGLES ± 2°	APPROVALS		<b>MALCO</b> A MICRODOT COMPANY, INC. 306 PASADENA AVE., SO. PASADENA, CA 91030	PROD CODE 845 CODE M
	SIGNATURE	DATE		
	CHECKED			
	PROD. ENG.			
MATERIAL:			METAL SHELL 'D' CONNECTOR, PLUG	
			MCK-**-P-37PST2	
			180 DEGREE WITHOUT T.B. BLOCK	
			094-5604-7003	
FINISH:	THIS DOCUMENT IS THE PROPERTY OF MALCO, A MICRODOT CO. USE OF THIS DOCUMENT OR ANY PART OF THEREOF IS STRICTLY FORBIDDEN WITHOUT THE EXPRESS WRITTEN PERMISSION OF MALCO, A MICRODOT COMPANY.		SIZE	CODE IDENT NO.
			A	98278
			DRAWING NO.	2-1532142-0
			SCALE: NONE	SHEET 1 OF 1