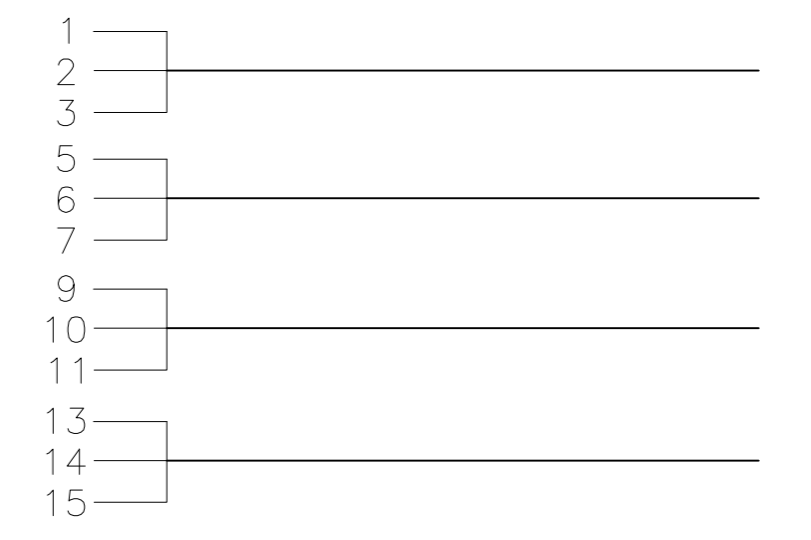
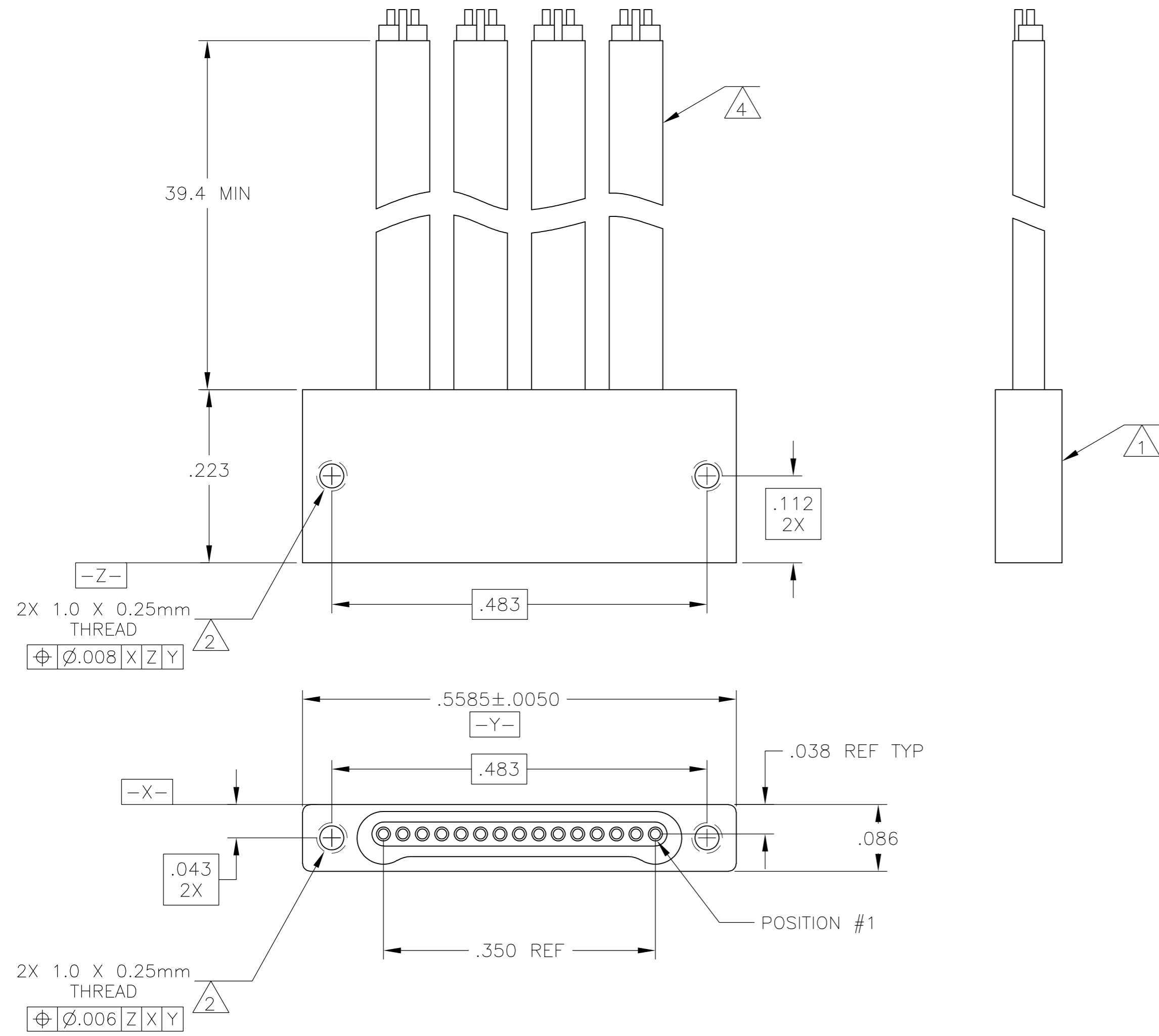


THIS DRAWING IS UNPUBLISHED. RELEASED FOR PUBLICATION
 © COPYRIGHT - By - ALL RIGHTS RESERVED.

LOC		DIST		REVISIONS			
P	LTR	DESCRIPTION		DATE	DWN	APVD	
-	-	A	RELEASED	11-19-13	CT	RL	



#3, 7, 9 & 13 ARE DRAIN WIRE
 #1, 2, 5, 6, 10, 11, 14 & 15
 ARE DIFFERENTIAL PAIR

- 1 SHELL:
6061-T6 ALUMINUM, ELECTROLESS NICKEL PLATED PER MIL-C-26074
INSULATOR MATERIAL: LIQUID CRYSTAL POLYMER (LCP) PER MIL-M-24519 OR PLASTIC PER ASTM D5138
- 2 1.00UNM X 0.25mm JACKSCREW AND MOUNTING THREADS
- 3. MOUNTING HARDWARE IS AVAILABLE WITH THIS CONFIGURATION (NOT SHOWN). HARDWARE MUST BE SPECIFIED IN THE NANONICS PART NUMBER. CONSULT TE CONNECTIVITY FOR DETAILS.
- 4 MADISON TWIN TURBO CABLE, 022B2LF007; TE P/N 4-1899778-7
- 5. THIS ASSEMBLY WAS CREATED TO SUPPORT 3.125 Gpbs TESTING.

THIS DRAWING IS A CONTROLLED DOCUMENT.		DWN C.C.THOMAS 11-19-13	TE TE Connectivity	
DIMENSIONS: INCHES		CHK R.LEASE 11-19-13		
TOLERANCES UNLESS OTHERWISE SPECIFIED:		APVD R.LEASE 11-19-13	NAME	
0 PLC ± -		PRODUCT SPEC	RECEPTACLE ASSEMBLY, FLYING LEADS, SINGLE ROW DUALLOBE, METAL	
1 PLC ± -		APPLICATION SPEC	SIZE A2	CAGE CODE 00779
2 PLC ± .01		WEIGHT -	DRAWING NO C-2-1925270-6	
3 PLC ± .005		RESTRICTED TO -	SCALE 8:1 SHEET 1 of 1 REV A	
4 PLC ± -		CUSTOMER DRAWING		
ANGLES ± -				
FINISH				
MATERIAL SEE NOTES				
SEE NOTES				