

THIS DRAWING IS UNPUBLISHED.
DIFFUSION RESTREINTE

RELEASED FOR PUBLICATION
LIBRE A LA DIFFUSION

20

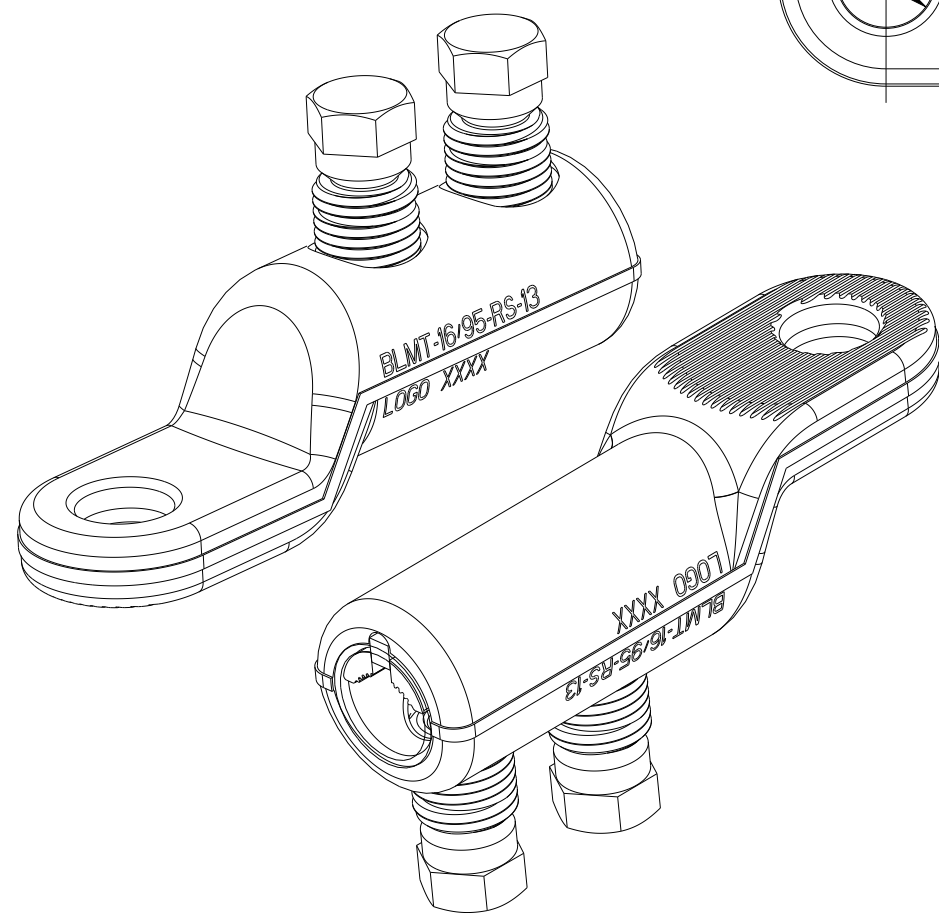
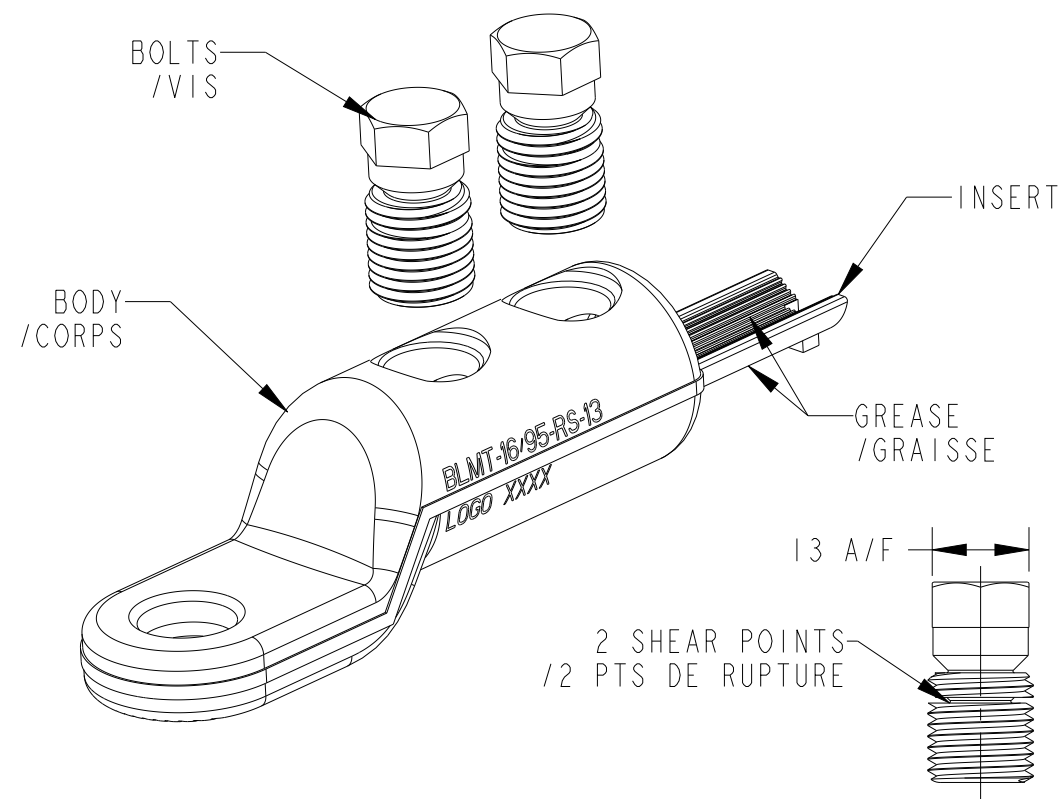
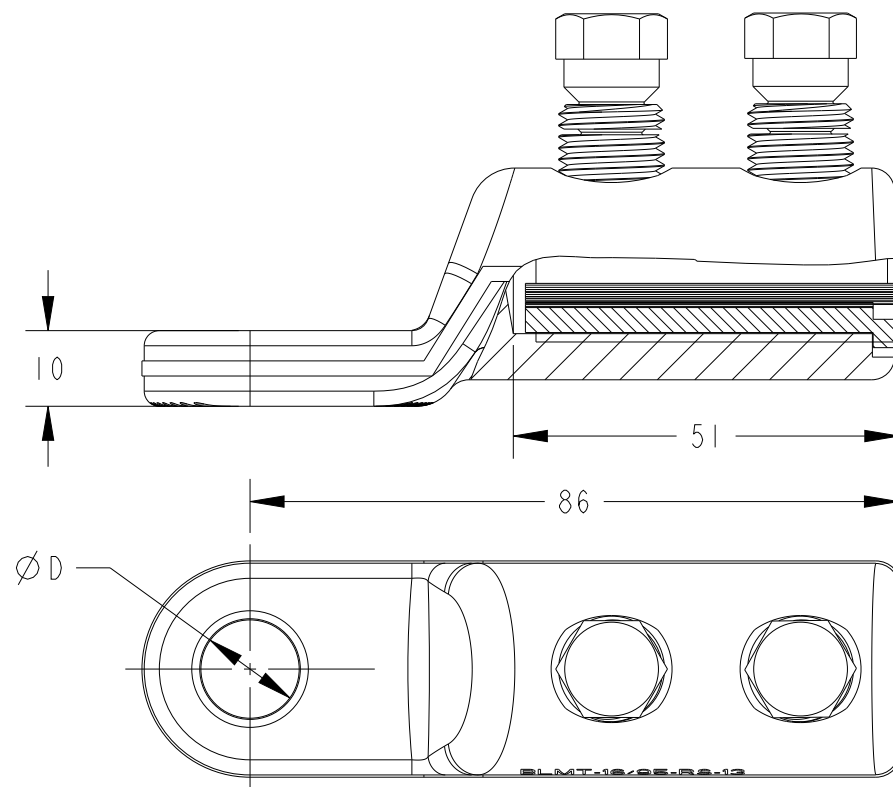
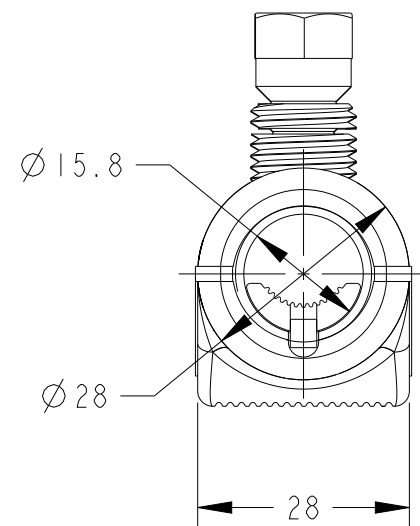
© COPYRIGHT 20 BY -

ALL RIGHTS RESERVED.
TOUS DROITS RESERVES

REVISIONS

P	LTR REV	DESCRIPTION MODIFICATIONS	DATE	DWN DESS.	APVD APP.
	A	CREATION	02MAR2007	RB	NA
	B	UPDATE NUMBER OF BOLTS	26NOV2007	BM	NA
	D	ECR-18-009281	15JUN2018	JB	NA
	E	REDUCE HEX HEAD DOWN TO 13	28JUN2024	BM	NA

DESCRIPTION	PART NUMBER	Ø D
BLMT-16/95-RS-17	2002443-2	17
BLMT-16/95-RS-13	2002443-1	13



	AL				CU	
	ROUND STRANDED /Rond câblé /RM	ROUND SOLID /Rond solide /RE	SECTOR STRANDED /Sectoral câblé /SM	SECTOR SOLID /Sectoral câblé /SE	ROUND STRANDED /Rond câblé /RM	SECTOR STRANDED /Sectoral câblé /SM
CONDUCTOR CROSS-SECTION /Section conducteur /Querschnittsbereich mm ²	25-95	-	25-95	-	16-95	16-95
CONDUCTOR DIAMETER /Diamètre conducteur /Leiterdurchmesser mm	Ø 5.6-Ø 12.9	-	-	-	Ø 4.6-Ø 12.9	-

TOLERANCES UNLESS OTHERWISE SPECIFIED
TOLERANCES NON SPECIFIEES: -

THIS DRAWING IS A CONTROLLED DOCUMENT.
CE PLAN EST UN DOCUMENT CONTROLE PAR TYCO ELECTRONICS CORPORATION.
IL EST SUSCEPTIBLE D'ETRE REVISE. POUR OBTENIR LA DERNIERE REVISION,
CONTACTER LE SERVICE TECHNIQUE DE TYCO ELECTRONICS SIMEL SAS,
21220 GEVREY-CHAMBERTIN, FRANCE.

DWN/DESSINE 02MAR2007

R. BUTHIOT

CHK/VERIFIE B. MILLOT

APVD/APPROUVE N. ALMEIDA

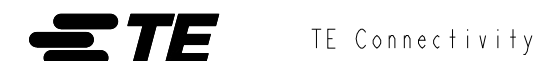
PRODUCT SPEC SPEC. PRODUIT

APPLICATION SPEC SPEC. APPLICATION

IEC 61238-1

WEIGHT MASSE APPROX. 121g

CUSTOMER DRAWING /PLAN CLIENT



NAME TITRE
BLMT-16/95-RS-13
BLMT-16/95-RS-17

SIZE FORMAT A3
CAGE CODE -
DRAWING NO No PLAN C-2002443

RESTRICTED TO RESERVE A

DIMENSIONS: mm	TOLERANCES UNLESS OTHERWISE SPECIFIED: TOLERANCES NON SPECIFIEES (SUIV NB DE DECIMALES): 0 PLC/DEC: ±0 1 PLC/DEC: ±0 2 PLC/DEC: ±0 3 PLC/DEC: ±0 4 PLC/DEC: ±0 ANGLES ±
MATERIAL MATIERE AL ALLOY	FINISH FINITION TINNED

UNIQUEMENT POUR REFERENCE
SCALE ECHELLE 1:1
SHEET FEUILLE OF DE 1
REV E