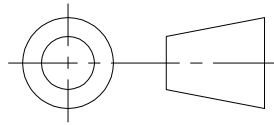
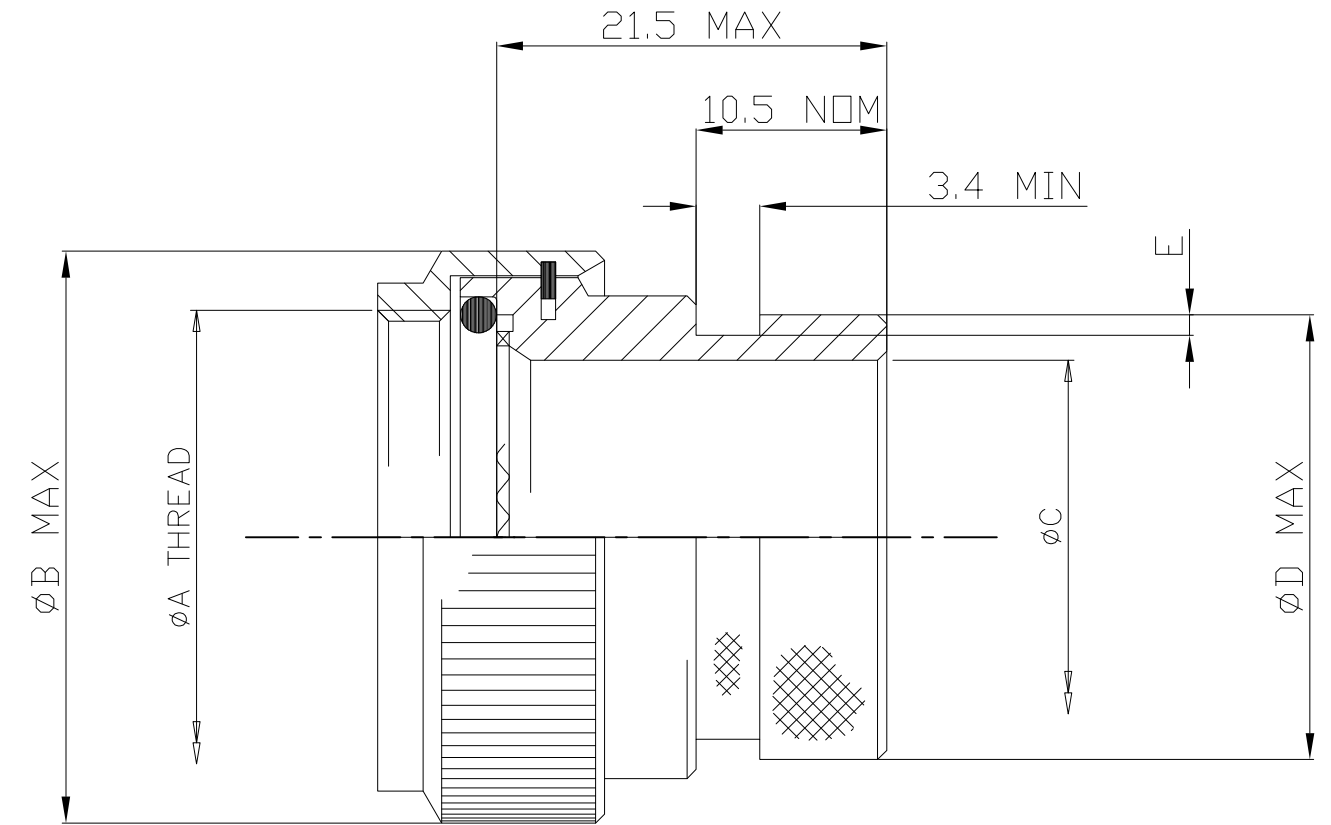


3rd ANGLE PROJECTION

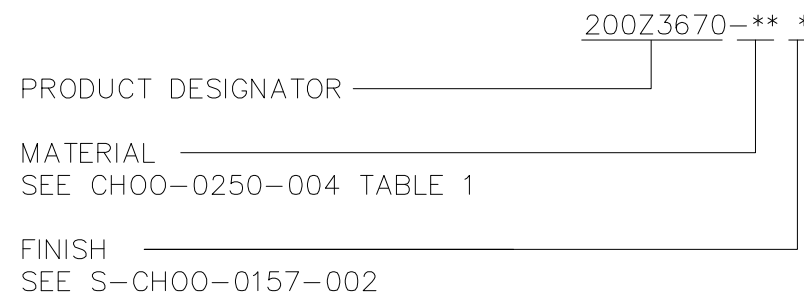


ISSUE	DESCRIPTION	DRAWN	DATE	APPR.
A	.	NN	07Apr14	HS

PART NUMBER	ORDER NUMBER	ØA THREAD RH CLASS 6H	ØB MAX	ØC	ØD MAX	E +0.15 -0.00
200Z3640-***	08	M12 x 1.0	19.05	6.80	13.5	1.15
200Z3650-***	10	M15 x 1.0	21.59	10.25	15.4	1.15
200Z3660-***	12	M18 x 1.0	25.40	13.00	19.7	1.15
200Z3670-***	14	M22 x 1.0	29.20	16.25	21.3	1.15
200Z3680-***	16	M25 x 1.0	31.75	19.50	24.5	1.15
200Z3690-***	18	M28 x 1.0	35.56	22.00	26.5	1.15
200Z3700-***	20	M31 x 1.0	38.10	25.00	31.0	1.75
200Z3710-***	22	M34 x 1.0	41.90	28.00	34.4	1.75
200Z3720-***	24	M37 x 1.0	44.45	31.00	36.6	1.75



PART NUMBERING SYSTEM



NOTES

- ADAPTOR TO BE PERMANENTLY MARKED WITH CODE IDENTIFICATION NUMBER AND PART NUMBER. (e.g. 06090 200Z3670-19-R)

SPECIFICATION CONTROL DRAWING				DO NOT SCALE THIS DRAWING	TE Connectivity FARADAY RD. DORCAN, SWINDON. SN3 5JB
DRAWN	N. NAGAR	DATE	07Apr14	THIS DRAWING AND THE INFORMATION SET FORTH HEREON ARE THE PROPERTY OF TE CONNECTIVITY AND ARE TO BE HELD IN TRUST AND CONFIDENCE. PUBLICATION, DUPLICATION, DISCLOSURE OR USE FOR ANY OTHER PURPOSE NOT EXPRESSLY AUTHORISED IN WRITING BY TE CONNECTIVITY IS PROHIBITED.	TITLE
CHECKED	H. SMITH	DATE	07Apr14		ADAPTOR ASSEMBLY
APPROVED	H. SMITH	DATE	07Apr14		PART NUMBER
PROJECT	10644				200Z3640 TO 3720
CODE IDENT. NO.	06090				ISSUE
					A
					3