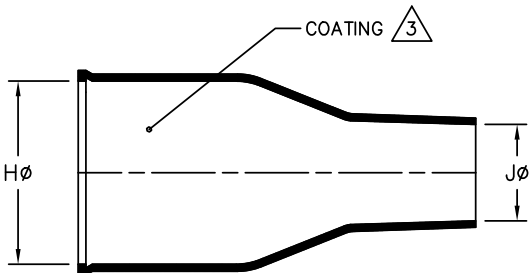
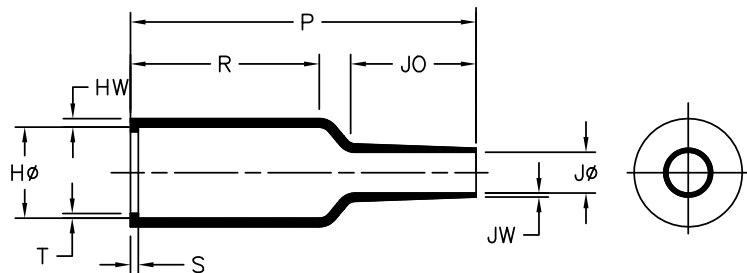


REVISIONS		
LTR	DESCRIPTION	DATE
A1	REVISED PER ECO-20-011498	07/27/2020



AS SUPPLIED



AFTER UNRESTRICTED RECOVERY

NOTES

- ALL DIMENSIONS ARE IN $\frac{\text{INCHES}}{[\text{MILLIMETERS}]}$
- DIMENSIONS APPEARING IN TABLE ARE AS FOLLOWS:
 a - AS SUPPLIED
 b - AFTER UNRESTRICTED RECOVERY

3. COATING (ADHESIVE): IS OPTIONAL. AS SUPPLIED DIMENSIONS APPEARING IN TABLE ARE FOR UNCOATED PARTS. WHEN COATING IS ADDED, ENTRY DIAMETER WILL BE REDUCED BY .06 [1.5] MAX.

- ORDERING INFORMATION
 202K111 -100 /XXX -0
 BASE PART NUMBER
 MATERIAL DASH NUMBER
 -100 POLYOLEFIN, SEMI-FLEXIBLE ZEROHAL (RW-2082)
 ADHESIVE SLASH NUMBER
 SEE COMPATIBILITY CHART BELOW
 COLOR DESIGNATOR

TABLE OF DIMENSIONS											
PART DESCRIPTION	H		J		P	R	S	T	JO	HW	JW
	MIN	MAX	MIN	MAX	±10%	±10%	±10%	±10%	±10%	±20%	±20%
	a	b	a	b	b	b	b	b	b	b	b
202K111	.71 [18,0]	.27 [6,9]	.31 [8,0]	.12 [3,0]	1.54 [39]	.94 [24]	.07 [1,7]	.04 [0,9]	.43 [10,8]	.05 [1,3]	.03 [0,7]

COMPATIBILITY CHART		
MATERIAL DASH NO.	ADHESIVE (COATING) SLASH NUMBER	ADHESIVE (COATING) S NUMBER
-100	/86; /180	S-1048; S-1030

UNLESS OTHERWISE SPECIFIED DIMENSIONS ARE INCHES. METRIC DIMENSIONS ARE IN BRACKETS.
 DECIMAL TOLERANCES
 .XXX ± 0.005 [0.13 mm]
 .XX ± 0.01 [0.25 mm]
 .X ± 0.1 [0.50 mm]
 ANGLE TOLERANCE
 ANGLE ± 1 DEG.

REVISED
 YNGUYEN
 APPROVED
 S.GRAVANO
 THIRD ANGLE PROJECTION

Raychem Molded Parts
CUSTOMER DRAWING

STE TE Connectivity

TITLE
 BOOT, STRAIGHT WITH LIP

SIZE B CODE IDENT. NO. 06090 DWG. NO. 202K111-100