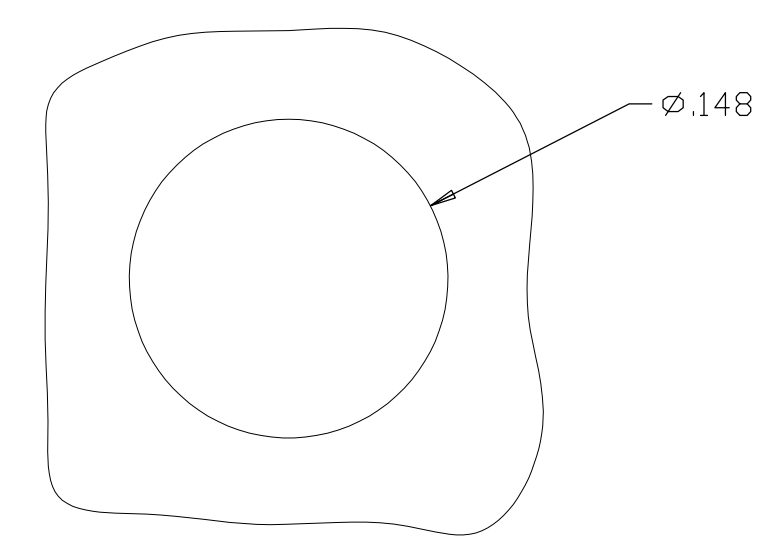
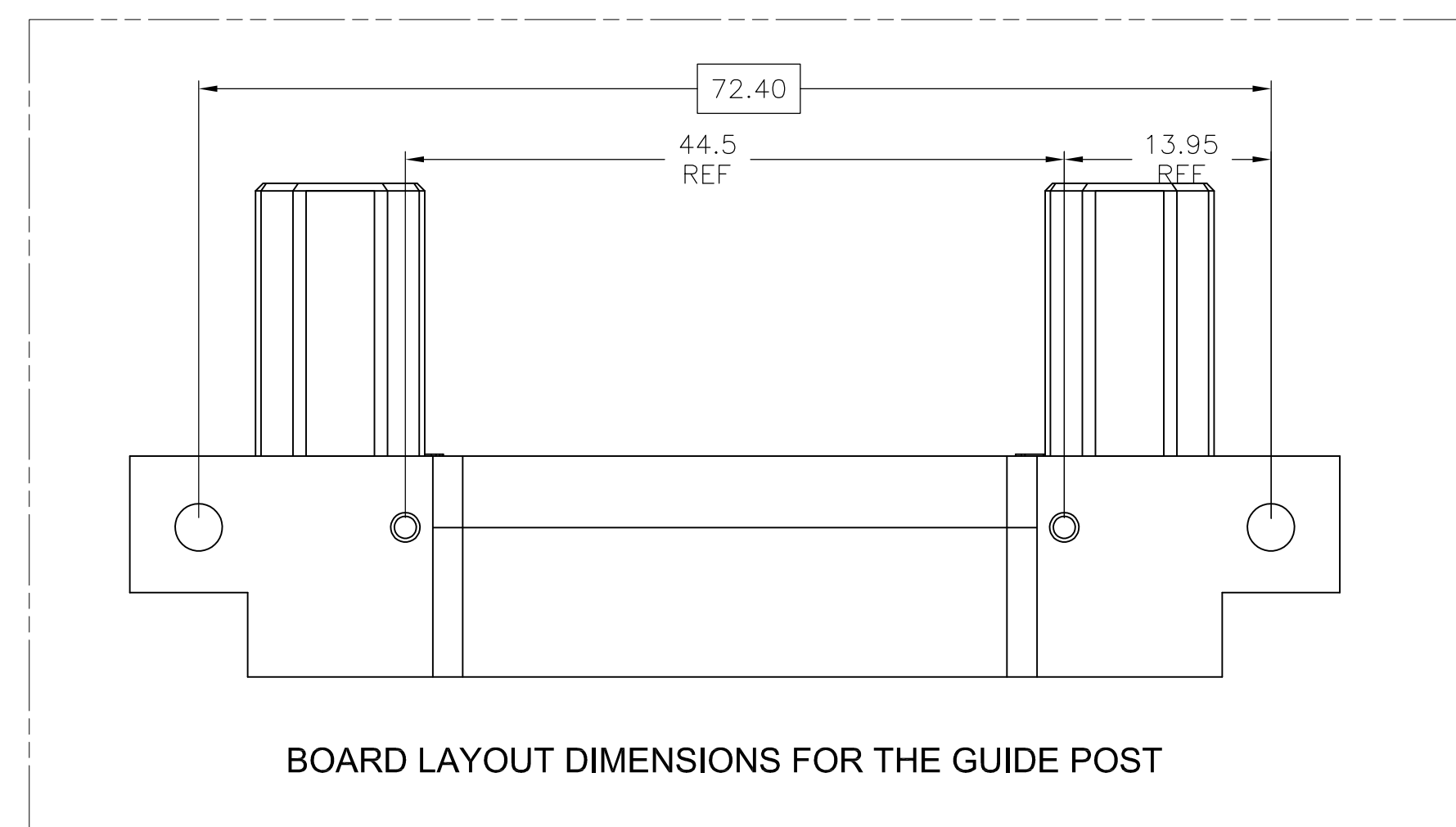
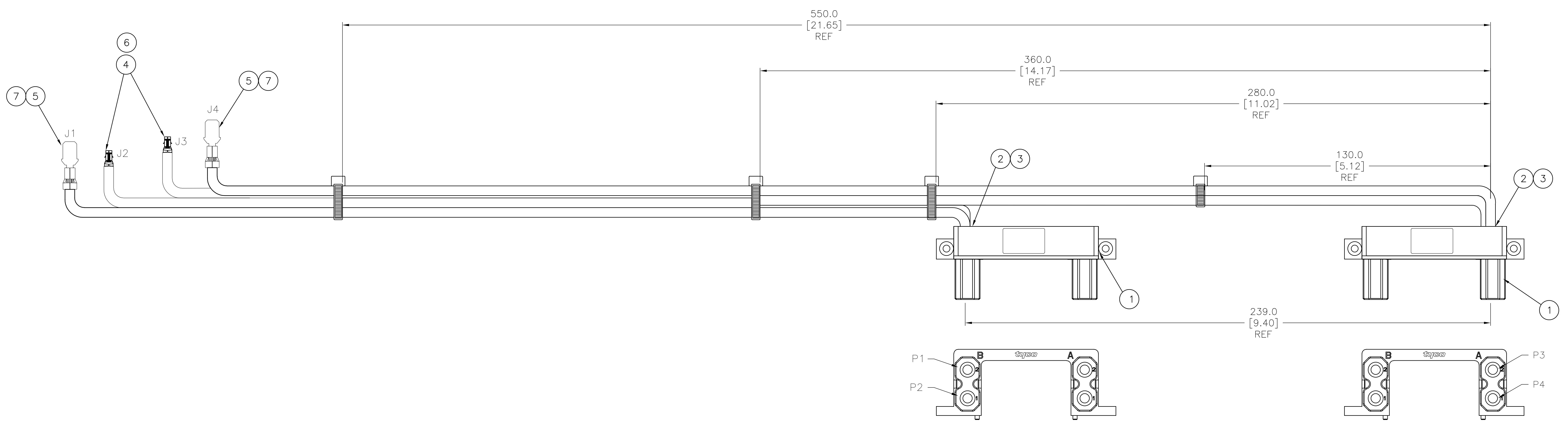


DETAIL A
 PLATED SLOT FOR
 FASTON TAB
 SCALE 5:1



DETAIL B
 PLATED HOLE FOR
 AMP-IN TERMINAL
 SCALE 15:1

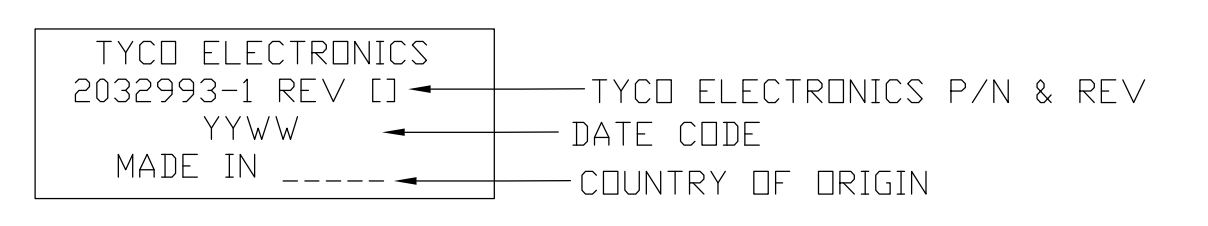
RECOMMENDED
 PCB THROUGH HOLE LAYOUT



BOARD LAYOUT DIMENSIONS FOR THE GUIDE POST

FROM	COLOR	WIRE CUT LENGTH	TO	DESIGNATION
P1	BLK	405.0 [15.94]	J1	GND1
P2	RED	405.0 [15.94]	J2	PWR1
P3	BLK	600.0 [23.62]	J4	GND2
P4	RED	600.0 [23.62]	J3	PWR2

1. PRODUCT AND PROCESSING MUST MEET REQUIREMENTS OF TYCO ELECTRONICS STANDARD 230-702.
2. THIS DRAWING IS RESTRICTED TO HEWLETT PACKARD.
3. LABEL INFORMATION;



4. EACH ASSEMBLY TO BE INDIVIDUALLY BAGGED AND SEALED.
5. ASSEMBLY TO BE 100% TESTED FOR OPENS, SHORTS AND CONTINUITY.

-	-	2032993-1
CUSTOMER REV	CUSTOMER P/N	TYCO ELECTRONICS P/N

QTY	PC	DESCRIPTION	ITEM
2	PC	LABEL, WP-191114-15-9	9
4	PC	CABLE TIE, 4 INCH, BLK	8
2	PC	FASTON TAB, 250 SERIES	7
2	PC	MINI AMP-IN, 10 AWG	6
3.30	FT	WIRE, 10 AWG, SUPERFLEX, BLACK	5
3.30	FT	WIRE, 10 AWG, SUPERFLEX, RED	4
4	PC	SUB ASSY, #8 CROWN BAND, #10 CRIMP	3
2	PC	INSERT, HOUSING, PLUG BRIDGE	2
2	PC	HOUSING, PLUG, BRIDGE, 4 POSN	1
-1	U/M	DESCRIPTION	ITEM

THIS DRAWING IS A CONTROLLED DOCUMENT.

DIMENSIONS: mm [INCHES]	TOLERANCES UNLESS OTHERWISE SPECIFIED:	DWN: E.C. CLAYBAUGH 12/FEB/08	CHK: J. McLaughlin 20/FEB/08	APVD: J. SCHOLZ 25/FEB/08	NAME: J. SCHOLZ	TYCO ELECTRONICS Corporation Harrisburg, PA 17105-3608
0 PLC ± -	1 PLC ± -	2 PLC ± -	3 PLC ± -	4 PLC ± -	ANGLES ± -	FINISH -
MATERIAL -	FINISH -	SIZE: A1	CAGE CODE: 00779	DRAWING NO: 2032993	RESTRICTED TO: -	CUSTOMER DRAWING