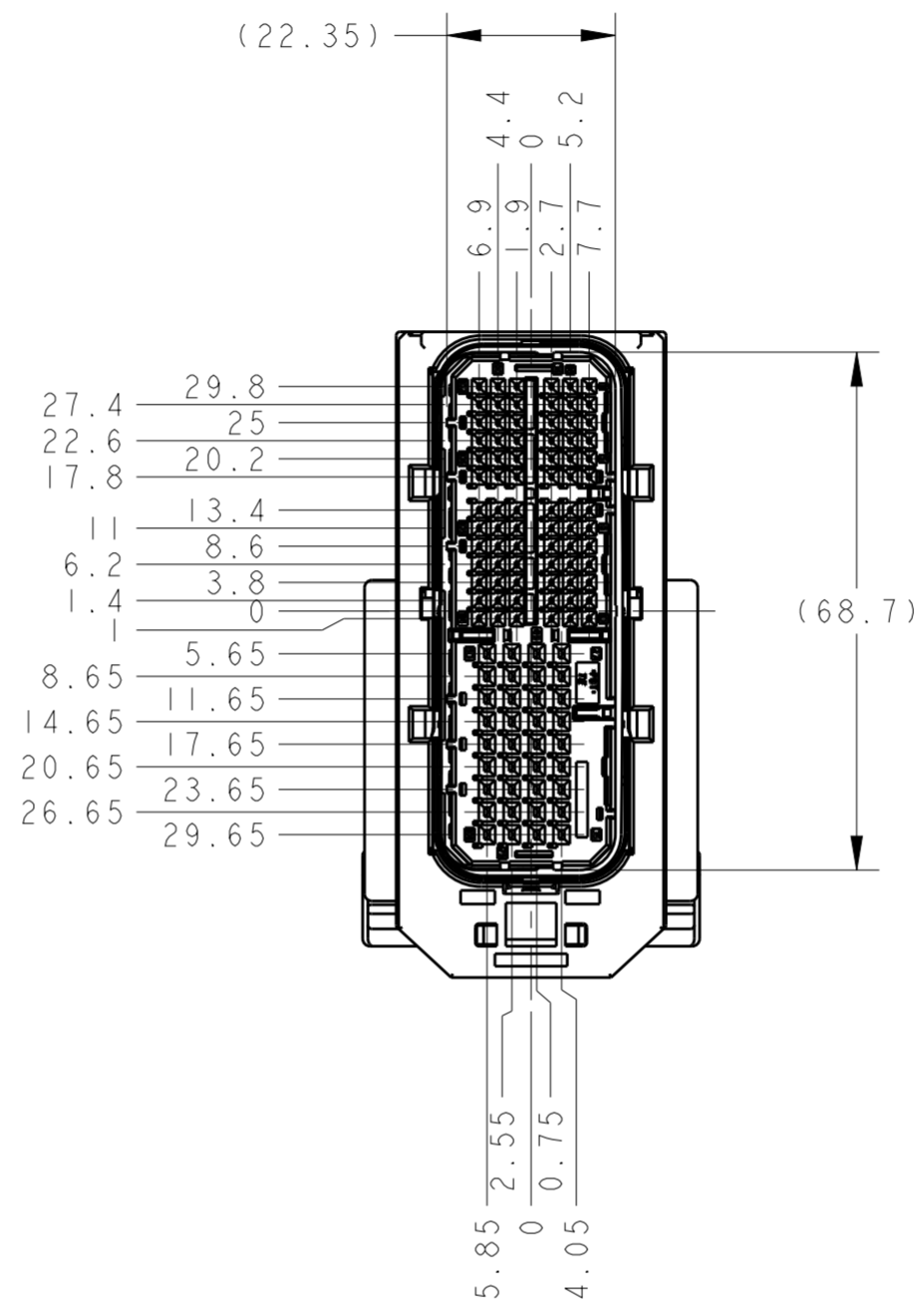
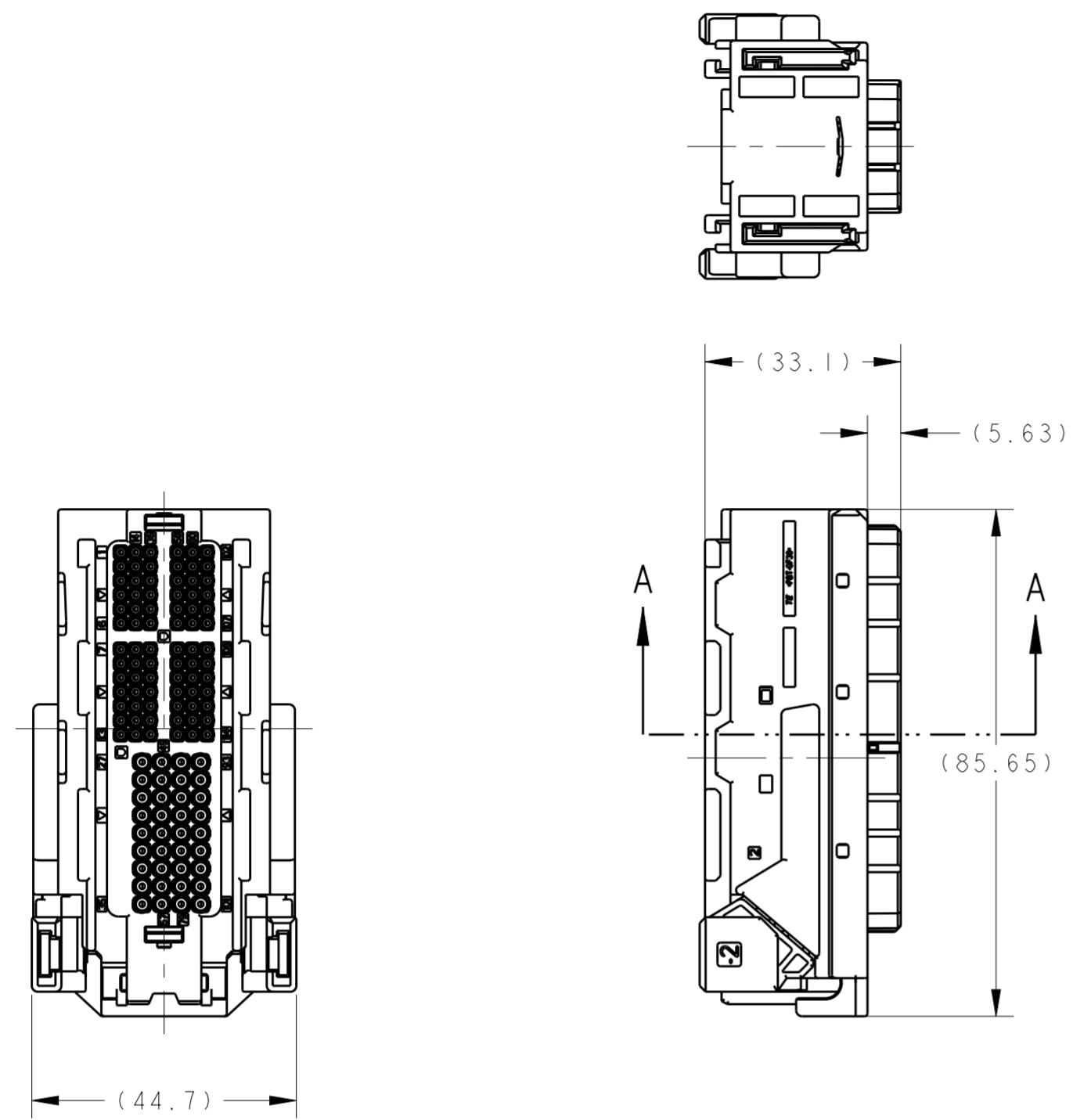


THIS DRAWING IS UNPUBLISHED. RELEASED FOR PUBLICATION 20
 © COPYRIGHT 2011 BY Tyco Electronics Japan G.K. ALL RIGHTS RESERVED.

REVISIONS 変更				
P	LTR	DESCRIPTION	DATE	DWN APVD
	A	RELEASED	15DEC15	K.S T.K



- PART NUMBER OF CAP HOUSING TO BE MATED: SEE TABLE-1
 - APPLIED TERMINAL: SEE TABLE-2
 - HANDLING OF THIS PART SHOULD FOLLOW INSTRUCTION SHEET NO.408-78102
 - THIS PRODUCT IS SHIPPED WITH RETAINER PRE-LOCKED POSITION
 - LEVER AND WIRE COVER ARE ASSEMBLED BY CUSTOMER
 LEVER: 2040113
 WIRE COVER: 2040114
1. 嵌合相手TE品番: TABLE-1参照
 2. 適用端子: TABLE-2参照
 3. 本製品の取扱は取扱説明書NO.408-78102に従うこと
- リテーナは仮保止状態で出荷される
 - レバー、ワイヤカバーは顧客にて組み立てられる
 TE品番
 レバー: 2040113
 ワイヤカバー: 2040114

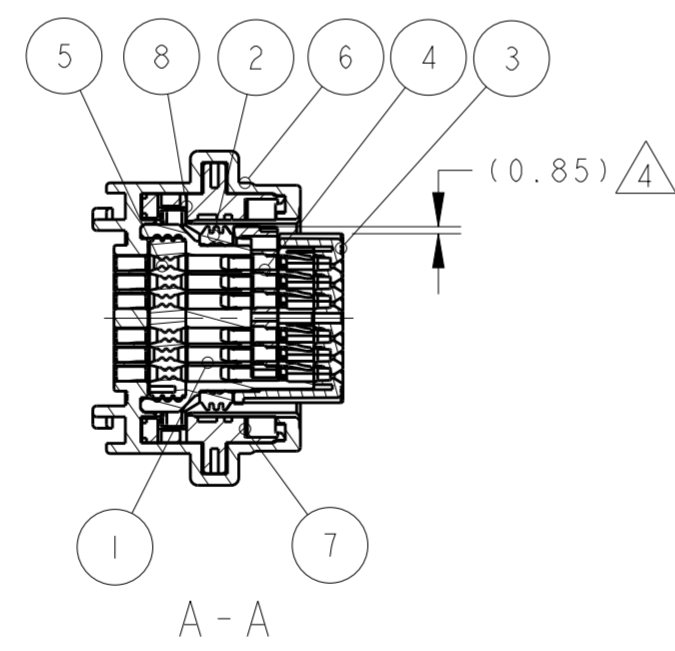


TABLE-1

POS 極数	CAP ASSEMBLY PART NO. キャップ型番
186	2261071

TABLE-2

CAVITY PLUG	FINISH	TERMINAL NO.	APPLICABLE WIRE RANGE
1.0	LIGHT GRAY	1981562-1	-
0.5	NATURAL	1981561-2	-
1.0	TIN	1554723-1	0.5mm ² -0.85mm ²
		1939351-1	0.75mm ² -1.25mm ²
0.50	TIN	1939349-1	0.3mm ² -0.5mm ²
SIZE	FINISH	TERMINAL NO. 端子型番	APPLICABLE WIRE RANGE 適用電線

TABLE-3

PAPER BOX ダンボール箱	OUTER 外装	PACKING STYLE 梱包形態		
SOFT TRAY プラスチックトレイ	INNER 内装			
I	BLACK	PBT	SLIDER (B) 114POS	8
I	BLACK	PBT	SLIDER (A) 114POS	7
I	BLACK	PBT	OUTER HOUSING 114POS	6
I	BROWN	SILICONE	WIRE SEAL 114POS	5
I	NATURAL	PBT	RETAINER 114POS	4
I	BLACK	PBT	FRONT CAVITY 114POS	3
I	BROWN	SILICONE	SEAL RING 114POS	2
I	BLACK	PBT	PLUG HOUSING 114POS	1
2040105-1	FINISH /COLOR	MATERIAL	NAME	ITEM NO.

THIS DRAWING IS A CONTROLLED DOCUMENT.

DIMENSIONS: 単位: 桁 mm	TOLERANCES UNLESS OTHERWISE SPECIFIED: 一般公差 ±0.3 0-PLC ±0.5 1-PLC ±0.5 2-PLC ±0.13 3-PLC ±0.13 4-PLC ±0.001 ANGLES ±3°00'	DWN K. SHIGA 15DEC15	TE Connectivity PLUG ASSEMBLY 114POSITION, 0.50/1.0/2.8 SEALED TYPE 186POS ブラック アッセンブリ 114極, 0.50/1.0/2.8 防水タイプ 186極		
	MATERIAL 材料 SEE TABLE-3	CHK E. SASAKI 15DEC15			
		APVD T. KOHNO 15DEC15			
PRODUCT SPEC 製品規格 108-140084	APPLICATION SPEC 取付適用規格 114-5400,-5470	SIZE A2		CAGE CODE 00779	DRAWING NO. C-2040105

WEIGHT 73.41 g
CUSTOMER DRAWING
SCALE 1:1 SHEET OF REV A