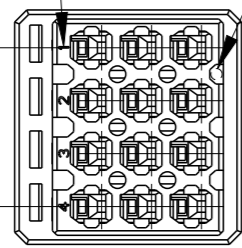


| P | LTR | DESCRIPTION | DATE | DWN | APVD |
|---|-----|-------------|-----------|-----|------|
| | A | RELEASED | 07NOV2008 | MM | AO |
| | B | REVISED | 29JAN2020 | RI | EI |

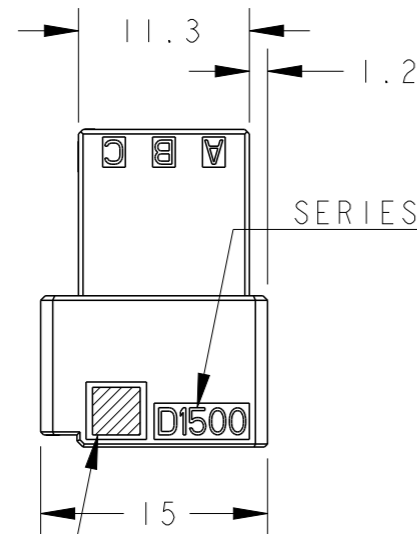
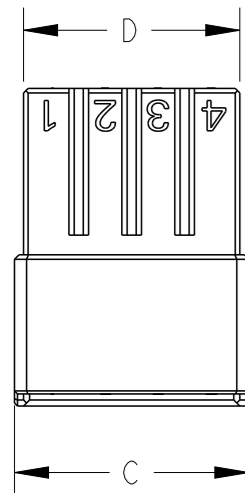
CIRCUIT NO CAVITY MARK

$3.5 \times n = A$



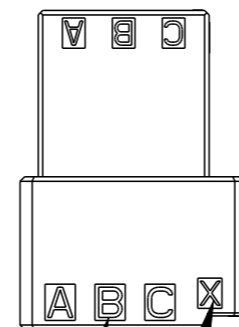
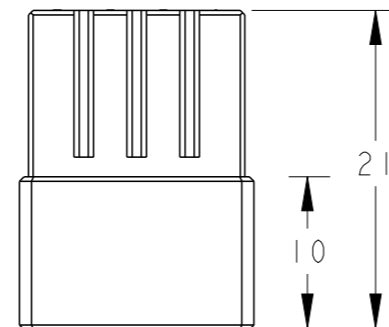
1. MATERIAL: GLASS FILED THERMO PLASTIC POLYESTER(94V-0), COLOR: BLACK
2. THE SHAPE, SIZE AND POSITION OF THE CHARACTER SHOW THE OUTLINE. THEY DON'T SHOW DETAILS.

1. 材料: ガラス入り熱可塑性ポリエステル樹脂(94V-0), 色: 黒
2. 文字の形状、大きさ、および位置については、大略を示すものであり、詳細を示すものではありません。



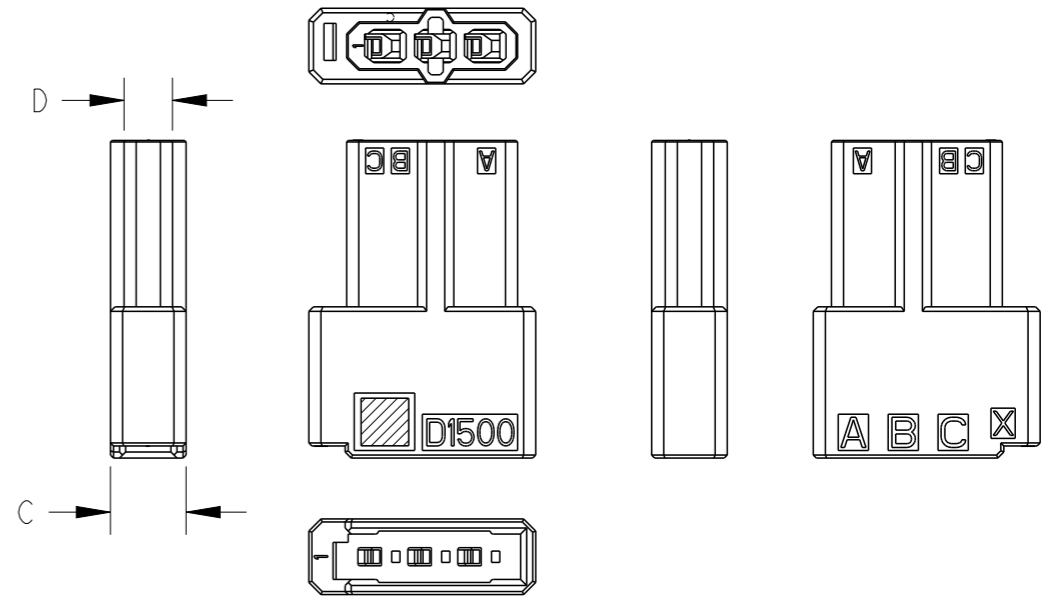
SERIES CODE

COMPANY LOGO

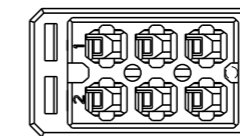


ROW ID

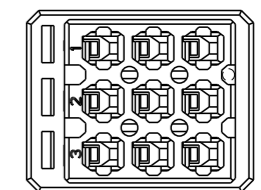
KEYING MARK



3POS(X-KEY): 1-2040444-1



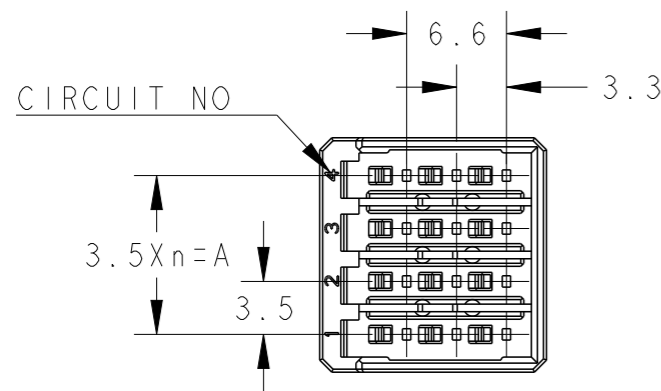
6POS(X-KEY): 1-2040444-2



9POS(X-KEY): 1-2040444-3

| POS | KEY | n | A | C | D | PART NO |
|-----|-----|---|------|------|------|-------------|
| 12 | X | 3 | 10.5 | 15.5 | 14.3 | 1-2040444-4 |
| 9 | X | 2 | 7.0 | 12.0 | 10.8 | 1-2040444-3 |
| 6 | X | 1 | 3.5 | 8.5 | 7.3 | 1-2040444-2 |
| 3 | X | - | - | 5.0 | 3.2 | 1-2040444-1 |

AS SHOWN 12POS(X-KEY) : 1-2040444-4



| | | | |
|---|--|--|--|
| THIS DRAWING IS A CONTROLLED DOCUMENT. | | DWN M. MAEBASHI 07NOV2008 | TE Connectivity |
| DIMENSIONS: 単位: 耗 mm | | CHK T. SAKAMOTO 07NOV2008 | |
| TOLERANCES UNLESS OTHERWISE SPECIFIED: 一般公差 ±0.3, ±5° | | APVD A. OISHI 07NOV2008 | |
| 0-PLC ± 1-PLC ±0.1 2-PLC ±0.02 3-PLC ±0.005 4-PLC ±0.0005 ANGLES ± | | NAME DYNAMIC D1500T 3.5mm PITCH TAB HSG (FREE HANGING TYPE) 6-12POS | |
| MATERIAL 材料 | | FINISH 仕上 | PRODUCT SPEC 製品規格 108-78268, 78298 |
| | | APPLICATION SPEC 取付適用規格 114-5377 | WEIGHT - |
| | | CUSTOMER DRAWING | SCALE 尺度 2:1 |
| | | | SHEET 1 OF 1 |
| | | | REV B |

| | | | |
|------------|--------------------|-------------------------|---------------|
| SIZE A3 | CAGE CODE 00779 | DRAWING NO C-2040444 | RESTRICTED TO |
|------------|--------------------|-------------------------|---------------|