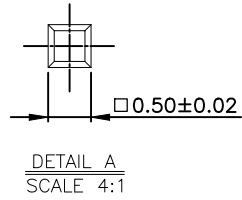
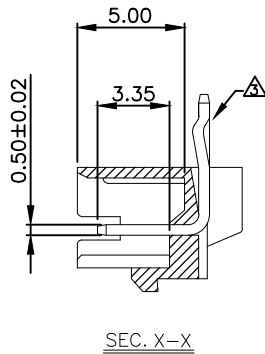
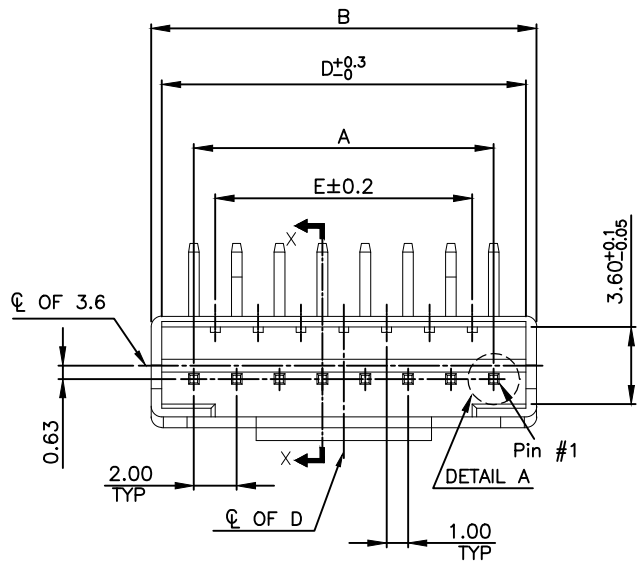


THIS DRAWING IS UNPUBLISHED. RELEASED FOR PUBLICATION
 © COPYRIGHT - BY - ALL RIGHTS RESERVED.

LOC		DIST		REVISIONS			
P	LTR	DESCRIPTION		DATE	DWN	APVD	
	A3	ECR-20-004159		07MAY2020	T.Q	W.H	

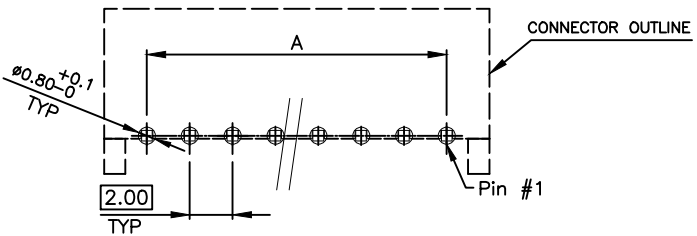
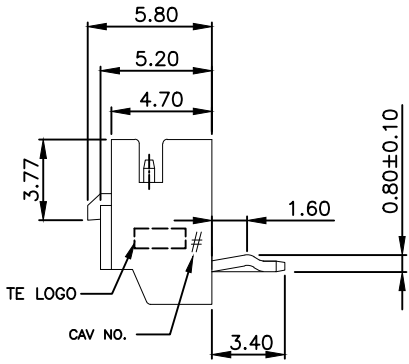
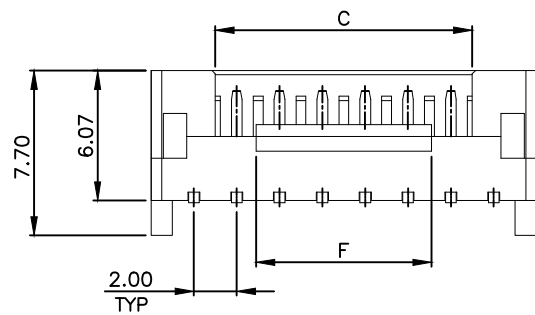
NOTE:

- MATERIAL:
HSG: NYLON 66, UL 94V-0. COLOR:NATURAL
CONTACTS: BRONZE.
- FINISH:
CONTACTS: 2.032 μ m [80 μ "] MIN. BRIGHT-TIN ON OVER ALL
0.762 μ m [30 μ "] MIN. NICKEL UNDERPLATED
- CONTACT SOLDER TAIL KINK DIRECTION (BOARD LOCK) SEE TABLE
- NON ACCUMULATIVE TOLERANCE
- WAVE SOLDER SPECIFICATION REFER TO 108-57788.



POS	1	2	3	4	5	6	7	8	9	10	11	12	13	14	15	16
2P	●	●														
3P	●	○	●													
4P	○	○	○	○												
5P	●	○	○	○	○	○										
6P	○	○	○	○	○	○	○									
7P	○	○	○	○	○	○	○	○								
8P	○	○	○	○	○	○	○	○	○							
9P	○	○	○	○	○	○	○	○	○	○						
10P	○	○	○	○	○	○	○	○	○	○	○					
11P	○	○	○	○	○	○	○	○	○	○	○	○				
12P	○	○	○	○	○	○	○	○	○	○	○	○	○			
13P	○	○	○	○	○	○	○	○	○	○	○	○	○	○		
14P	○	○	○	○	○	○	○	○	○	○	○	○	○	○	○	
15P	○	○	○	○	○	○	○	○	○	○	○	○	○	○	○	○
16P	○	○	○	○	○	○	○	○	○	○	○	○	○	○	○	○

● WITH LOCK KINK
○ WITHOUT LOCK KINK



RECOMMENDER PCB LAYOUT
 TOLERANCE: ±0.05 (TOP VIEW)
 (PCB THK=1.0~1.6mm)

THIS DRAWING IS A CONTROLLED DOCUMENT.

DIMENSIONS:	TOLERANCES UNLESS OTHERWISE SPECIFIED:
MM	

0 PLC	± -
1 PLC	± 0.3
2 PLC	± 0.2
3 PLC	± 0.15
4 PLC	± -
ANGLES	± 3'

MATERIAL SEE NOTE

FINISH SEE NOTE

DWN	J. LAI	300CT2009
CHK	S. CHIEN	300CT2009
APVD	W. KODAMA	300CT2009
PRODUCT SPEC	108-57788	
APPLICATION SPEC		
WEIGHT	SEE TABLE	
CUSTOMER DRAWING		

TE Connectivity		NAME	
		HPI 2.0mm HEADER CONNECTOR, R/A, DIP TYPE	
SIZE	CAGE CODE	DRAWING NO	RESTRICTED TO
A3	00779	C-2041145	-
SCALE		SHEET	REV
-		1 of 2	A3

OBSOLETE	-0.835	8.2	28.0	33.0	28.0±0.2	34.0	30.0	16P	1-2041145-6
OBSOLETE	-0.785	8.2	26.0	31.0	26.0±0.2	32.0	28.0	15P	1-2041145-5
	0.735	8.2	24.0	29.0	24.0±0.2	30.0	26.0	14P	1-2041145-4
OBSOLETE	-0.685	8.2	22.0	27.0	22.0±0.2	28.0	24.0	13P	1-2041145-3
	0.635	8.2	20.0	25.0	20.0±0.2	26.0	22.0	12P	1-2041145-2
OBSOLETE	-0.585	8.2	18.0	23.0	18.0±0.2	24.0	20.0	11P	1-2041145-1
OBSOLETE	-0.54	8.2	16.0	21.0	16.0±0.2	22.0	18.0	10P	1-2041145-0
	0.49	8.2	14.0	19.0	14.0±0.2	20.0	16.0	9P	2041145-9
	0.44	8.2	12.0	17.0	12.0±0.2	18.0	14.0	8P	2041145-8
OBSOLETE	-0.40	8.2	10.0	15.0	10.0±0.2	16.0	12.0	7P	2041145-7
OBSOLETE	-0.37	4.0	8.0	13.0	8.0±0.2	14.0	10.0	6P	2041145-6
OBSOLETE	-0.32	4.0	6.0	11.0	6.0±0.2	12.0	8.0	5P	2041145-5
	0.26	4.0	4.0	9.0	4.0±0.2	10.0	6.0	4P	2041145-4
	0.20	2.0	2.0	7.0	2.0 ^{+0%} _{-0.08}	8.0	4.0	3P	2041145-3
OBSOLETE	-0.14	2.0	/	5.0	2.0	6.0	2.0	2P	2041145-2
	WEIGHT (g)	F	E	D	C	B	A	POS	P/N

4

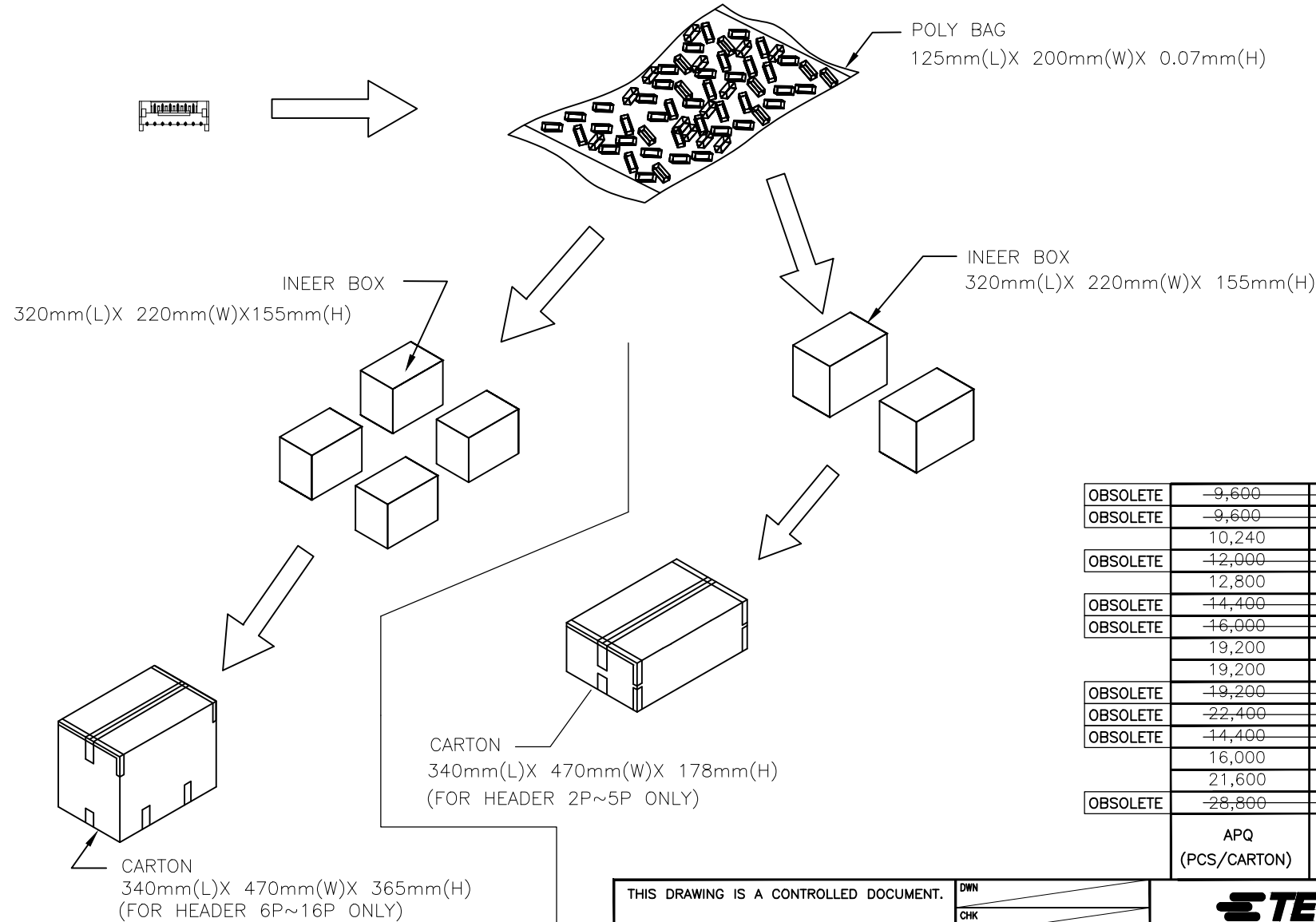
3

2

1

THIS DRAWING IS UNPUBLISHED. RELEASED FOR PUBLICATION
© COPYRIGHT BY ALL RIGHTS RESERVED.

LOC DW	DIST	REVISIONS		
P	LTR	DESCRIPTION	DATE	DWN APVD
		SEE SHEET 1.		



	APQ (PCS/CARTON)	PPQ (PCS/BAG)	CIRCUITS	PART NUMBER
OBSOLETE	-9,600	160	16P	1-2041145-6
OBSOLETE	-9,600	160	15P	1-2041145-5
	10,240	160	14P	1-2041145-4
OBSOLETE	-12,000	200	13P	1-2041145-3
	12,800	200	12P	1-2041145-2
OBSOLETE	-14,400	200	11P	1-2041145-1
OBSOLETE	-16,000	250	10P	1-2041145-0
	19,200	300	9P	2041145-9
	19,200	300	8P	2041145-8
OBSOLETE	-19,200	300	7P	2041145-7
OBSOLETE	-22,400	350	6P	2041145-6
OBSOLETE	-14,400	450	5P	2041145-5
	16,000	500	4P	2041145-4
	21,600	600	3P	2041145-3
OBSOLETE	-28,800	800	2P	2041145-2

THIS DRAWING IS A CONTROLLED DOCUMENT.

DIMENSIONS: MM	TOLERANCES UNLESS OTHERWISE SPECIFIED:	DWN	TE Connectivity	
	0 PLC ± -	CHK	TE TE Connectivity NAME HPI 2.0mm HEADER CONNECTOR, R/A, DIP TYPE	
	1 PLC ± -	APVD		
	2 PLC ± -	PRODUCT SPEC		
	3 PLC ± -	APPLICATION SPEC		
MATERIAL	FINISH	WEIGHT	SIZE	RESTRICTED TO
			A3 00779 C=2041145	
CUSTOMER DRAWING			SCALE	SHEET 2 OF 2
				REV A3