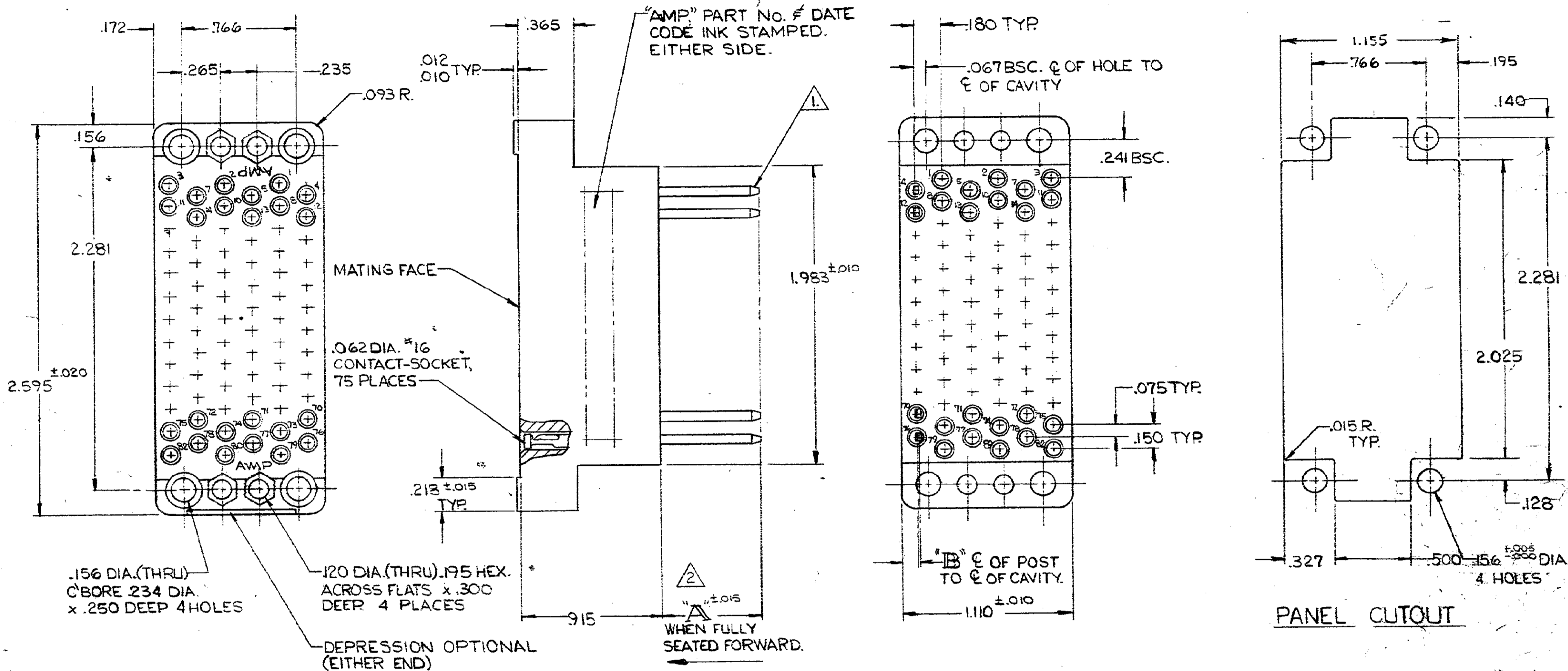


DESIGNED BY AMP INCORPORATED. ALL RIGHTS RESERVED. AMP PRODUCTS ARE COVERED BY PATENTS AND/OR PATENTS PENDING.

REVISIONS				
ZONE	LTR	DESCRIPTION	DATE	APPROVED
	M	OBsolete -1 PER ECN B05754	10-10-89	J.S.
	N	REV PER ECN B05754	1-22-92	
	P	OBsolete -4 PER ECN B06103	5-27-92	RW



CUST 205909

- 1. CONTACTS ARE SEMI-AUTOMATICALLY WIRABLE.
- 2. POST LENGTH WILL ACCEPT * TERMINATIONS.
- 3. THE MAX. WIRE TO BE USED WITH THIS CONNECTOR IS NO. 24 AWG.
- 4. 205909-6: 'A' = .125

.031 X .062	350	.555	.810	.000
.045 ²	350	.555	.810	.005
.022 X .036	261	.470	.659	.010
.025 ²	261	.470	.659	.017
POST	* 1 TERM	* 2 TERM	* 3 TERM	'B'

UNLESS OTHERWISE SPECIFIED, DIMENSIONS ARE IN INCHES. TOLERANCES ON: DECIMALS ±.005 ANGLES ± 1/4	CONTRACT NO.	AMP INCORPORATED HARRISBURG, PENNSYLVANIA	
	DR <i>R. Matthews</i> 2-14-72	NAME SOCKET ASSY, 75 POSITION, AUTOWIREABLE, ST'D 'M'	
MATERIAL SEE SHEET 2	CHK <i>R. Matthews</i> 2/16/72	SIZE	CODE IDENT NO.
	APPD <i>R. Matthews</i> 2/16/72	C	00779
	REL <i>S. Anderson</i> 2-18-72	NUMBER	205909
	DSGN APPD	SCALE	2-1
	OTHER APPD	SHEET 1 OF 2	

CUSTOMER DRAWING

PRINT DIST MOD 36 4