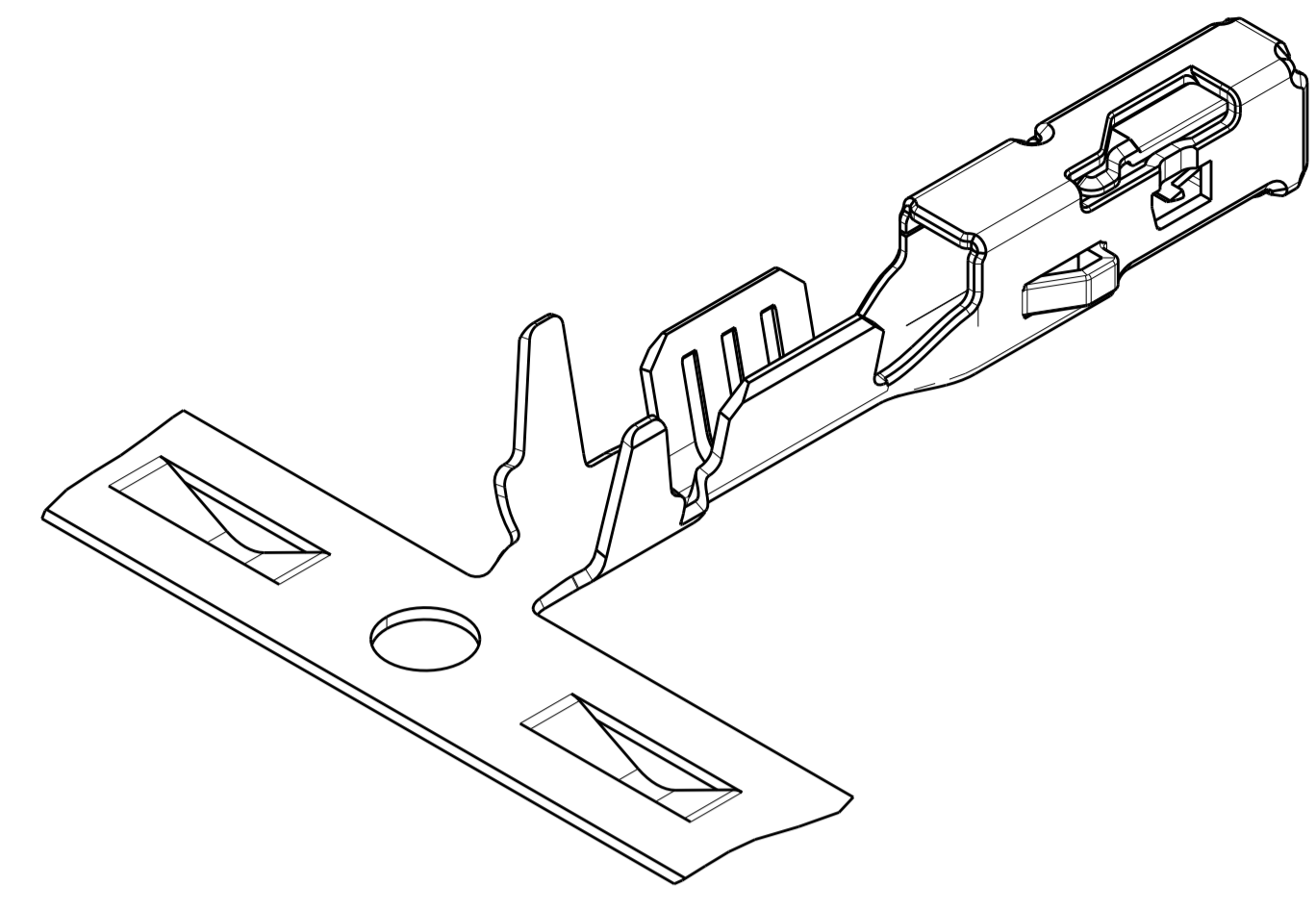
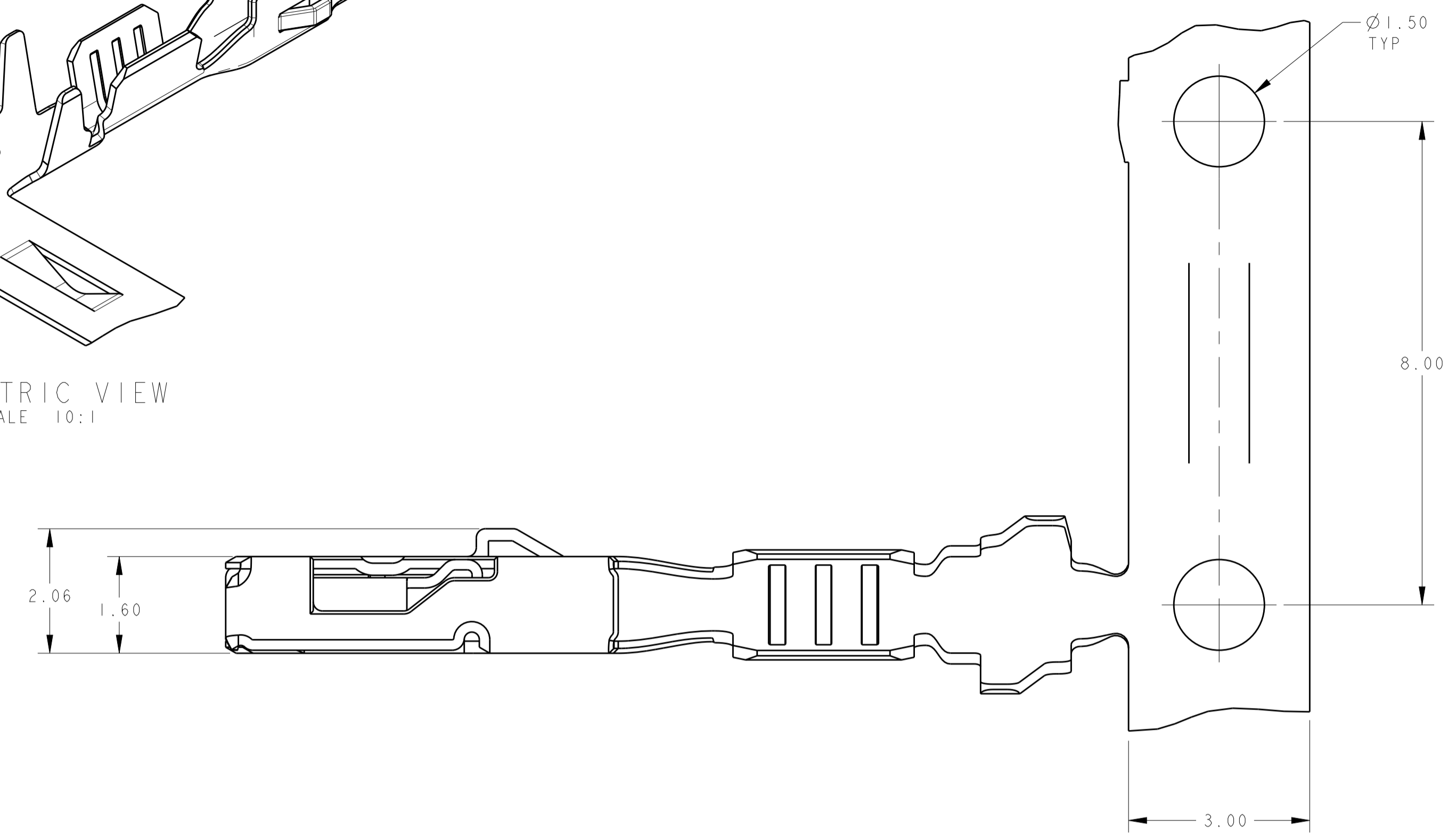


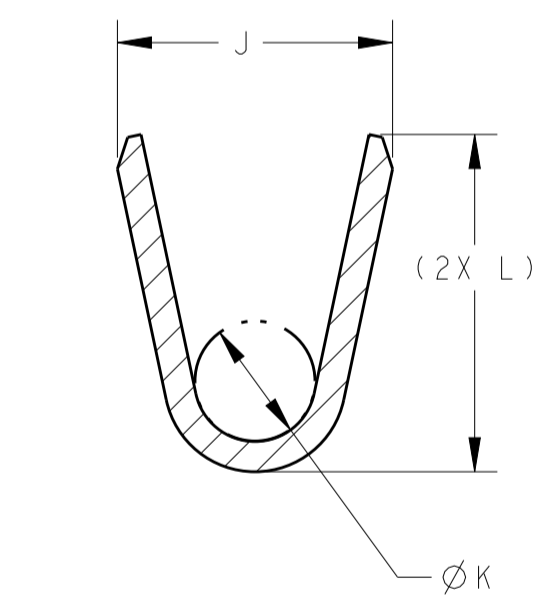
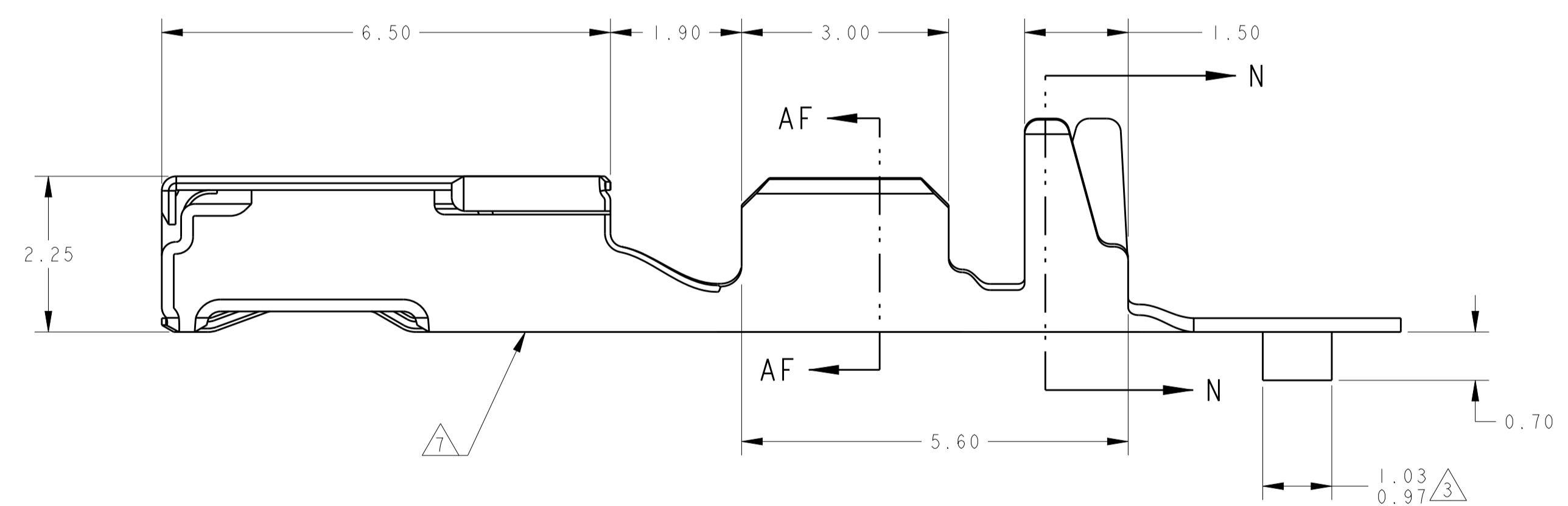
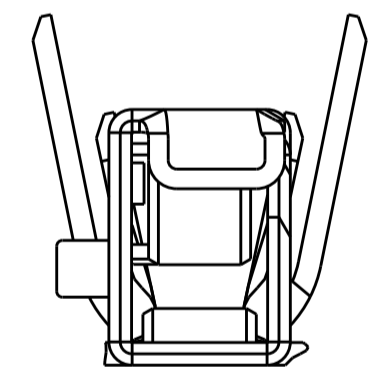
| REVISIONS | | | | |
|-----------|------|---------------------------|-----------|---------|
| P. | LTN. | DESCRIPTION | DATE | APVD. |
| C | | REVISED PER ECR-16-005516 | 25APR2016 | DLD CJS |



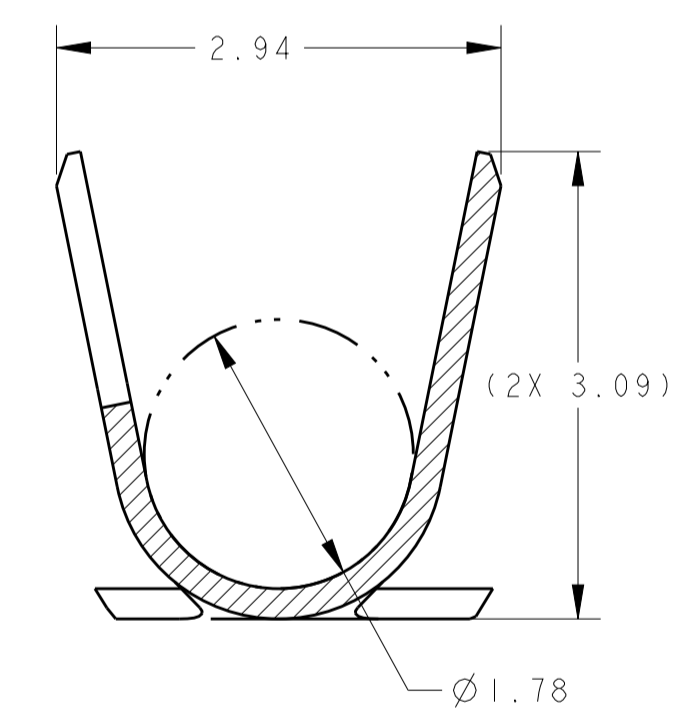
ISOMETRIC VIEW
SCALE 10:1



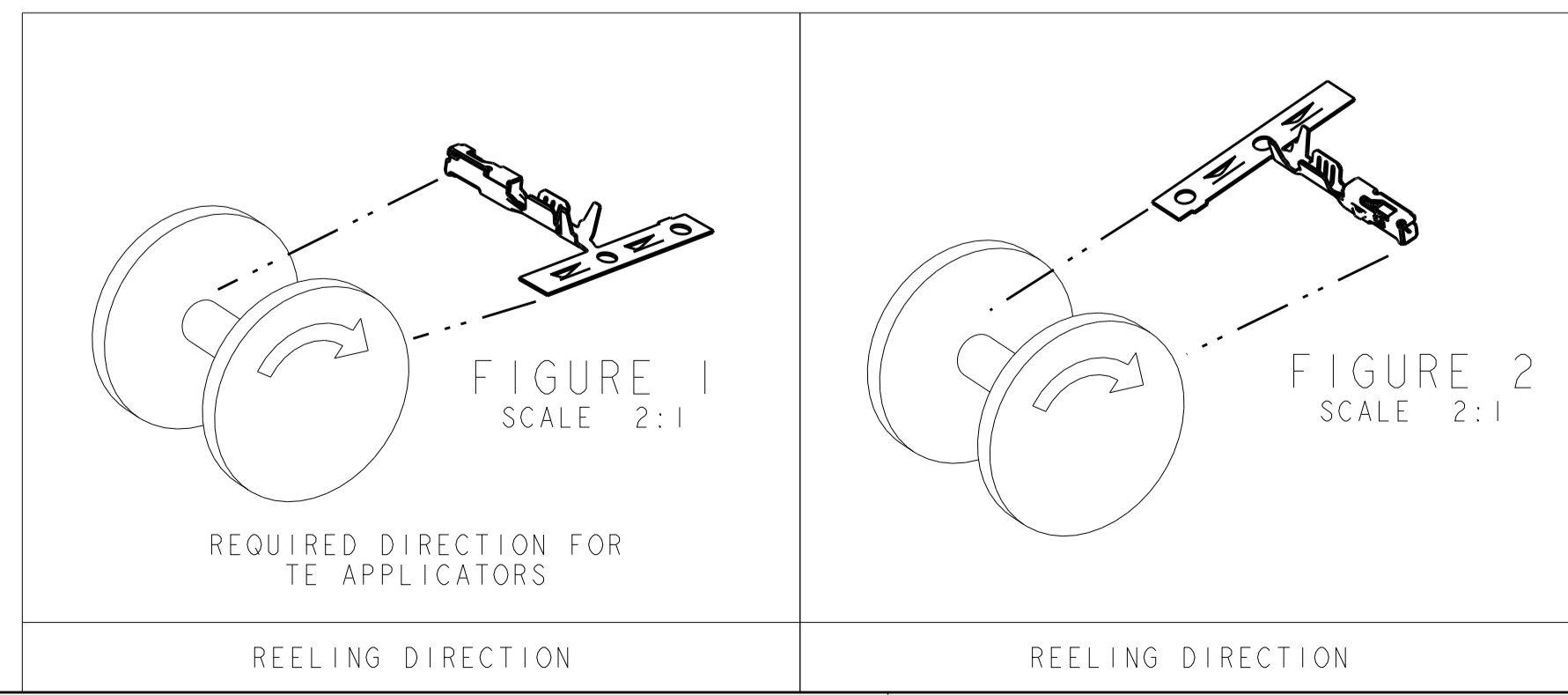
- 1 MATERIAL: 0.2mm THICK CuNiSi ALLOY
- 2 FINISH: PRE-PLATED WITH 1.00µm MIN BRIGHT TIN.
- 3 MATERIAL ID FEATURE IN "DOWN" POSITION.
- 4. THIS PRODUCT WAS VALIDATED TO GMW3191, DEC 2007, VI, T3, S2.
- 5. THIS PRODUCT IS DESIGNED TO BE COMPATIBLE WITH SEALED APPLICATIONS.
- 6. NORMAL FORCE 350 GRAMS REFERENCE.
- 7 STAMPED WITH LETTER "H" TO INDICATE HIGH FORCE ON THIS GENERAL SURFACE.
- 8. TERMINAL HAS NYE LUBRICANTS NYETACT 568J-50-UV PERFORMANCE LUBE/GREASE APPLIED. THIS IS A WHITISH COLORED LUBE. AMOUNT AND VISIBILITY MAY VARY.



SECTION AF-AF
SCALE 20:1



SECTION N-N
SCALE 20:1



| INSULATION DIAMETER | L | K | J | REELING DIRECTION | FINISH | mm ² | AWG | PART NUMBER |
|---------------------|------|------|------|-------------------|--------|-----------------|-------|-------------|
| 2.06 MAX | 2.43 | 1.00 | 1.96 | FIGURE 2 | 2 | 0.75 | 18 | 2098165-4 |
| 1.50-1.85 | 2.23 | 0.80 | 1.82 | FIGURE 2 | 2 | 0.35-0.50 | 20-22 | 2098165-3 |
| 2.06 MAX | 2.43 | 1.00 | 1.96 | FIGURE 1 | 2 | 0.75 | 18 | 2098165-2 |
| 1.50-1.85 | 2.23 | 0.80 | 1.82 | FIGURE 1 | 2 | 0.35-0.50 | 20-22 | 2098165-1 |

| | | | | | | | | | | | |
|-------------|--------|--|-------|-------------------------|--|-------------------------|--|--------------------------|--|----------------------|--|
| DIMENSIONS: | | TOLERANCES UNLESS OTHERWISE SPECIFIED: | | DWN F. KINSEY 16JAN2009 | | CHK F. KINSEY 16JAN2009 | | APVD C. SCHMID 07MAY2009 | | NAME | |
| mm | 0 PLC | ± | | PRODUCT SPEC | | APPLICATION SPEC | | SIZE | | CAGE CODE DRAWING NO | |
| | 1 PLC | ± | | RESTRICTED TO | | 114-13183 | | A100779 | | C=2098165 | |
| | 2 PLC | ± | ±0.15 | CUSTOMER DRAWING | | SCALE 15:1 | | SHEET 1 OF 1 | | REV C | |
| | 3 PLC | ± | | | | | | | | | |
| | 4 PLC | ± | | | | | | | | | |
| | ANGLES | ± | | | | | | | | | |
| | FINISH | - | | | | | | | | | |