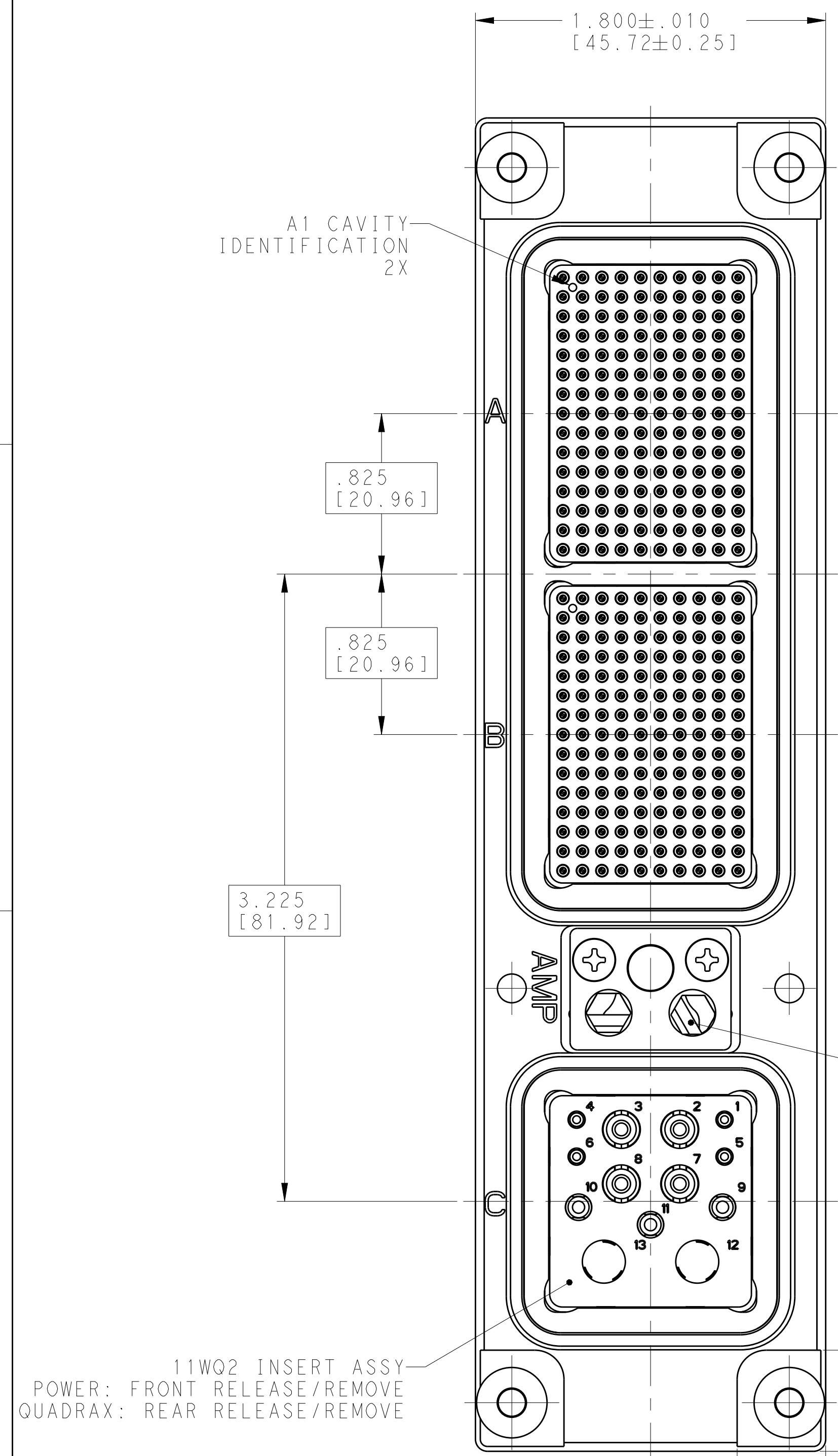


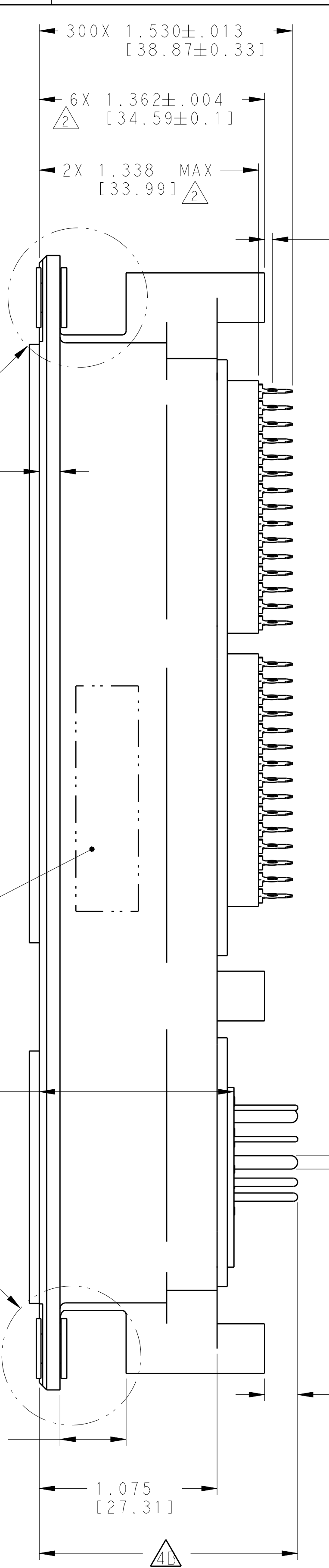
REVISIONS					
P	LTN	DESCRIPTION	DATE	OWN	APVD
S	REV PER ECO-19-018819		12-16-19	CT	RL



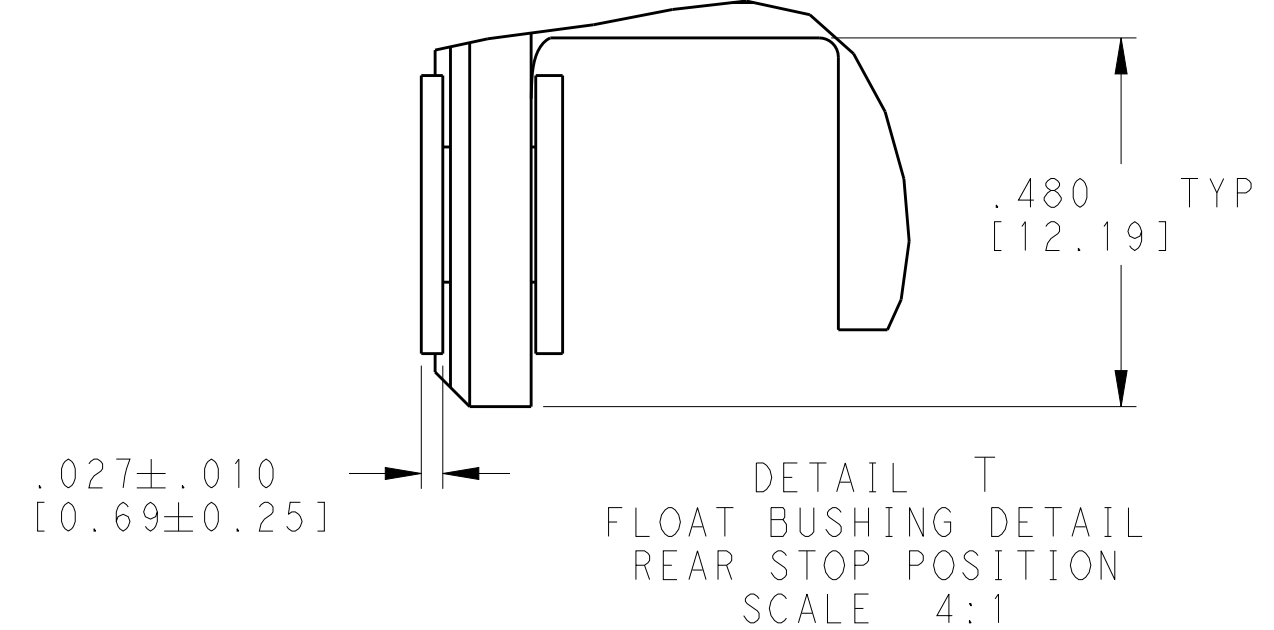
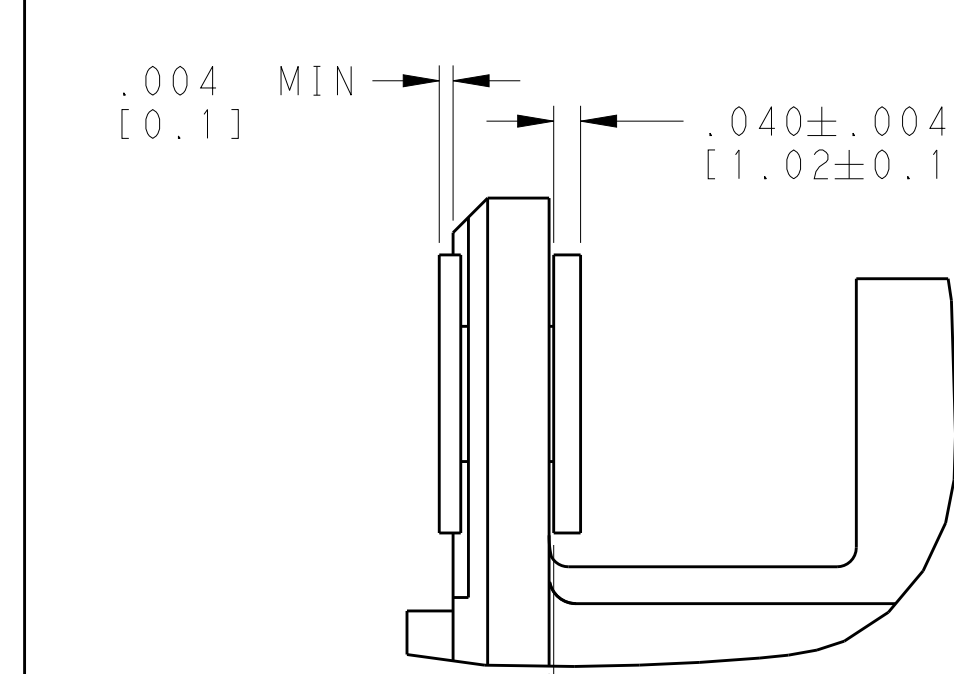
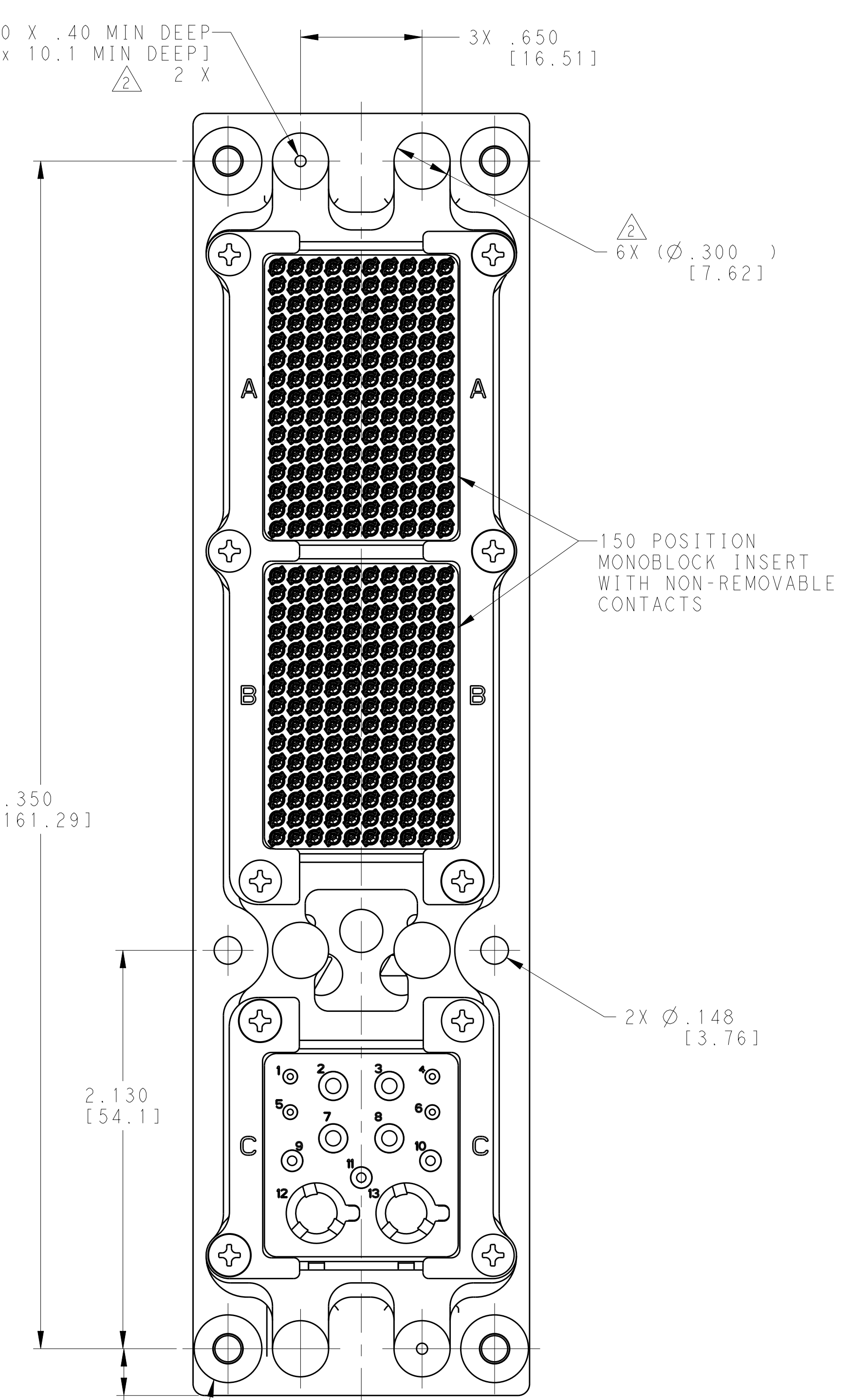
ESD DUST COVER
(INSTALLED FOR SHIPPING)

SEE DETAIL S

SEE DETAIL T



$\varnothing .059 + .004 / - .000$ X $.40$ MIN DEEP
[$\varnothing 1.5 + 0.10 / - 0.00$ X 10.1 MIN DEEP] 2 X
 $.064 \pm .013$ [1.63 ± 0.33]
(STANDOFF TO C/L OF EON)



FLOAT BUSHING
4 PLC
4 X
I.D. $.140 \pm .002$ [3.56 ± 0.05]
O.D. $.362 \pm .003$ [9.20 ± 0.08]

PRELIMINARY PART- NOT RELEASED FOR PRODUCTION

REMARKS	PART NO.
SAME AS -3 BUT WITHOUT QUADRAX CONTACTS	2101787-4
WITH SIGNAL AND POWER CONTACTS Δ 2X HOT TIN DIPPED	2101787-3
WITH SIGNAL CONTACT ONLY	2101787-2
Δ 4 WITH SIGNAL AND POWER CONTACTS	2101787-1

THIS DRAWING IS A CONTROLLED DOCUMENT. DWN: C.C. THOMAS 08FEB2010, CHK: K. HOGAN 08FEB2010, APVD: K. HOGAN 08FEB2010

DIMENSIONS: INCHES(mm)

TOLERANCES UNLESS OTHERWISE SPECIFIED:

0 PLC	±
1 PLC	±
2 PLC	±
3 PLC	±
4 PLC	± .005 (0.13)
ANGLES	±

MATERIAL: SEE CALLOUTS

FINISH: -

WEIGHT: -

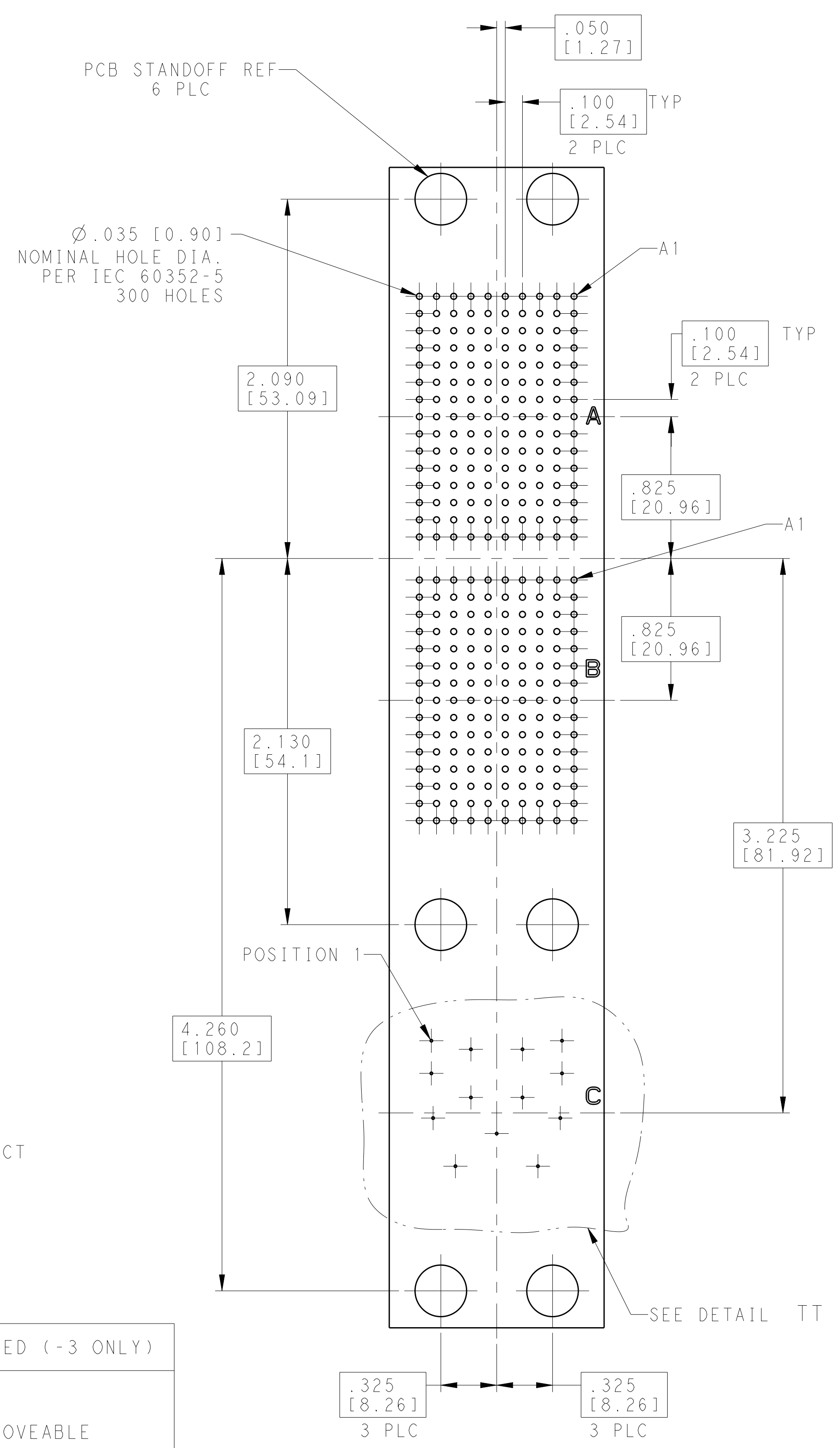
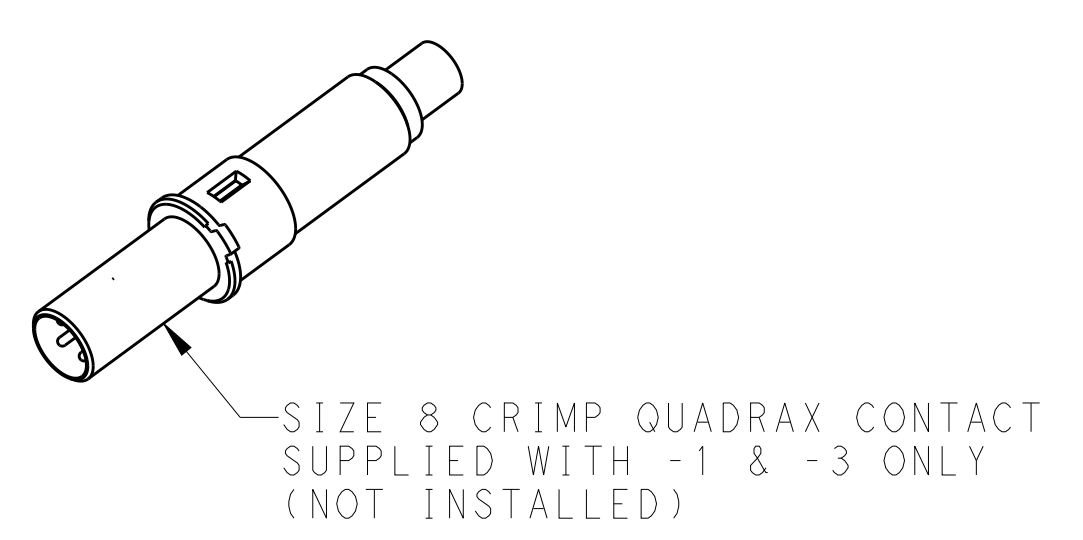
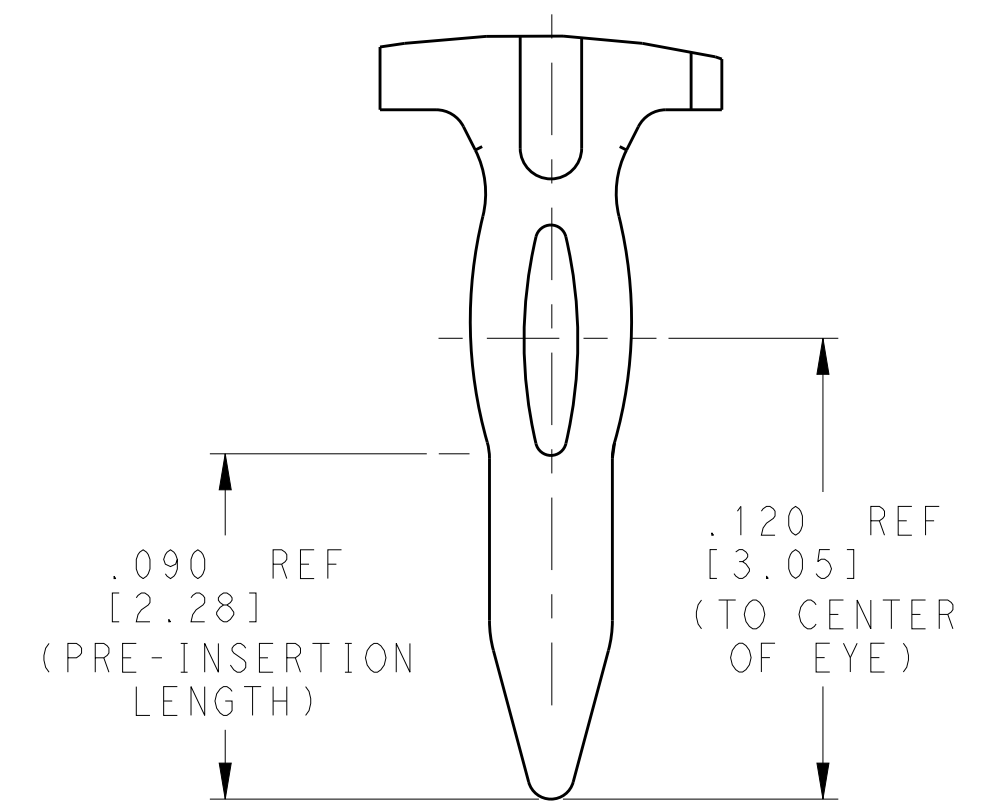
CUSTOMER DRAWING

NAME: RECEPTACLE ASSEMBLY, SIZE 2, ARINC 600 WITH SZ 22 PRESS FIT CONTACTS

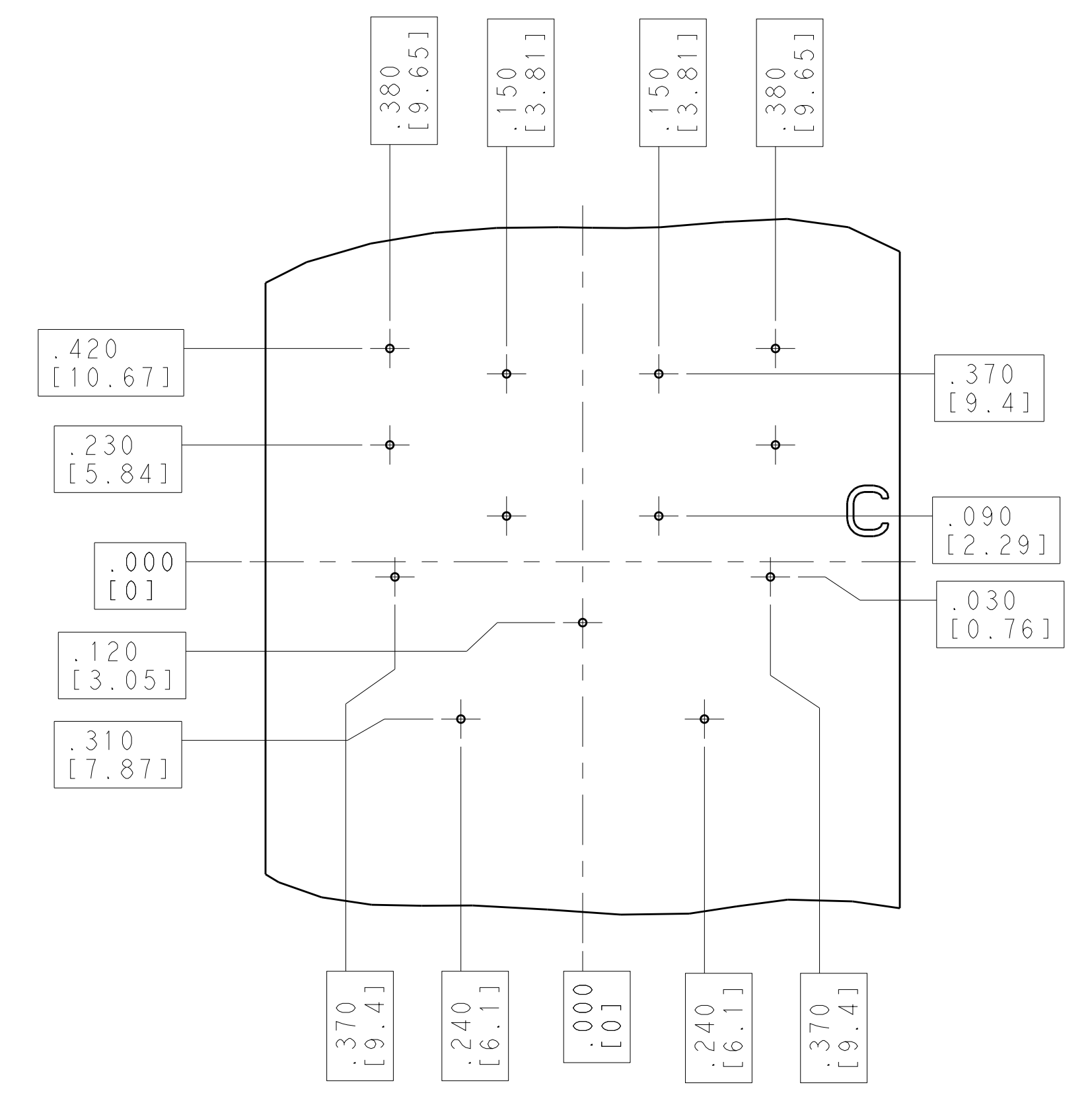
SIZE: CAGE CODE DRAWING NO: A100779C=2101787

SCALE: 2:1 SHEET 1 OF 2 REV S

1. RECEPTACLE IS INTERMATEABLE TO ARINC 600 STYLE SIZE 2 PLUG ASSEMBLY
2. ASSEMBLED CONNECTOR FEATURES COMPLY WITH ARINC 600 SPECIFICATION EXCEPT AS NOTED.
3. ASSEMBLED CONNECTOR IS IN AGREEMENT, AS NOTED, WITH THALES TECHNICAL SPECIFICATION NAV/09/007630-05.
4. THE FOLLOWING CONTACTS FOR THE 13CQ2 INSERT ARE INCLUDED WITH 2101787-1 ONLY:
 (NOTE: CONTACTS ARE NOT PRE-TINNED)
 SIZE 12 POSTED PIN CONTACT, TE PART NO. 1-448140-5; QTY = 4- INSTALLED
 SIZE 16 POSTED PIN CONTACT, TE PART NO. 1-448139-8; QTY = 3- INSTALLED
 SIZE 20 POSTED PIN CONTACT, TE PART NO. 2-448138-3; QTY = 4- INSTALLED
 SIZE 8 CRIMP PIN QUADRAX CONTACT, TE PART NO. 1445692-1; QTY = 2- NOT INSTALLED
 (4A) THE MINIMUM POST EXTENSION BEYOND STANDOFF IS: .160 [4.06].
 (4B) THE MAXIMUM POST EXTENSION FROM THE FRONT FACE IS: 1.582 [40.18].
5. MANUFACTURERS NAME OR LOGO, MFG'S PART NO. AND DATE CODE (YY-WW) MARKED IN AREA SHOWN.
6. ESTIMATED WEIGHT OF CONNECTOR ASSEMBLY AS SHOWN: TBD.
7. MAX LOCKING TORQUE FOR M3 THREADED INSERTS: 0.45 N-m (4.0 in-lbf)
8. CONDUCTIVE DUST COVER INSTALLED FOR SHIPPING.
9. EYE OF THE NEEDLE CONTACT DESIGN CONSIDERATIONS:
 (A) PCB HOLE DIAMETER: 0.90mm PER IEC 60352-5
 (B) MINIMUM PCB THICKNESS: .063 [1.6]
 (C) PCB PLATING: Sn PLATE RECOMMENDED
 (D) NORMAL INSERTION FORCE: 8 lb MAX PER CONTACT;
 900 lb AVERAGE PER 150 POSITION INSERT ASSEMBLY
10. KEYING TO BE INSTALLED AS SHOWN: KEY POSITIONS "4"- "BLANK"- "5"
11. CONNECTOR PACKAGING SHALL HAVE A LABEL WHICH WILL INCLUDE, AT A MINIMUM, THE THALES PART NUMBER, THE TE PART NUMBER AND THE MANUFACTURING DATE CODE.
12. THE FOLLOWING CONTACTS FOR THE 13CQ2 INSERT ARE INCLUDED WITH 2101787-3 ONLY:
 SIZE 12 POSTED PIN CONTACT, TE PART NO. 2-448140-3; QTY = 4- INSTALLED
 SIZE 16 POSTED PIN CONTACT, TE PART NO. 3-448139-4; QTY = 3- INSTALLED
 SIZE 20 POSTED PIN CONTACT, TE PART NO. 3-448138-2; QTY = 4- INSTALLED
 SIZE 8 CRIMP PIN QUADRAX CONTACT, TE PART NO. 1445692-1; QTY = 2- NOT INSTALLED
 (4A) THE MINIMUM POST EXTENSION BEYOND STANDOFF IS: .160 [4.06].
 (4B) THE MAXIMUM POST EXTENSION FROM THE FRONT FACE IS: 1.582 [40.18].



RECOMMENDED P.C. BOARD LAYOUT (BACK VIEW)



COMPONENT	MATERIAL	FINISH	REMARKS
POWER CONTACTS (SIZE 12, 16 AND 20)	COPPER ALLOY	.000050 [1.27µm] MIN GOLD OVER NICKEL	HOT TIN DIPPED (-3 ONLY)
SIZE 22 SOCKET CONTACTS QTY = 300	BODY: COPPER ALLOY HOOD: STAINLESS STEEL	BODY: .000050 [1.27µm] MIN GOLD ON MATING TINES, Sn ON EON TAIL, BOTH OVER NICKEL PLATE HOOD: PASSIVATED	NON REMOVEABLE
150 POSITION INSERT 2 PLC	THERMOPLASTIC	NONE	ONE PIECE DESIGN WITH NON-REMOVABLE CONTACTS
RETENTION PLATE SCREW	STAINLESS STEEL	PASSIVATED	
FLOAT BUSHING 4 PLC	STAINLESS STEEL	PASSIVATED	
11WQ2 INSERT ASSY	THERMOSET	--	POWER: FRONT RELEASE/REMOVE QUADRAX: REAR RELEASE/REMOVE
SHELL	ALUMINUM ALLOY PER ASTM-B211, 6061-T6 OR ASTM-B209, 2024-T4	CHROMATE CONVERSION PER MIL-DTL-5541 TYPE II, CLASS 3	
RETENTION PLATES	ALUMINUM ALLOY PER ASTM-B209		

THIS DRAWING IS A CONTROLLED DOCUMENT.

TE Connectivity

RECEPTACLE ASSEMBLY, SIZE 2, ARINC 600 WITH PRESS FIT CONTACTS

SCALE 2:1 SHEET 2 OF 2 REV S