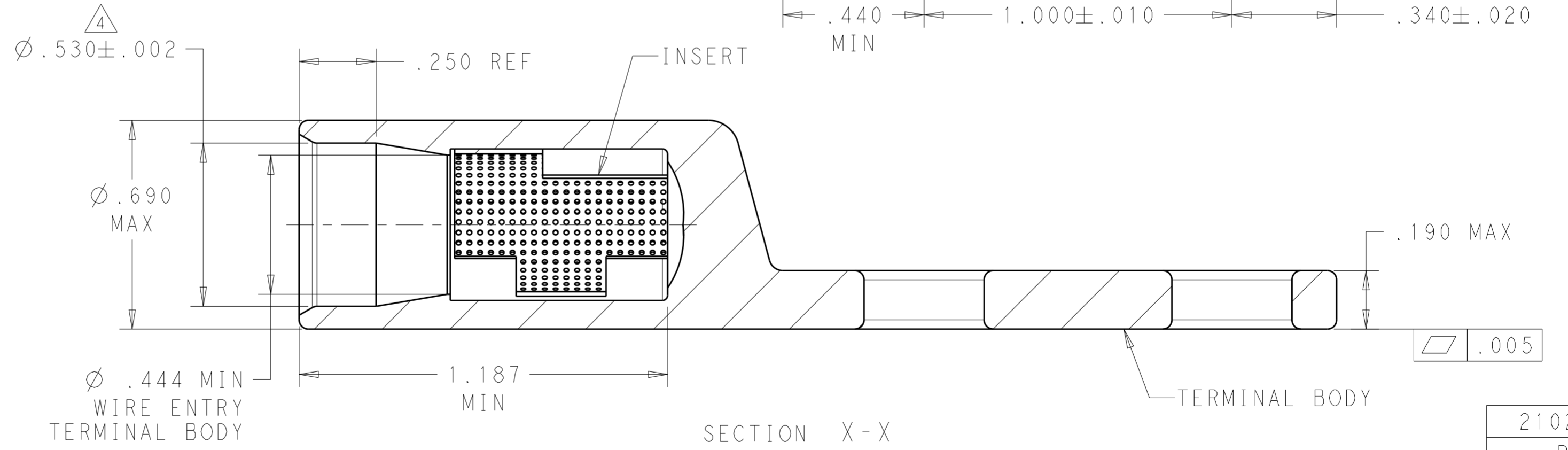
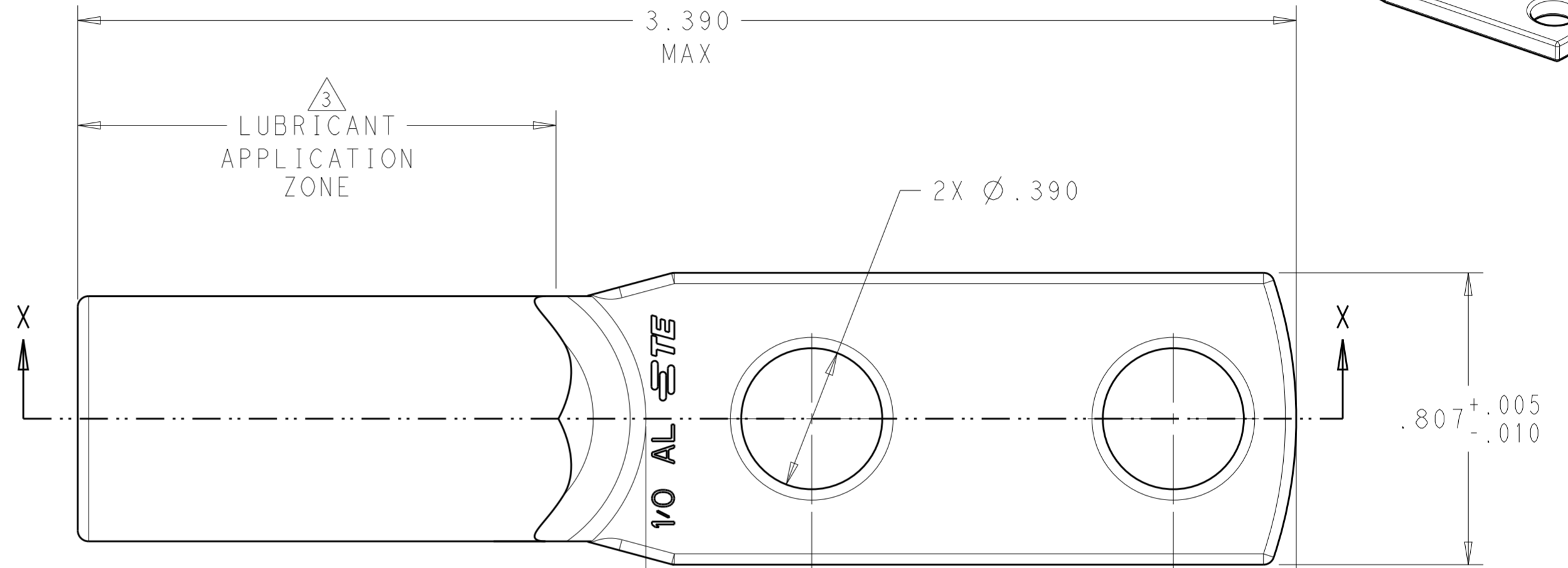
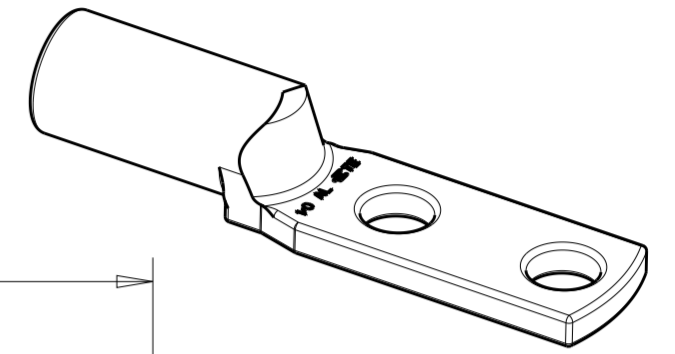


THIS DRAWING IS UNPUBLISHED. RELEASED FOR PUBLICATION 20
 © COPYRIGHT 20 BY - ALL RIGHTS RESERVED.

LOC		DIST		REVISIONS			
P	LTR	DESCRIPTION	DATE	DWN	APVD		
D		REV PER ECO 19-019307	3-6-20	CT	PD		

- MATERIAL:
 BODY: ALUMINUM PER ASTM B317
 INSERT: BRASS PER ASTM B36
- FINISH:
 BODY: .000600 MIN MATTE TIN PER ASTM B545
 OVER .000060 MIN NICKEL PER ASTM B733.
 INSERT: .000150 MIN MATTE NICKEL PER QQ-N-290
- PTFE DRY LUBRICANT 360 DEGREE ON OUTER DIAMETER OF CRIMP BARREL IN ZONE SHOWN.
- WIRE INSULATION RANGE: .425-.513.
- SEE TE CONNECTIVITY APPLICATION SPEC. 114-32098 FOR APPLICATION REQUIREMENTS.
- SEE TE CONNECTIVITY INSTRUCTION SHEET 408-32087 FOR TOOLING AND CRIMP INSTRUCTIONS, FIGURE 3 FOR WIRE STRIPPING DETAIL.



2102580-1
 PART NUMBER

THIS DRAWING IS A CONTROLLED DOCUMENT.		DWN Brent D. Yohn 07APR2014	TE Connectivity	
DIMENSIONS: IN		CHK K.A. DeBock 07APR2014		
TOLERANCES UNLESS OTHERWISE SPECIFIED: 0 PLC ±- 1 PLC ±- 2 PLC ±.01 3 PLC ±.005 4 PLC ±.0005 ANGLES ±1		APVD K.A. DeBock 07APR2014	NAME TERMINAL ASSEMBLY ALUMINUM, SRAIGHT, DUAL HOLE SIZE 1/0	
MATERIAL SEE CALL-OUT		FINISH SEE-CALL-OUT	PRODUCT SPEC -	APPLICATION SPEC -
		WEIGHT 25.38GRAMS	SIZE A200779	DRAWING NO C-2102580
		CUSTOMER DRAWING	SCALE 3:1	SHEET 1 OF 1
			RESTRICTED TO	REV D