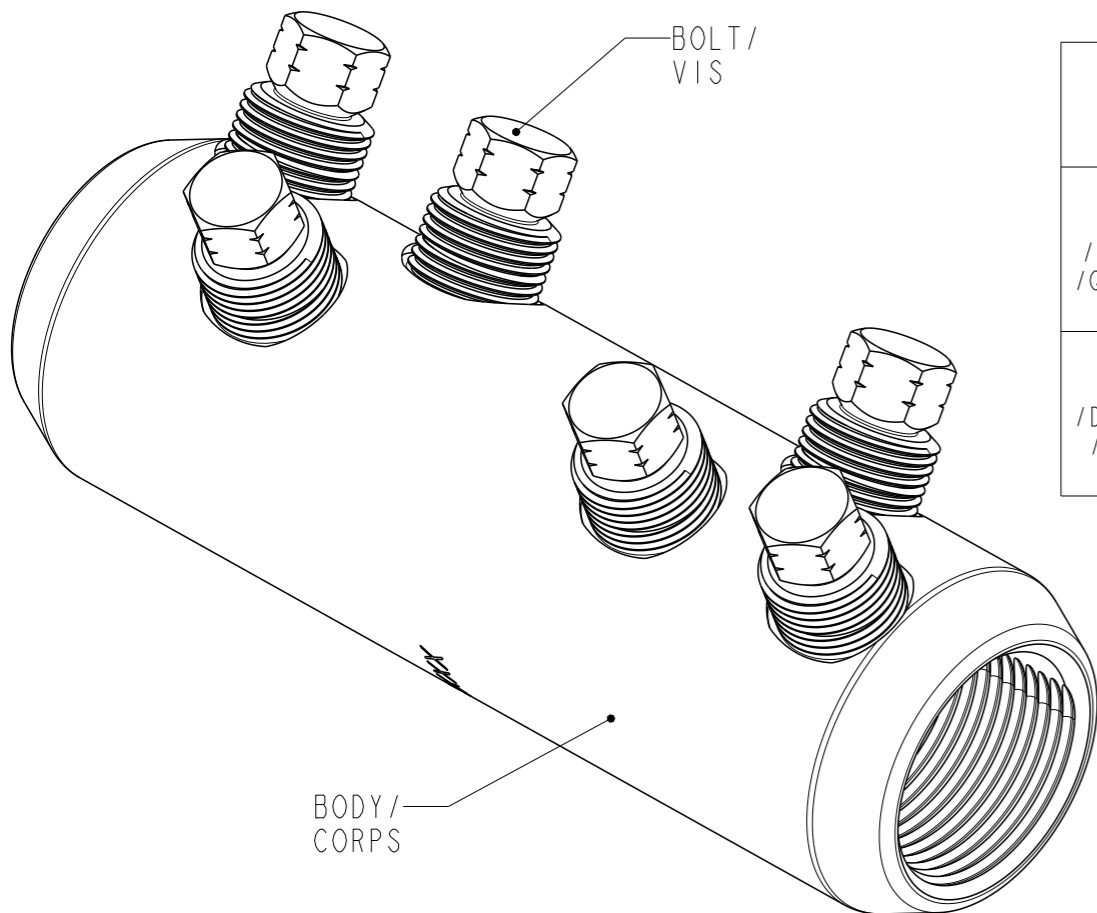
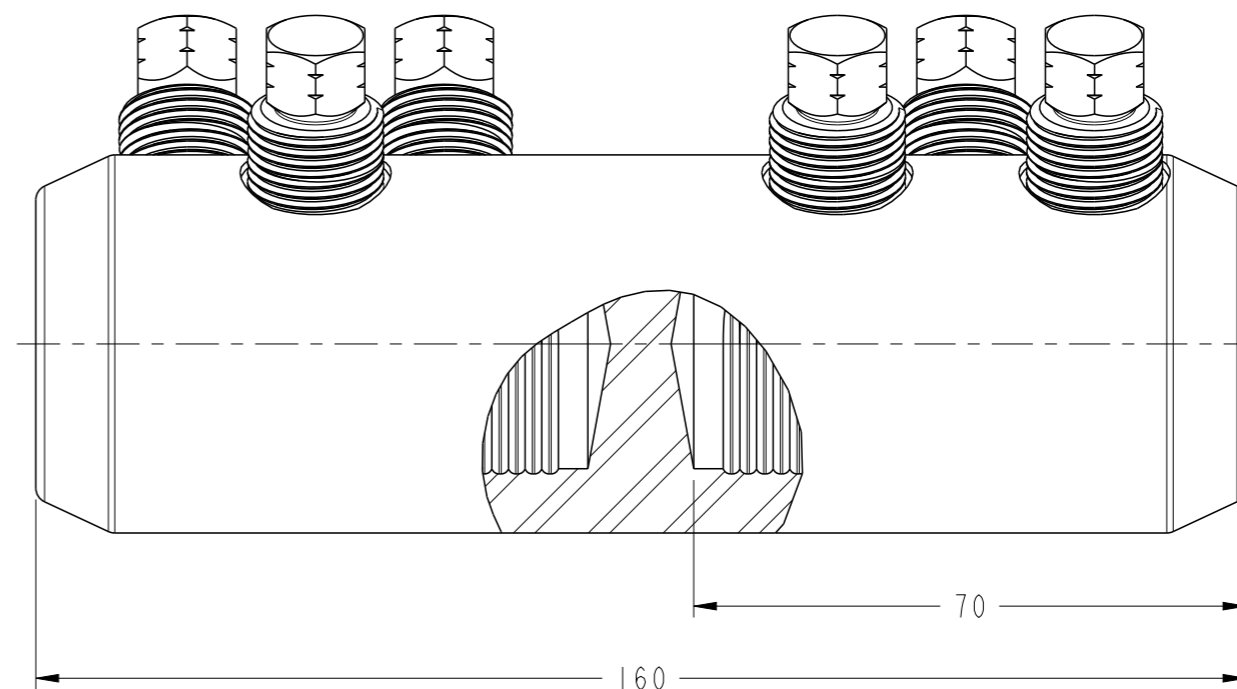
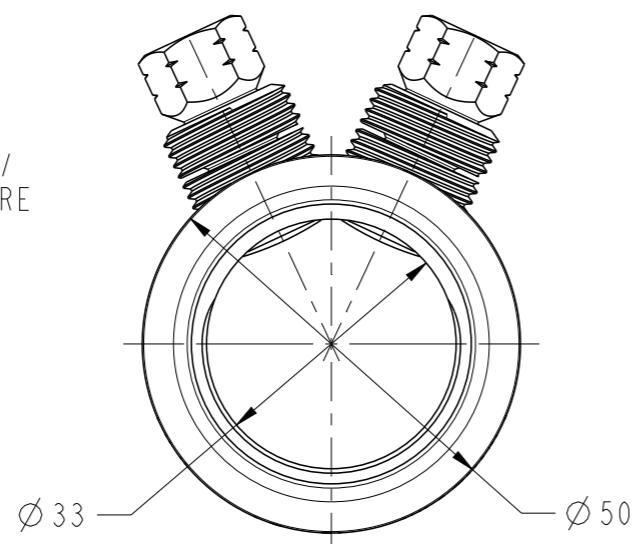
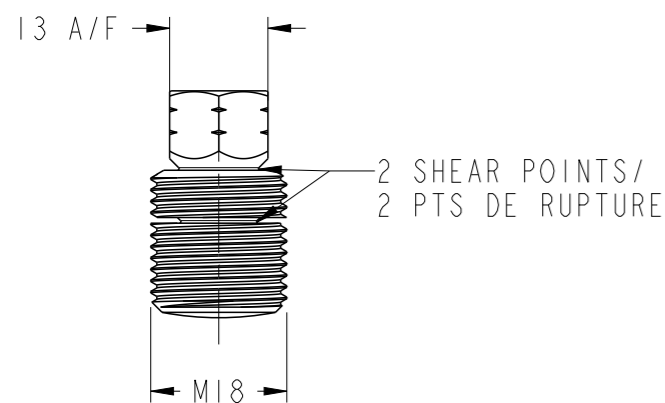


REVISIONS

P	LTR REV	DESCRIPTION MODIFICATIONS	DATE	DWN DESS.	APVD APP.
	A	CREATION	01DEC2009	BM	NA
	B	UPDATE CABLE RANGE TAKING	02SEP2019	BM	NA

BSMB-630 MK2	2107246-1
DESCRIPTION	PART NUMBER



	AL				CU	
	ROUND STRANDED /Rond câblé /RM	ROUND SOLID /Rond solide /RE	SECTOR STRANDED /Sectoral câblé /SM	SECTOR SOLID /Sectoral câblé /SE	ROUND STRANDED /Rond câblé /RM	SECTOR STRANDED /Sectoral câblé /SM
CONDUCTOR CROSS-SECTION /Section conducteur /Querschnittsbereich mm <sup>2</sup>	500-630	500-630	-	-	500-630	-
CONDUCTOR DIAMETER /Diamètre conducteur /Leiterdurchmesser mm	Ø25.3-Ø32.5	Ø24-Ø28.4	-	-	Ø25.3-Ø32.5	-

TOLERANCES UNLESS OTHERWISE SPECIFIED TOLERANCES NON SPECIFIEES: -

THIS DRAWING IS A CONTROLLED DOCUMENT.  
CE PLAN EST UN DOCUMENT CONTROLE PAR TYCO ELECTRONICS CORPORATION.  
IL EST SUSCEPTIBLE D'ETRE REVISE. POUR OBTENIR LA DERNIERE REVISION,  
CONTACTER LE SERVICE TECHNIQUE DE TYCO ELECTRONICS SIMEL SAS,  
21220 GEVREY-CHAMBERTIN, FRANCE.

DWN/DESSINE 01DEC2009  
B. MILLOT

CHK/VERIFIE -  
A. GUICHARD

APVD/APPROUVE -  
N. ALMEIDA

PRODUCT SPEC  
SPEC. PRODUIT -

APPLICATION SPEC  
SPEC. APPLICATION -

NAME / TITRE  
BSMB-630 MK2

SIZE FORMAT A3

CAGE CODE -

DRAWING NO No PLAN  
C=2107246

RESTRICTED TO RESERVE A

MATERIAL MATIERE AL ALLOY

FINISH FINITION TINNED

WEIGHT MASSE APPROX. 540 g

CUSTOMER DRAWING /PLAN CLIENT

UNIQUEMENT POUR REFERENCE

SCALE ECHELLE 1:1

SHEET FEUILLE 1 OF DE 1

REV B