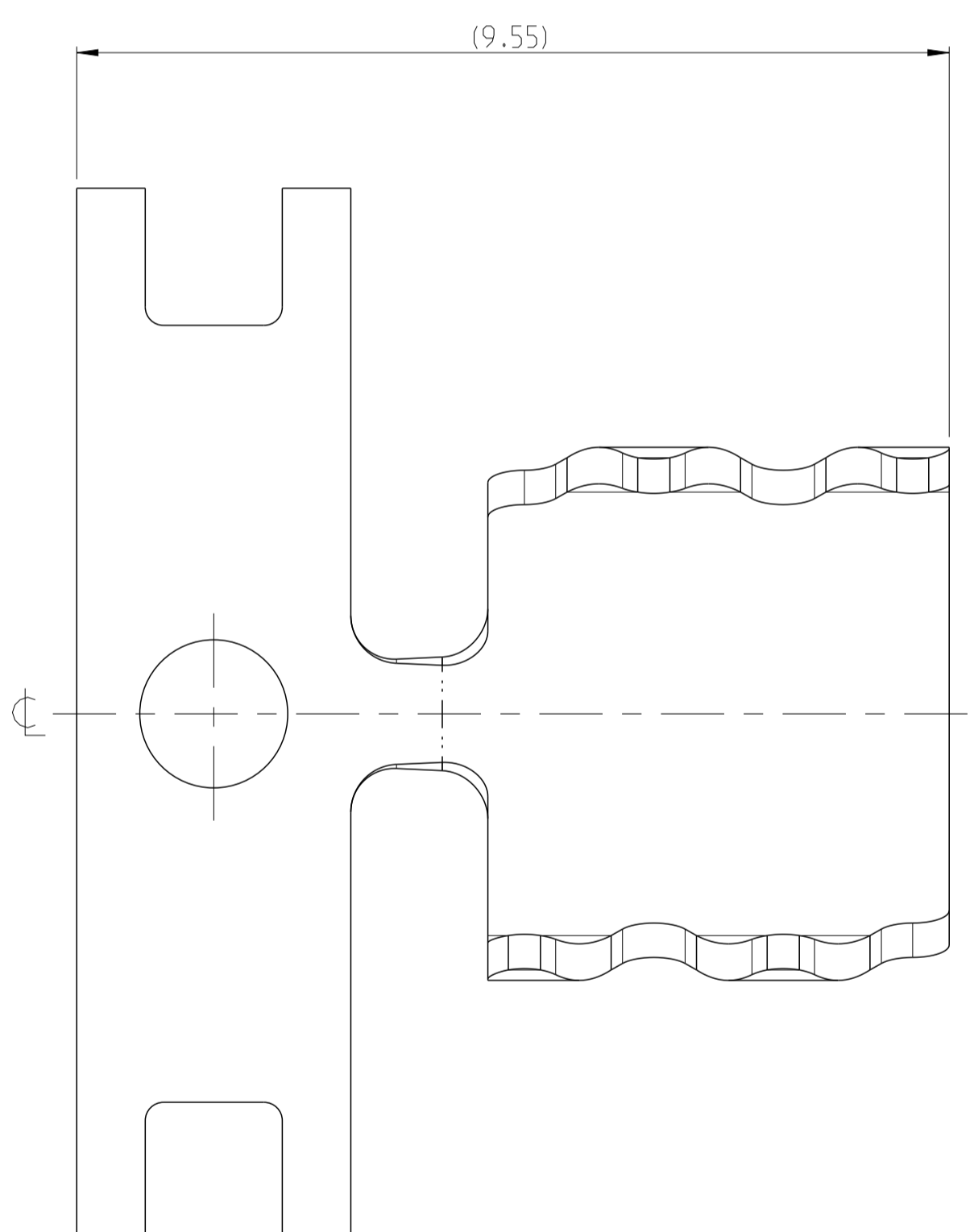
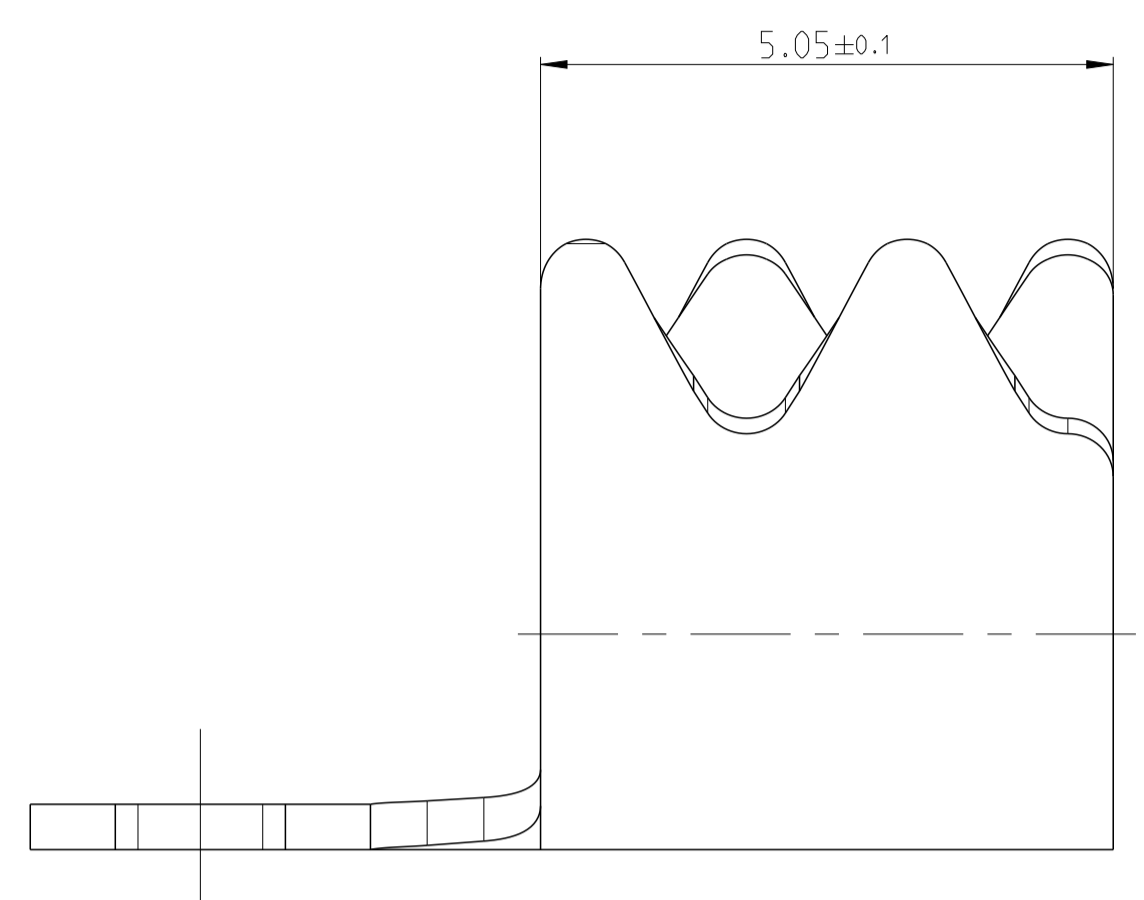
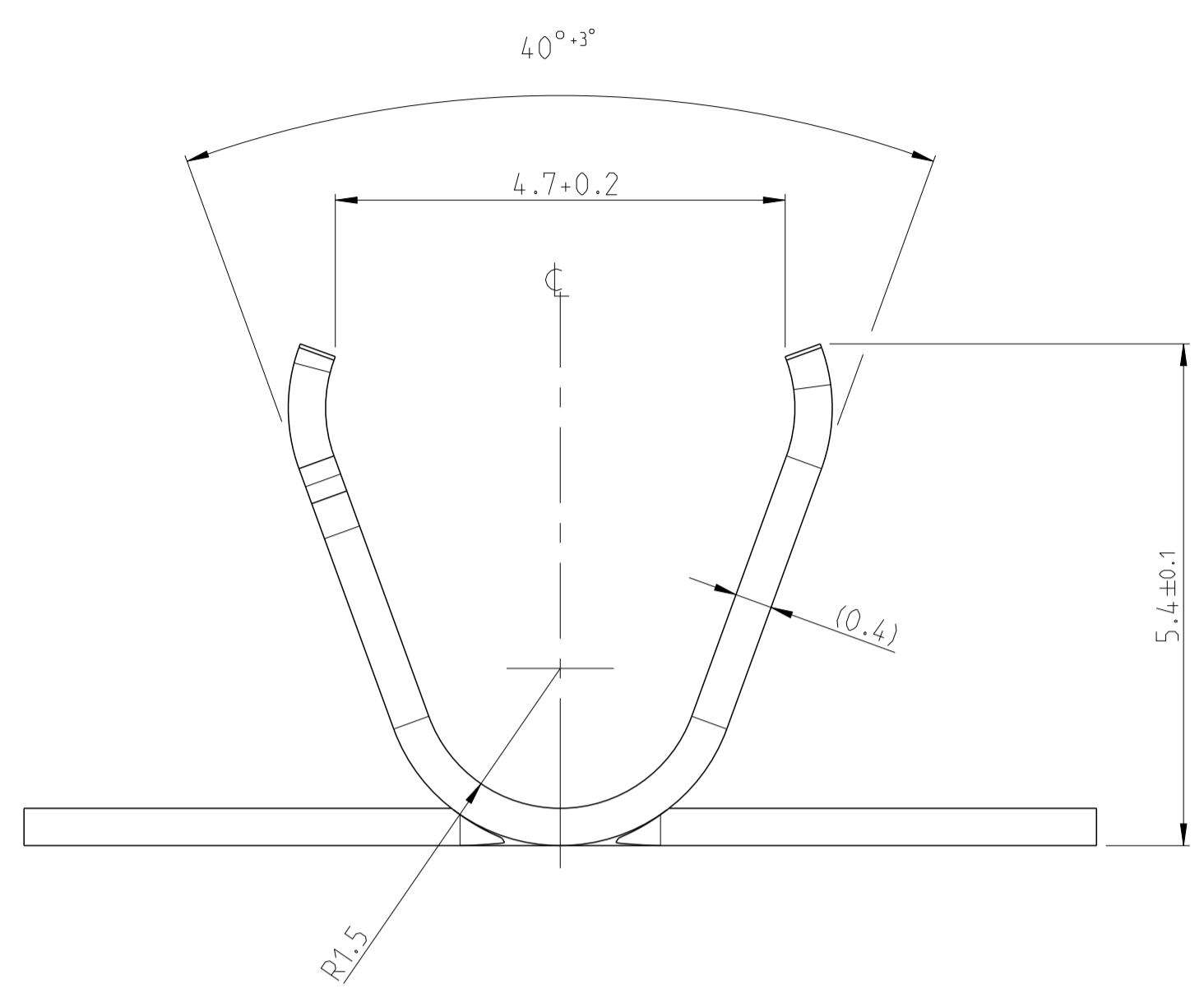
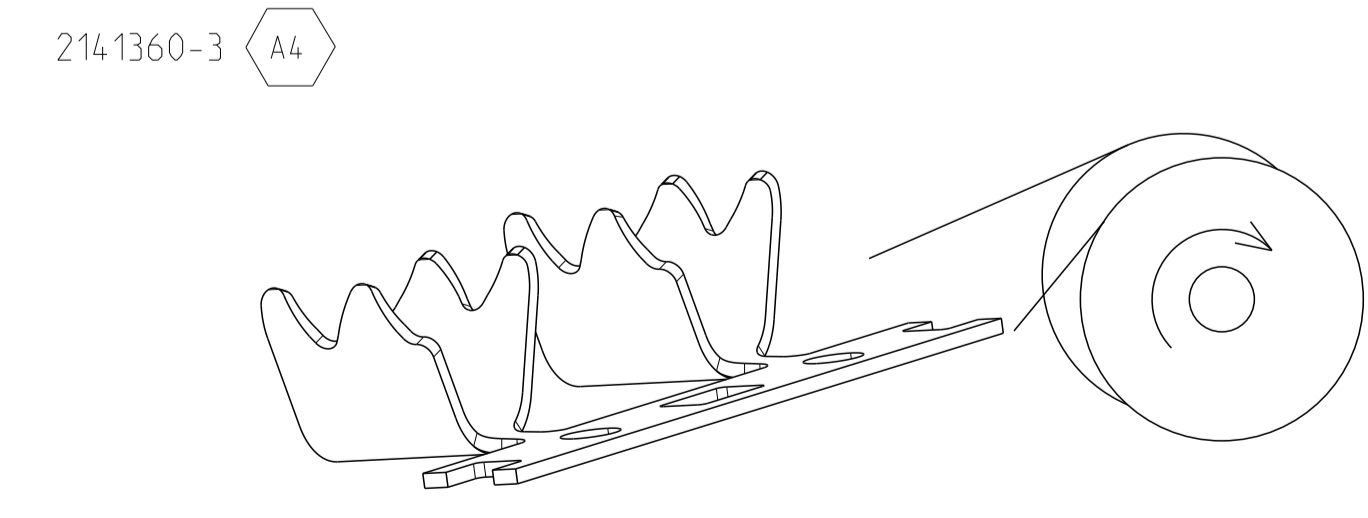
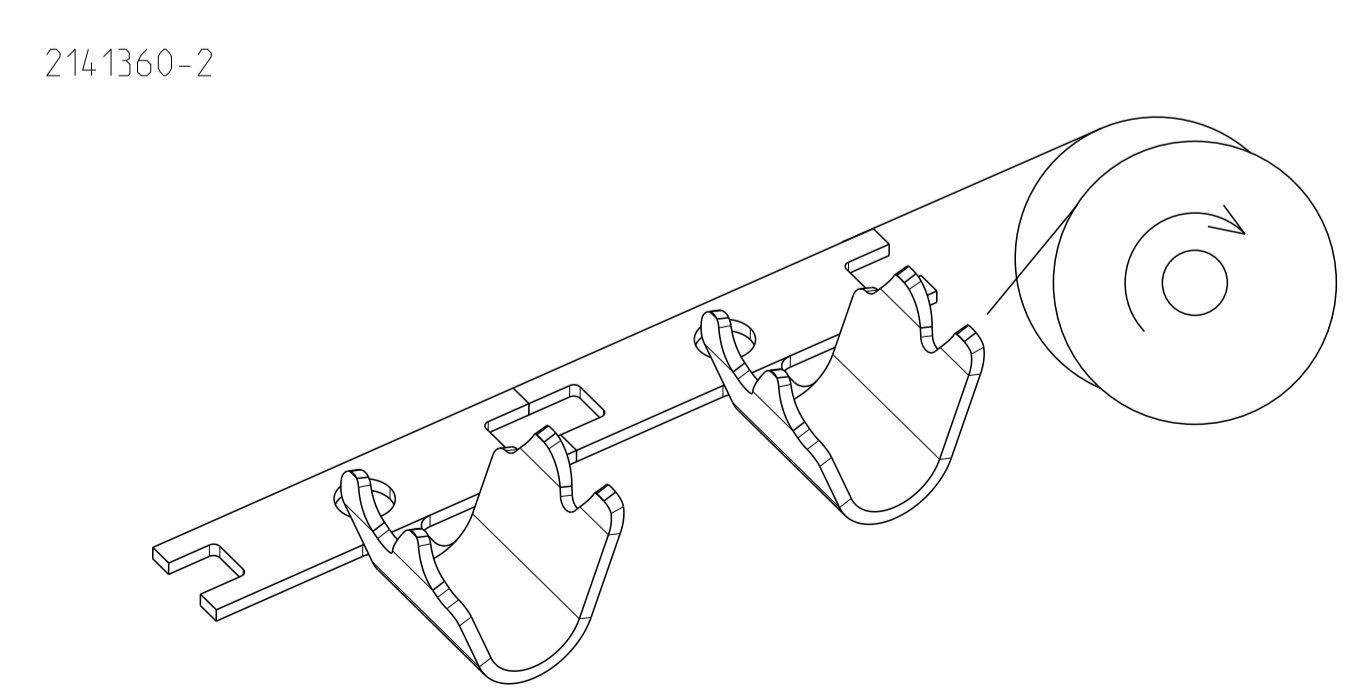
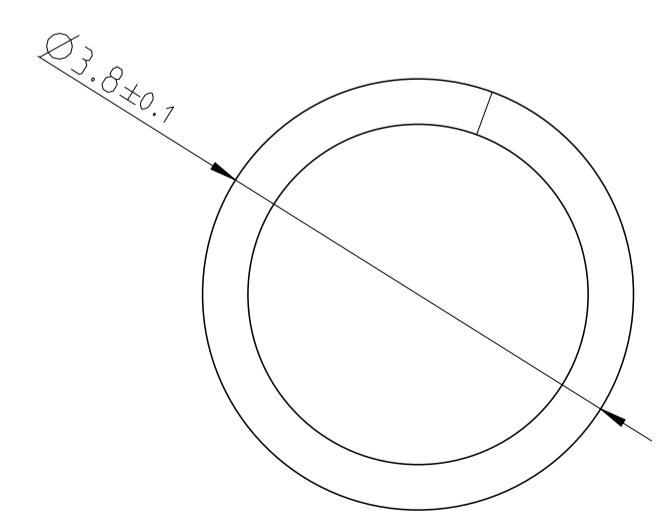
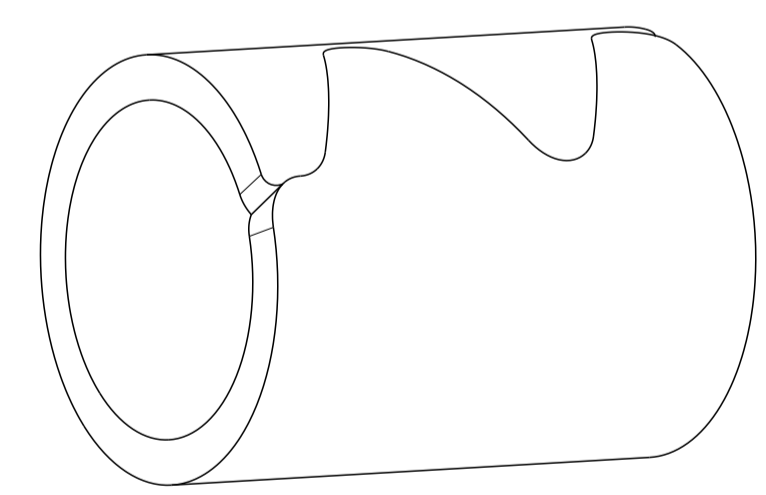


LOC	DIST	REVISIONS			
		REV	DATE	BY	APPV
A1	-	A1	22OCT2013	FF	OF
		A2	22JUL2016	SCK	JP
		A3	20DEC2016	GH	JP
		A4	30JUL2019	JPN	JP



FOR INFORMATION ONLY!  
 VIEW OF BENDED PART  
 Nur zur Information!  
 Ansicht des gebogenen Teils



1 PACKAGING: ON REEL  
 Verpackung: Spulenware

USED ON	TE-PN	REV.	MATERIAL	DESCRIPTION	FINISH
-	2141360-3	A	CuSn4	SHIELD, BARREL	PRE-TINNED
-	2141360-2	A	CuSn4	SHIELD, BARREL	PRE-TINNED

THIS DRAWING IS A CONTROLLED DOCUMENT. **TE Connectivity**

DIMENSIONS: mm	TOLERANCES UNLESS OTHERWISE SPECIFIED:	0 PLC ±0.1	1 PLC ±0.1	2 PLC ±0.1	3 PLC ±0.1	4 PLC ±0.1	ANGLES ±°	FINISH
MATERIAL	FINISH	WEIGHT	SIZE	CAGE CODE	DRAWING NO	RESTRICTED TO	CUSTOMER DRAWING	

DWN: L. Nguyen 29AUG2012  
 CHK: D. Fuchs 30AUG2012  
 APVD: U. Gaseauer  
 NAME: SHIELD, SHELL, BARREL Schirmhülse  
 PRODUCT SPEC: -  
 APPLICATION SPEC: -  
 SIZE: A1  
 CAGE CODE: 00779  
 DRAWING NO: 2141360  
 SCALE: 5:1  
 SHEET: 1 of 1  
 REV: A4