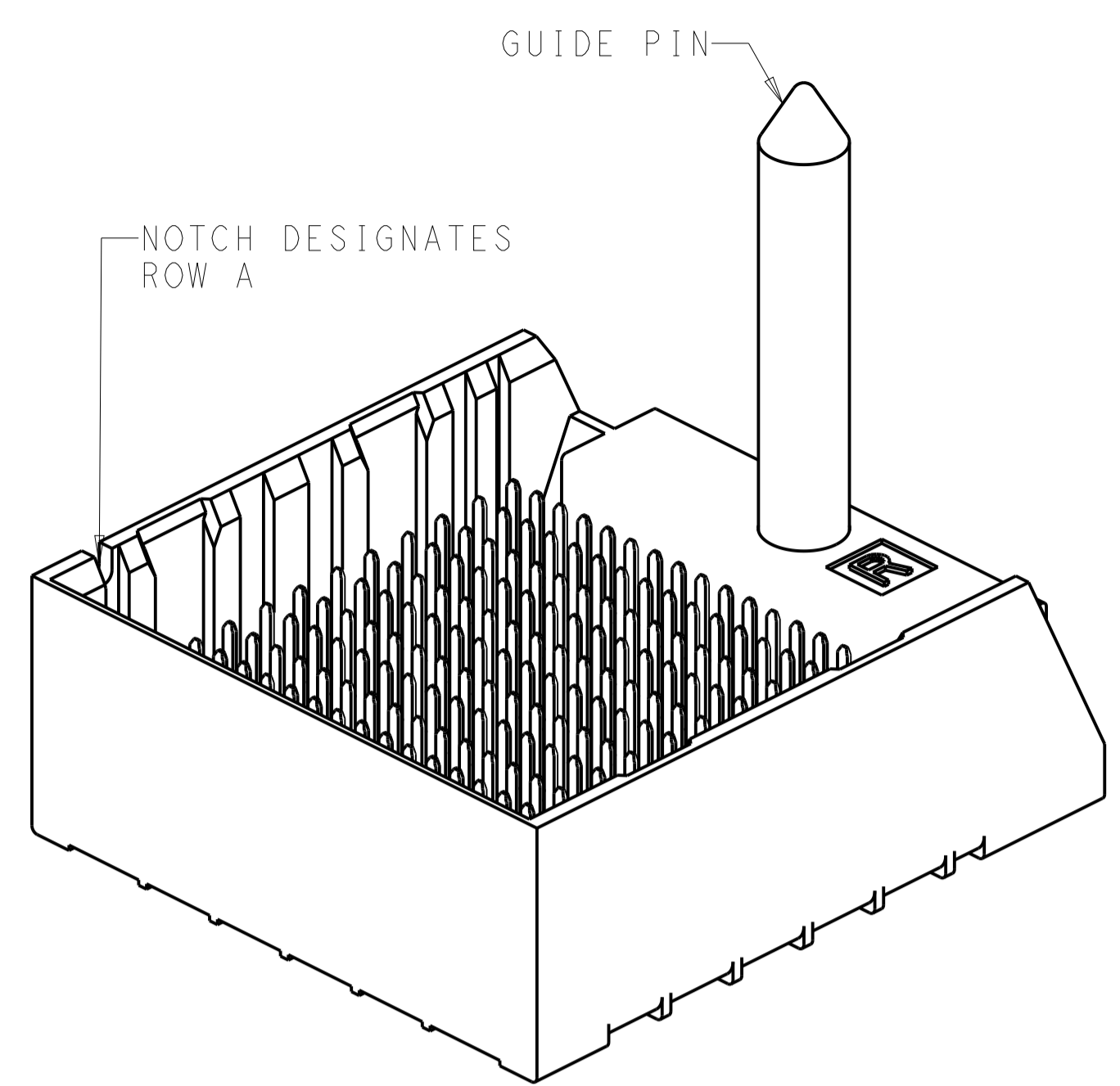
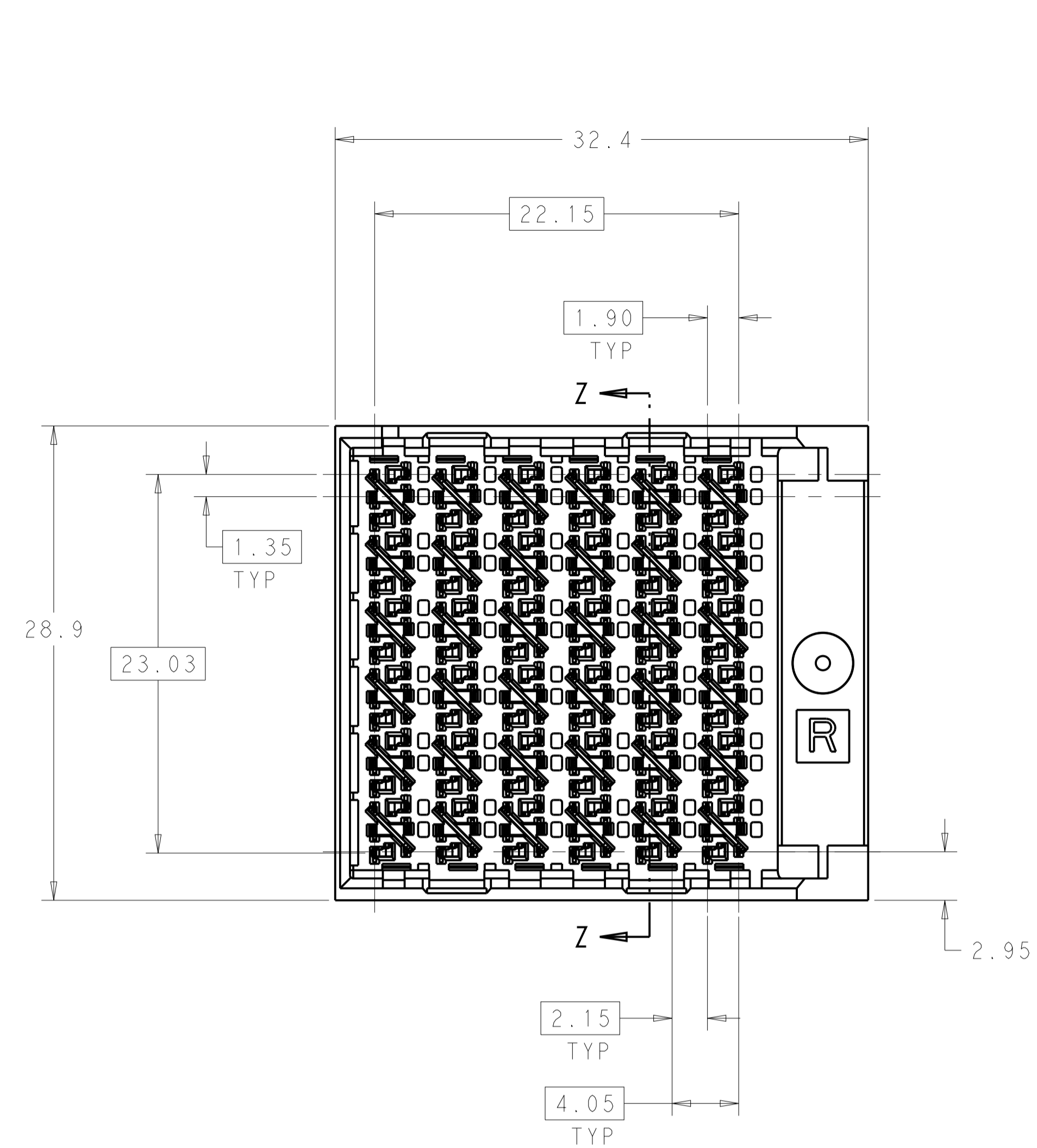
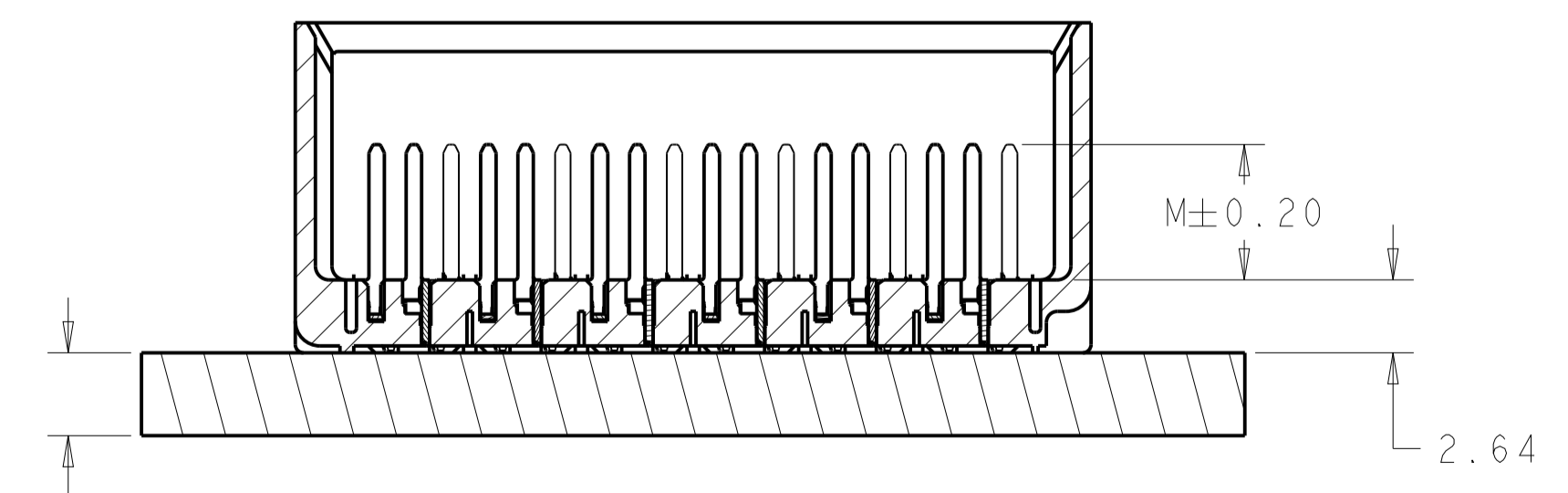
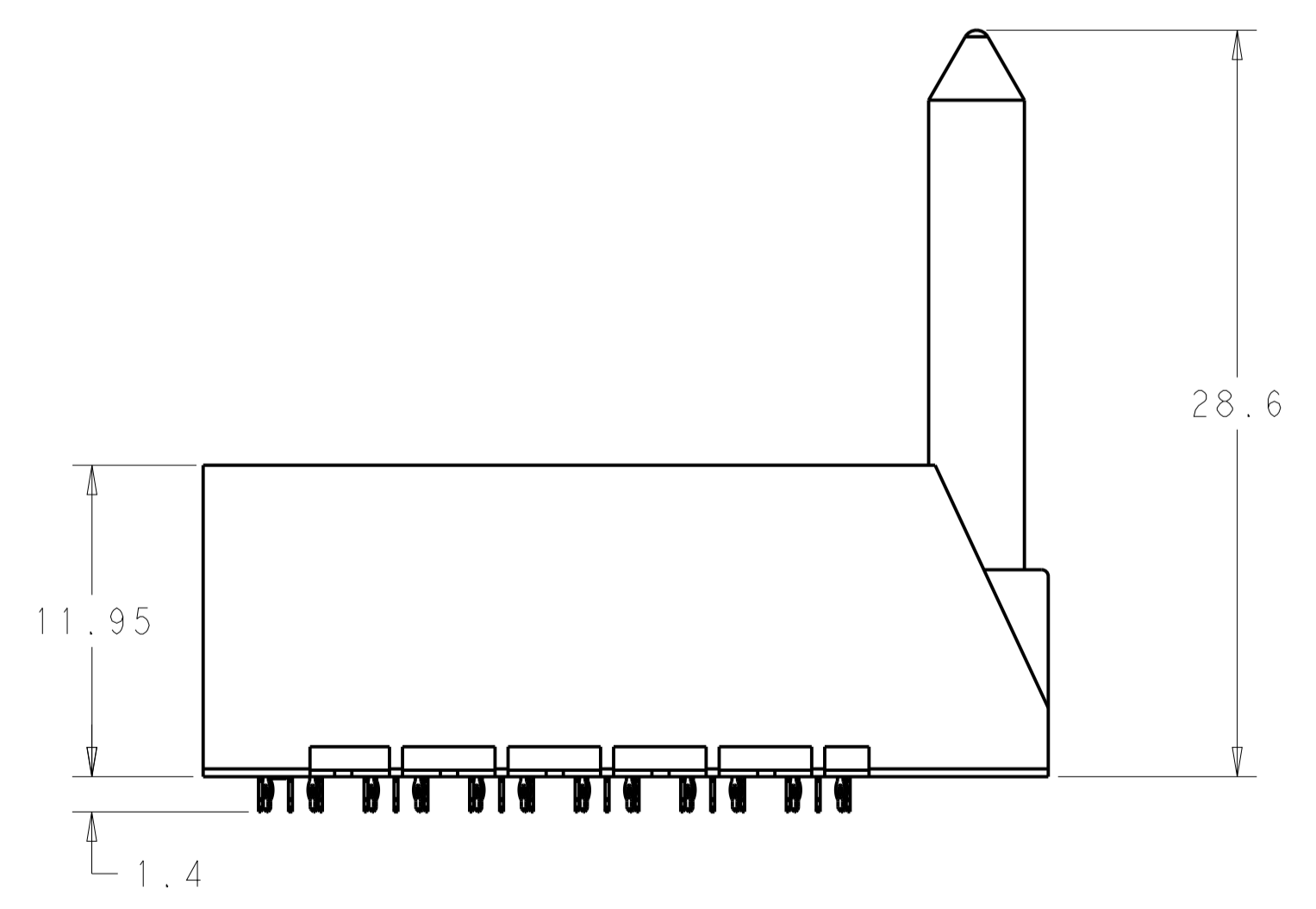
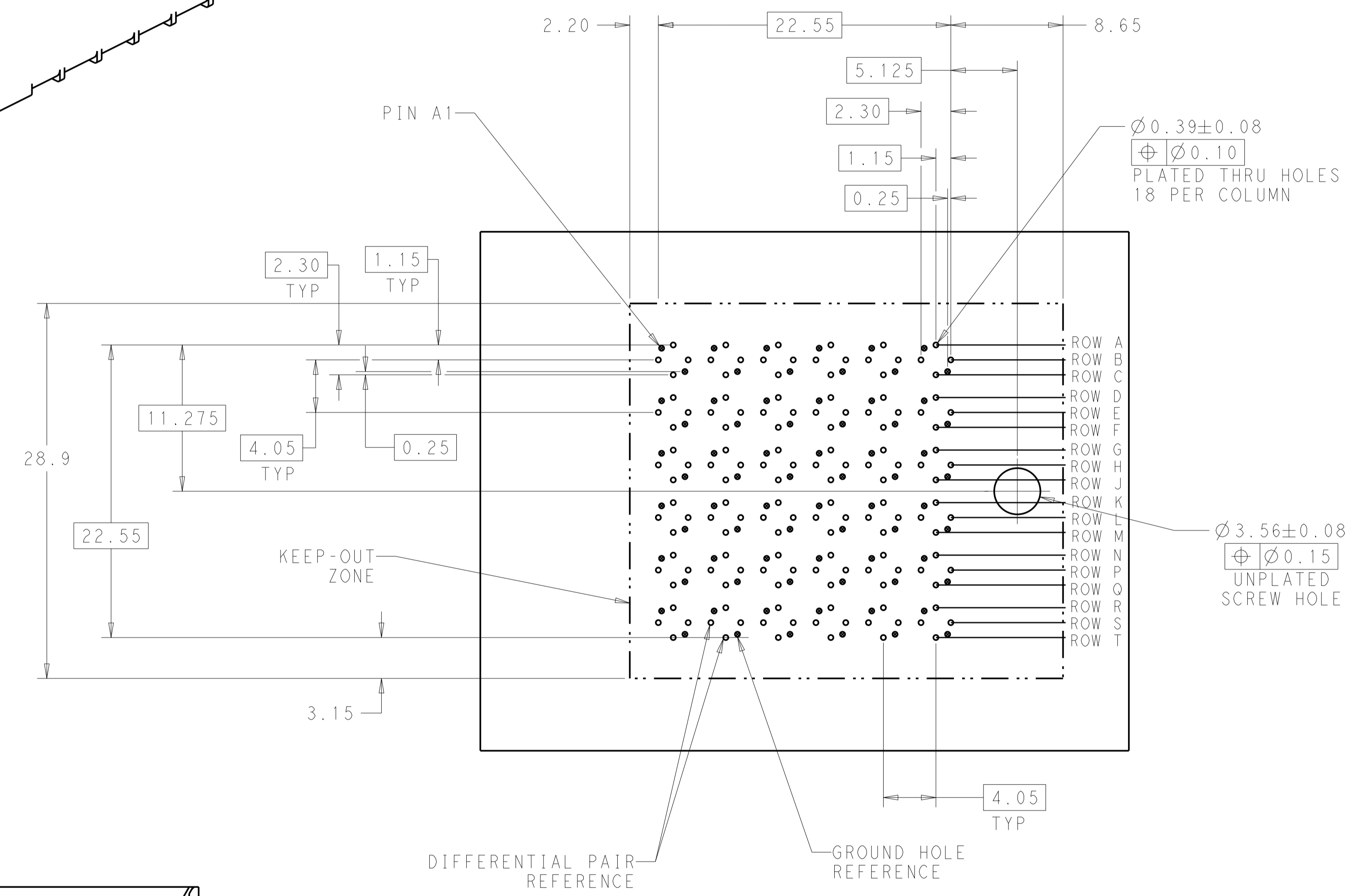


REVISIONS				
P.	LTN.	DESCRIPTION	DATE	APVD.
C		REVISED PER ECO-14-013273	04NOV2014	AP DD



- 1 MATERIAL:  
HOUSING: LCP GLASS FILLED UL94V-0  
TERMINALS: HIGH PERFORMANCE COPPER ALLOY
- 2 FINISH:  
30μ" MIN GOLD IN CONTACT AREA  
SELECTIVE TIN ON PCB TAILS.  
NICKEL OVERALL.
- 3. SCREWS PACKAGED IN END OF PACKAGING TUBE



3.00 MIN BOARD THICKNESS

2	5.5	2143268-2
2	4.9	2143268-1
FINISH	DIM M	PART NUMBER

THIS DRAWING IS A CONTROLLED DOCUMENT. DIMENSIONS: mm. TOLERANCES UNLESS OTHERWISE SPECIFIED: 0 PLC ±, 1 PLC ±0.25, 2 PLC ±0.13, 3 PLC ±, 4 PLC ±, ANGLES ±0.

OWN: J. K. SHOBER 29DEC2010, CH: J. EARY 29DEC2010, APVD: J. EARY 29DEC2010. NAME: IMPACT, 6 PAIR, 12 COLUMN, RIGHT GUIDED LEFT END WALL ASSEMBLY, ORTHOGONAL, 0.39 PTH. SIZE: A1, CAGE CODE: 2143268, DRAWING NO: 100779, CUSTOMER DRAWING. SCALE: 4:1, SHEET 1 OF 1, REV C.

STE TE Connectivity