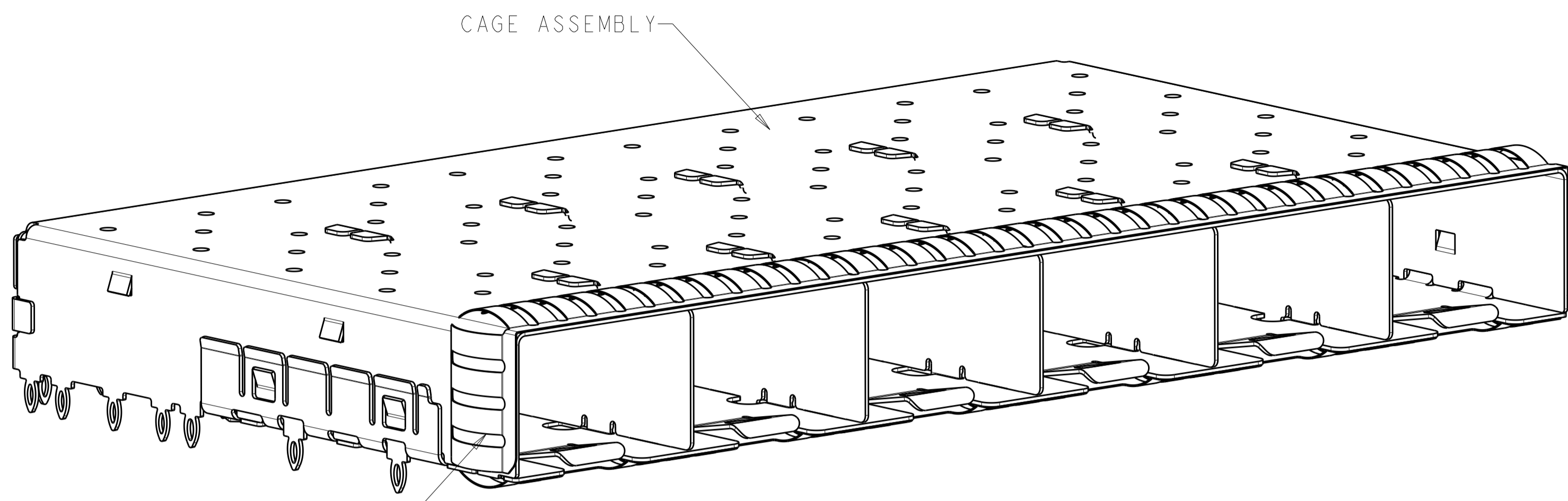
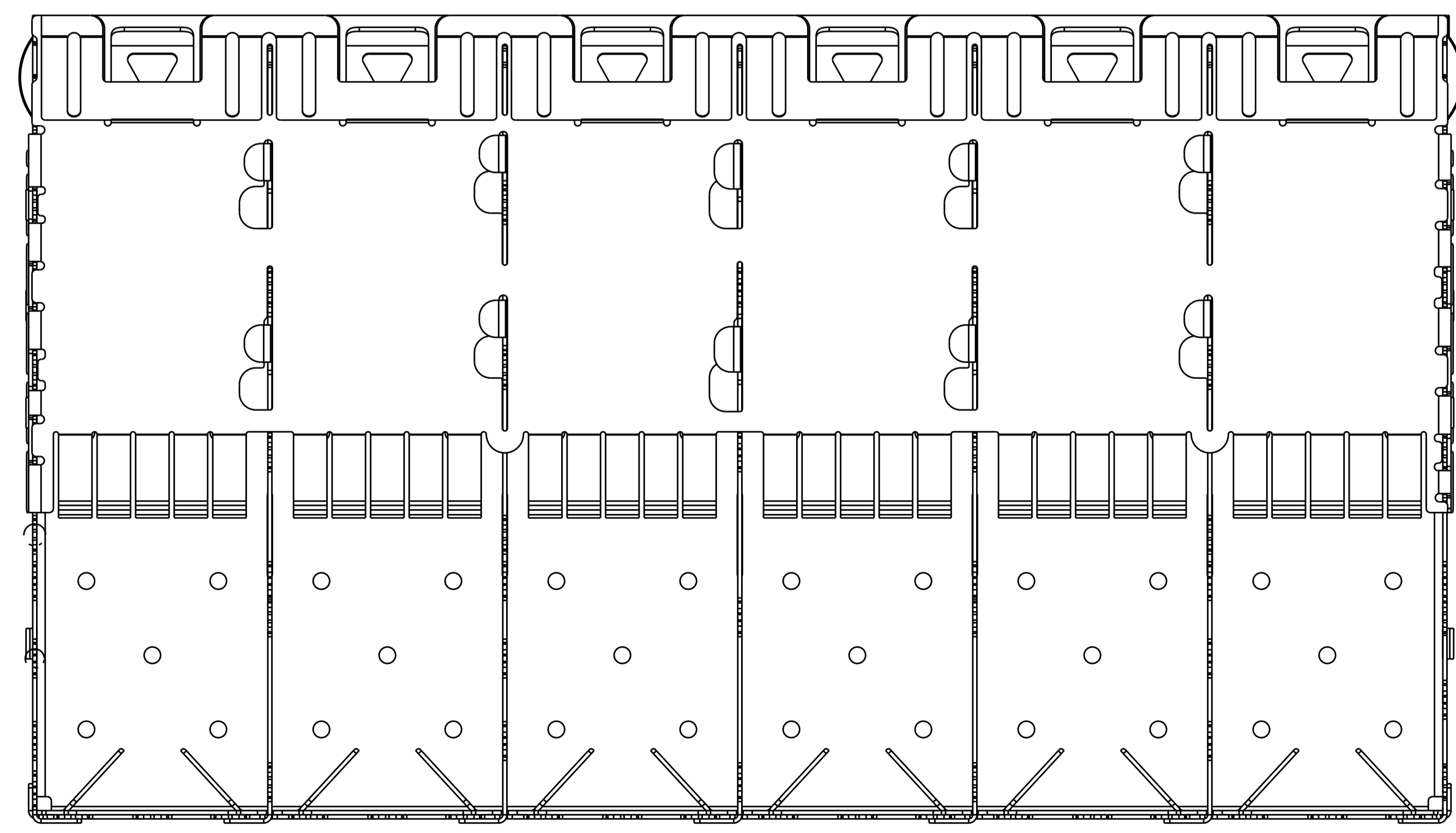
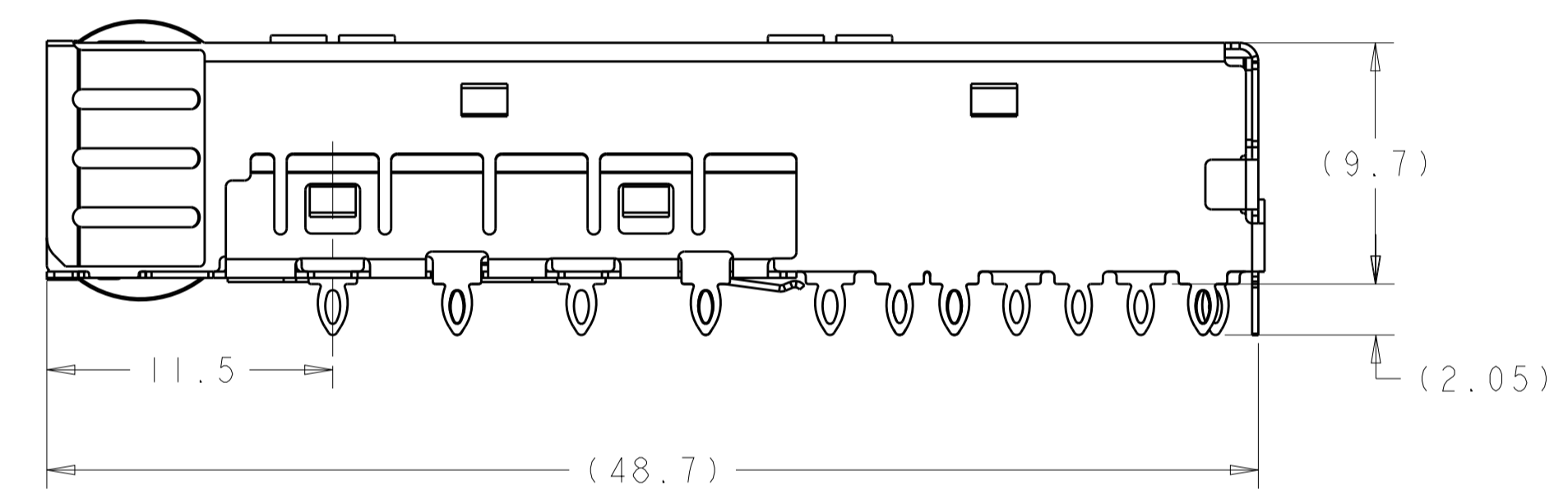
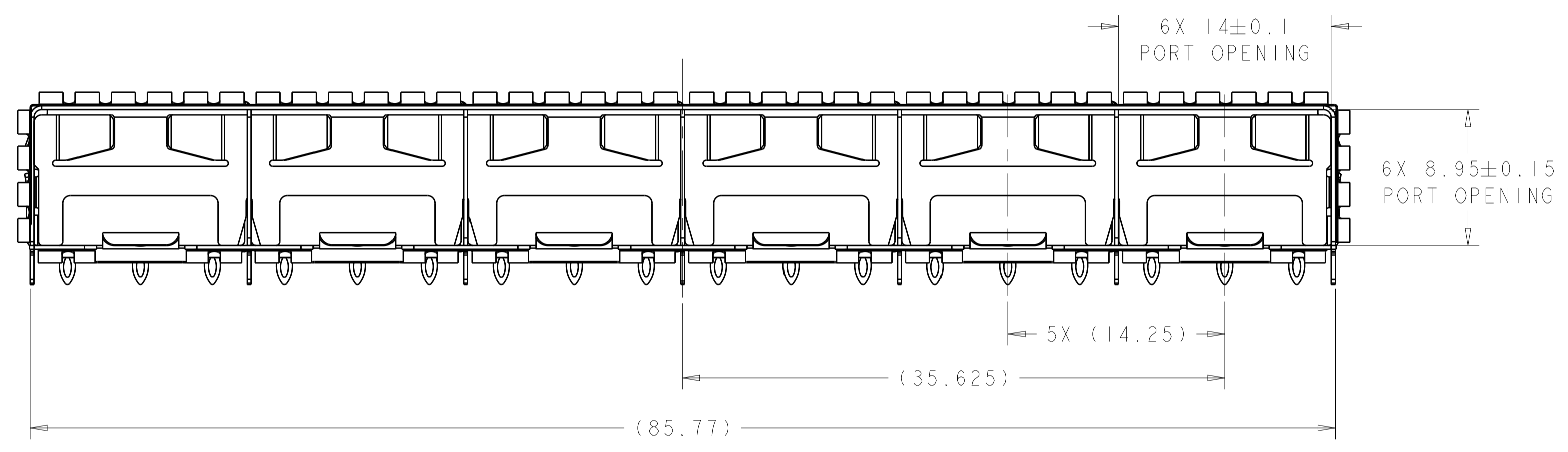


LOC		DIST		REVISONS			
P	LTN	DESCRIPTION	DATE	DWN	APVD		
A		INITIAL RELEASE	10AUG2015	JW	SH		



CAGE ASSEMBLY
 EMI SPRINGS
 2170272-1
 SFP+ ENHANCED 1X6 CAGE ASSEMBLY

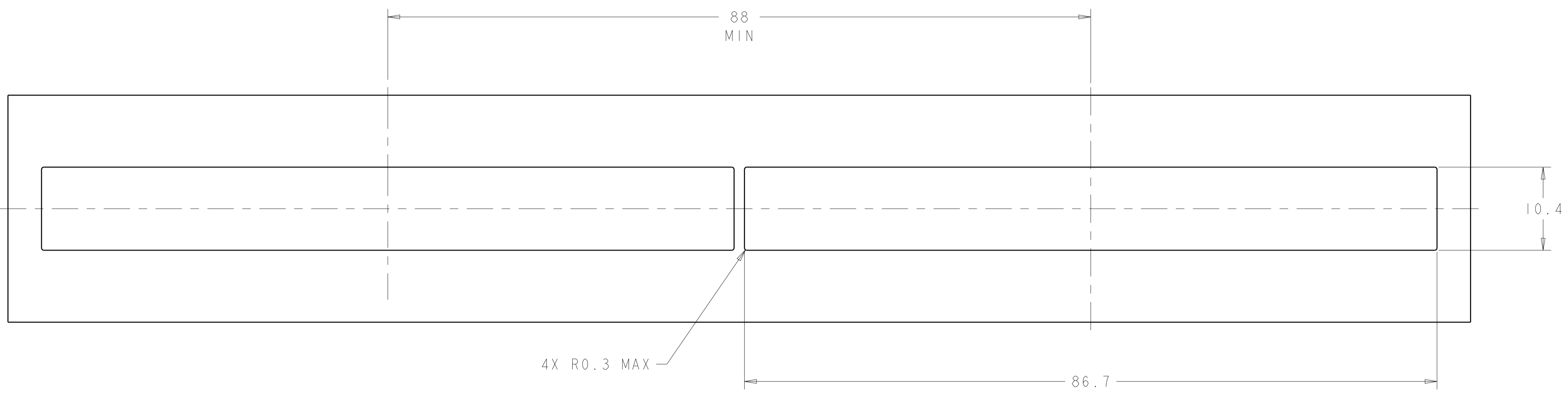
- ⚠ MATERIAL:
 CAGE ASSEMBLY: 0.25mm THICK NICKEL-SILVER ALLOY.
 EMI SPRINGS: COPPER ALLOY.
- ⚠ DATUM AND BASIC DIMENSION ESTABLISHED BY CUSTOMER.
- 3. MATES WITH SFP MSA COMPLIANT TRANSCEIVERS.
- ⚠ PADS AND VIAS CHASSIS GROUND.
- 5. INTERPRETATION OF DATUM REFERENCE FRAME IN ACCORDANCE WITH SECT 4.4.1.1 OF ASME Y14.5M-1994.
- ⚠ MINIMUM PC BOARD THICKNESS:
 SINGLE SIDED = 1.50mm
- ⚠ HOLE PATTERN REPEATS FOR EACH PORT. SPACING BETWEEN PORTS IS 14.25mm.
- ⚠ REFERENCE APPLICATION SPEC. 114-13120, HOLE A, FOR RECOMMENDED DRILL HOLE DIAMETER AND PLATING THICKNESS.
- ⚠ REFERENCE APPLICATION SPEC. 114-13120, HOLE B, FOR RECOMMENDED DRILL HOLE DIAMETER AND PLATING THICKNESS.
- 10. PRODUCT HAS NOT PASSED QUALIFICATION TESTING.
- 11. PRODUCT COMPLIES WITH SPECIFICATION SFF-8433 IMPROVED PLUGGABLE FORM FACTOR FOR SFP+ GANGED CAGES.



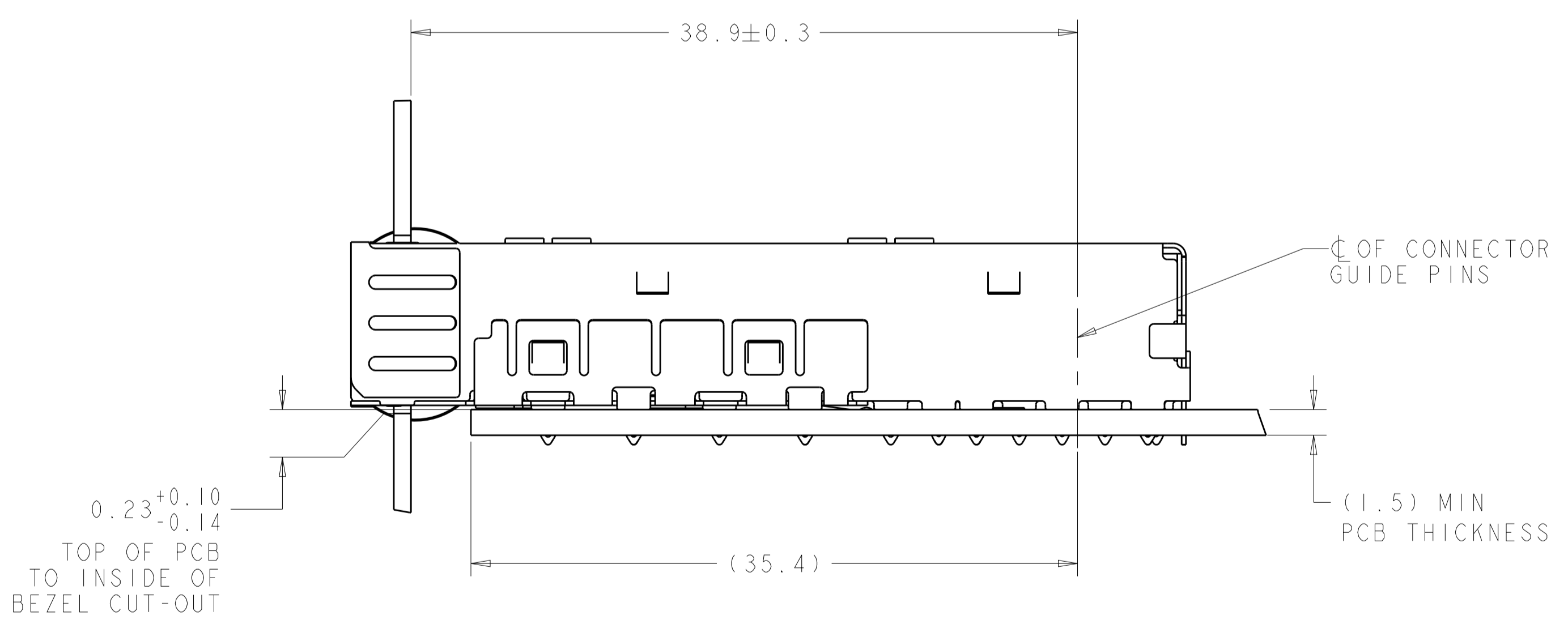
2170272-1
 PART NUMBER

THIS DRAWING IS A CONTROLLED DOCUMENT.		DWN: JASON YANG 03FEB2012	TE Connectivity	
DIMENSIONS: mm		CHK: ALEX CAI 03FEB2012		
TOLERANCES UNLESS OTHERWISE SPECIFIED:		APVD: ALEX CAI 03FEB2012	NAME: SFP+ ENHANCED 1X6 CAGE ASSEMBLY MORE EMI PINS, PRESS-FIT	
0 PLC	±0.2	PRODUCT SPEC	SIZE: CAGE CODE DRAWING NO. RESTRICTED TO	
1 PLC	±0.15	108-2364	A100779C=2170272	
2 PLC	±0.15	APPLICATION SPEC	SCALE: 1:1 SHEET 1 OF 3 REV A	
3 PLC	±	114-13120	Customer Drawing	
4 PLC	±	WEIGHT		
ANGLES	±			
MATERIAL	FINISH			

LOC	DIST	REVISIONS			
P	LTN	DESCRIPTION	DATE	DMN	APVD
GP	00	SEE SHEET 1	-	-	-



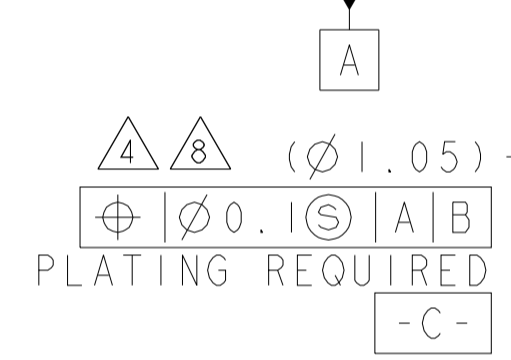
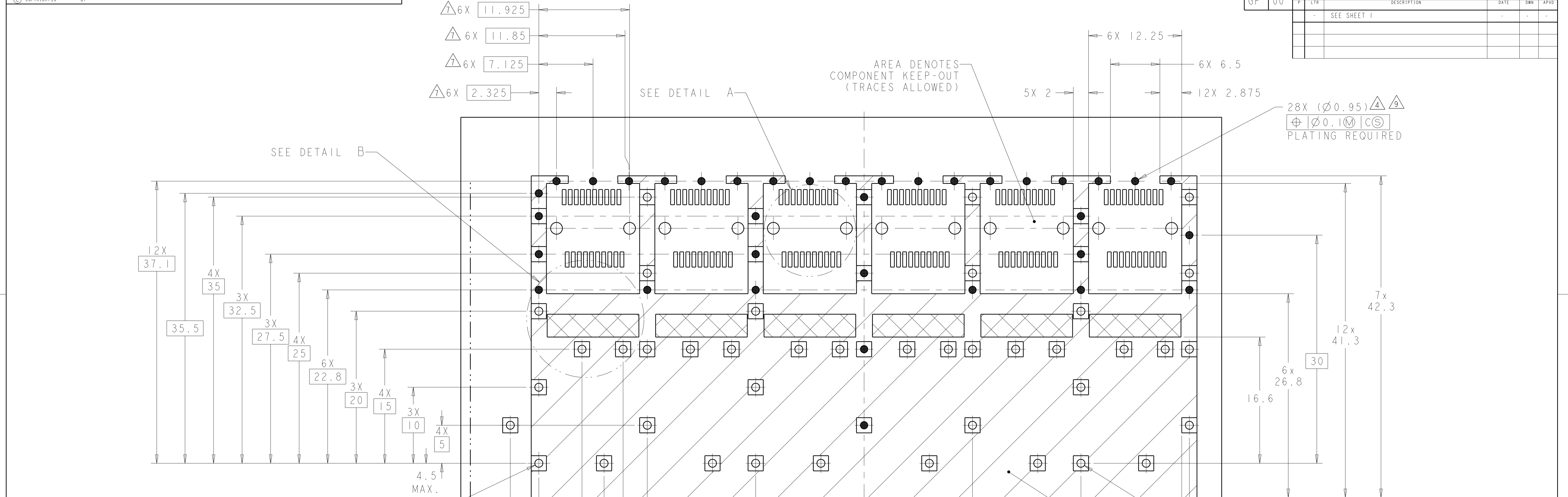
RECOMMENDED BEZEL CUT-OUT
 SINGLE SIDED APPLICATIONS
 BEZEL TOLERANCE = ±0.10
 SCALE 3:1



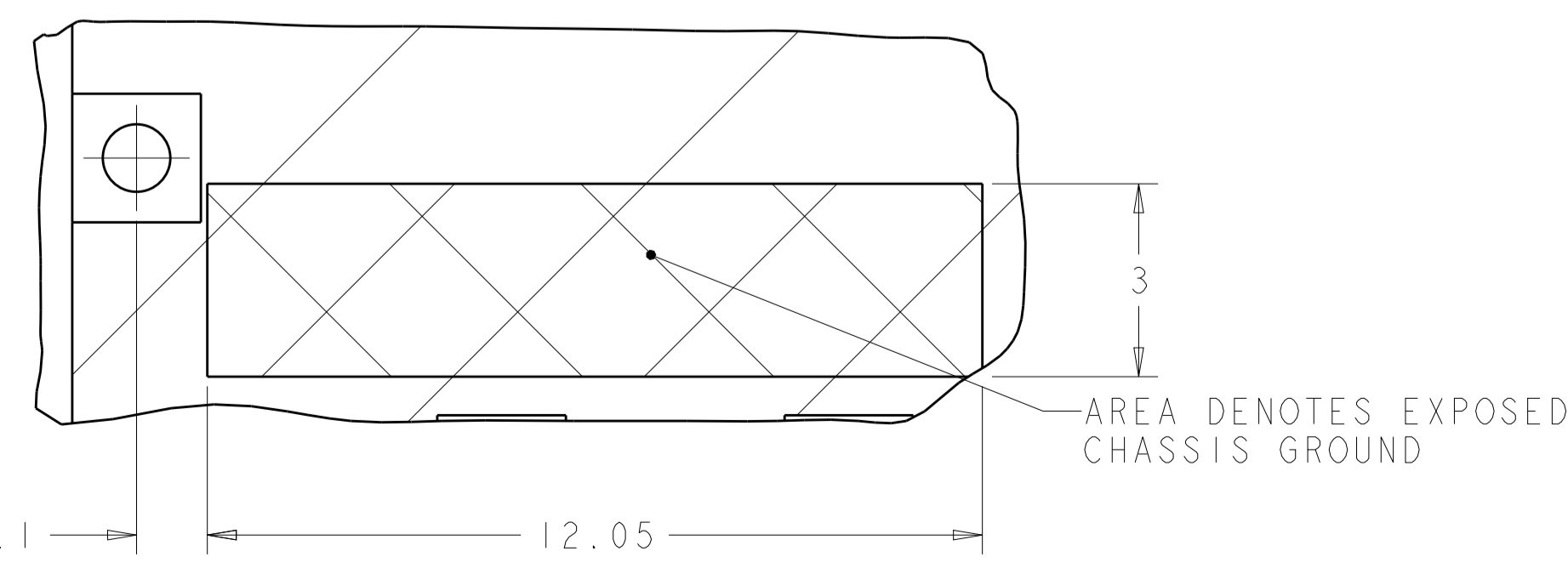
2170272-1
 MOUNTED ON PC BOARD
 SHOWN THRU RECOMMENDED BEZEL

THIS DRAWING IS A CONTROLLED DOCUMENT.		DMN: JASON YANG 03FEB2012	TE Connectivity
DIMENSIONS: mm		CHK: ALEX CAI 03FEB2012	
TOLERANCES UNLESS OTHERWISE SPECIFIED:		APVD: ALEX CAI 03FEB2012	NAME: SFP+ ENHANCED 1X6 CAGE ASSEMBLY MORE EMI PINS, PRESS-FIT
0 PLC ±0.2	1 PLC ±0.15	PRODUCT SPEC: 108-2364	SIZE: A100779
2 PLC ±0.15	3 PLC ±0.15	APPLICATION SPEC: 114-13120	CAGE CODE: C=2170272
4 PLC ±0.15	ANGLES ±0.1	WEIGHT: -	RESTRICTED TO: -
MATERIAL: -	FINISH: -	Customer Drawing	SCALE: 1:1 SHEET 2 OF 3 REV A

LOC	DIST	REVISIONS					
GP	00	P	LTN	DESCRIPTION	DATE	DWN	APVD
		-	-	SEE SHEET 1	-	-	-



RECOMMENDED PT CONNECTOR LAYOUT
DETAIL A
SCALE 10:1



DETAIL B
SCALE 10:1

RECOMMENDED PCB CONFIGURATION
WITH KEEP-OUT AREAS
SINGLE SIDED APPLICATIONS
PCB TOLERANCE ±0.05
SCALE 4:1

THIS DRAWING IS A CONTROLLED DOCUMENT.		DWN: JASION YANG 03FEB2012	 TE Connectivity
DIMENSIONS: mm		CHK: ALEX CAI 03FEB2012	
TOLERANCES UNLESS OTHERWISE SPECIFIED:		APVD: ALEX CAI 03FEB2012	NAME: SFP+ ENHANCED 1X6 CAGE ASSEMBLY MORE EMI PINS, PRESS-FIT
0 PLC ±0.2		PRODUCT SPEC: 108-2364	
1 PLC ±0.15		APPLICATION SPEC: 114-13120	SIZE: A100779C=2170272 SCALE: 2:1 SHEET 3 OF 3 REV A
2 PLC ±0.15		WEIGHT: -	
3 PLC ±0.15		MATERIAL: -	
4 PLC ±0.15		FINISH: -	
ANGLES ±		Customer Drawing	