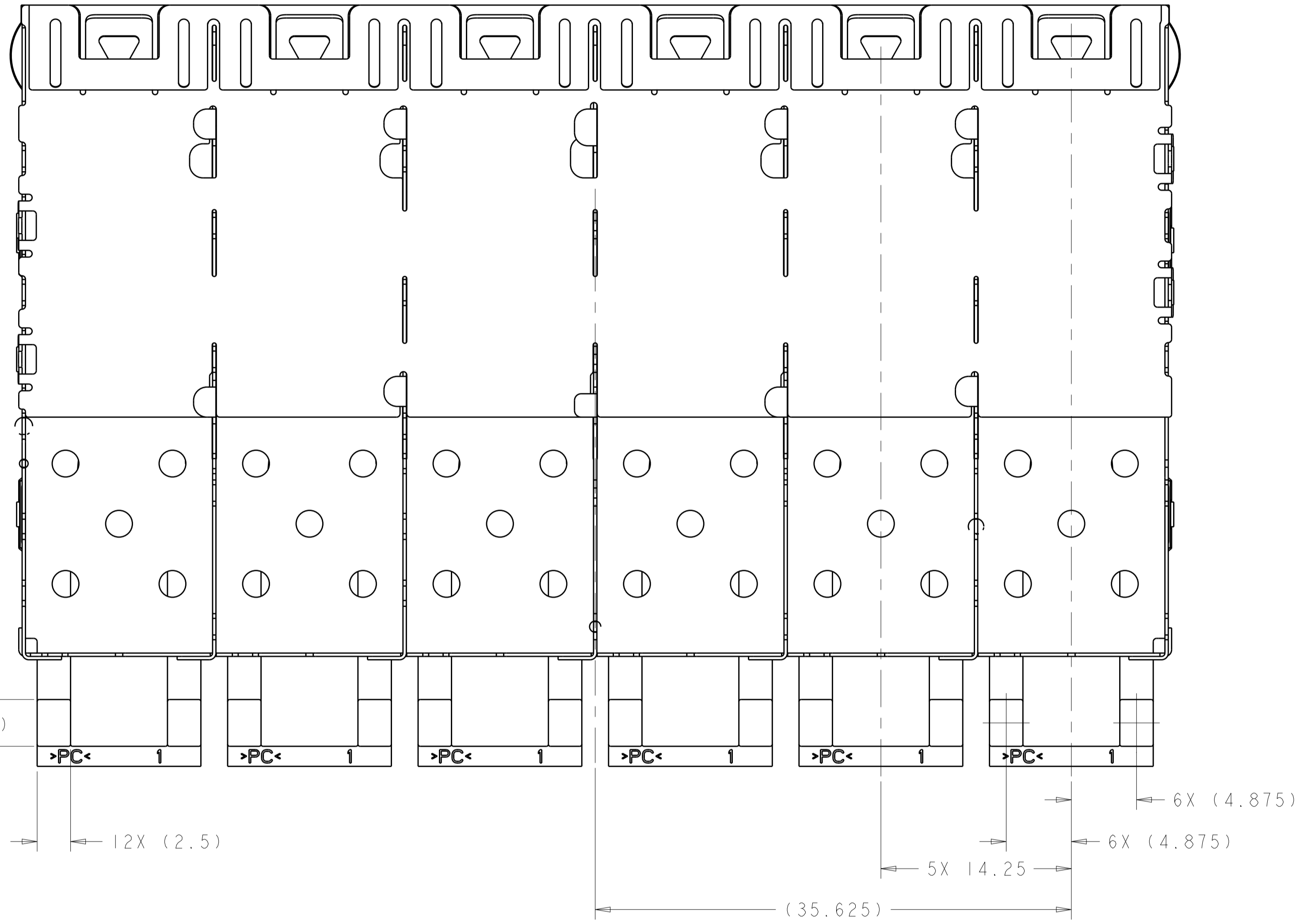
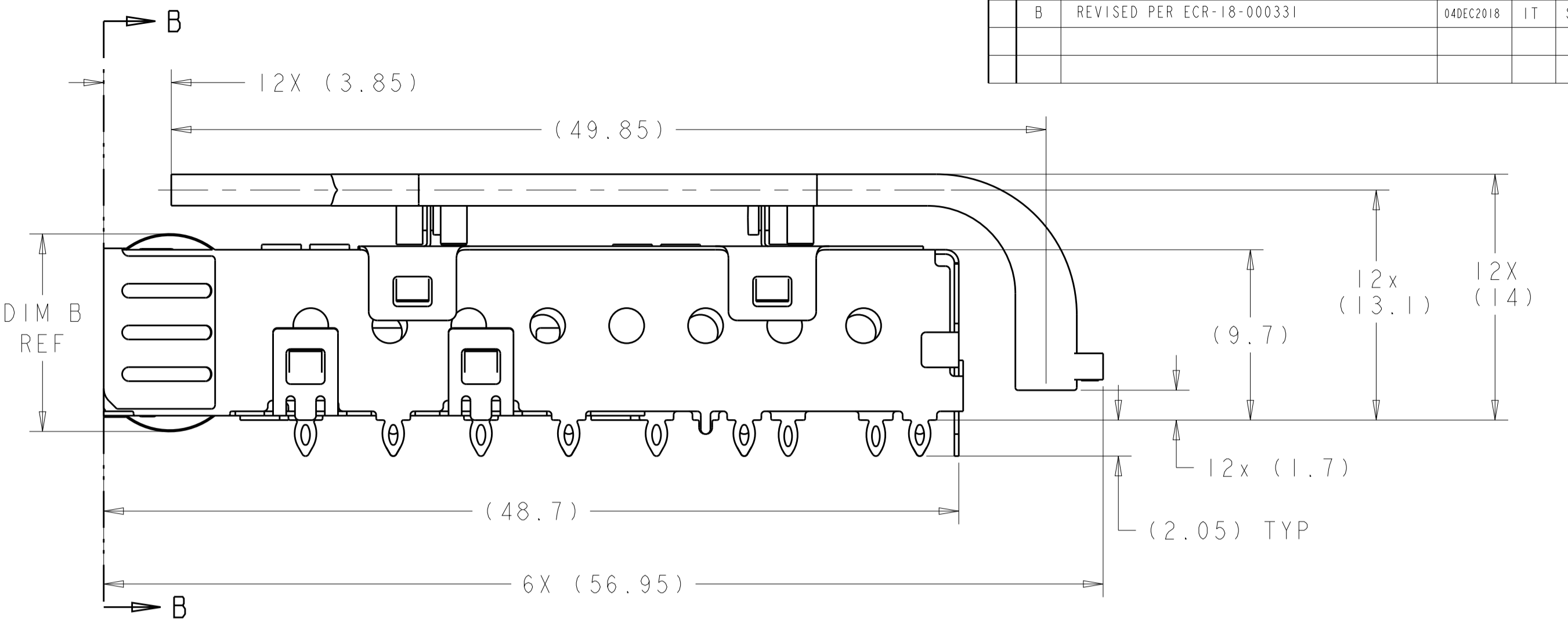
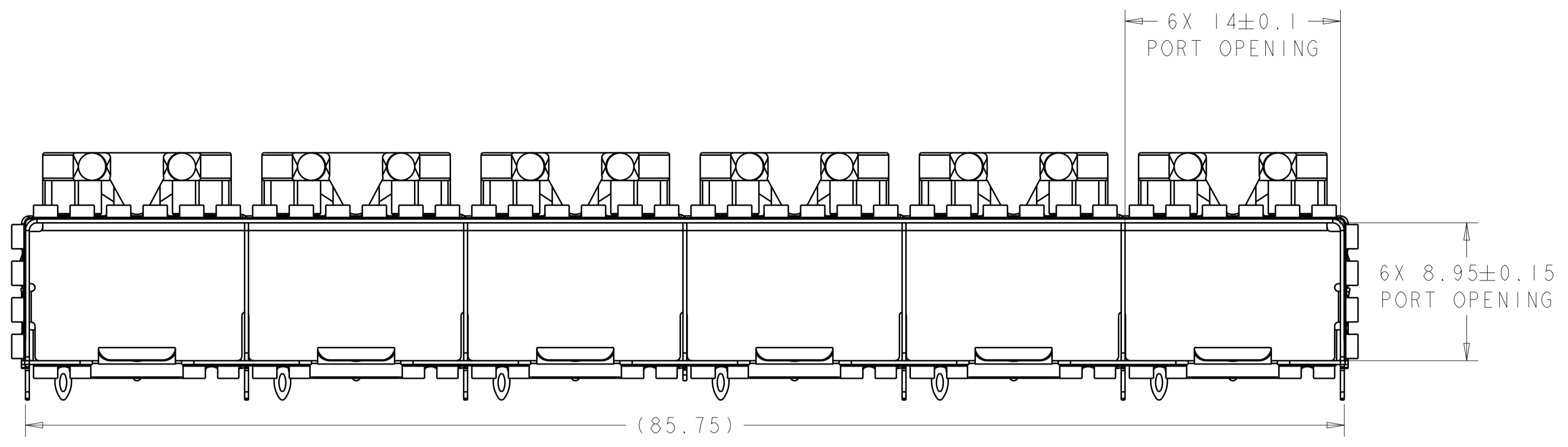
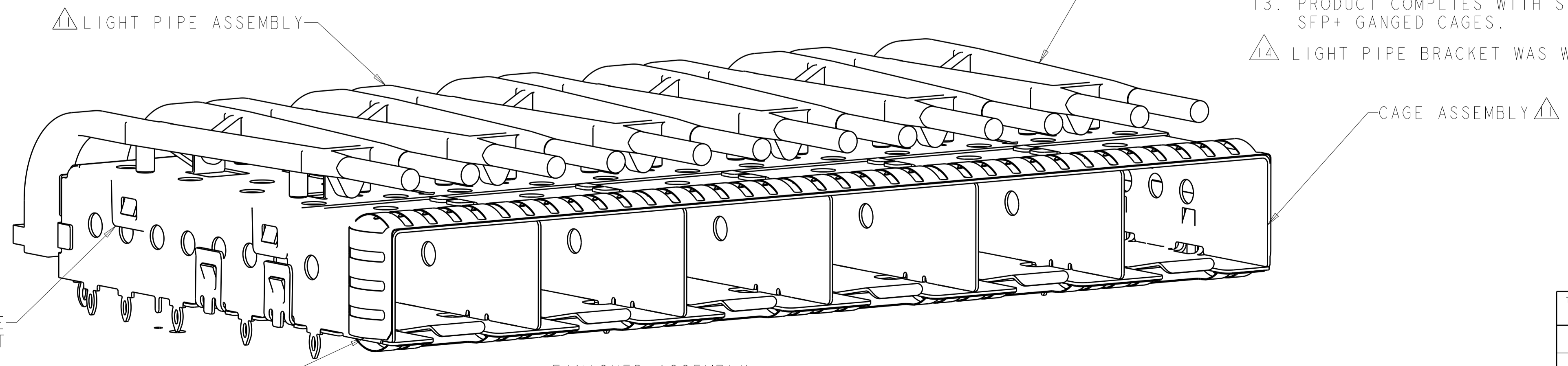


LOC	DIST	REVISIONS					
		P	LTN	DESCRIPTION	DATE	DMN	APVD
GP	00	A		PRODUCTION RELEASE	01MAR2016	JW	SH
		B		REVISED PER ECR-18-000331	04DEC2018	IT	SH



- 1. MATERIAL:  
CAGE ASSEMBLY: 0.25mm THICK NICKEL SILVER ALLOY.  
LIGHT PIPE CLIP: STAINLESS STEEL  
LIGHT PIPE: POLYCARBONATE, CLEAR, UL-94V-0 RATED
- 2. FINISH:  
SPRINGS: MINIMUM OF 0.8um TIN PLATE OVER A MINIMUM OF 0.8um NICKEL UNDERPLATE.  
NON-PLATED EDGES PERMISSIBLE.
- 3. MATES WITH SFP MSA COMPLIANT TRANSCEIVERS.
- 4. PADS AND VIAS CHASSIS GROUND.
- 5. INTERPRETATION OF DATUM REFERENCE FRAME IN ACCORDANCE WITH SECT 4.4.1.1 OF ASME Y14.5M-1994.
- 6. MINIMUM PCB BOARD THICKNESS:  
SINGLE SIDED = 1.50  
DOUBLE SIDED = 2.25
- 7. HOLE PATTERN REPEATS FOR EACH PORT. SPACING BETWEEN PORTS IS 14.25mm.
- 8. DATUM AND BASIC DIMENSION ESTABLISHED BY CUSTOMER.
- 9. REFERENCE APPLICATION SPEC. 114-13120, HOLE A, FOR RECOMMENDED DRILL HOLE DIAMETER AND PLATING THICKNESS.
- 10. REFERENCE APPLICATION SPEC. 114-13120, HOLE B, FOR RECOMMENDED DRILL HOLE DIAMETER AND PLATING THICKNESS.
- 11. LIGHT PIPE ASSEMBLY SHIPPED UNASSEMBLED TO CAGE ASSEMBLY. CAGE ASSEMBLY TO BE PRESSED INTO THE PCB PRIOR TO ATTACHING THE LIGHT PIPE ASSEMBLY TO THE CAGE.
- 12. CERTAIN MATING TRANSCEIVERS MAY REQUIRE ADDITIONAL PCB THICKNESS THAT WOULD NEED TO BE DETERMINED BY THE CUSTOMER.
- 13. PRODUCT COMPLIES WITH SPECIFICATION SFF-8433 IMPROVED PLUGGABLE FORM FACTOR FOR SFP+ GANGED CAGES.
- 14. LIGHT PIPE BRACKET WAS WELDED TO CAGE BODY.



FINISHED ASSEMBLY SCALE 4:1

10.85	1.70 MAX	2170509-4
11.25	1.70 MAX	2170509-2
11.25	2.10 MAX	2170509-1
DIM B	DIM A	PART NUMBER

THIS DRAWING IS A CONTROLLED DOCUMENT.

OWN: PETER PAN 30MAY2013  
CHK: SEAN HAN 30MAY2013  
APVD: SEAN HAN 30MAY2013

DIMENSIONS: mm

TOLERANCES UNLESS OTHERWISE SPECIFIED:  
0 PLC ±0.2  
1 PLC ±0.2  
2 PLC ±0.2  
3 PLC ±0.2  
4 PLC ±0.2  
ANGLES ±0.2

MATERIAL: △  
FINISH: △

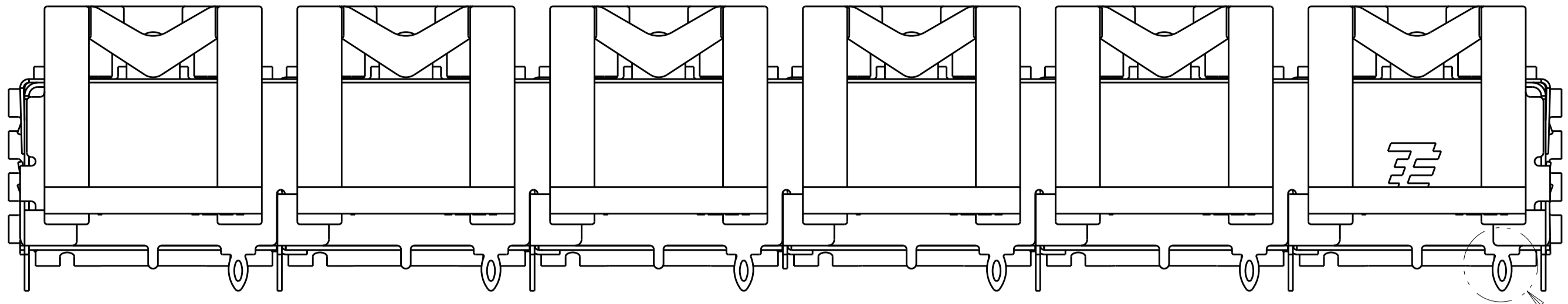
PRODUCT SPEC: 108-2364  
APPLICATION SPEC: 114-13120  
WEIGHT: -  
CUSTOMER DRAWING

NAME: SFP+ 1X6 CAGE ASSEMBLY PRESS FIT, EXTERNAL EMI SPRINGS WITH LIGHT PIPES  
SIZE: A1  
CAGE CODE: 100779  
DRAWING NO: C=2170509  
RESTRICTED TO: -

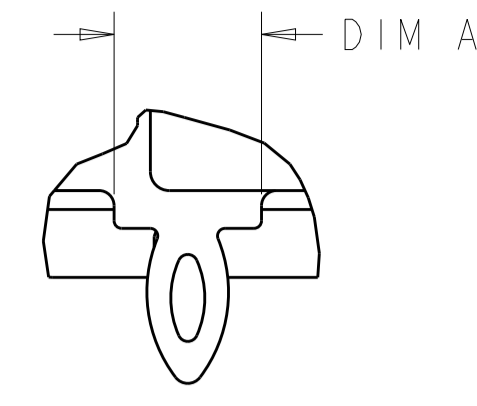
SCALE: 4:1 SHEET 1 OF 4 REV A1

STE TE Connectivity

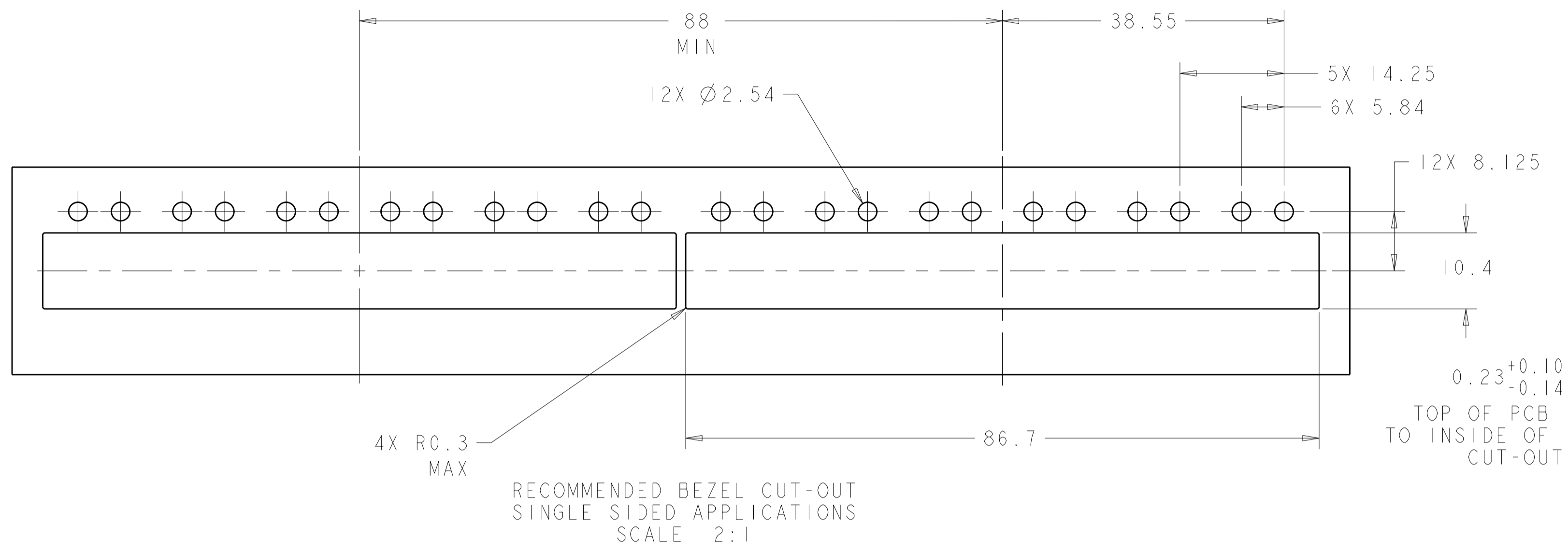
LOC	DIST	REVISIONS			
P	LTH	DESCRIPTION	DATE	DMN	APVD
-	-	SEE SHEET 1	-	-	-



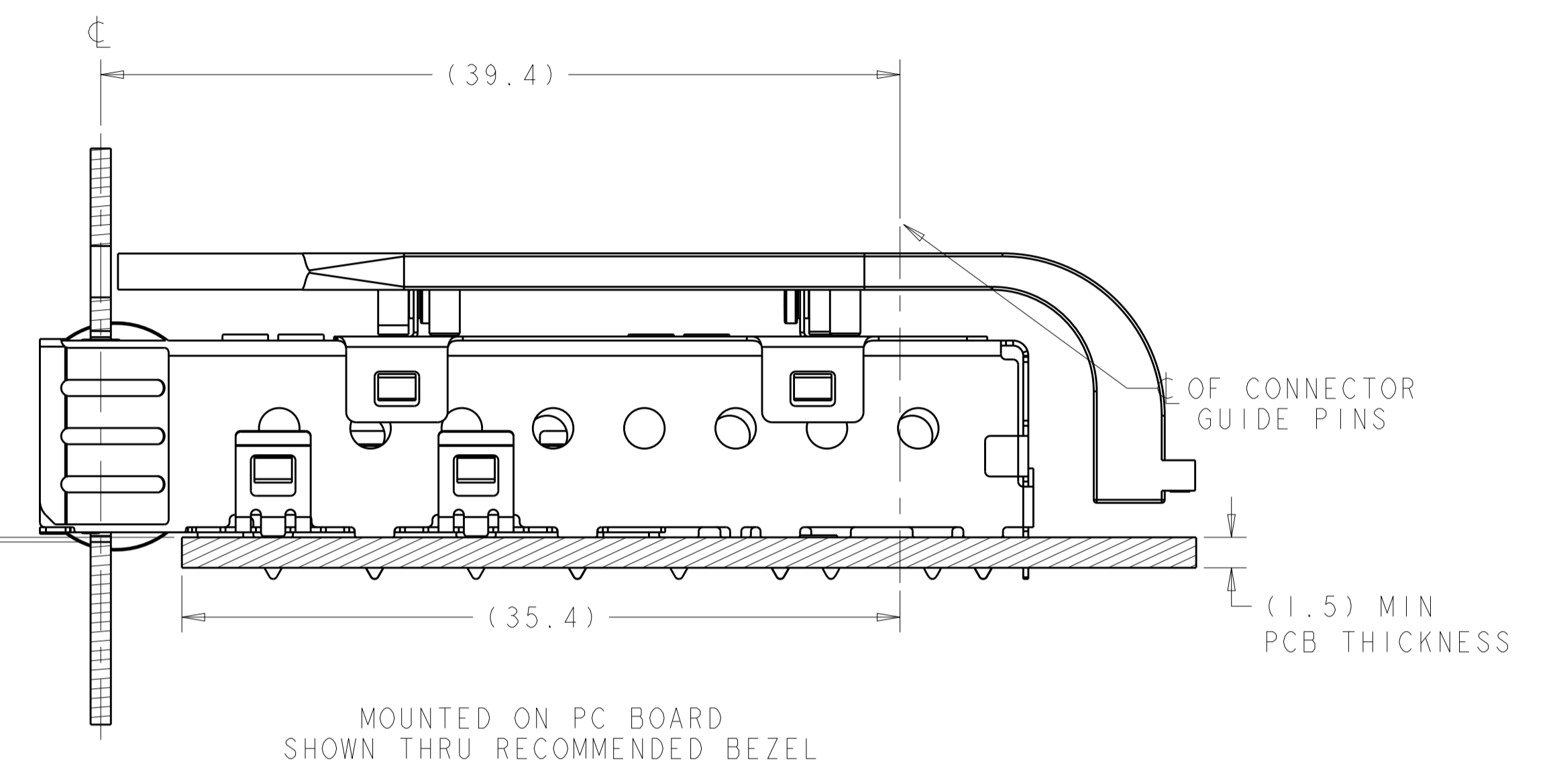
SECTION B-B



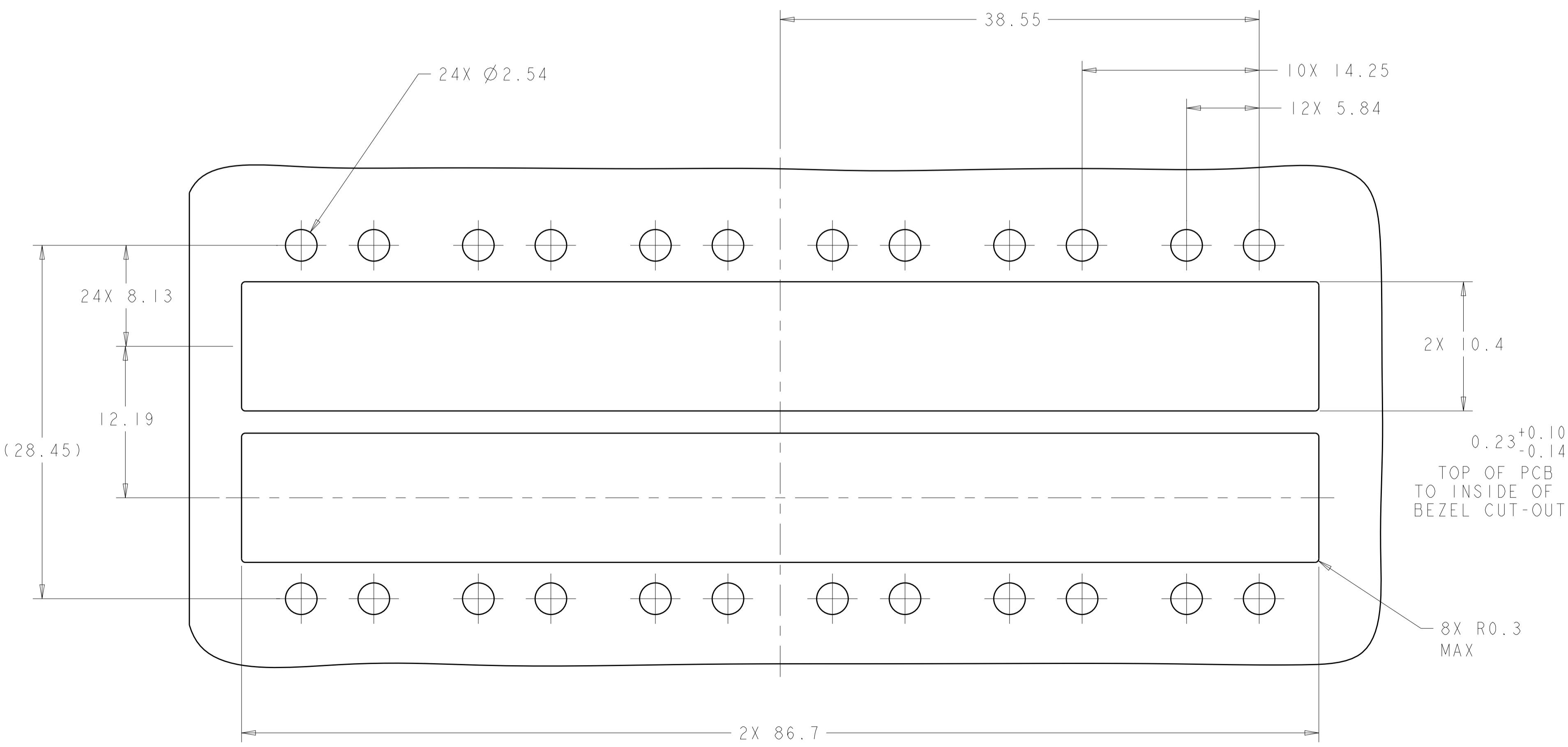
DETAIL A  
SCALE 10:1



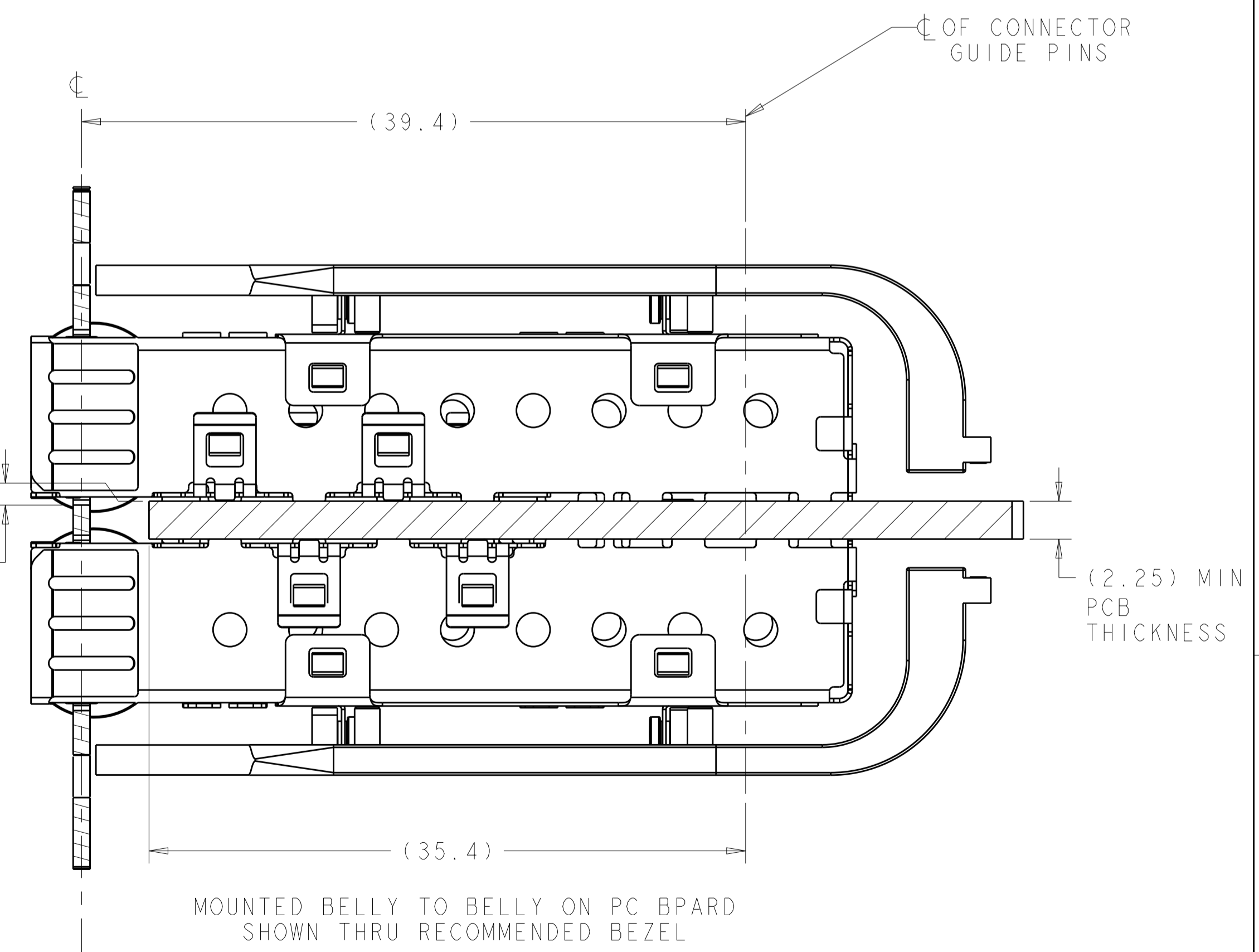
RECOMMENDED BEZEL CUT-OUT  
SINGLE SIDED APPLICATIONS  
SCALE 2:1



MOUNTED ON PC BOARD  
SHOWN THRU RECOMMENDED BEZEL



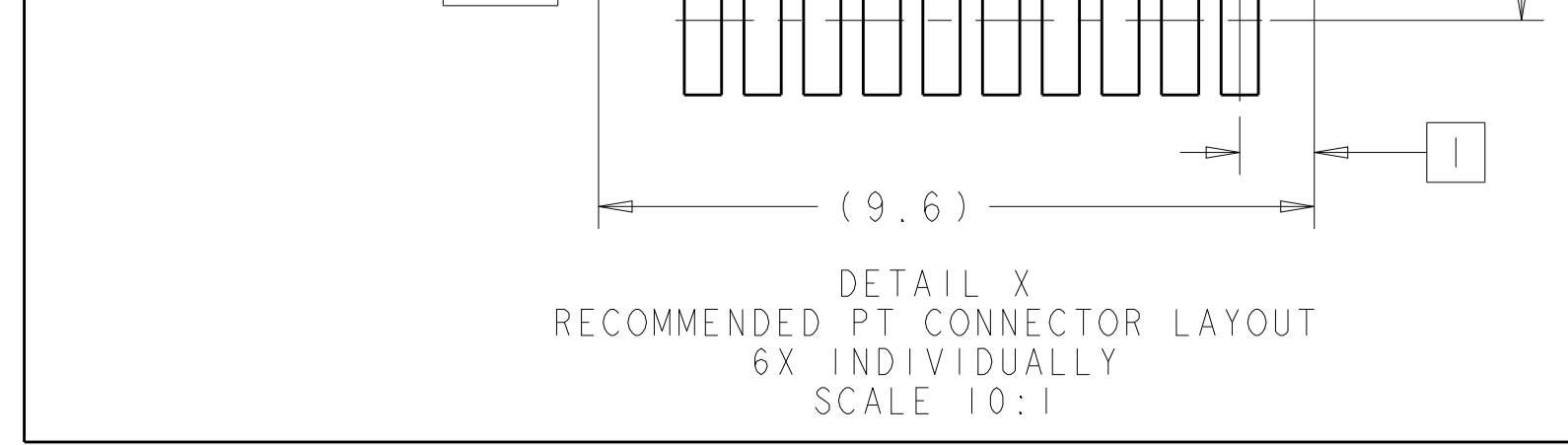
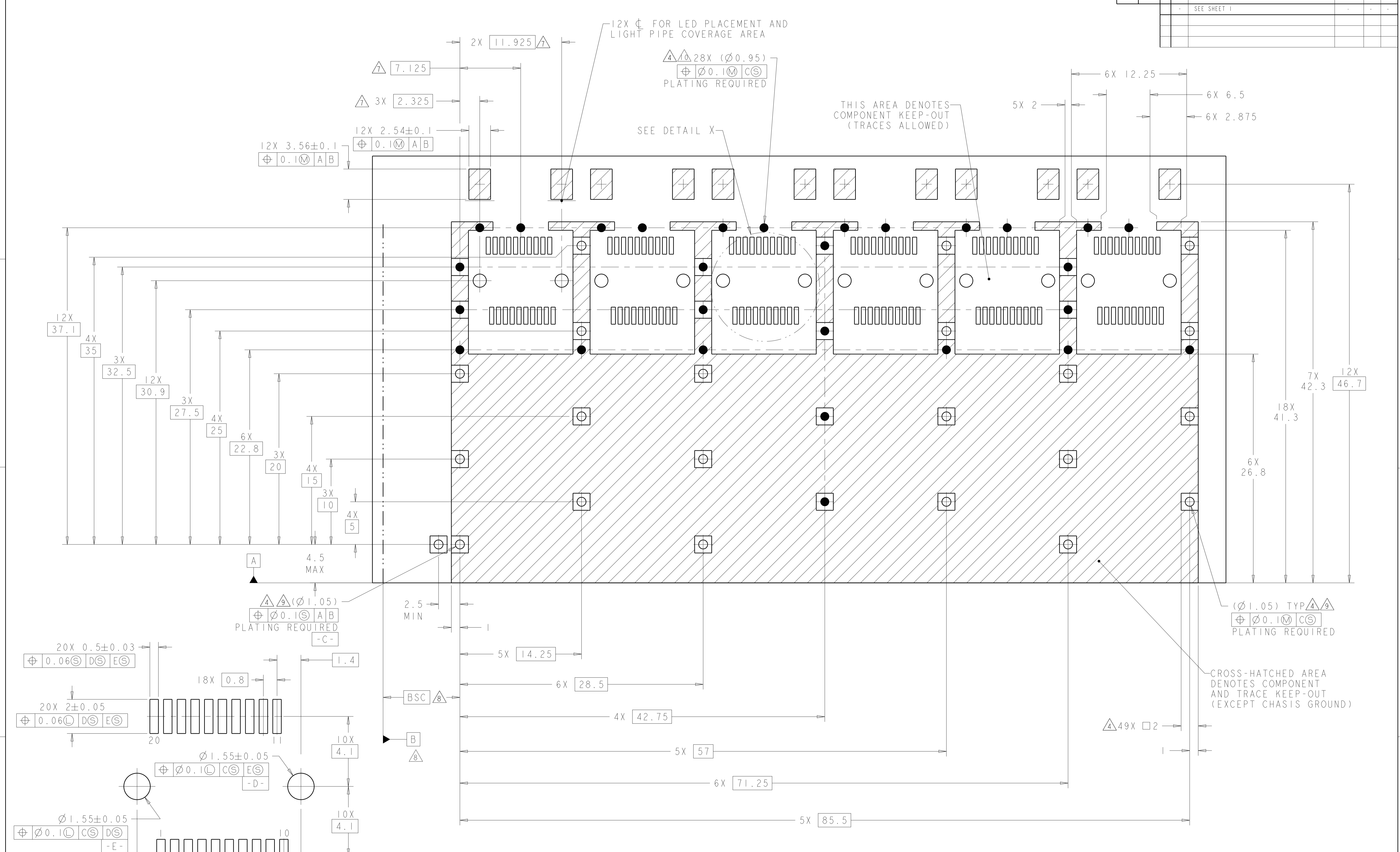
RECOMMENDED BEZEL CUT-OUT  
BELLY TO BELLY APPLICATIONS



MOUNTED BELLY TO BELLY ON PC BOARD  
SHOWN THRU RECOMMENDED BEZEL

THIS DRAWING IS A CONTROLLED DOCUMENT.		DMN: PETER PAN 30MAY2013	TE Connectivity
DIMENSIONS: mm		CHK: SEAN HAN 30MAY2013	
TOLERANCES UNLESS OTHERWISE SPECIFIED:		APVD: SEAN HAN 30MAY2013	NAME: SFP+ 1X6 CAGE ASSEMBLY
0 PLC ±0.2		PRODUCT SPEC: 108-2364	PRESS FIT, EXTERNAL EMI SPRINGS
1 PLC ±0.2		APPLICATION SPEC: 114-13120	WITH LIGHT PIPES
2 PLC ±0.2		WEIGHT: -	SIZE: A1
3 PLC ±0.2		CUSTOMER DRAWING	CAGE CODE: 2170509
4 PLC ±0.2		SCALE: 2:1	SHEET 2 OF 4
ANGLES: ±5°		REV: A1	

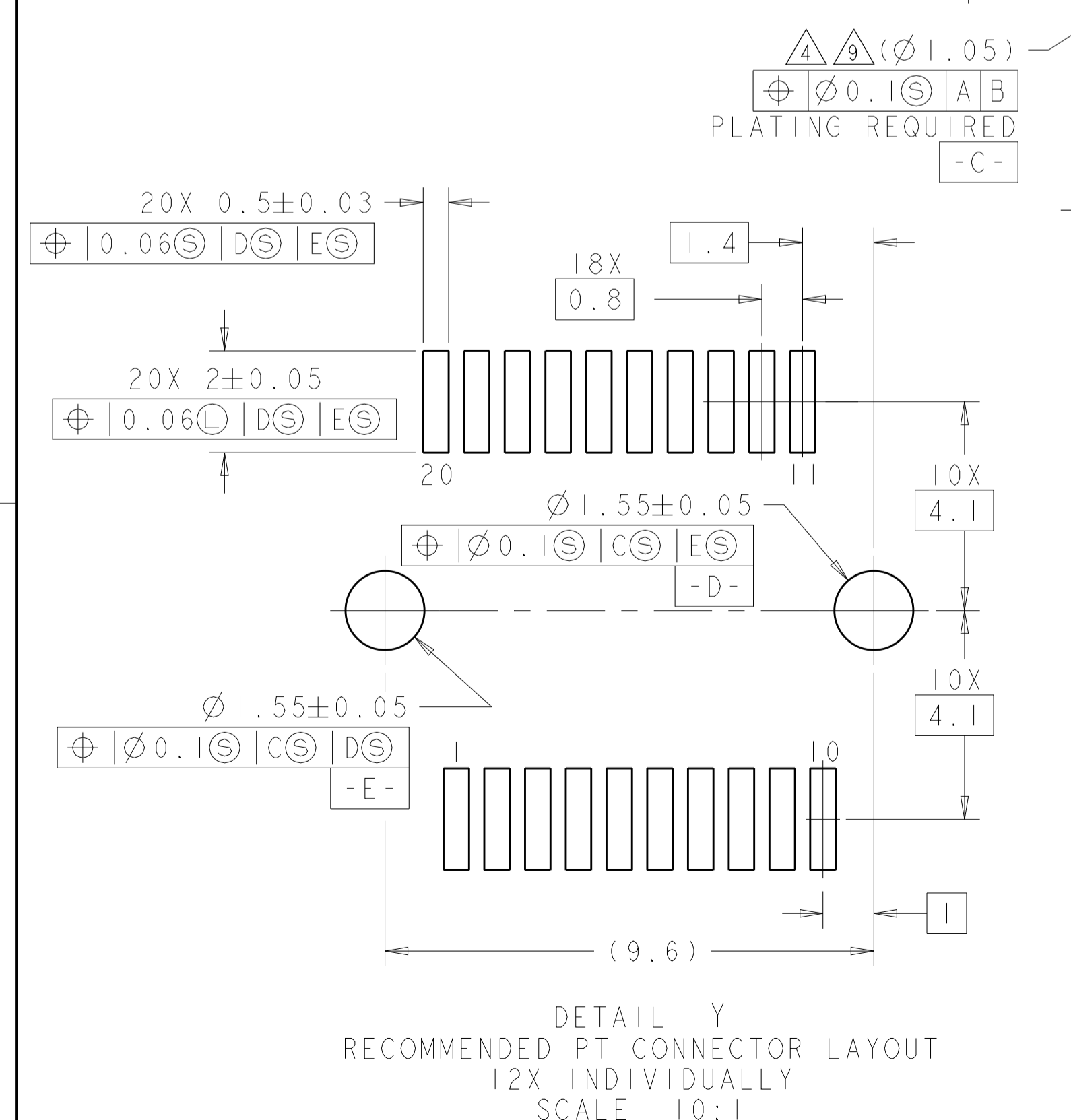
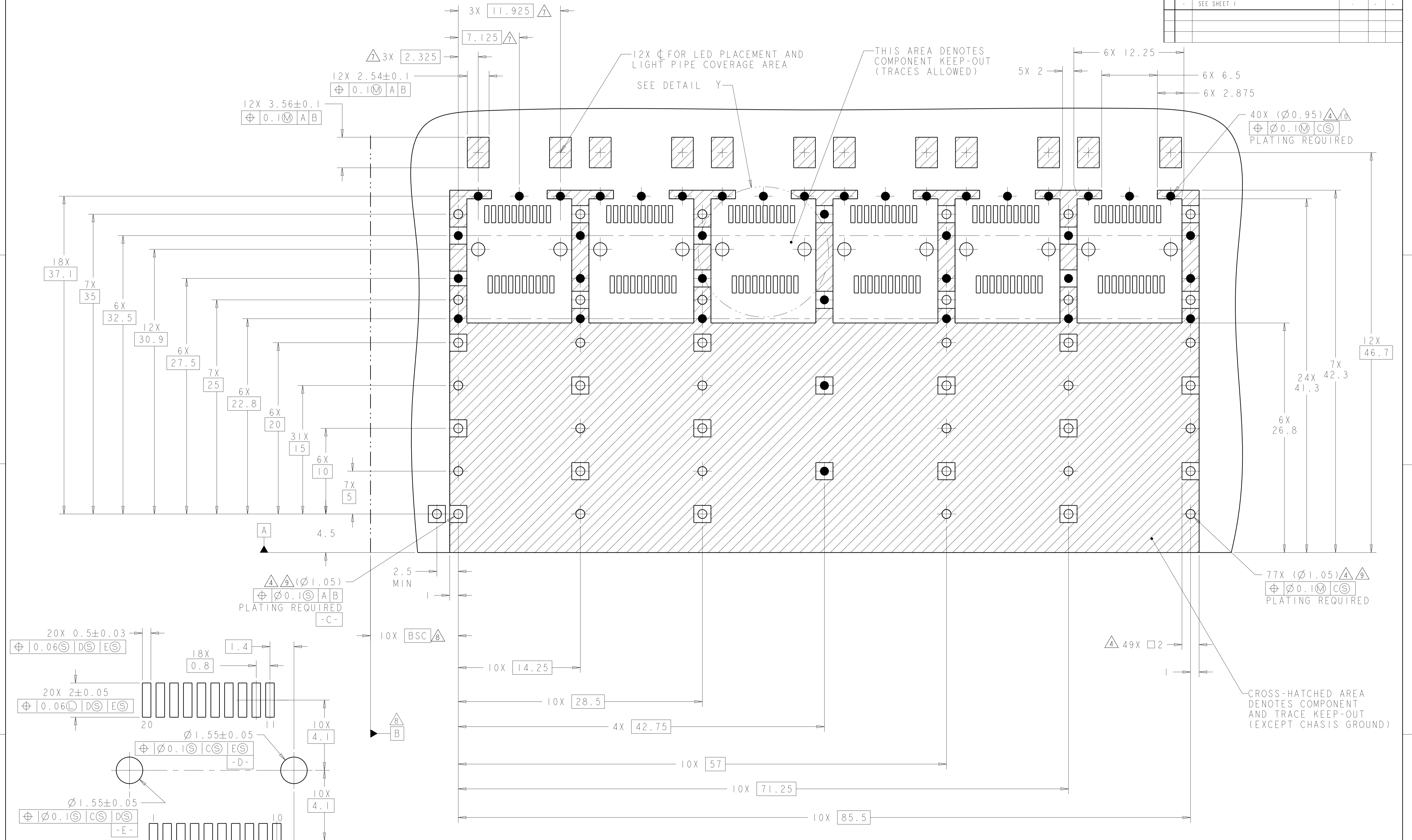
LOC	DIST	REV	DATE	BY	APPD
		1			
		2			
		3			



RECOMMENDED PCB CONFIGURATION  
 WITH KEEP-OUT AREAS  
 SINGLE SIDED APPLICATIONS  
 SCALE 5:1

THIS DRAWING IS A CONTROLLED DOCUMENT.		OWN: PETER PAN 30MAY2013	TE Connectivity
DIMENSIONS: mm		CHK: SEAN HAN 30MAY2013	
TOLERANCES UNLESS OTHERWISE SPECIFIED:		APPD: SEAN HAN 30MAY2013	NAME: SFP+ 1X6 CAGE ASSEMBLY PRESS FIT, EXTERNAL EMI SPRINGS WITH LIGHT PIPES
0 PLC ±0.2		PRODUCT SPEC: 108-2364	
1 PLC ±0.2		APPLICATION SPEC: 114-13120	SIZE: CAGE CODE DRAWING NO: A100779 WEIGHT: - SCALE: 2:1 SHEET 3 OF 4 REV: A1
2 PLC ±0.2		CUSTOMER DRAWING	
3 PLC ±0.2			
4 PLC ±0.2			
ANGLES ±0.2			
FINISH: ±5°			

LOC	DIST	REV	DATE	APP'D
		1		



RECOMMENDED PC BOARD CONFIGURATION  
WITH KEEP-OUT AREAS  
BELLY TO BELLY APPLICATIONS  $\Delta$   
SCALE 5:1

THIS DRAWING IS A CONTROLLED DOCUMENT.		OWN: PETER PAN 30MAY2013	TE Connectivity
DIMENSIONS: mm		CHK: SEAN HAN 30MAY2013	
TOLERANCES UNLESS OTHERWISE SPECIFIED:		APP'D: SEAN HAN 30MAY2013	NAME: SFP+ 1X6 CAGE ASSEMBLY PRESS FIT, EXTERNAL EMI SPRINGS WITH LIGHT PIPES
0 PLC $\pm$ 0.2		PRODUCT SPEC: 108-2364	SIZE: CAGE CODE DRAWING NO: A100779C-2170509
1 PLC $\pm$ 0.2		APPLICATION SPEC: 114-13120	RESTRICTED TO: -
2 PLC $\pm$ 0.2		WEIGHT: -	SCALE: 2:1 SHEET 4 OF 4 REV: A1
3 PLC $\pm$ 0.2		CUSTOMER DRAWING	
4 PLC $\pm$ 0.2			
ANGLES $\pm$ 0.2			
FINISH: $\pm$ 0.05			