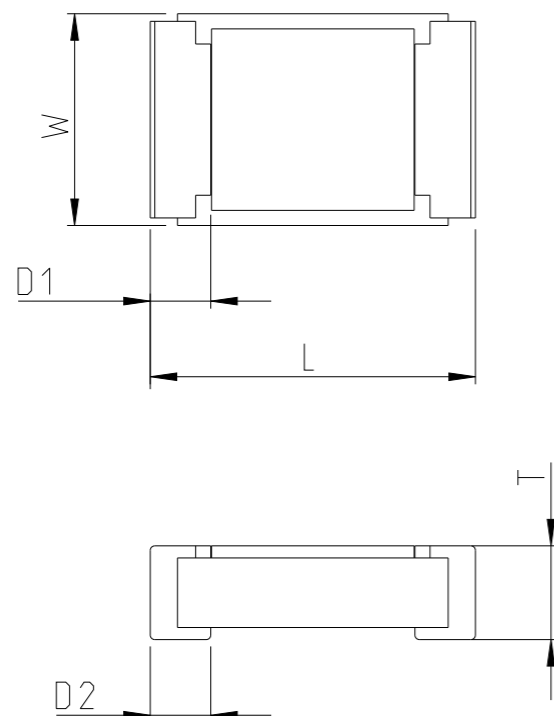


REVISIONS

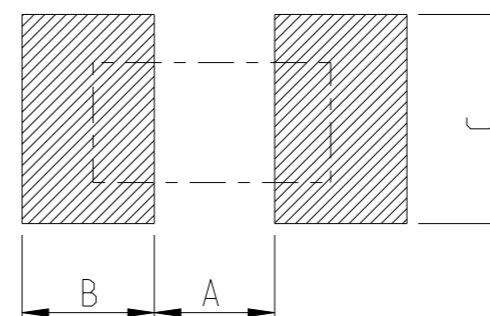
P	LTR	DESCRIPTION	DATE	DWN	APVD
	BB	NEW DRAWING	13SEP2024	RS	SSR
	-	-	-	-	-
	-	-	-	-	-

FOR FURTHER INFORMATION SEE DATA SHEET FOR CURRENT SENSING METAL CHIP RESISTOR - TYPE TLM SERIES



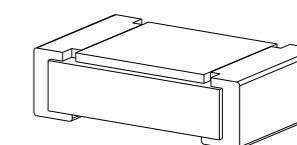
TYPE	SIZE (Inch)	POWER (W)	RESISTANCE RANGE (mΩ)	L	W	T	D1	D2
TLM2A	0805	1/4	10 - 18	2.15±0.15	1.40±0.15	0.68±0.15	0.40±0.25	0.40±0.25
			19 - 100	2.15±0.15	1.40±0.15	0.62±0.15	0.40±0.25	0.40±0.25

RECOMMENDED LAND PATTERN



RESISTANCE RANGE (mΩ)	A (mm)	B (mm)	C (mm)
10 - 18	0.80	1.10	1.35
19 - 100	1.00	1.00	1.35

RoHS Compliant



THIS DRAWING IS A CONTROLLED DOCUMENT.

DWN RAMESHA L S 13SEP2024

CHK SHANTIKIRAN. S R 13SEP2024

APVD SHANTIKIRAN. S R 13SEP2024

PRODUCT SPEC

APPLICATION SPEC

WEIGHT 0.0056 Gram

CUSTOMER DRAWING



TE Connectivity

NAME SMD CURRENT SENSE METAL CHIP RESISTOR TYPE TLM 0805 SERIES

SIZE CAGE CODE DRAWING NO RESTRICTED TO

A3 00779 C=2176155


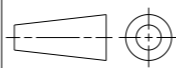
SCALE 20:1 SHEET 1 OF 2 REV BB

DIMENSIONS:	TOLERANCES UNLESS OTHERWISE SPECIFIED:
mm	
	0 PLC ±
	1 PLC ±
	2 PLC ±
	3 PLC ±
	4 PLC ±
	ANGLES ±
MATERIAL	FINISH
-	-
-	-

REVISIONS

P	LTR	DESCRIPTION	DATE	DWN	APVD
	-	SEE SHEET 1	-	-	-

SCHEDULE			
TCPN	CATALOGUE NUMBER	PART DESCRIPTION	PART STATUS
2176155-1	TLM2AER01JTD	TLM 0805 0.25W R01 5% 100PPM 5K RL	PRODUCTION
2176155-2	TLM2AER012JTD	TLM 0805 0.25W R012 5% 100PPM 5K RL	PRODUCTION
2176155-3	TLM2AER015JTD	TLM 0805 0.25W R015 5% 100PPM 5K RL	PRODUCTION
2176155-4	TLM2AER018JTD	TLM 0805 0.25W R018 5% 100PPM 5K RL	PRODUCTION
2176155-5	TLM2AER022JTD	TLM 0805 0.25W R022 5% 100PPM 5K RL	PRODUCTION
2176155-6	TLM2AER027JTD	TLM 0805 0.25W R027 5% 100PPM 5K RL	PRODUCTION
2176155-7	TLM2AER033JTD	TLM 0805 0.25W R033 5% 100PPM 5K RL	PRODUCTION
2176155-8	TLM2AER039JTD	TLM 0805 0.25W R039 5% 100PPM 5K RL	PRODUCTION
2176155-9	TLM2AER047JTD	TLM 0805 0.25W R047 5% 100PPM 5K RL	PRODUCTION
1-2176155-0	TLM2AER056JTD	TLM 0805 0.25W R056 5% 100PPM 5K RL	PRODUCTION
1-2176155-1	TLM2AER068JTD	TLM 0805 0.25W R068 5% 100PPM 5K RL	PRODUCTION
1-2176155-2	TLM2AER082JTD	TLM 0805 0.25W R082 5% 100PPM 5K RL	PRODUCTION
1-2176155-3	TLM2AER10JTD	TLM 0805 0.25W R10 5% 100PPM 5K RL	PRODUCTION
1-2176155-4	TLM2AER01FTD	TLM 0805 0.25W R01 1% 100PPM 5K RL	PRODUCTION
1-2176155-5	TLM2AER011FTD	TLM 0805 0.25W R011 1% 100PPM 5K RL	PRODUCTION
1-2176155-6	TLM2AER012FTD	TLM 0805 0.25W R012 1% 100PPM 5K RL	PRODUCTION
1-2176155-7	TLM2AER013FTD	TLM 0805 0.25W R013 1% 100PPM 5K RL	PRODUCTION
1-2176155-8	TLM2AER015FTD	TLM 0805 0.25W R015 1% 100PPM 5K RL	PRODUCTION
1-2176155-9	TLM2AER016FTD	TLM 0805 0.25W R016 1% 100PPM 5K RL	PRODUCTION
2-2176155-0	TLM2AER018FTD	TLM 0805 0.25W R018 1% 100PPM 5K RL	PRODUCTION
2-2176155-1	TLM2ADR020FTD	TLM 0805 0.25W R020 1% 50PPM 5K RL	PRODUCTION
2-2176155-2	TLM2ADR022FTD	TLM 0805 0.25W R022 1% 50PPM 5K RL	PRODUCTION
2-2176155-3	TLM2ADR024FTD	TLM 0805 0.25W R024 1% 50PPM 5K RL	PRODUCTION
2-2176155-4	TLM2ADR027FTD	TLM 0805 0.25W R027 1% 50PPM 5K RL	PRODUCTION
2-2176155-5	TLM2ADR030FTD	TLM 0805 0.25W R030 1% 50PPM 5K RL	PRODUCTION
2-2176155-6	TLM2ADR033FTD	TLM 0805 0.25W R033 1% 50PPM 5K RL	PRODUCTION
2-2176155-7	TLM2ADR036FTD	TLM 0805 0.25W R036 1% 50PPM 5K RL	PRODUCTION
2-2176155-8	TLM2ADR039FTD	TLM 0805 0.25W R039 1% 50PPM 5K RL	PRODUCTION
2-2176155-9	TLM2ADR043FTD	TLM 0805 0.25W R043 1% 50PPM 5K RL	PRODUCTION
3-2176155-0	TLM2ADR047FTD	TLM 0805 0.25W R047 1% 50PPM 5K RL	PRODUCTION
3-2176155-1	TLM2ADR051FTD	TLM 0805 0.25W R051 1% 50PPM 5K RL	PRODUCTION
3-2176155-2	TLM2ADR056FTD	TLM 0805 0.25W R056 1% 50PPM 5K RL	PRODUCTION
3-2176155-3	TLM2ADR062FTD	TLM 0805 0.25W R062 1% 50PPM 5K RL	PRODUCTION
3-2176155-4	TLM2ADR068FTD	TLM 0805 0.25W R068 1% 50PPM 5K RL	PRODUCTION
3-2176155-5	TLM2ADR075FTD	TLM 0805 0.25W R075 1% 50PPM 5K RL	PRODUCTION
3-2176155-6	TLM2ADR082FTD	TLM 0805 0.25W R082 1% 50PPM 5K RL	PRODUCTION
3-2176155-7	TLM2ADR091FTD	TLM 0805 0.25W R091 1% 50PPM 5K RL	PRODUCTION
3-2176155-8	TLM2ADR10FTD	TLM 0805 0.25W R10 1% 50PPM 5K RL	PRODUCTION

THIS DRAWING IS A CONTROLLED DOCUMENT.		DWN RAMESHA L S 13SEP2024	 TE Connectivity	
DIMENSIONS: mm		CHK SHANTIKIRAN. S R 13SEP2024		
		APVD SHANTIKIRAN. S R 13SEP2024	NAME SMD CURRENT SENSE METAL CHIP RESISTOR TYPE TLM 0805 SERIES	
TOLERANCES UNLESS OTHERWISE SPECIFIED:		PRODUCT SPEC -	APPLICATION SPEC -	
MATERIAL -		FINISH -	SIZE A3	CAGE CODE 00779
			DRAWING NO C=2176155	RESTRICTED TO -
			WEIGHT 0.0056 Gram	SCALE 20:1
			CUSTOMER DRAWING	SHEET 2 OF 2
				REV BB