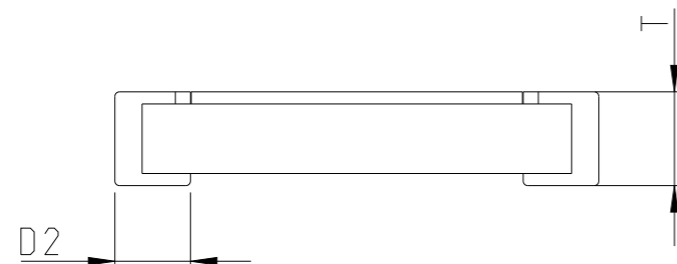
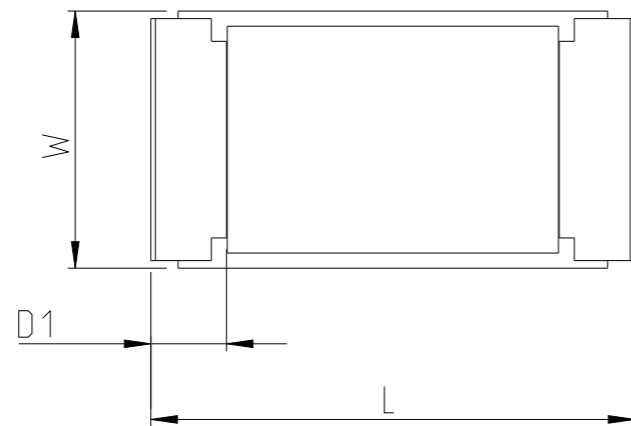


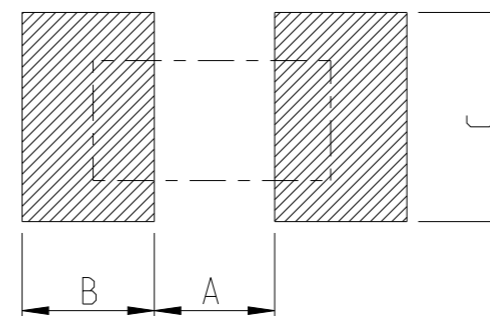
| P | LTR | DESCRIPTION                     | DATE      | DWN | APVD |
|---|-----|---------------------------------|-----------|-----|------|
|   | BA  | NEW DRAWING                     | 06FEB2013 | KR  | TN   |
|   | BA1 | SCHEDULE AND LAND PATTERN ADDED | 08MAY2023 | DM  | AP   |
|   | BB  | OVERCOAT AND DIMENSIONAL CHANGE | 13SEP2024 | RS  | SSR  |

FOR FURTHER INFORMATION SEE DATA SHEET FOR CURRENT SENSING METAL CHIP RESISTOR - TYPE TLM SERIES



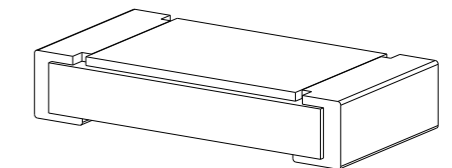
| TYPE  | SIZE (Inch) | POWER (W) | RESISTANCE RANGE (mΩ) | L         | W         | T         | D1        | D2        |
|-------|-------------|-----------|-----------------------|-----------|-----------|-----------|-----------|-----------|
| TLM2B | 1206        | 1/2       | 10 - 18               | 3.20±0.15 | 1.70±0.15 | 0.68±0.15 | 0.50±0.25 | 0.50±0.25 |
|       |             |           | 19 - 100              | 3.20±0.15 | 1.70±0.15 | 0.62±0.15 | 0.50±0.25 | 0.50±0.25 |

RECOMMENDED LAND PATTERN



| RESISTANCE RANGE (mΩ) | A (mm) | B (mm) | C (mm) |
|-----------------------|--------|--------|--------|
| 10 - 18               | 0.90   | 1.70   | 1.70   |
| 19 - 100              | 1.50   | 1.40   | 1.70   |

RoHS Compliant



|  |  |                                |   |                 |                      |               |
|--|--|--------------------------------|---|-----------------|----------------------|---------------|
| THIS DRAWING IS A CONTROLLED DOCUMENT. |  | DWN 06FEB2013<br>RAGHAVENDRA K |   |                 |                      |               |
| DIMENSIONS: mm                         |  | CHK 06FEB2013<br>ALLAN P       |   |                 |                      |               |
| TOLERANCES UNLESS OTHERWISE SPECIFIED: |  | APVD 06FEB2013<br>TONY N       | NAME<br>SMD CURRENT SENSE METAL CHIP RESISTOR<br>TYPE TLM 1206 SERIES |                 |                      |               |
|  |  | PRODUCT SPEC<br>-              | APPLICATION SPEC<br>-   |                 |                      |               |
| MATERIAL                               |  | WEIGHT 0.011 Gram              | SIZE A3   | CAGE CODE 00779 | DRAWING NO C=2176156 | RESTRICTED TO |
| FINISH                                 |  | CUSTOMER DRAWING               | SCALE 20:1  | SHEET 1 OF 2    | REV BB               |               |

REVISIONS

| P | LTR | DESCRIPTION | DATE | DWN | APVD |
|---|-----|-------------|------|-----|------|
| - | -   | SEE SHEET 1 | -    | -   | -    |
|   |     |             |      |     |      |
|   |     |             |      |     |      |

| SCHEDULE    |                  |                  |      |      |                      |             |
|-------------|------------------|------------------|------|------|----------------------|-------------|
| TCPN        | CATALOGUE NUMBER | PART DESCRIPTION |      |      |                      | PART STATUS |
| 2176156-1   | TLM2BER01JTD     | TLM              | 1206 | 0.5W | R01 5% 100PPM 5K RL  | PRODUCTION  |
| 2176156-2   | TLM2BER012JTD    | TLM              | 1206 | 0.5W | R012 5% 100PPM 5K RL | PRODUCTION  |
| 2176156-3   | TLM2BER015JTD    | TLM              | 1206 | 0.5W | R015 5% 100PPM 5K RL | PRODUCTION  |
| 2176156-4   | TLM2BER018JTD    | TLM              | 1206 | 0.5W | R018 5% 100PPM 5K RL | PRODUCTION  |
| 2176156-5   | TLM2BER022JTD    | TLM              | 1206 | 0.5W | R022 5% 100PPM 5K RL | PRODUCTION  |
| 2176156-6   | TLM2BER027JTD    | TLM              | 1206 | 0.5W | R027 5% 100PPM 5K RL | PRODUCTION  |
| 2176156-7   | TLM2BER033JTD    | TLM              | 1206 | 0.5W | R033 5% 100PPM 5K RL | PRODUCTION  |
| 2176156-8   | TLM2BER039JTD    | TLM              | 1206 | 0.5W | R039 5% 100PPM 5K RL | PRODUCTION  |
| 2176156-9   | TLM2BER047JTD    | TLM              | 1206 | 0.5W | R047 5% 100PPM 5K RL | PRODUCTION  |
| 1-2176156-0 | TLM2BER056JTD    | TLM              | 1206 | 0.5W | R056 5% 100PPM 5K RL | PRODUCTION  |
| 1-2176156-1 | TLM2BER068JTD    | TLM              | 1206 | 0.5W | R068 5% 100PPM 5K RL | PRODUCTION  |
| 1-2176156-2 | TLM2BER082JTD    | TLM              | 1206 | 0.5W | R082 5% 100PPM 5K RL | PRODUCTION  |
| 1-2176156-3 | TLM2BER10JTD     | TLM              | 1206 | 0.5W | R10 5% 100PPM 5K RL  | PRODUCTION  |
| 1-2176156-4 | TLM2BER01FTD     | TLM              | 1206 | 0.5W | R01 1% 100PPM 5K RL  | PRODUCTION  |
| 1-2176156-5 | TLM2BER011FTD    | TLM              | 1206 | 0.5W | R011 1% 100PPM 5K RL | PRODUCTION  |
| 1-2176156-6 | TLM2BER012FTD    | TLM              | 1206 | 0.5W | R012 1% 100PPM 5K RL | PRODUCTION  |
| 1-2176156-7 | TLM2BER013FTD    | TLM              | 1206 | 0.5W | R013 1% 100PPM 5K RL | PRODUCTION  |
| 1-2176156-8 | TLM2BER015FTD    | TLM              | 1206 | 0.5W | R015 1% 100PPM 5K RL | PRODUCTION  |
| 1-2176156-9 | TLM2BER016FTD    | TLM              | 1206 | 0.5W | R016 1% 100PPM 5K RL | PRODUCTION  |
| 2-2176156-0 | TLM2BER018FTD    | TLM              | 1206 | 0.5W | R018 1% 100PPM 5K RL | PRODUCTION  |
| 2-2176156-1 | TLM2BDR020FTD    | TLM              | 1206 | 0.5W | R020 1% 50PPM 5K RL  | PRODUCTION  |
| 2-2176156-2 | TLM2BDR022FTD    | TLM              | 1206 | 0.5W | R022 1% 50PPM 5K RL  | PRODUCTION  |
| 2-2176156-3 | TLM2BDR024FTD    | TLM              | 1206 | 0.5W | R024 1% 50PPM 5K RL  | PRODUCTION  |
| 2-2176156-4 | TLM2BDR027FTD    | TLM              | 1206 | 0.5W | R027 1% 50PPM 5K RL  | PRODUCTION  |
| 2-2176156-5 | TLM2BDR030FTD    | TLM              | 1206 | 0.5W | R030 1% 50PPM 5K RL  | PRODUCTION  |
| 2-2176156-6 | TLM2BDR033FTD    | TLM              | 1206 | 0.5W | R033 1% 50PPM 5K RL  | PRODUCTION  |
| 2-2176156-7 | TLM2BDR036FTD    | TLM              | 1206 | 0.5W | R036 1% 50PPM 5K RL  | PRODUCTION  |
| 2-2176156-8 | TLM2BDR039FTD    | TLM              | 1206 | 0.5W | R039 1% 50PPM 5K RL  | PRODUCTION  |
| 2-2176156-9 | TLM2BDR043FTD    | TLM              | 1206 | 0.5W | R043 1% 50PPM 5K RL  | PRODUCTION  |
| 3-2176156-0 | TLM2BDR047FTD    | TLM              | 1206 | 0.5W | R047 1% 50PPM 5K RL  | PRODUCTION  |
| 3-2176156-1 | TLM2BDR051FTD    | TLM              | 1206 | 0.5W | R051 1% 50PPM 5K RL  | PRODUCTION  |
| 3-2176156-2 | TLM2BDR056FTD    | TLM              | 1206 | 0.5W | R056 1% 50PPM 5K RL  | PRODUCTION  |
| 3-2176156-3 | TLM2BDR062FTD    | TLM              | 1206 | 0.5W | R062 1% 50PPM 5K RL  | PRODUCTION  |
| 3-2176156-4 | TLM2BDR068FTD    | TLM              | 1206 | 0.5W | R068 1% 50PPM 5K RL  | PRODUCTION  |
| 3-2176156-5 | TLM2BDR075FTD    | TLM              | 1206 | 0.5W | R075 1% 50PPM 5K RL  | PRODUCTION  |
| 3-2176156-6 | TLM2BDR082FTD    | TLM              | 1206 | 0.5W | R082 1% 50PPM 5K RL  | PRODUCTION  |
| 3-2176156-7 | TLM2BDR091FTD    | TLM              | 1206 | 0.5W | R091 1% 50PPM 5K RL  | PRODUCTION  |
| 3-2176156-8 | TLM2BDR10FTD     | TLM              | 1206 | 0.5W | R10 1% 50PPM 5K RL   | PRODUCTION  |
| 3-2176156-9 | TLM2BDR090FTD    | TLM              | 1206 | 0.5W | R090 1% 50PPM 5K RL  | PRODUCTION  |

THIS DRAWING IS A CONTROLLED DOCUMENT.

DIMENSIONS:  
mm



MATERIAL

TOLERANCES UNLESS OTHERWISE SPECIFIED:

- 0 PLC ±
- 1 PLC ±
- 2 PLC ±
- 3 PLC ±
- 4 PLC ±
- ANGLES ±
- FINISH -

DWN 06FEB2013

RAGHAVENDRA K

CHK 06FEB2013

ALLAN P

APVD 06FEB2013

TONY N

PRODUCT SPEC

APPLICATION SPEC

WEIGHT 0.011 Gram

CUSTOMER DRAWING



TE Connectivity

NAME SMD CURRENT SENSE METAL CHIP RESISTOR  
TYPE TLM 1206 SERIES

SIZE CAGE CODE DRAWING NO RESTRICTED TO

A3 00779 C=2176156

SCALE 20:1 SHEET 2 OF 2 REV BB