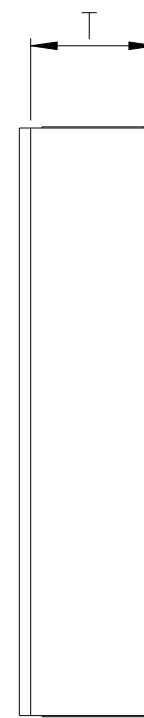
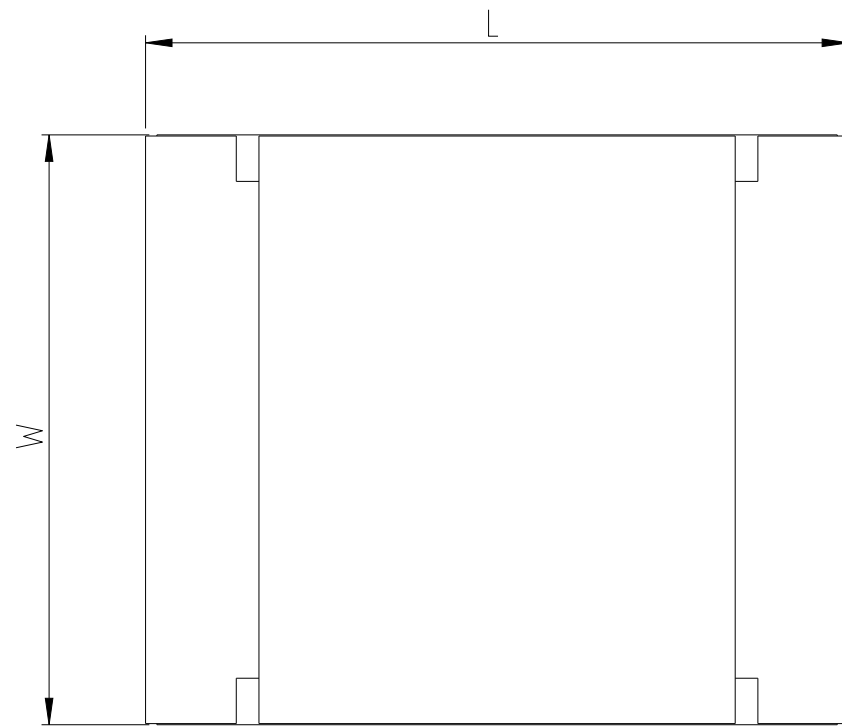
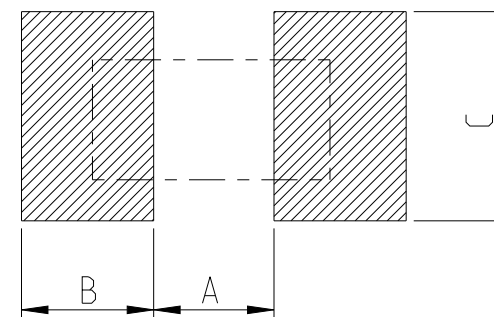
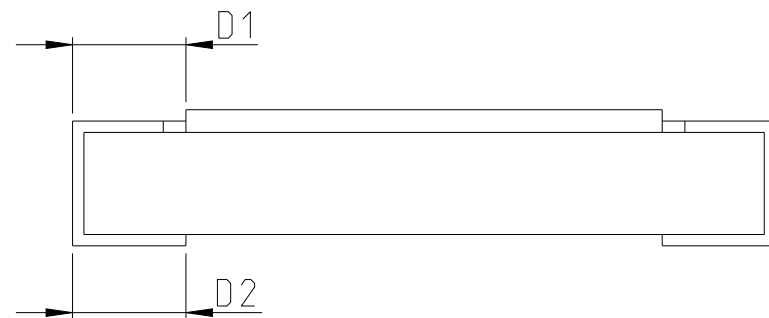


P	LTR	DESCRIPTION	DATE	DWN	APVD
	BA	INITIAL DRAWING RELEASE	01FEB2023	DM	AP



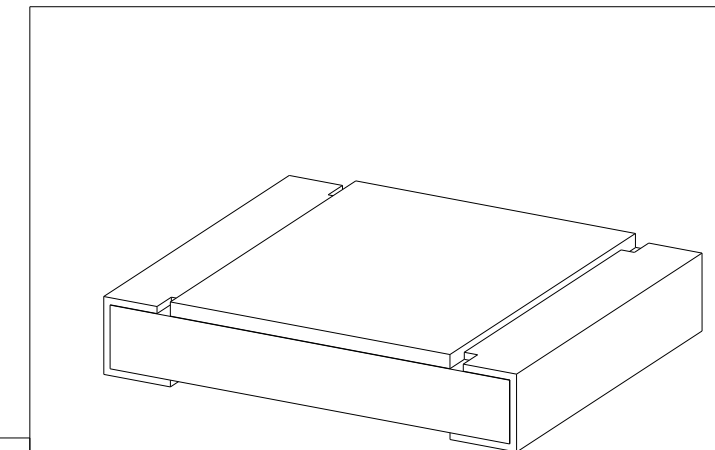
FOR FURTHER INFORMATION SEE DATA SHEET FOR RLC73P SERIES SMD LOW OHMIC CURRENT SENSING RESISTOR

RECOMMENDED LAND PATTERN



SIZE	A (mm)	B (mm)	C (mm)
1210	2.00	1.15	2.50±0.20

RoHS Compliant



SIZE	L (mm)	W (mm)	T (mm)	D1 (mm)	D2 (mm)
1210	3.10±0.10	2.60±0.15	0.55±0.10	0.50±0.30	0.50±0.25

THIS DRAWING IS A CONTROLLED DOCUMENT.

DWN D. BANGERA 01FEB2023

CHK A. PILE 01FEB2023

APVD A. PILE 01FEB2023

PRODUCT SPEC

APPLICATION SPEC

WEIGHT

CUSTOMER DRAWING



NAME SMD LOW OHMIC CURRENT SENSE RESISTORS TYPE RLC73P 1210 SERIES

SIZE CAGE CODE DRAWING NO RESTRICTED TO

A3 00779 C=2176589

SCALE 30:1 SHEET 1 OF 3 REV BA

DIMENSIONS:	TOLERANCES UNLESS OTHERWISE SPECIFIED:
mm	
	0 PLC ±
	1 PLC ±
	2 PLC ±
	3 PLC ±
	4 PLC ±
	ANGLES ±
MATERIAL	FINISH
-	-
-	-

REVISIONS

P	LTR	DESCRIPTION	DATE	DWN	APVD
	-	SEE SHEET 1	-	-	-

SCHEDULE

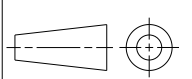
TCPN	CATALOGUE NUMBER	PART DESCRIPTION	PART STATUS
2176589-1	RLC73PV2ER01FTD	RLC73PV 2E R01 1% 5K RL	PRODUCTION
2176589-2	RLC73PV2ER011FTD	RLC73PV 2E R011 1% 5K RL	PRODUCTION
2176589-3	RLC73PV2ER012FTD	RLC73PV 2E R012 1% 5K RL	PRODUCTION
2176589-4	RLC73PV2ER013FTD	RLC73PV 2E R013 1% 5K RL	PRODUCTION
2176589-5	RLC73PV2ER015FTD	RLC73PV 2E R015 1% 5K RL	PRODUCTION
2176589-6	RLC73PV2ER016FTD	RLC73PV 2E R016 1% 5K RL	PRODUCTION
2176589-7	RLC73PV2ER018FTD	RLC73PV 2E R018 1% 5K RL	PRODUCTION
2176589-8	RLC73PV2ER02FTD	RLC73PV 2E R02 1% 5K RL	PRODUCTION
2176589-9	RLC73PM2ER022FTD	RLC73PM 2E R022 1% 5K RL	PRODUCTION
1-2176589-0	RLC73PM2ER024FTD	RLC73PM 2E R024 1% 5K RL	PRODUCTION
1-2176589-1	RLC73PM2ER027FTD	RLC73PM 2E R027 1% 5K RL	PRODUCTION
1-2176589-2	RLC73PM2ER03FTD	RLC73PM 2E R03 1% 5K RL	PRODUCTION
1-2176589-3	RLC73PM2ER033FTD	RLC73PM 2E R033 1% 5K RL	PRODUCTION
1-2176589-4	RLC73PM2ER036FTD	RLC73PM 2E R036 1% 5K RL	PRODUCTION
1-2176589-5	RLC73PM2ER039FTD	RLC73PM 2E R039 1% 5K RL	PRODUCTION
1-2176589-6	RLC73PM2ER043FTD	RLC73PM 2E R043 1% 5K RL	PRODUCTION
1-2176589-7	RLC73PM2ER047FTD	RLC73PM 2E R047 1% 5K RL	PRODUCTION
1-2176589-8	RLC73PW 2ER051FTD	RLC73PW 2E R051 1% 5K RL	PRODUCTION
1-2176589-9	RLC73PW 2ER056FTD	RLC73PW 2E R056 1% 5K RL	PRODUCTION
2-2176589-0	RLC73PW 2ER062FTD	RLC73PW 2E R062 1% 5K RL	PRODUCTION
2-2176589-1	RLC73PW 2ER068FTD	RLC73PW 2E R068 1% 5K RL	PRODUCTION
2-2176589-2	RLC73PW 2ER075FTD	RLC73PW 2E R075 1% 5K RL	PRODUCTION
2-2176589-3	RLC73PW 2ER082FTD	RLC73PW 2E R082 1% 5K RL	PRODUCTION
2-2176589-4	RLC73PW 2ER091FTD	RLC73PW 2E R091 1% 5K RL	PRODUCTION
2-2176589-5	RLC73PW 2ER10FTD	RLC73PW 2E R10 1% 5K RL	PRODUCTION
2-2176589-6	RLC73PW 2ER102FTD	RLC73PW 2E R102 1% 5K RL	PRODUCTION
2-2176589-7	RLC73PW 2ER105FTD	RLC73PW 2E R105 1% 5K RL	PRODUCTION
2-2176589-8	RLC73PW 2ER107FTD	RLC73PW 2E R107 1% 5K RL	PRODUCTION
2-2176589-9	RLC73PW 2ER11FTD	RLC73PW 2E R11 1% 5K RL	PRODUCTION
3-2176589-0	RLC73PW 2ER113FTD	RLC73PW 2E R113 1% 5K RL	PRODUCTION
3-2176589-1	RLC73PW 2ER115FTD	RLC73PW 2E R115 1% 5K RL	PRODUCTION
3-2176589-2	RLC73PW 2ER118FTD	RLC73PW 2E R118 1% 5K RL	PRODUCTION
3-2176589-3	RLC73PW 2ER121FTD	RLC73PW 2E R121 1% 5K RL	PRODUCTION

SCHEDULE

TCPN	CATALOGUE NUMBER	PART DESCRIPTION	PART STATUS
3-2176589-4	RLC73PW 2ER124FTD	RLC73PW 2E R124 1% 5K RL	PRODUCTION
3-2176589-5	RLC73PW 2ER127FTD	RLC73PW 2E R127 1% 5K RL	PRODUCTION
3-2176589-6	RLC73PW 2ER13FTD	RLC73PW 2E R13 1% 5K RL	PRODUCTION
3-2176589-7	RLC73PW 2ER133FTD	RLC73PW 2E R133 1% 5K RL	PRODUCTION
3-2176589-8	RLC73PW 2ER137FTD	RLC73PW 2E R137 1% 5K RL	PRODUCTION
3-2176589-9	RLC73PW 2ER14FTD	RLC73PW 2E R14 1% 5K RL	PRODUCTION
4-2176589-0	RLC73PW 2ER143FTD	RLC73PW 2E R143 1% 5K RL	PRODUCTION
4-2176589-1	RLC73PW 2ER147FTD	RLC73PW 2E R147 1% 5K RL	PRODUCTION
4-2176589-2	RLC73PD2ER15FTD	RLC73PD 2E R15 1% 5K RL	PRODUCTION
4-2176589-3	RLC73PD2ER154FTD	RLC73PD 2E R154 1% 5K RL	PRODUCTION
4-2176589-4	RLC73PD2ER158FTD	RLC73PD 2E R158 1% 5K RL	PRODUCTION
4-2176589-5	RLC73PD2ER162FTD	RLC73PD 2E R162 1% 5K RL	PRODUCTION
4-2176589-6	RLC73PD2ER165FTD	RLC73PD 2E R165 1% 5K RL	PRODUCTION
4-2176589-7	RLC73PD2ER169FTD	RLC73PD 2E R169 1% 5K RL	PRODUCTION
4-2176589-8	RLC73PD2ER174FTD	RLC73PD 2E R174 1% 5K RL	PRODUCTION
4-2176589-9	RLC73PD2ER178FTD	RLC73PD 2E R178 1% 5K RL	PRODUCTION
5-2176589-0	RLC73PD2ER182FTD	RLC73PD 2E R182 1% 5K RL	PRODUCTION
5-2176589-1	RLC73PD2ER187FTD	RLC73PD 2E R187 1% 5K RL	PRODUCTION
5-2176589-2	RLC73PD2ER191FTD	RLC73PD 2E R191 1% 5K RL	PRODUCTION
5-2176589-3	RLC73PD2ER196FTD	RLC73PD 2E R196 1% 5K RL	PRODUCTION
5-2176589-4	RLC73PD2ER20FTD	RLC73PD 2E R20 1% 5K RL	PRODUCTION
5-2176589-5	RLC73PD2ER205FTD	RLC73PD 2E R205 1% 5K RL	PRODUCTION
5-2176589-6	RLC73PD2ER21FTD	RLC73PD 2E R21 1% 5K RL	PRODUCTION
5-2176589-7	RLC73PD2ER215FTD	RLC73PD 2E R215 1% 5K RL	PRODUCTION
5-2176589-8	RLC73PD2ER221FTD	RLC73PD 2E R221 1% 5K RL	PRODUCTION
5-2176589-9	RLC73PD2ER226FTD	RLC73PD 2E R226 1% 5K RL	PRODUCTION
6-2176589-0	RLC73PD2ER232FTD	RLC73PD 2E R232 1% 5K RL	PRODUCTION
6-2176589-1	RLC73PD2ER237FTD	RLC73PD 2E R237 1% 5K RL	PRODUCTION
6-2176589-2	RLC73PD2ER243FTD	RLC73PD 2E R243 1% 5K RL	PRODUCTION
6-2176589-3	RLC73PD2ER249FTD	RLC73PD 2E R249 1% 5K RL	PRODUCTION
6-2176589-4	RLC73PD2ER255FTD	RLC73PD 2E R255 1% 5K RL	PRODUCTION
6-2176589-5	RLC73PD2ER261FTD	RLC73PD 2E R261 1% 5K RL	PRODUCTION
6-2176589-6	RLC73PD2ER267FTD	RLC73PD 2E R267 1% 5K RL	PRODUCTION

THIS DRAWING IS A CONTROLLED DOCUMENT.

DIMENSIONS:
mm



MATERIAL
-

TOLERANCES UNLESS OTHERWISE SPECIFIED:

- 0 PLC ±
- 1 PLC ±
- 2 PLC ±
- 3 PLC ±
- 4 PLC ±
- ANGLES ±
- FINISH -

DWN 01FEB2023
D. BANGERA

CHK 01FEB2023
A. PILE

APVD 01FEB2023
A. PILE

PRODUCT SPEC

APPLICATION SPEC

WEIGHT -

CUSTOMER DRAWING



TE Connectivity

NAME
SMD LOW OHMIC CURRENT SENSE RESISTORS
TYPE RLC73P 1210 SERIES

SIZE	CAGE CODE	DRAWING NO	RESTRICTED TO
A3	00779	©-2176589	-

SCALE	SHEET	OF	REV
10:1	2	3	BA

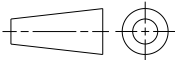
REVISIONS

P	LTR	DESCRIPTION	DATE	DWN	APVD
-		SEE SHEET 1	-	-	-

SCHEDULE

TCPN	CATALOGUE NUMBER	PART DESCRIPTION	PART STATUS
6-2176589-7	RLC73PD2ER274FTD	RLC73PD 2E R274 1% 5K RL	PRODUCTION
6-2176589-8	RLC73PD2ER28FTD	RLC73PD 2E R28 1% 5K RL	PRODUCTION
6-2176589-9	RLC73PD2ER287FTD	RLC73PD 2E R287 1% 5K RL	PRODUCTION
7-2176589-0	RLC73PD2ER294FTD	RLC73PD 2E R294 1% 5K RL	PRODUCTION
7-2176589-1	RLC73PD2ER301FTD	RLC73PD 2E R301 1% 5K RL	PRODUCTION
7-2176589-2	RLC73PD2ER309FTD	RLC73PD 2E R309 1% 5K RL	PRODUCTION
7-2176589-3	RLC73PD2ER316FTD	RLC73PD 2E R316 1% 5K RL	PRODUCTION
7-2176589-4	RLC73PD2ER324FTD	RLC73PD 2E R324 1% 5K RL	PRODUCTION
7-2176589-5	RLC73PD2ER332FTD	RLC73PD 2E R332 1% 5K RL	PRODUCTION
7-2176589-6	RLC73PD2ER34FTD	RLC73PD 2E R34 1% 5K RL	PRODUCTION
7-2176589-7	RLC73PD2ER348FTD	RLC73PD 2E R348 1% 5K RL	PRODUCTION
7-2176589-8	RLC73PD2ER357FTD	RLC73PD 2E R357 1% 5K RL	PRODUCTION
7-2176589-9	RLC73PD2ER365FTD	RLC73PD 2E R365 1% 5K RL	PRODUCTION
8-2176589-0	RLC73PD2ER374FTD	RLC73PD 2E R374 1% 5K RL	PRODUCTION
8-2176589-1	RLC73PD2ER383FTD	RLC73PD 2E R383 1% 5K RL	PRODUCTION
8-2176589-2	RLC73PD2ER392FTD	RLC73PD 2E R392 1% 5K RL	PRODUCTION
8-2176589-3	RLC73PD2ER402FTD	RLC73PD 2E R402 1% 5K RL	PRODUCTION
8-2176589-4	RLC73PD2ER412FTD	RLC73PD 2E R412 1% 5K RL	PRODUCTION
8-2176589-5	RLC73PD2ER422FTD	RLC73PD 2E R422 1% 5K RL	PRODUCTION
8-2176589-6	RLC73PD2ER432FTD	RLC73PD 2E R432 1% 5K RL	PRODUCTION
8-2176589-7	RLC73PD2ER442FTD	RLC73PD 2E R442 1% 5K RL	PRODUCTION
8-2176589-8	RLC73PD2ER453FTD	RLC73PD 2E R453 1% 5K RL	PRODUCTION
8-2176589-9	RLC73PD2ER464FTD	RLC73PD 2E R464 1% 5K RL	PRODUCTION
9-2176589-0	RLC73PD2ER475FTD	RLC73PD 2E R475 1% 5K RL	PRODUCTION
9-2176589-1	RLC73PD2ER487FTD	RLC73PD 2E R487 1% 5K RL	PRODUCTION
9-2176589-2	RLC73PD2ER499FTD	RLC73PD 2E R499 1% 5K RL	PRODUCTION
9-2176589-3	RLC73PD2ER511FTD	RLC73PD 2E R511 1% 5K RL	PRODUCTION
9-2176589-4	RLC73PD2ER523FTD	RLC73PD 2E R523 1% 5K RL	PRODUCTION
9-2176589-5	RLC73PD2ER536FTD	RLC73PD 2E R536 1% 5K RL	PRODUCTION
9-2176589-6	RLC73PD2ER549FTD	RLC73PD 2E R549 1% 5K RL	PRODUCTION
9-2176589-7	RLC73PD2ER562FTD	RLC73PD 2E R562 1% 5K RL	PRODUCTION
9-2176589-8	RLC73PD2ER576FTD	RLC73PD 2E R576 1% 5K RL	PRODUCTION
9-2176589-9	RLC73PD2ER59FTD	RLC73PD 2E R59 1% 5K RL	PRODUCTION

THIS DRAWING IS A CONTROLLED DOCUMENT.

DIMENSIONS: mm	TOLERANCES UNLESS OTHERWISE SPECIFIED:
	0 PLC ± 1 PLC ± 2 PLC ± 3 PLC ± 4 PLC ± ANGLES ±
MATERIAL	FINISH
-	-
-	-

DWN D. BANGERA	01FEB2023
CHK A. PILE	01FEB2023
APVD A. PILE	01FEB2023
PRODUCT SPEC	-
APPLICATION SPEC	-
WEIGHT	-
CUSTOMER DRAWING	

TE TE Connectivity

NAME
SMD LOW OHMIC CURRENT SENSE RESISTORS
TYPE RLC73P 1210 SERIES

SIZE	CAGE CODE	DRAWING NO	RESTRICTED TO
A3	00779	©=2176589	-

SCALE 30:1 SHEET 3 OF 3 REV BA