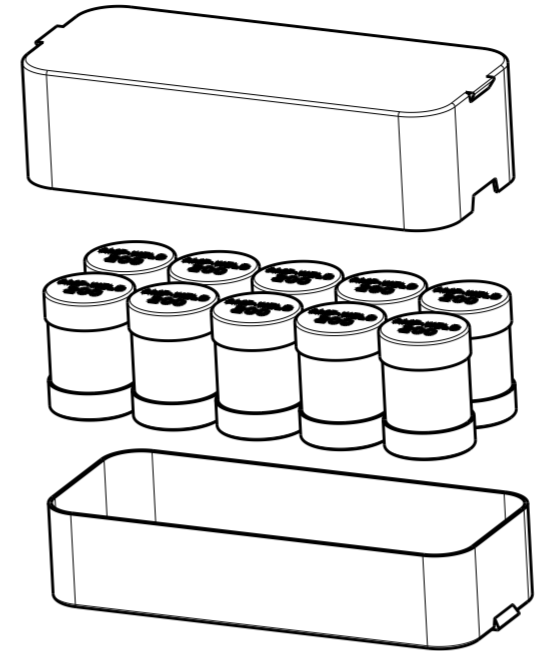
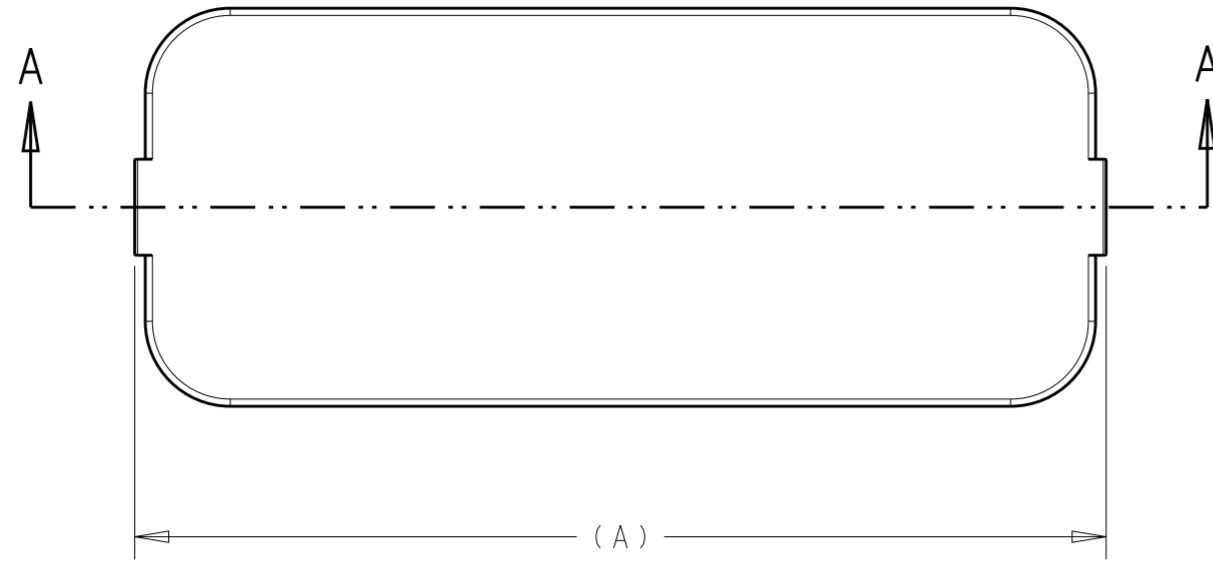
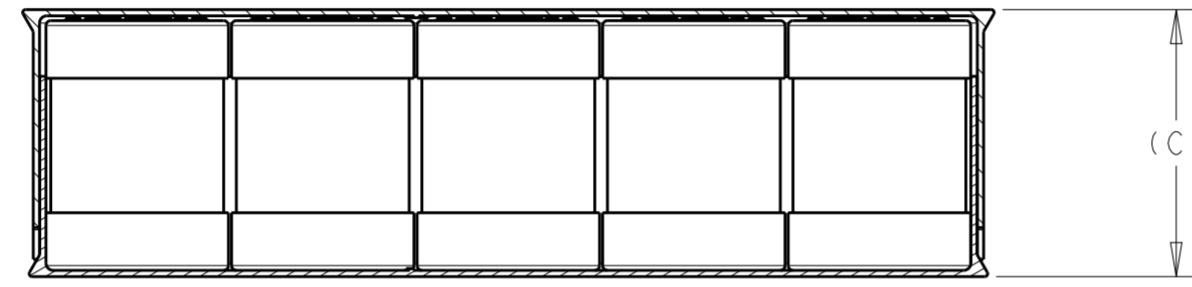
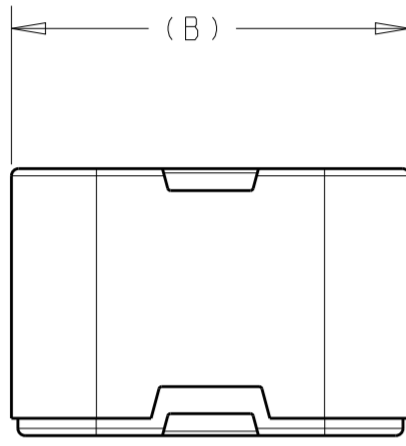


THIS DRAWING IS UNPUBLISHED. RELEASED FOR PUBLICATION 20  
 © COPYRIGHT 20 BY - ALL RIGHTS RESERVED.

REVISIONS				
P	LTR	DESCRIPTION	DATE	APVD
A		INITIAL REL. PER LC20-0072-17	19JUN2017	JG BJ

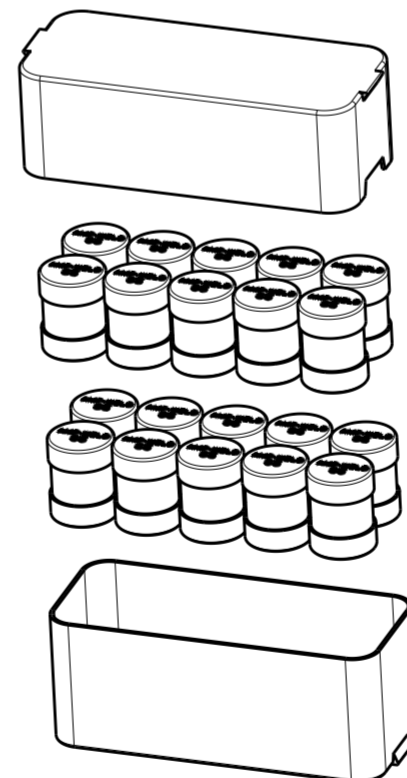
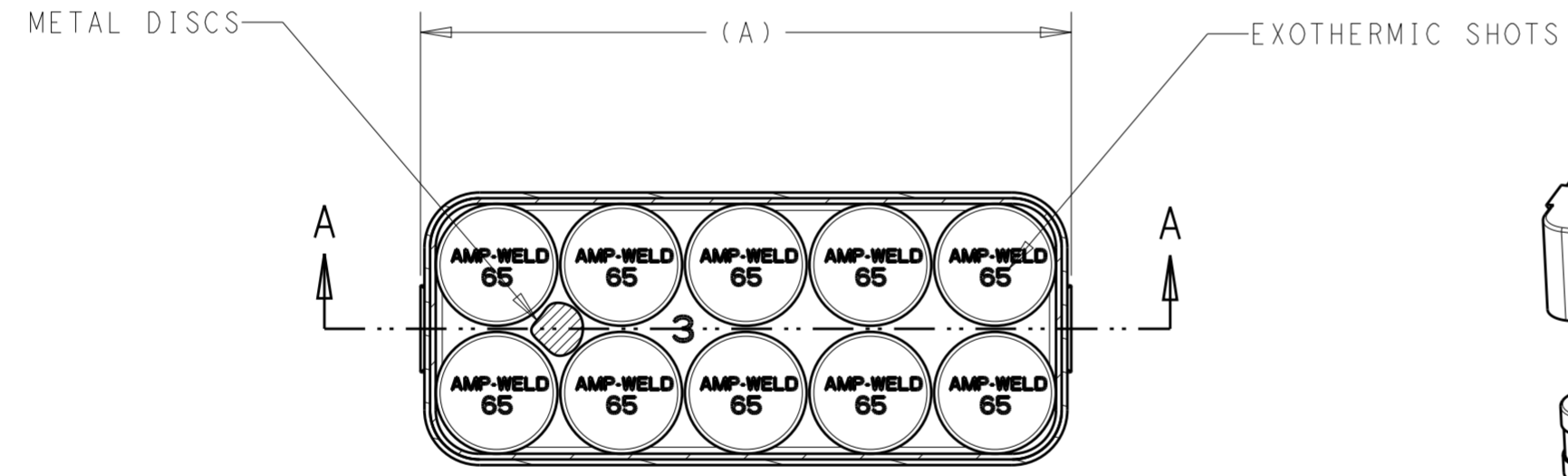


1. EACH EXOTHERMIC SHOT CONTAINS WELD METAL AND STARTER POWDER.
2. ALL DIMENSIONS ARE FOR REFERENCE ONLY.

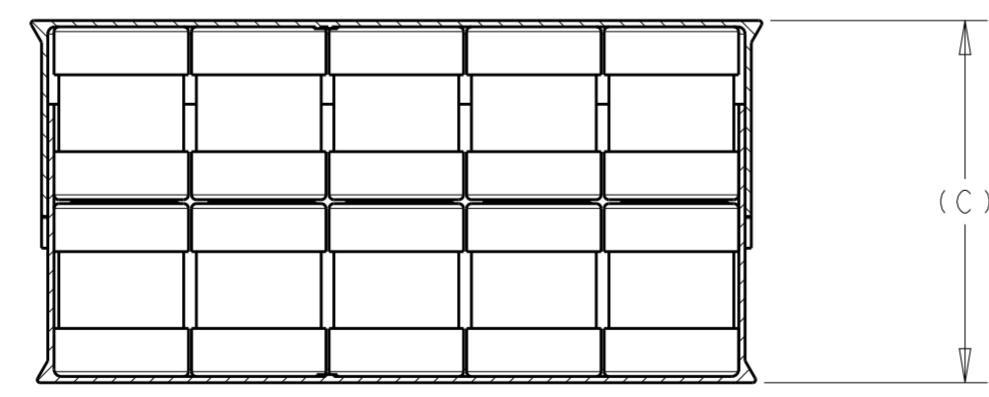
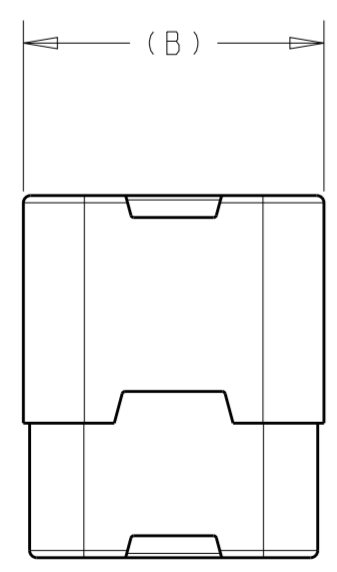


SECTION A-A

SKETCH REFERS TO P/N'S: 2182592-5 TO 2182592-9



C	B	A	EXOTHERMIC SHOTS PER BOX	CATALOG NO.	PART NO.
3.3	4.2	10.1	10	250 WM	2182587-9
2.7				200 WM	2182587-8
2.2				150 WM	2182587-7
3.1	3.1	7.5	20	115 WM	2182587-6
2.4				90 WM	2182587-5
3.7				65 WM	2182587-4
				45 WM	2182587-3
				32 WM	2182587-2
			25 WM	2182587-1	



SECTION A-A

SKETCH REFERS TO P/N'S: 2182592-1 TO 2182592-4

THIS DRAWING IS A CONTROLLED DOCUMENT.

DWN	J. GUPPY	19JUN2017
CHK	C. STIDHAM	23JUN2017
APVD	B. JOHNSON	26JUN2017

TE Connectivity

NAME: EXOTHERMIC SHOT ASSEMBLY, WM SIZES 25-250

SIZE	CAGE CODE	DRAWING NO.	RESTRICTED TO
A200779	C-2182587		-

CUSTOMER DRAWING SCALE NTS SHEET 1 OF 1 REV A