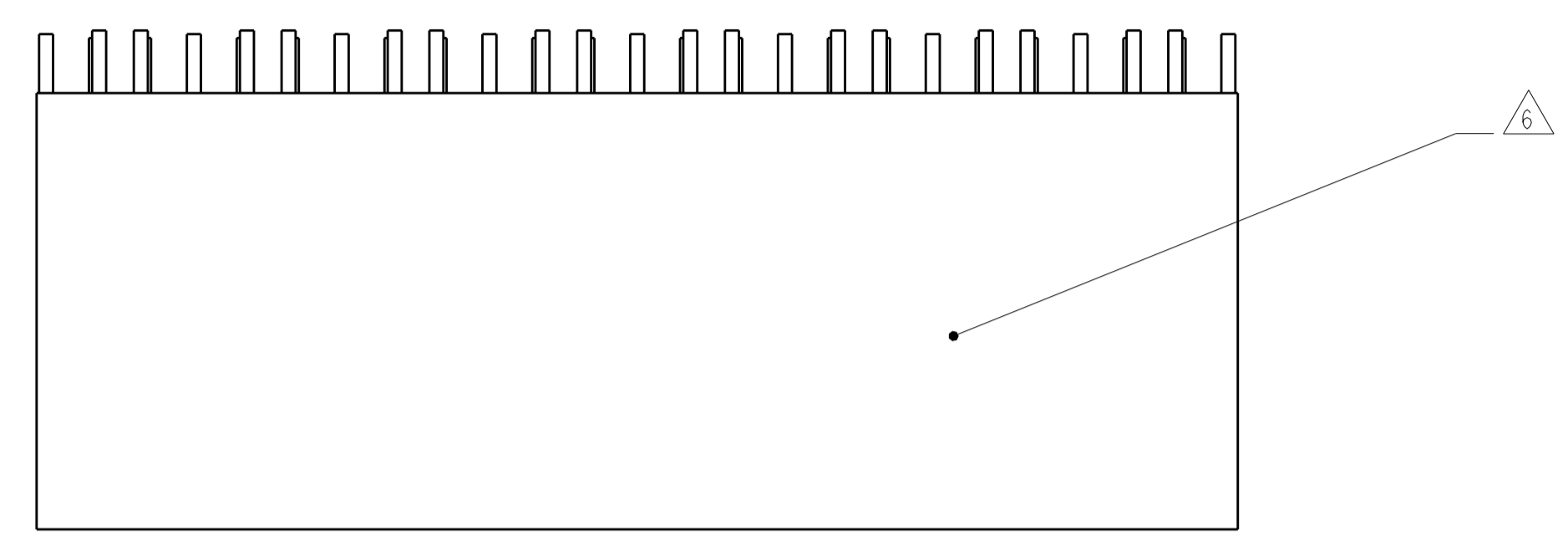
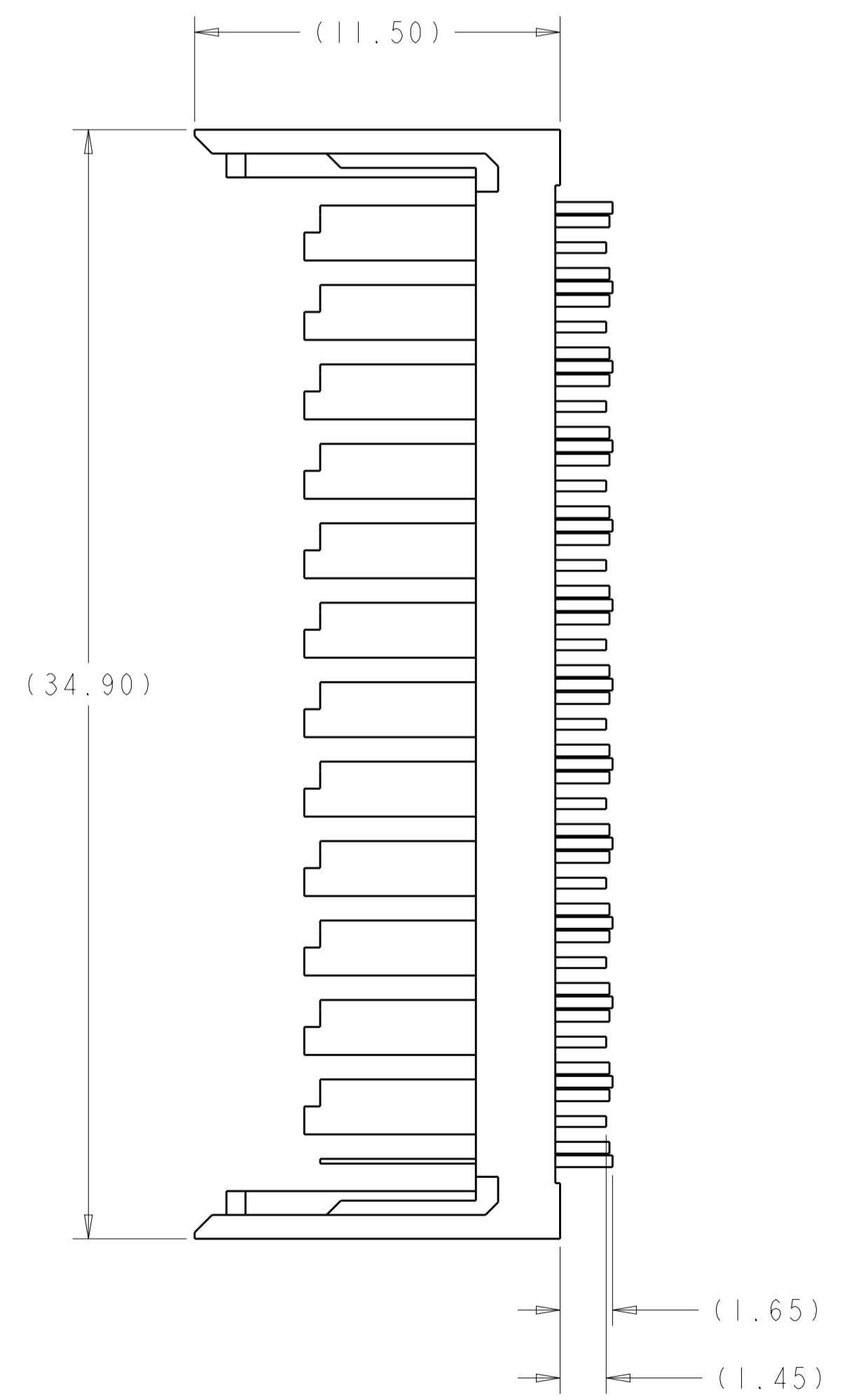
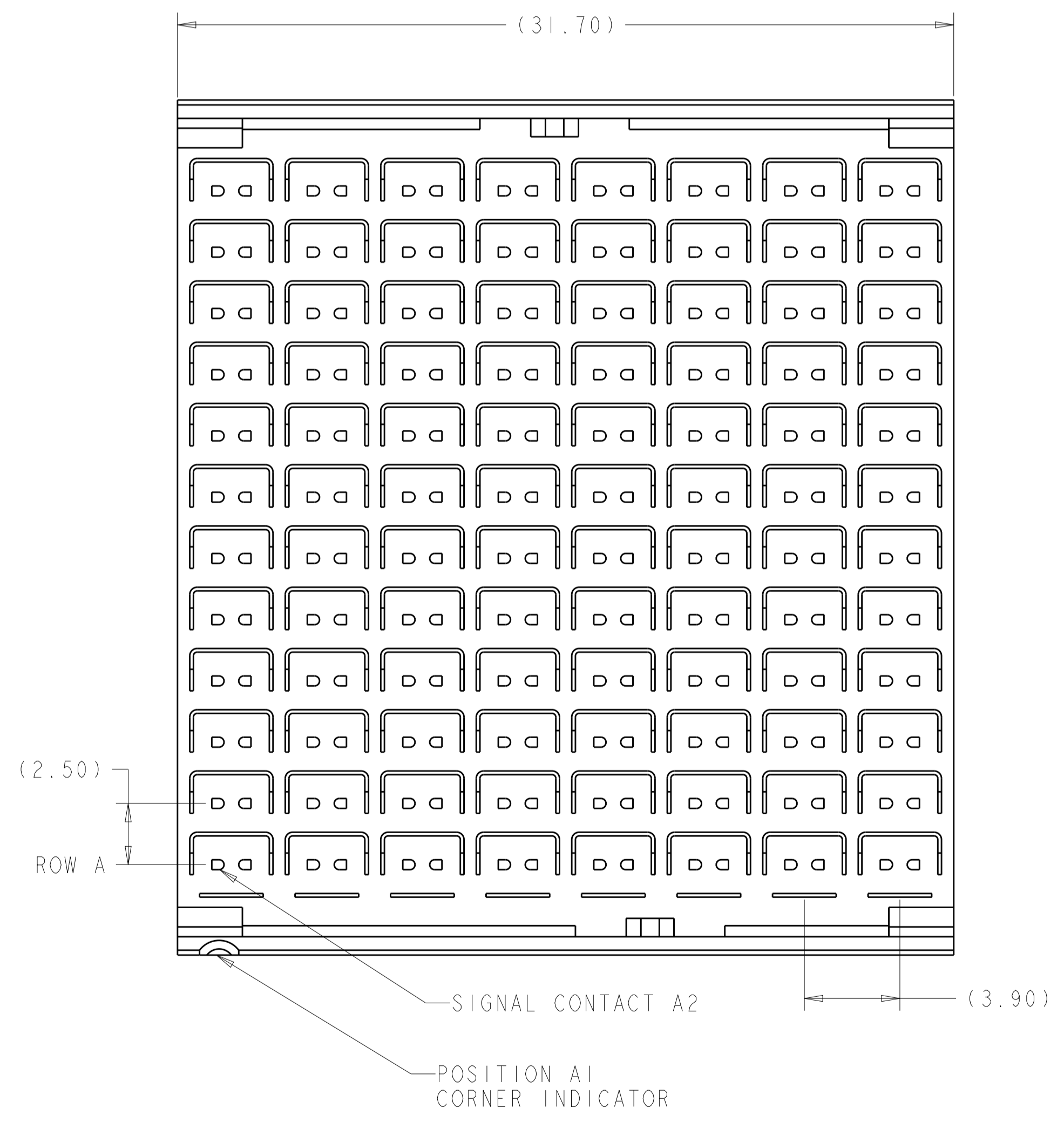


REVISIONS				
P.	LTN	DESCRIPTION	DATE	APVD
A		REVISED PER ECO-16-000464	09MAR2016	AP RP
B		REVISED PER ECO-17-003153	14MAR2017	AP RP
C		REVISED PER ECO-19-004494	25MAR2019	AP RP



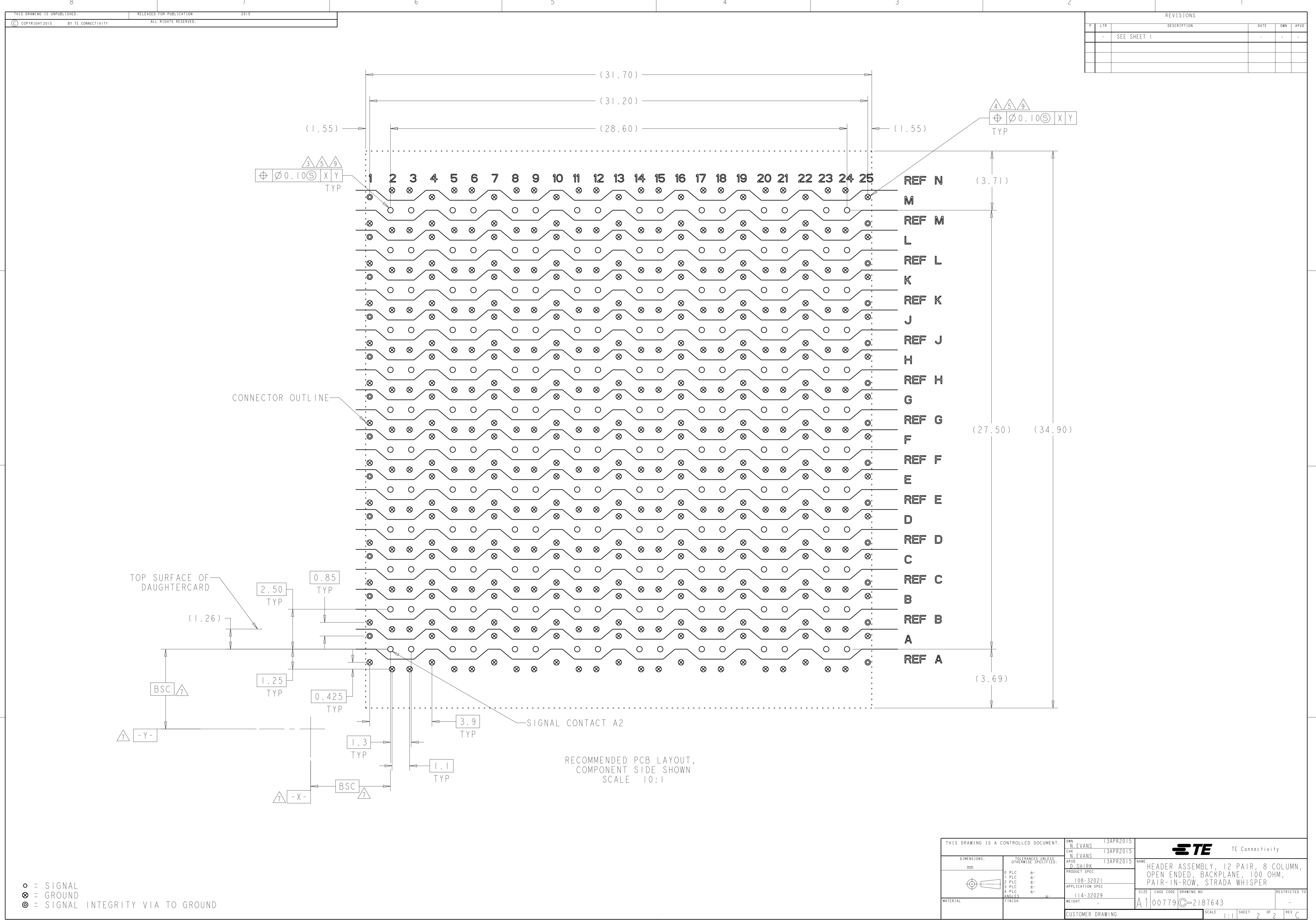
- ⚠ MATERIAL:
HOUSING: THERMOPLASTIC, UL 94V-0, BLACK
CONTACTS AND SHIELDS: COPPER ALLOY
- ⚠ FINISH:
- CONFORMS TO THE REQUIREMENTS OF TE PRODUCT SPECIFICATION 108-32021 BASED ON TELCORDIA GR-1217-CORE FOR SYSTEM QUALITY LEVEL III, APPLICATIONS IN CONTROLLED ENVIRONMENTS (CENTRAL OFFICE).
- COMPLIANT PIN AREA: 0.5µm MIN MATTE TIN.
- ⚠ SIGNAL PLATED THRU HOLE REQUIREMENTS:
FINISHED HOLE = $\varnothing 0.34 \pm 0.05$
HOLE SIZE PRIOR TO PLATING = $\varnothing 0.420 \pm 0.025$
COPPER THICKNESS = 0.025 MIN
IMMERSION TIN IF APPLICABLE = 0.00095 REF
- ⚠ GROUND AND SI VIA PLATED THRU HOLE REQUIREMENTS:
FINISHED HOLE = $\varnothing 0.37 \pm 0.05$
HOLE SIZE PRIOR TO PLATING = $\varnothing 0.450 \pm 0.025$
COPPER THICKNESS = 0.025 MIN
IMMERSION TIN IF APPLICABLE = 0.00095 REF
- ⚠ PTH DIMENSIONS APPLY TO THE TOP 1.00mm OF THE PCB THICKNESS FROM THE CONNECTOR MOUNTING SIDE.
- ⚠ CONNECTOR MARKED WITH PART NUMBER, DATE CODE, AND "100 OHM" IN APPROXIMATE AREA SHOWN.
- ⚠ DATUMS AND BASIC DIMENSIONS ESTABLISHED BY CUSTOMER.
- 8. CONTACT PRODUCT ENGINEERING FOR LAYOUTS WHEN STACKING CONNECTORS.
- ⚠ APPLIES TO FINISHED HOLE DIAMETER.
- ⚠ PACKAGED IN TRAYS.



⚠	2187643-2
-	2187643-1
REMARKS	PART NO

THIS DRAWING IS A CONTROLLED DOCUMENT.		OWN: N. EVANS 13APR2015	
DIMENSIONS: mm		CHK: N. EVANS 13APR2015	
TOLERANCES UNLESS OTHERWISE SPECIFIED:		APVD: D. SHIRK 13APR2015	
0 PLC ± 1 PLC ± 2 PLC ± 3 PLC ± 4 PLC ± ANGLES ± FINISH ±		NAME: HEADER ASSEMBLY, 12 PAIR, 8 COLUMN, OPEN ENDED, BACKPLANE, 100 OHM, PAIR-IN-ROW, STRADA WHISPER PRODUCT SPEC: 108-32021 APPLICATION SPEC: 114-32029 WEIGHT: - CUSTOMER DRAWING	
MATERIAL: ⚠		FINISH: ⚠	SIZE: A1 CAGE CODE: 00779 DRAWING NO: C=2187643 SCALE: 6:1 SHEET: 1 OF 2 REV: C

REVISIONS				
P.	LTN	DESCRIPTION	DATE	APP'D
-	-	SEE SHEET 1	-	-



○ = SIGNAL
 ⊗ = GROUND
 ⊙ = SIGNAL INTEGRITY VIA TO GROUND

RECOMMENDED PCB LAYOUT,
 COMPONENT SIDE SHOWN
 SCALE 10:1

THIS DRAWING IS A CONTROLLED DOCUMENT.		DWN: N. EVANS 13APR2015 CHK: N. EVANS 13APR2015 APVD: D. SHIRK 13APR2015	TE Connectivity
DIMENSIONS: mm	TOLERANCES UNLESS OTHERWISE SPECIFIED: 0 PLC ± 1 PLC ± 2 PLC ± 3 PLC ± 4 PLC ± ANGLES ±	NAME: HEADER ASSEMBLY, 12 PAIR, 8 COLUMN, OPEN ENDED, BACKPLANE, 100 OHM, PAIR-IN-ROW, STRADA WHISPER PRODUCT SPEC: 108-32021 APPLICATION SPEC: 114-32029 WEIGHT: - MATERIAL: - FINISH: -	
CUSTOMER DRAWING		SIZE: A1 CAGE CODE: 00779 DRAWING NO: C=2187643	RESTRICTED TO: - SCALE: 1:1 SHEET: 2 OF 2 REV: C