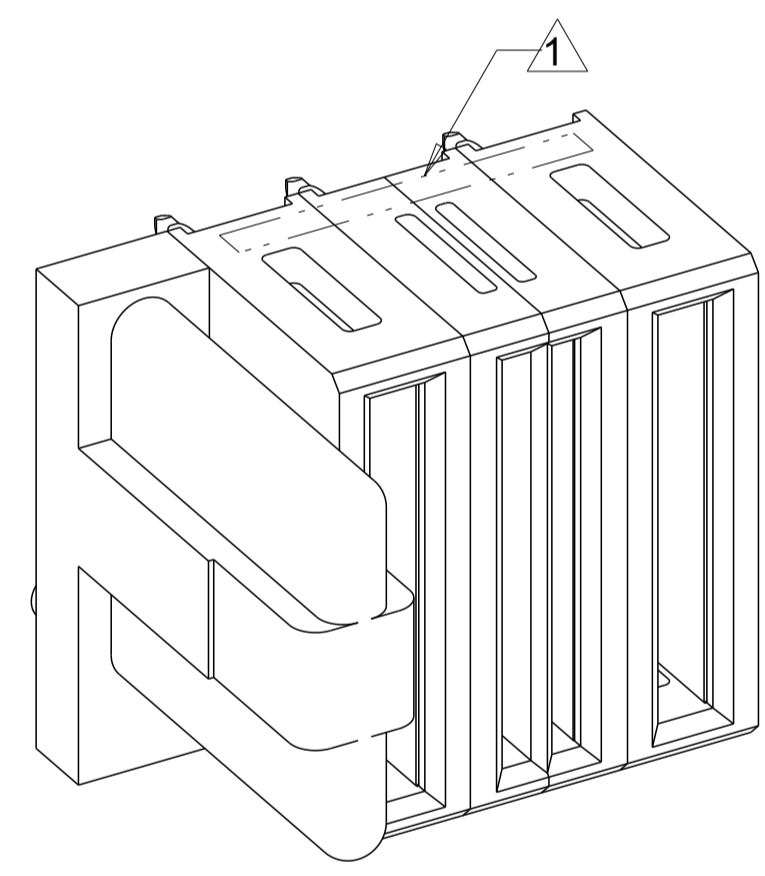
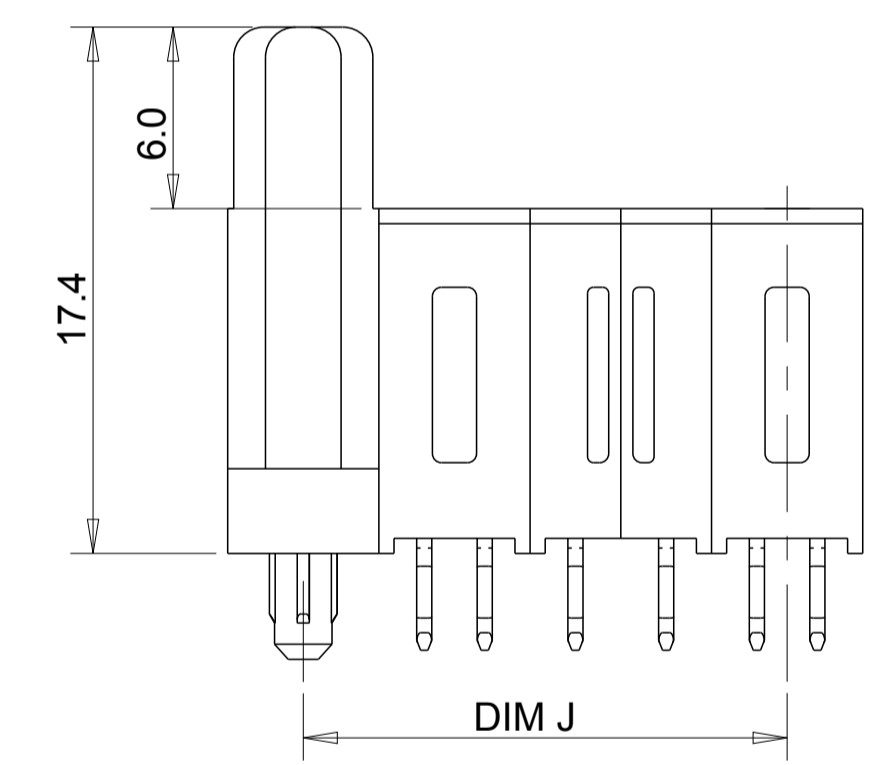
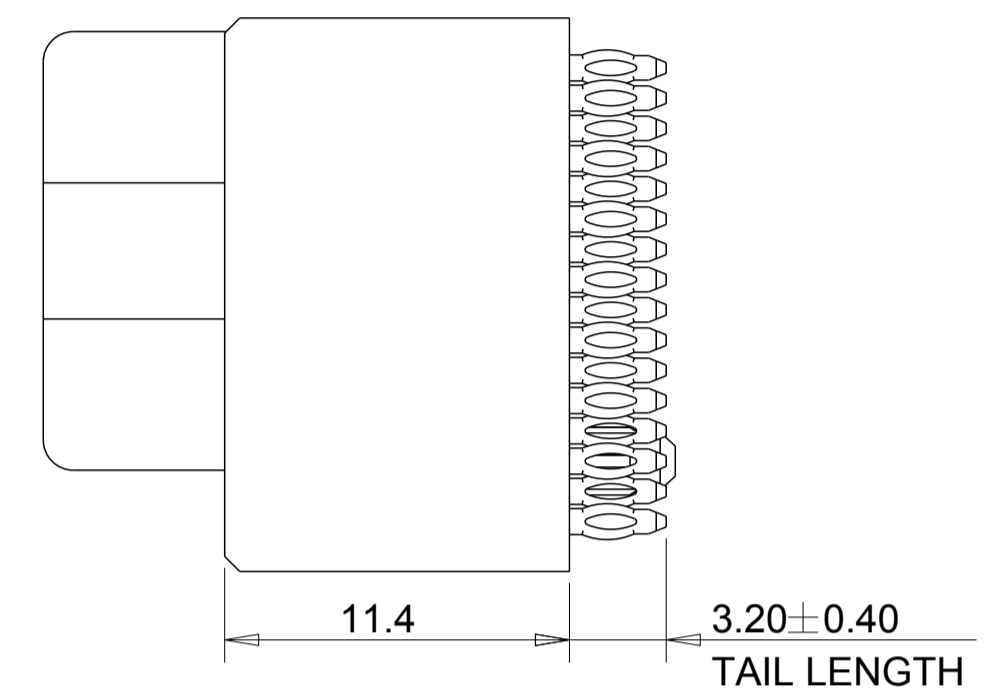
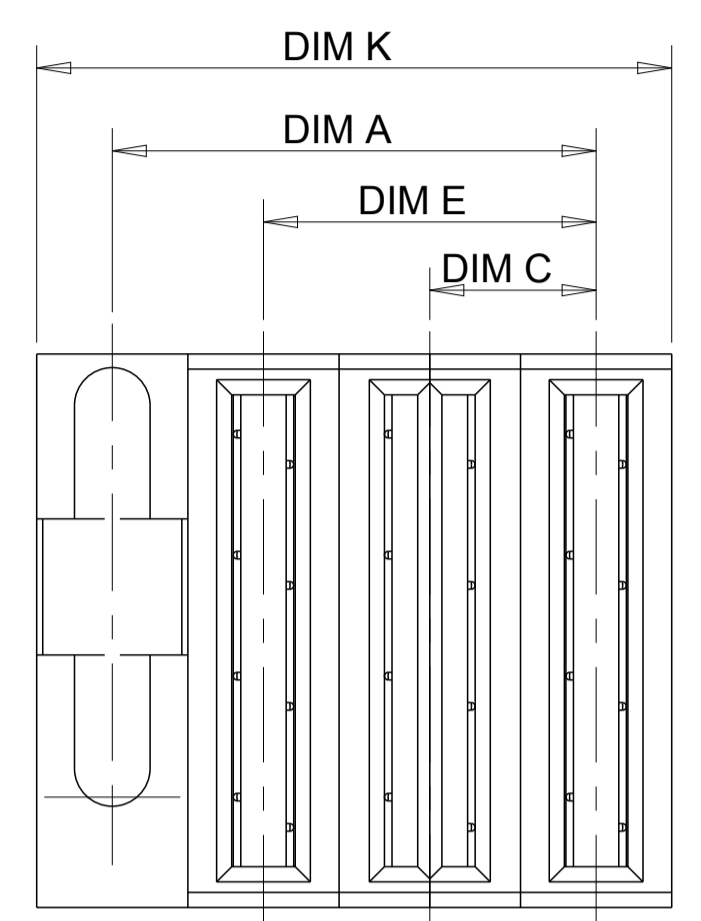


LOC		DIST		REVISIONS			
P	LTR	DESCRIPTION	DATE	DWN	APVD		
1		PROPOSAL DRAWING	07NOV2016	TZ	SZ		

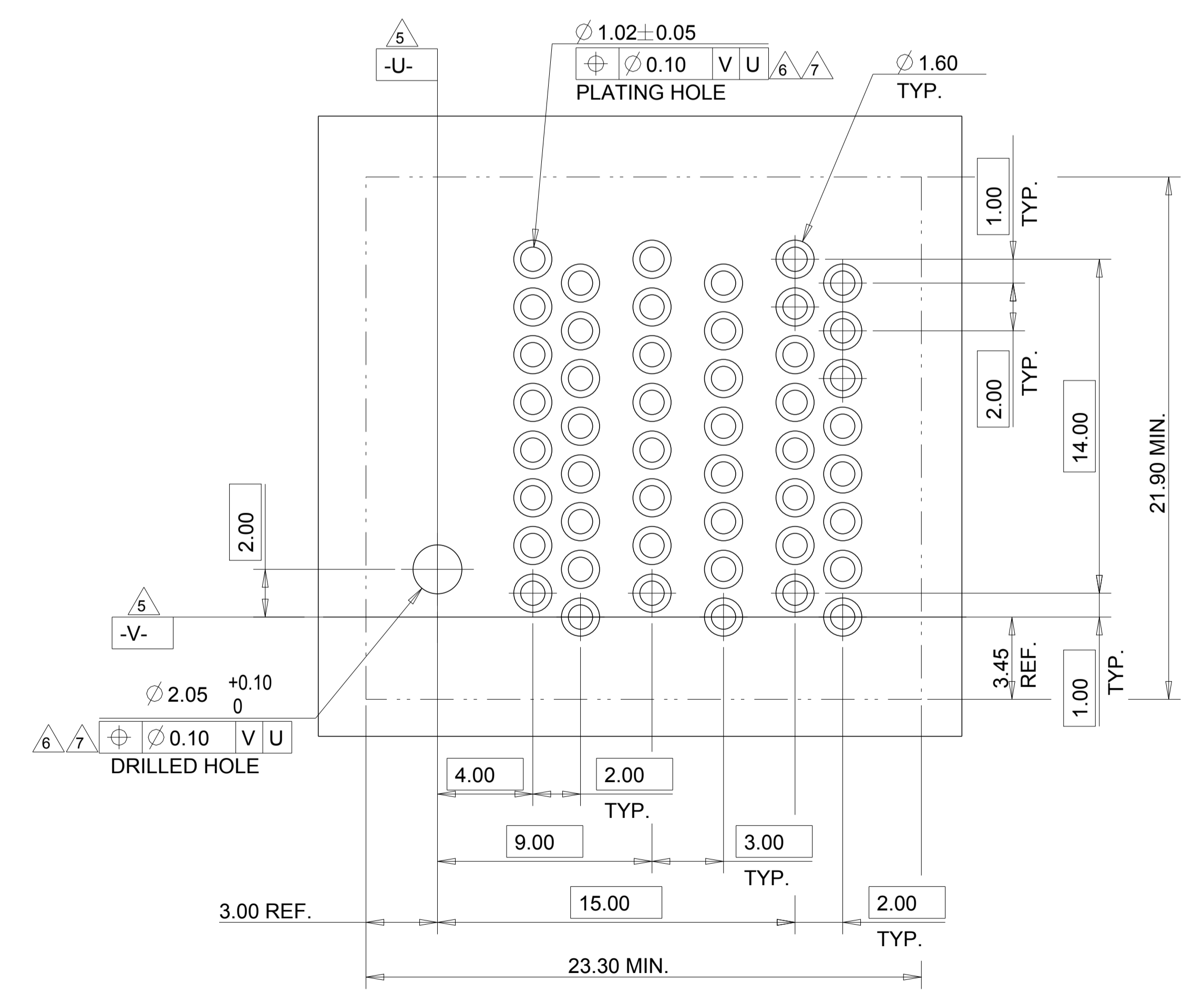


PROPOSED DESIGN
 PRODUCT NUMBER WILL BE
 ASSIGNED WHEN RELEASED
 DESIGN IS SUBJECT TO
 CHANGE WITHOUT NOTICE

PART NUMBER	GUIDE	POWER			
		P2	M2	M1	P1
2204425-1		PM	MM	MM	PM
IP+2MP+1P+G					

NOTES, UNLESS OTHERWISE SPECIFIED:

1. "TE", PART NUMBER AND DATE CODE TO BE MARKED IN AREA SHOWN.
2. MATERIAL:
 HOUSING - GLASS FILLED HIGH TEMP THERMO PLASTIC,
 COLOR: BLACK, UL94 V-0.
 SIGNAL CONTACT - HIGH CONDUCTIVITY COPPER ALLOY.
 POWER CONTACT - HIGH CONDUCTIVITY COPPER ALLOY.
3. CONTACT PLATING:
 MATING AREA - NOBLE METAL OVERALL NICKEL
 TAIL SIDE AREA - MATTE TIN OVERALL NICKEL.
4. MECHANICAL CONNECTOR KEEP OUT ZONE.
5. DATUM AND BASIC DIMENSIONS ESTABLISHED BY CUSTOMER.
6. PCB - ALL HOLE DIAMETERS ARE FINISHED HOLE SIZES.
7. PCB HOLE:
 POWER - 1.15 ± 0.025 MM DRILLED HOLES SIZE PLATING WITH 0.0076 MM MIN.
 Sn OVER 0.025~0.076 MM Cu PLATING TO ACHIEVE A 1.02 MM DIA. HOLE.
 SIGNAL - 0.835 ± 0.025 MM DRILLED HOLES SIZE PLATING WITH 0.0076 MM MIN.
 Sn OVER 0.025~0.076 MM Cu PLATING TO ACHIEVE A 0.72 MM DIA. HOLE.
 CONFIGURATION "S+LP+P+S" REFER TO SHEET 2



MP CONTACT MFBL PRESS FIT	MM
POWER CONTACT MFBL PRESS FIT	PM
DESCRIPTION	IDENTIFIER

16.00	16.00	5.50	11.00	21.00	1P+2MP+1P+G	2204425-1
DIM A	DIM J	DIM C	DIM E	DIM K	DESCRIPTION	PART NUMBER

THIS DRAWING IS A CONTROLLED DOCUMENT.

DWN: THOMAS ZHAO 07NOV2016
 CHK: SUNY ZHAO 07NOV2016
 APVD: SUNY ZHAO 07NOV2016

NAME: CUSTOMER DRAWING PRESS FIT VERTICAL RECEPTACLE S+P+MP+G MULTI-BEAM HD CONNECTOR

SIZE: A1
 SCALE: 4:1
 SHEET: 1 OF 1
 REV: 1