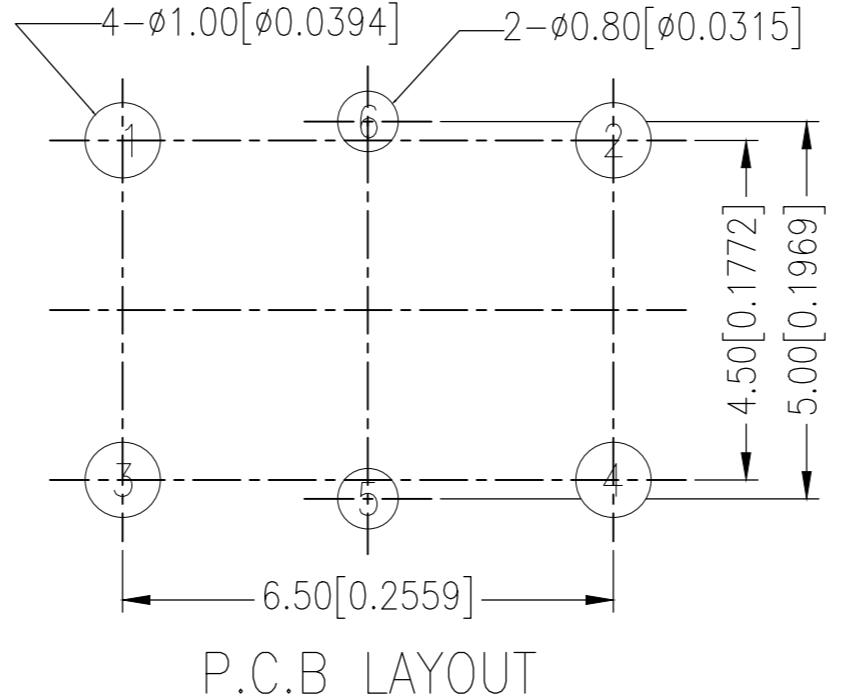
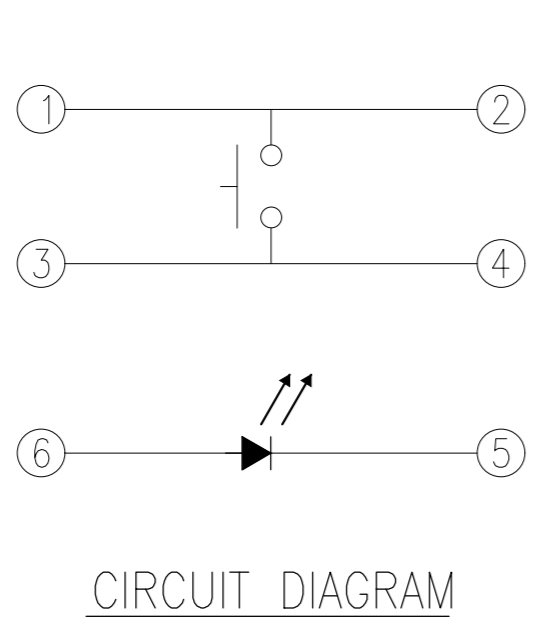
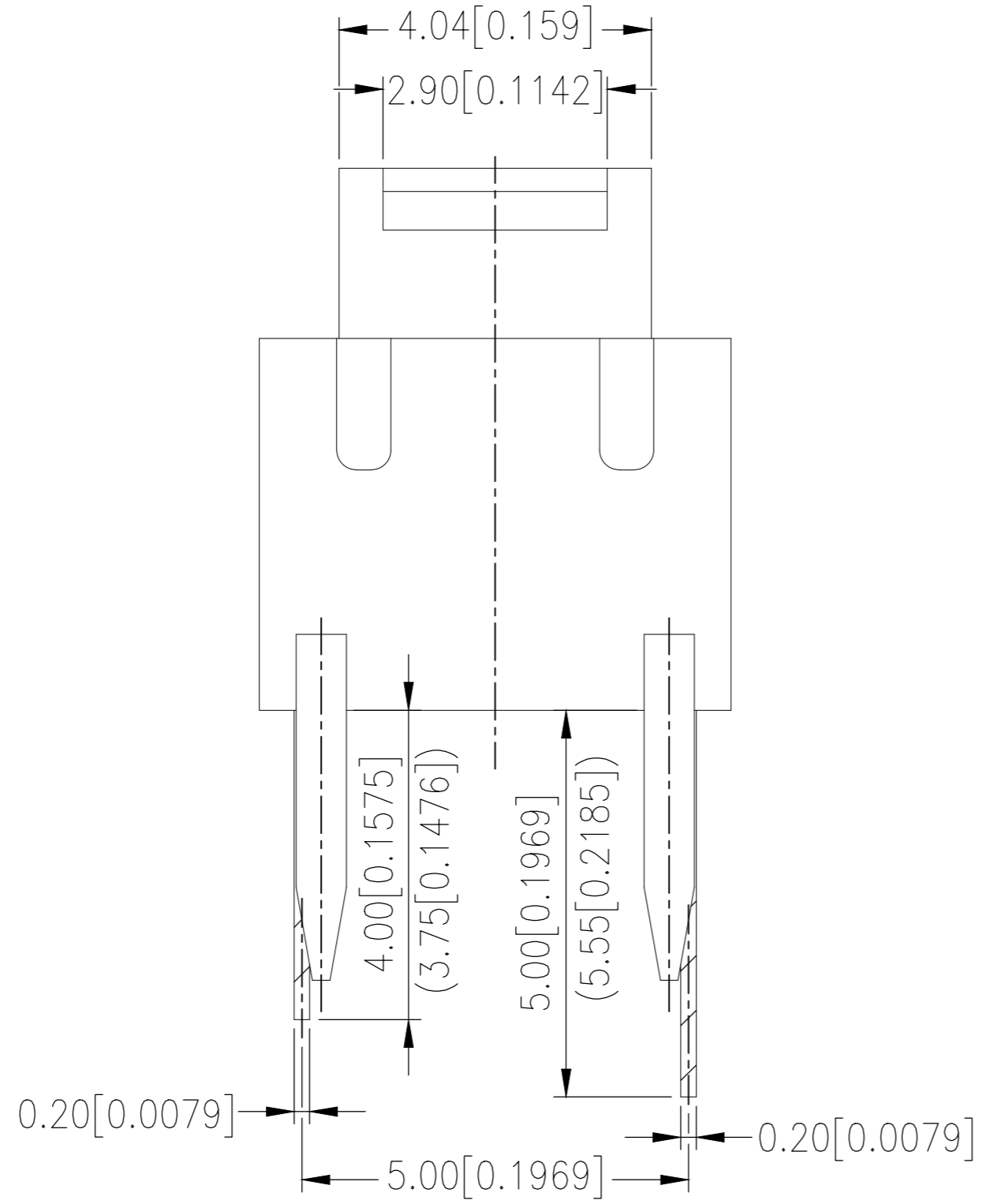


THIS DRAWING IS UNPUBLISHED. RELEASED FOR PUBLICATION  
 © COPYRIGHT - By - ALL RIGHTS RESERVED.

REVISIONS					
P	LTR	DESCRIPTION	DATE	DWN	APVD
A1		REVISED PER ECR-16-015883	16NOV2016	RK	SS
A2		REVISED PER ECR-16-017884	21DEC2016	RK	SS
B		REVISED PER ECR-18-009447	16OCT2018	SR	PO



SPECIFICATIONS:

MATERIALS

CASE: HIGH TEMP THERMOPLASTIC (UL94-V0), BLACK  
 ACTUATOR: HIGH TEMP THERMOPLASTIC PA9T (UL94-V0)  
 MOXING CONTACT: STAINLESS STEEL, AG PLATED  
 FIXED CONTACT/TERMINAL: BRASS, AG PLATED

ELECTRICAL

CONTACT RATING: 50 mA @ 12 VDC  
 INITIAL CONTACT RESISTANCE: 100 MILLIOHMS MAX  
 INSULATION RESISTANCE: 100 MEGAOHM MIN @ 500 VDC  
 DIELECTRIC STRENGTH: 250 VAC FOR 1 MINUTE

MECHANICAL

ACTION FORCE: SEE TABLE  
 ACTION TRAVEL: 0.20 MM +/- 0.10 MM  
 ACTION CYCLES: FOR ACTION FORCE OF 100GF OR 160GF,  
 500,000 ACTION CYCLES MIN; FOR ACTION FORCE OF 260GF  
 OF 520GF, 200,000 ACTION CYCLES MIN

ENVIRONMENTAL

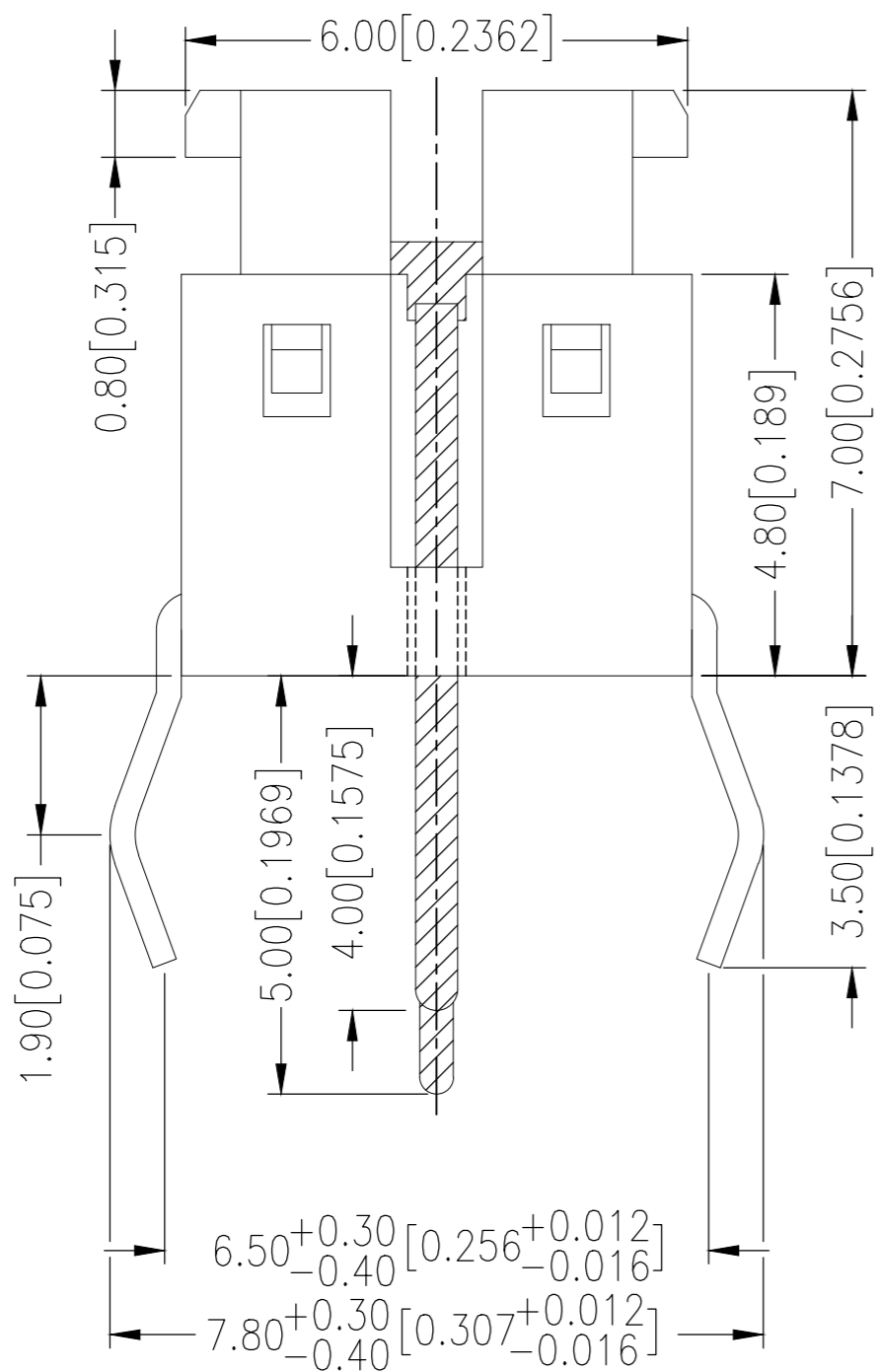
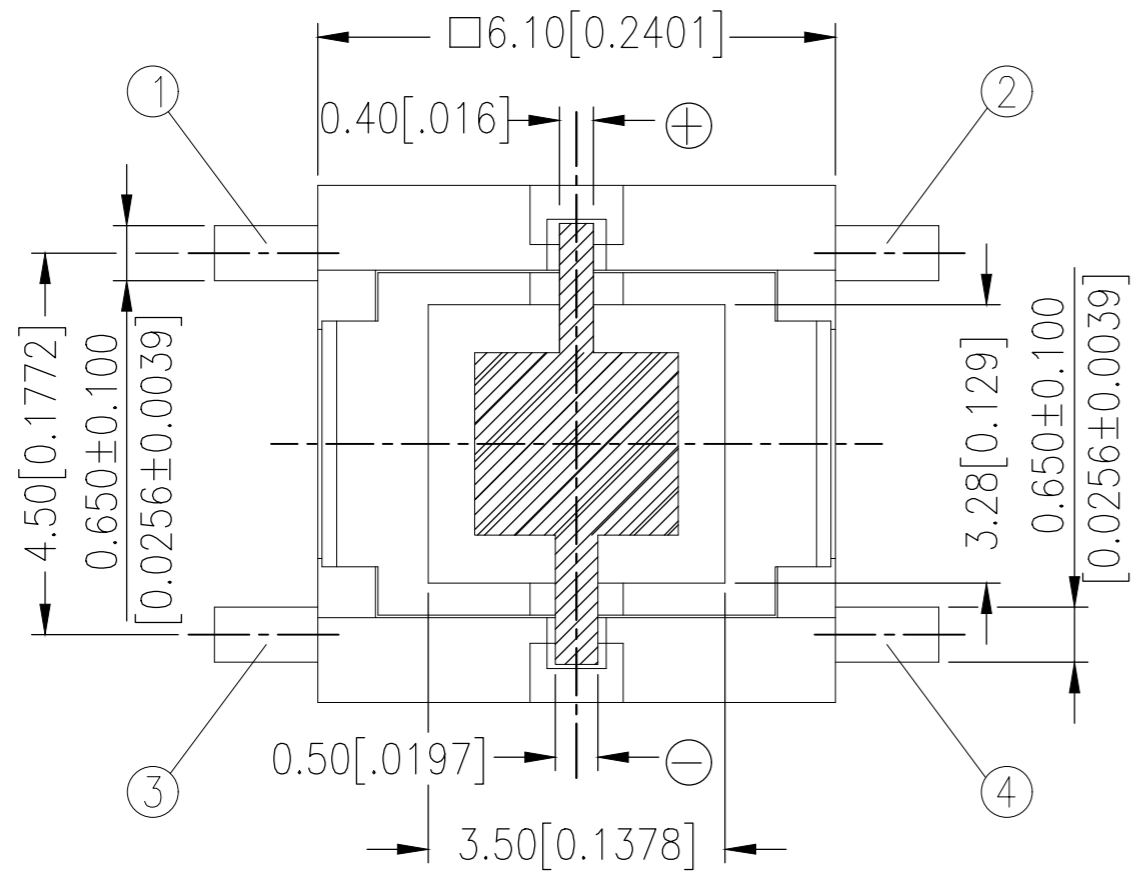
OPERATING TEMPERATURE: -25°C TO +70°C  
 STORAGE TEMPERATURE: -30°C TO +80°C  
 STORAGE HUMIDITY: 85% MAX  
 VIBRATION: PER MIL-STD-202F, METHOD 201A  
 THERMAL SHOCK: PER MIL-STD-202F, METHOD 213B, CONDITION A  
 RESISTANCE TO SOLDER HEAT: WAVE SOLDERING TEMPERATURE 260°C  
 +/-5°C PER 109-202, CONDITION C

1. ALL MATERIALS AND FINISHES SHALL COMPLY WITH EU DIRECTIVE 2002/95/EC OF 27JAN2003 (ROHS).
2. LOW INTENSITY LED PARTS SHOWN ON PAGE 2.
3. HIGH INTENSITY LED PARTS SHOWN ON PAGE 3.
4. PARTS TO BE PACKAGED IN TUBES AND CARTON. TUBE AND CARTON TO INCLUDE CAUTION STATIC SENSITIVE DEVICE LABELS.
5. IF THIS SWITCH IS USED. WITH A CAP, THE CAP SHALL BE INSTALLED AFTER SOLDERING THE SWITCH TO PCB.

THIS DRAWING IS A CONTROLLED DOCUMENT.		DWN RAVI.S 16MAR2016	TE Connectivity		
DIMENSIONS: mm		CHK R. Hill 16MAR2016			
TOLERANCES UNLESS OTHERWISE SPECIFIED:		APVD R. Hill 16MAR2016	NAME ILLUMINATED TACTILE SWITCH THROUGH-HOLE MOUNTED		
0 PLC ± - 1 PLC ± - 2 PLC ± +/- 0.30 3 PLC ± - 4 PLC ± - ANGLES ± -		PRODUCT SPEC APPLICATION SPEC	SIZE A2	CAGE CODE 00779	DRAWING NO C=2213818
MATERIAL -		FINISH -	WEIGHT	RESTRICTED TO -	SCALE 1:1
CUSTOMER DRAWING			SHEET 1 of 3	REV B	

THIS DRAWING IS UNPUBLISHED. RELEASED FOR PUBLICATION  
 © COPYRIGHT - By - ALL RIGHTS RESERVED.

REVISIONS					
P	LTR	DESCRIPTION	DATE	DWN	APVD
-	-	SEE SHEET 1	-	-	-



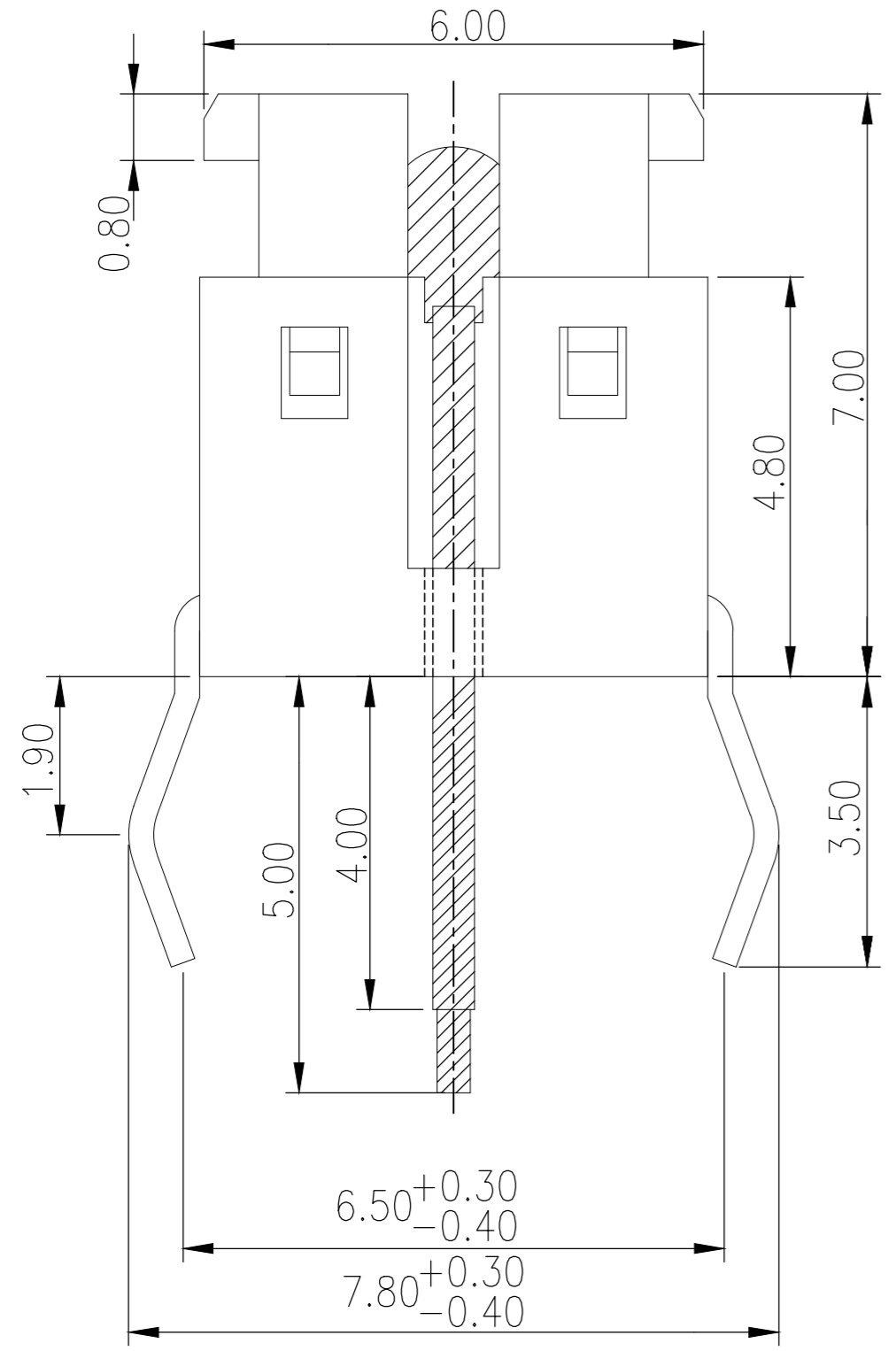
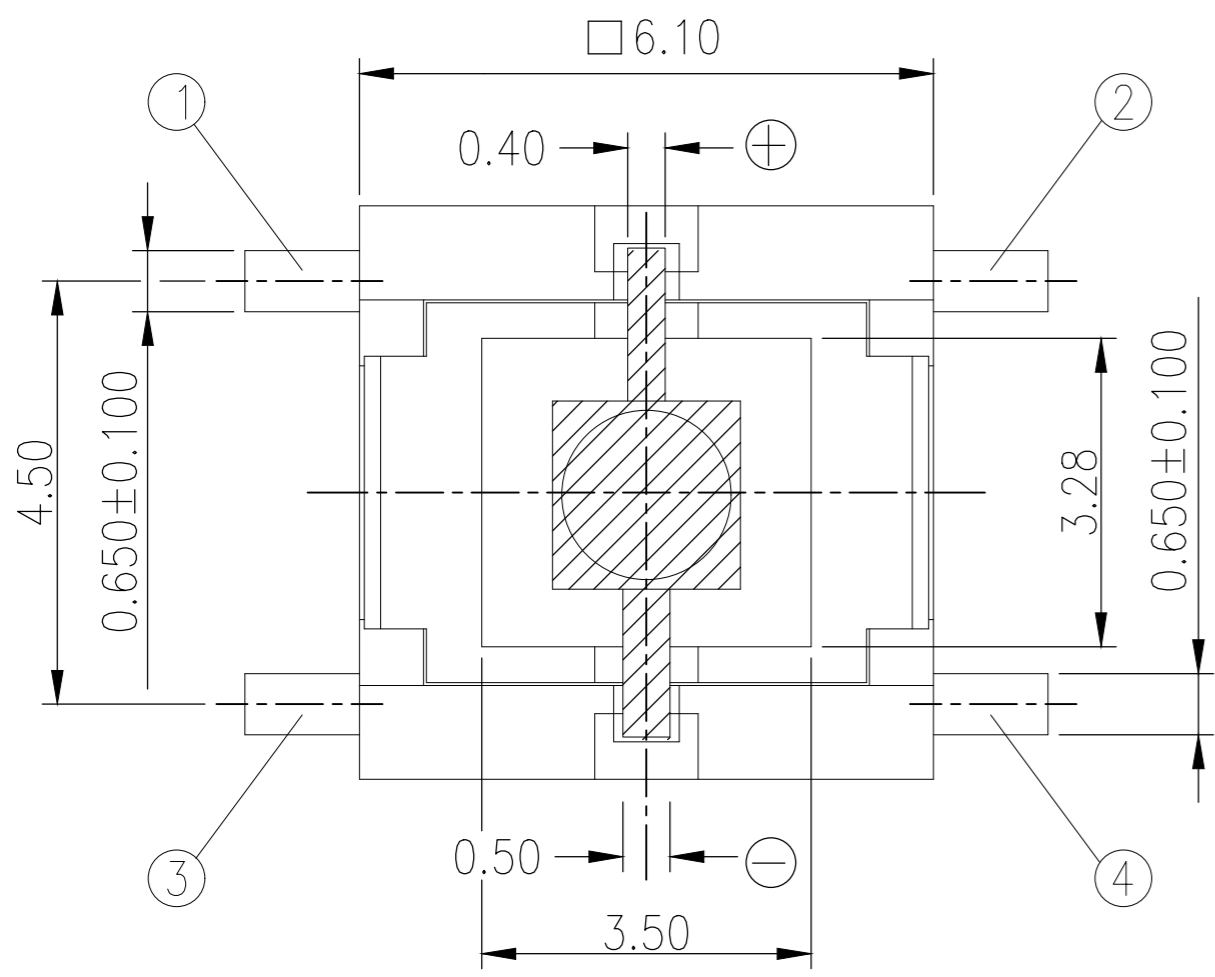
LOW INTENSITY LED PROFILE

520	COLD WHITE	FSMIJ65AW04	5-2213818-6
520	RED	FSMIJ65AR04	5-2213818-5
520	RED ORANGE	FSMIJ65A004	5-2213818-4
520	SOFT ORANGE	FSMIJ65AA04	5-2213818-3
520	YELLOW	FSMIJ65AY04	5-2213818-2
520	YELLOW GREEN	FSMIJ65AG04	5-2213818-1
520	PURE GREEN	FSMIJ65APG04	5-2213818-0
520	BLUE	FSMIJ65AB04	4-2213818-9
260	COLD WHITE	FSMIJ63AW04	4-2213818-0
260	RED	FSMIJ63AR04	3-2213818-9
260	RED ORANGE	FSMIJ63A004	3-2213818-8
260	SOFT ORANGE	FSMIJ63AA04	3-2213818-7
260	YELLOW	FSMIJ63AY04	3-2213818-6
260	YELLOW GREEN	FSMIJ63AG04	3-2213818-5
260	PURE GREEN	FSMIJ63APG04	3-2213818-4
260	BLUE	FSMIJ63AB04	3-2213818-3
160	COLD WHITE	FSMIJ62AW04	2-2213818-4
160	RED	FSMIJ62AR04	2-2213818-3
160	RED ORANGE	FSMIJ62A004	2-2213818-2
160	SOFT ORANGE	FSMIJ62AA04	2-2213818-1
160	YELLOW	FSMIJ62AY04	2-2213818-0
160	YELLOW GREEN	FSMIJ62AG04	1-2213818-9
160	PURE GREEN	FSMIJ62APG04	1-2213818-8
160	BLUE	FSMIJ62AB04	1-2213818-7
100	COLD WHITE	FSMIJ61AW04	2213818-8
100	RED	FSMIJ61AR04	2213818-7
100	RED ORANGE	FSMIJ61A004	2213818-6
100	SOFT ORANGE	FSMIJ61AA04	2213818-5
100	YELLOW	FSMIJ61AY04	2213818-4
100	YELLOW GREEN	FSMIJ61AG04	2213818-3
100	PURE GREEN	FSMIJ61APG04	2213818-2
100	BLUE	FSMIJ61AB04	2213818-1
OPERATING FORCE	LED COLOR	TE DESCRIPTIVE PART NUMBER	TE PART NUMBER

THIS DRAWING IS A CONTROLLED DOCUMENT.		DWN RAVI.S 16MAR2016		
DIMENSIONS: mm		CHK R. Hill 16MAR2016		
TOLERANCES UNLESS OTHERWISE SPECIFIED:		APVD R. Hill 16MAR2016	NAME	
0 PLC ± - 1 PLC ± - 2 PLC ± - 3 PLC ± - 4 PLC ± - ANGLES ± -		PRODUCT SPEC	ILLUMINATED TACTILE SWITCH THROUGH-HOLE MOUNTED	
MATERIAL		APPLICATION SPEC	SIZE A2	CAGE CODE 00779
FINISH		WEIGHT	DRAWING NO C=2213818	RESTRICTED TO
		CUSTOMER DRAWING	SCALE 1:1	SHEET 2 of 3
			REV B	

THIS DRAWING IS UNPUBLISHED. RELEASED FOR PUBLICATION  
 © COPYRIGHT - By - ALL RIGHTS RESERVED.

REVISIONS					
P	LTR	DESCRIPTION	DATE	DWN	APVD
-	-	SEE SHEET 1	-	-	-



HIGH INTENSITY LED PROFILE

520	COLD WHITE	FSMIJ65BW04	6-2213818-4
520	RED	FSMIJ65BR04	6-2213818-3
520	RED ORANGE	FSMIJ65B004	6-2213818-2
520	SOFT ORANGE	FSMIJ65BA04	6-2213818-1
520	YELLOW	FSMIJ65BY04	6-2213818-0
520	YELLOW GREEN	FSMIJ65BG04	5-2213818-9
520	PURE GREEN	FSMIJ65BPG04	5-2213818-8
520	BLUE	FSMIJ65BB04	5-2213818-7
260	COLD WHITE	FSMIJ63BW04	4-2213818-8
260	RED	FSMIJ63BR04	4-2213818-7
260	RED ORANGE	FSMIJ63B004	4-2213818-6
260	SOFT ORANGE	FSMIJ63BA04	4-2213818-5
260	YELLOW	FSMIJ63BY04	4-2213818-4
260	YELLOW GREEN	FSMIJ63BG04	4-2213818-3
260	PURE GREEN	FSMIJ63BPG04	4-2213818-2
260	BLUE	FSMIJ63BB04	4-2213818-1
160	COLD WHITE	FSMIJ62BW04	3-2213818-2
160	RED	FSMIJ62BR04	3-2213818-1
160	RED ORANGE	FSMIJ62B004	3-2213818-0
160	SOFT ORANGE	FSMIJ62BA04	2-2213818-9
160	YELLOW	FSMIJ62BY04	2-2213818-8
160	YELLOW GREEN	FSMIJ62BG04	2-2213818-7
160	PURE GREEN	FSMIJ62BPG04	2-2213818-6
160	BLUE	FSMIJ62BB04	2-2213818-5
100	COLD WHITE	FSMIJ61BW04	1-2213818-6
100	RED	FSMIJ61BR04	1-2213818-5
100	RED ORANGE	FSMIJ61B004	1-2213818-4
100	SOFT ORANGE	FSMIJ61BA04	1-2213818-3
100	YELLOW	FSMIJ61BY04	1-2213818-2
100	YELLOW GREEN	FSMIJ61BG04	1-2213818-1
100	PURE GREEN	FSMIJ61BPG04	1-2213818-0
100	BLUE	FSMIJ61BB04	2213818-9
OPERATING FORCE	LED COLOR	TE DESCRIPTIVE PART NUMBER	TE PART NUMBER

THIS DRAWING IS A CONTROLLED DOCUMENT.		DWN RAVI.S 16MAR2016	TE Connectivity	
DIMENSIONS: mm		CHK R. Hill 16MAR2016		
TOLERANCES UNLESS OTHERWISE SPECIFIED:		APVD R. Hill 16MAR2016	NAME ILLUMINATED TACTILE SWITCH THROUGH-HOLE MOUNTED	
0 PLC ± -	1 PLC ± -	PRODUCT SPEC	SIZE A2	CAGE CODE 00779
2 PLC ± +/- 0.30	3 PLC ± -	APPLICATION SPEC	DRAWING NO C=2213818	RESTRICTED TO -
4 PLC ± -	ANGLES ± -	WEIGHT	SCALE 1:1	SHEET 3 of 3
MATERIAL -	FINISH -	CUSTOMER DRAWING	REV B	