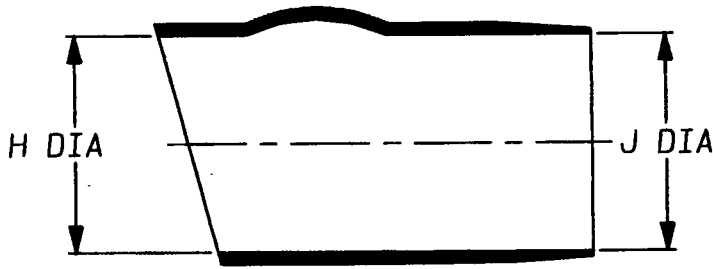
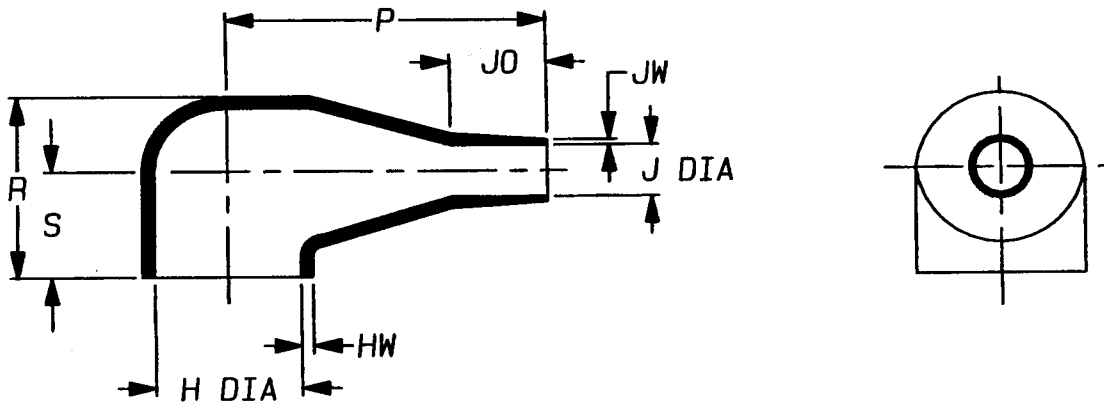


a) Part as supplied

222K342-\*G02



b) Part after unrestricted recovery



DIMENSIONS (in millimetres)

Part No.	H		J		P	R	S	JO	HW	JW
	Min	Max	Min	Max	±5%	±5%	±5%	±5%	±20%	±20%
	a	b	a	b	b	b	b	b	b	b
222K342-*G02	30	23.0	30	8.0	55	25	14	18	2.2	1.0
	#		#			#	#			

THIS IS AN OVEREXPANDED AND TRIMMED VARIANT  
 MODIFIED DIMENSIONS ARE SHOWN THUS: - #

Copyright (!)  
 Urheberrechte

The copyright in this drawing is the property of Raychem Ltd. The drawing is issued on condition that it is not copied, reproduced or disclosed to a third party, either in whole or in part without the prior written consent of Raychem Ltd.

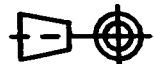
Drawn A.LILLEY. Checked *[Signature]* Issue 1 Date September 1998 Conforms to ISO Recommendations

3rd Angle Projection  
 Not to Scale

Approval  
 Design

MKTG

G.A. *[Signature]*



Iss.	Date	E.C.R. No.	Details of Change

### (Ordering Information)

222K342-x-G02/\*\*-0

— Adhesive Slash Number (if required see compatibility chart)  
 — Modification number  
 — Material Dash Number (see compatibility chart)  
 — Base Part Number

### (COMPATIBILITY CHART)

MATERIAL DASH NUMBER	MATERIAL DESCRIPTION	COATING SLASH NUMBER
-3	POLYOLEFIN, SEMI-RIGID	/42, /86
-4	POLYOLEFIN, FLEXIBLE	/42, /86
-25	ELASTOMER, FLUID RESISTANT	/86, /225

AS SUPPLIED DIMENSIONS ARE FOR UNCOATED PARTS,  
WHEN COATING IS ADDED, ENTRY DIAMETERS WILL REDUCE BY 1.5mm MAX.