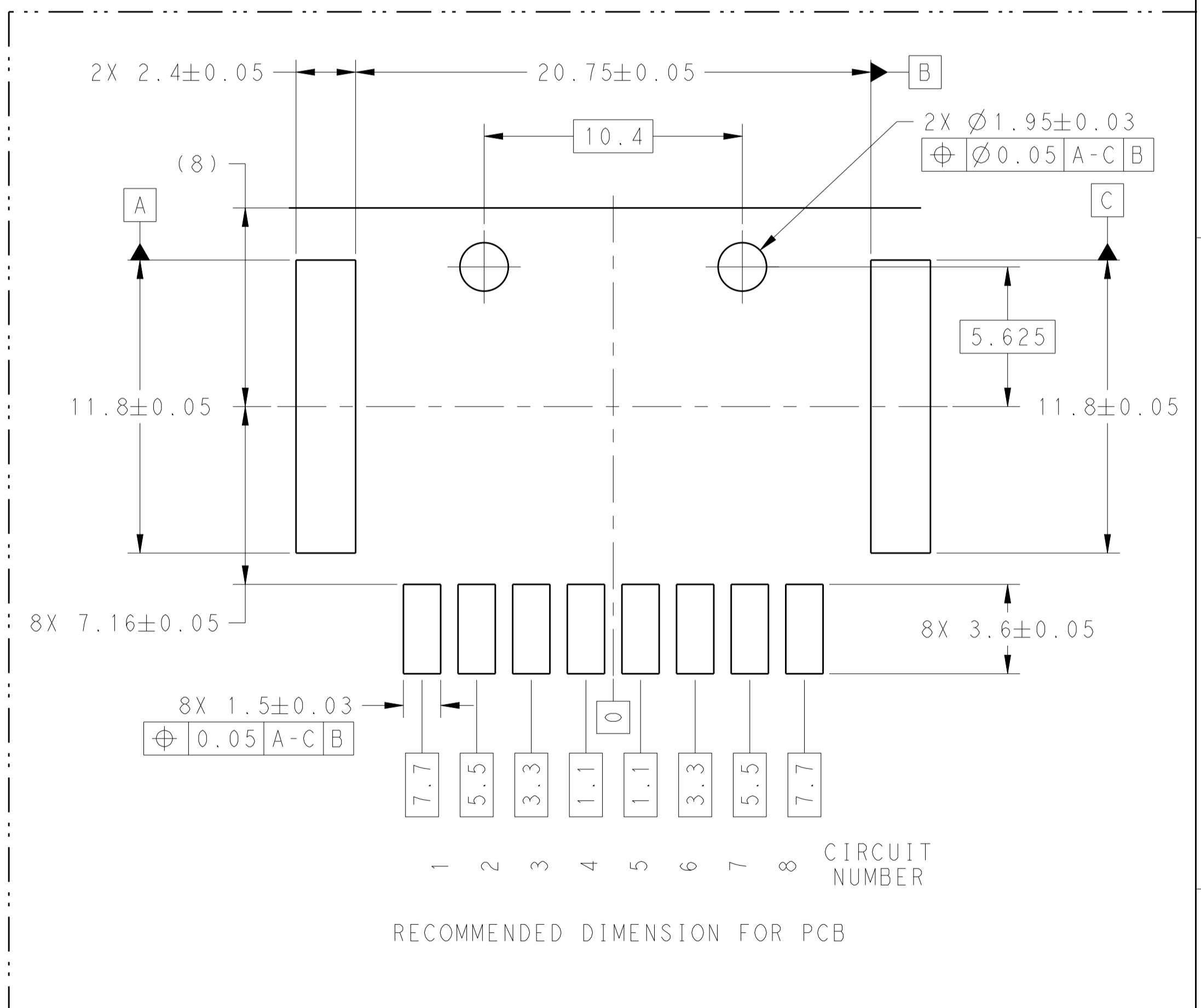
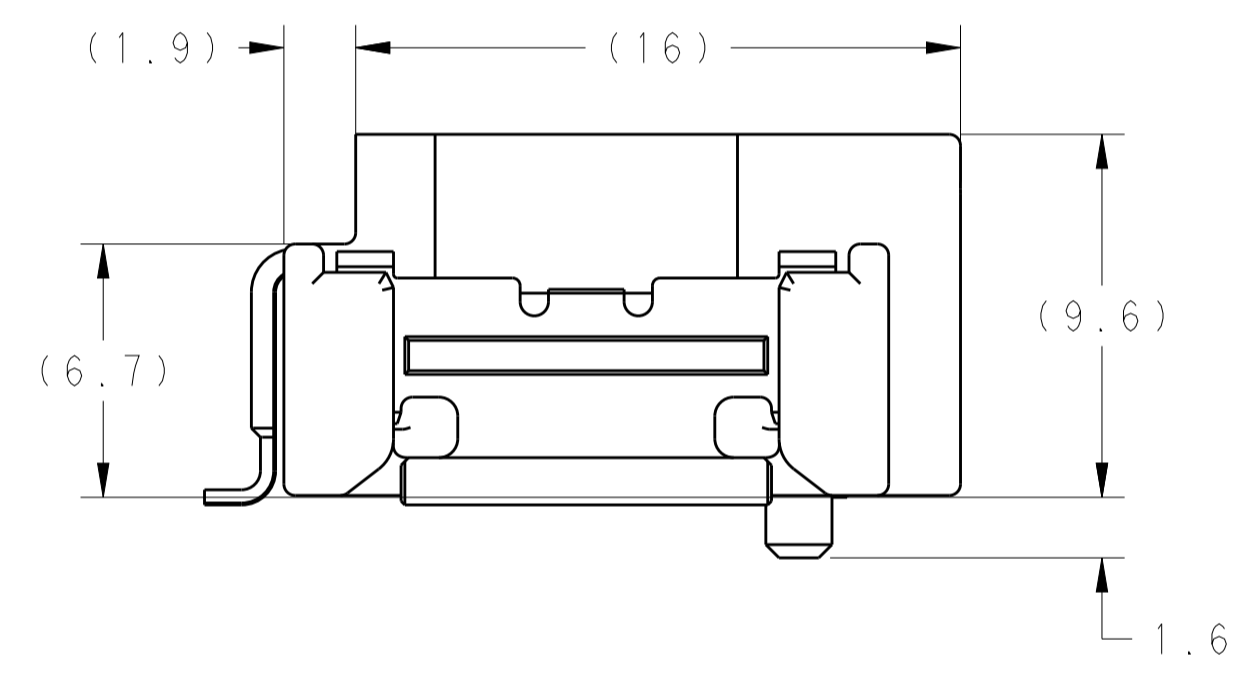
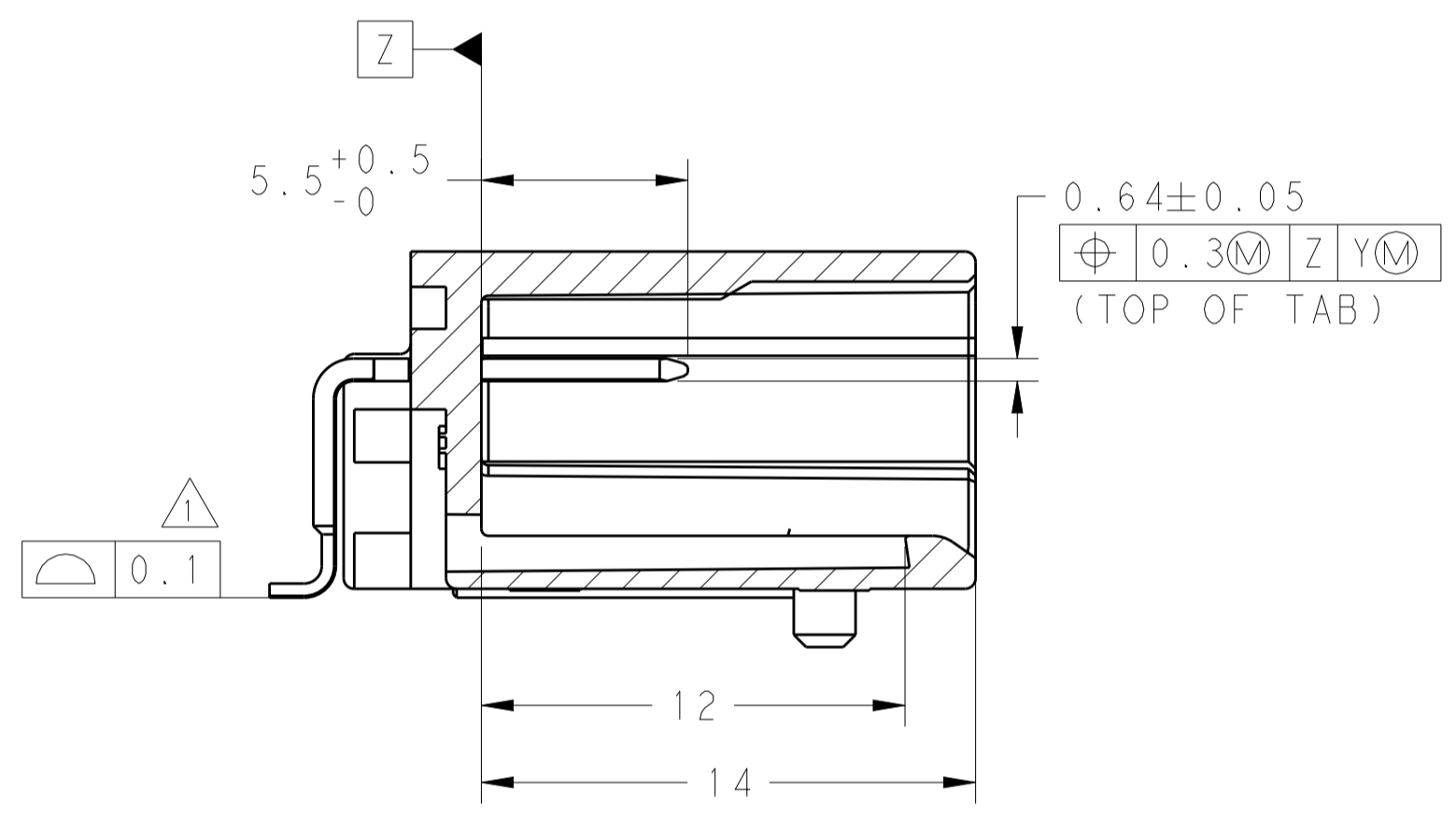
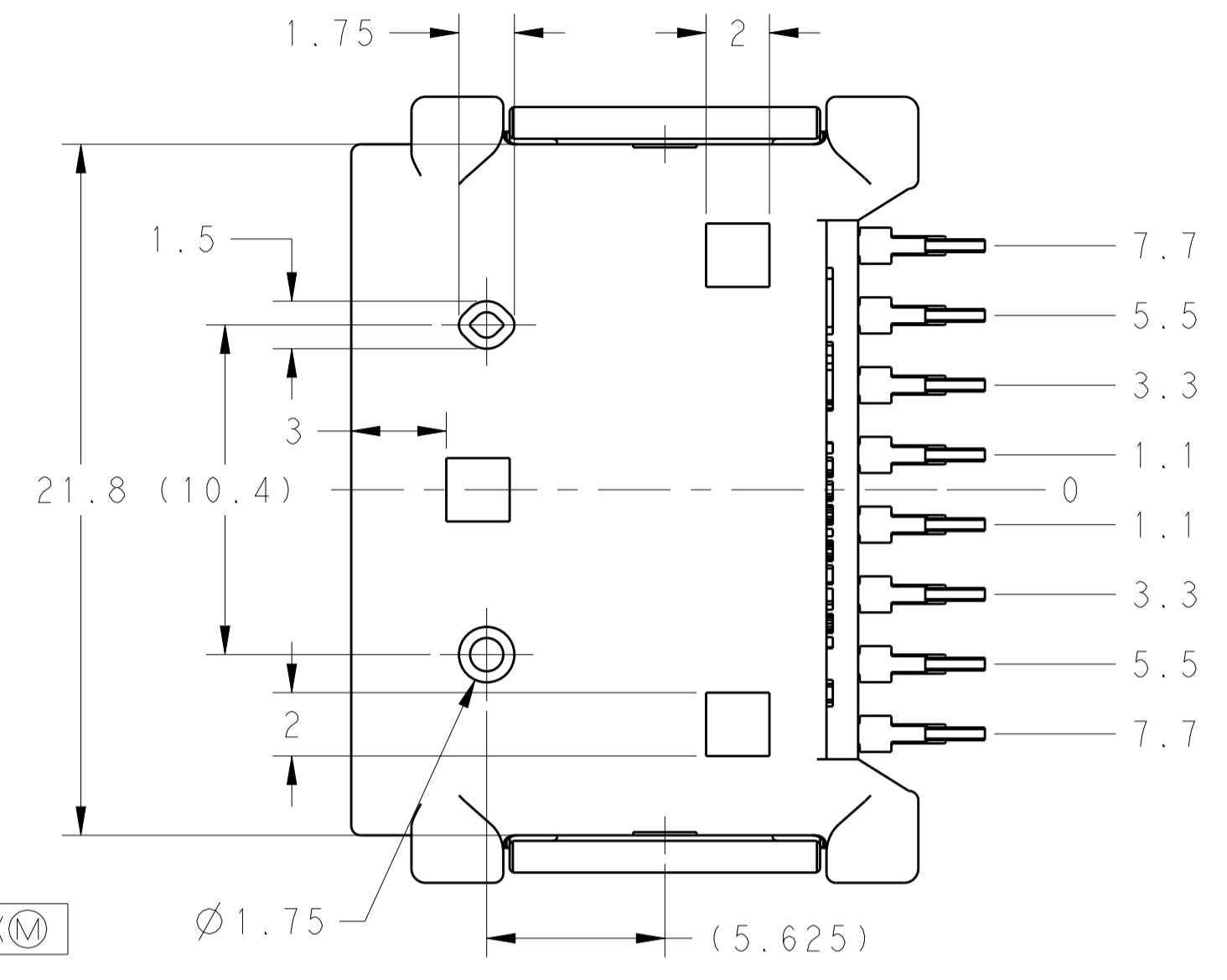
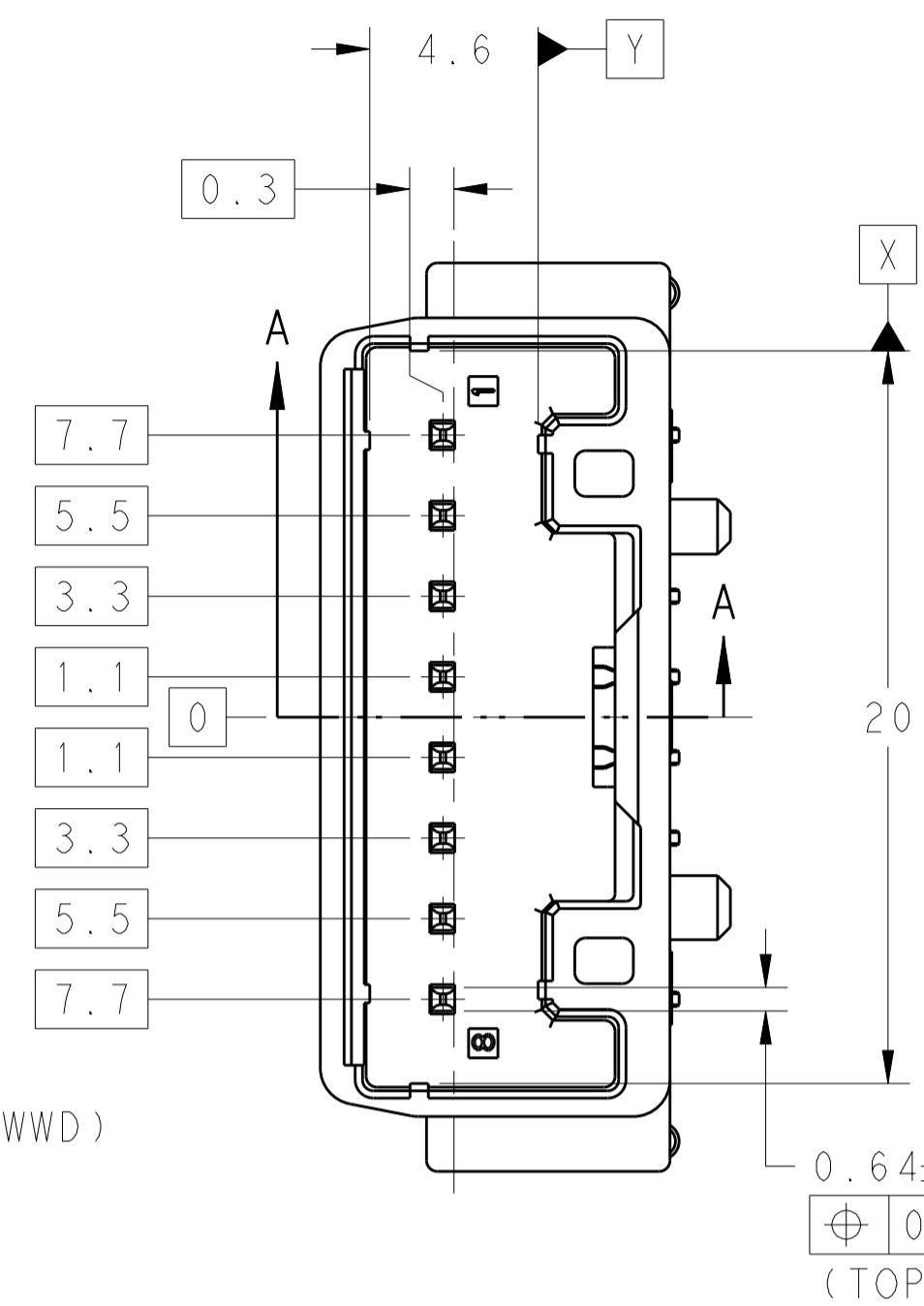
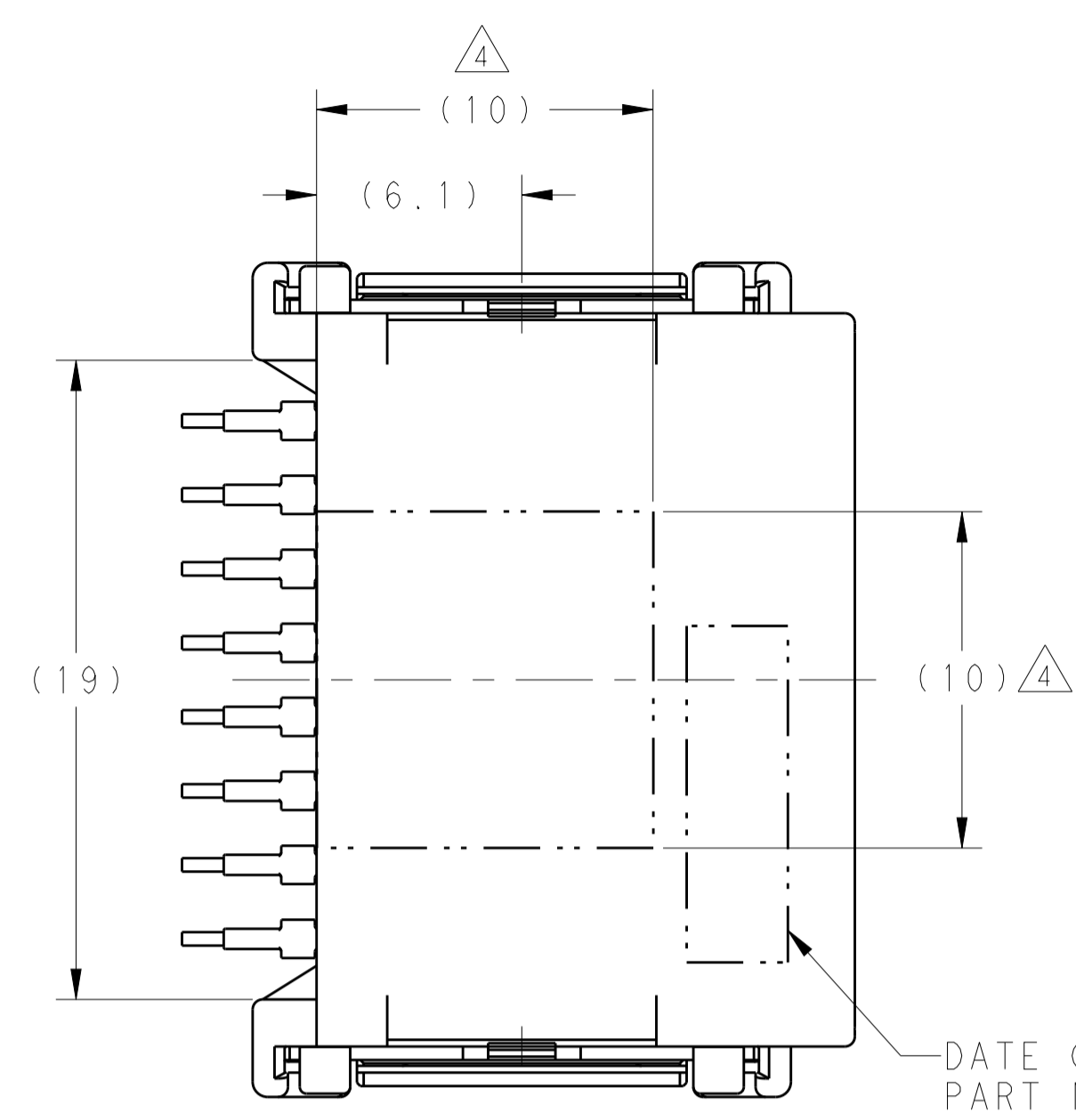
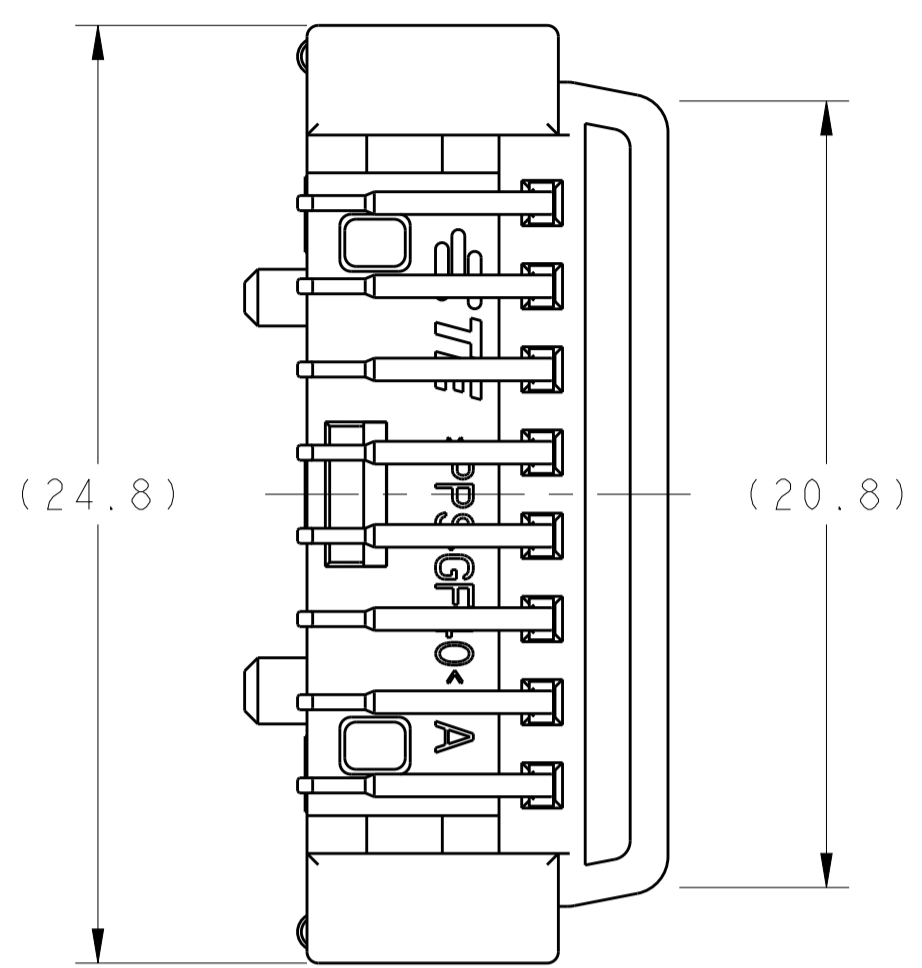
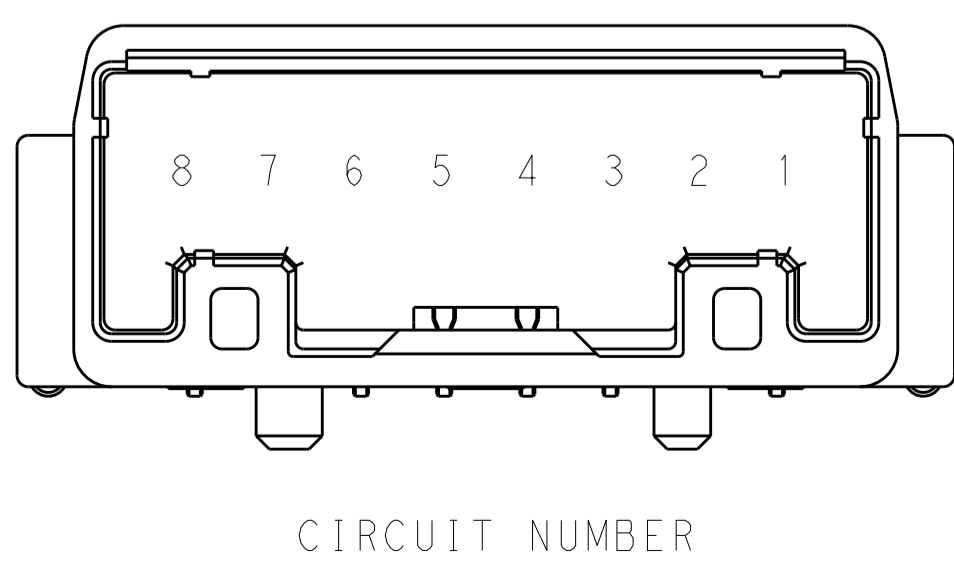
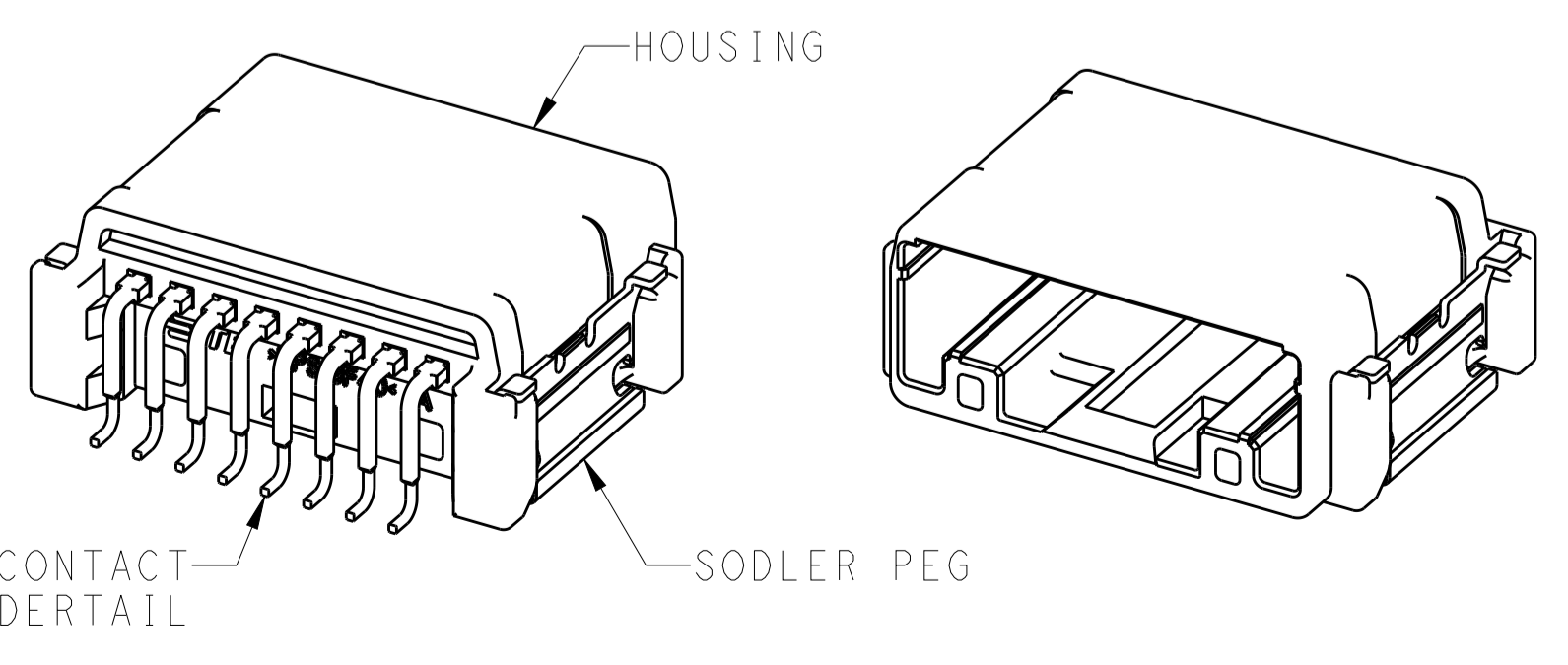
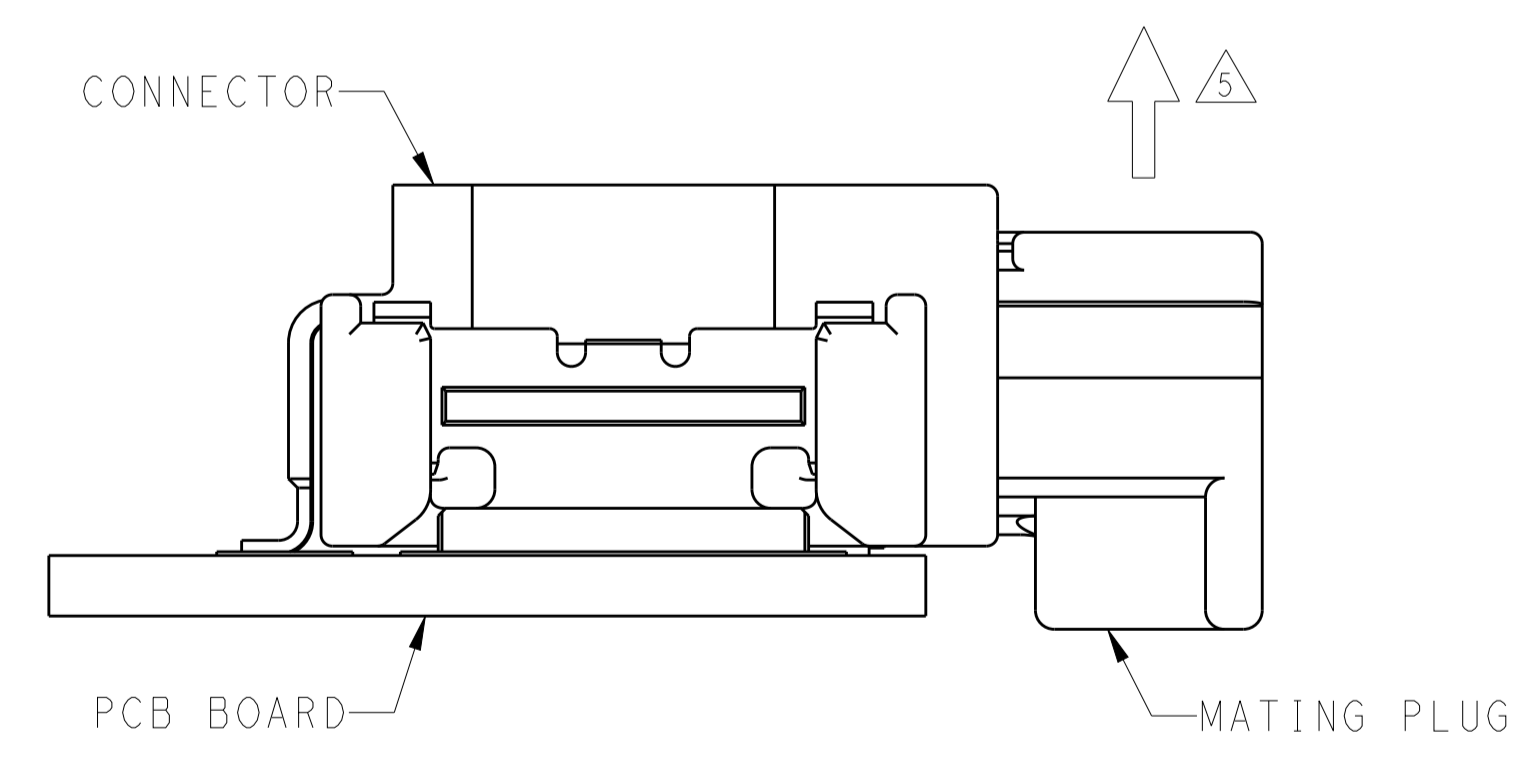


REVISIONS				
P.	LTM	DESCRIPTION	DATE	APVD
A		REVISED ECR-18-004558	26MAR2018	JC LSF
B		REVISED ECR-19-015761	10OCT2019	JC TK



- NOTE:
- △ COPLANARITY TO INCLUDE SOLDER TAIL AND SOLDER PEG
 2. MATING PLUG PART NUMBER: 2237147-1
 3. WHEN MOUNTING, THICKNESS OF SOLDER PASTE: 0.15mm MIN
 - △ RECOMMENDED AREA FOR CONNECTOR VACUUM PICK UP
 5. HANDLING THIS PART SHOULD FOLLOW INSTRUCTION SHEET: 411-51005
 - △ MUST BE USED IN APPLICATION WHERE MATING PLUG UPWARD MOVEMENT IS NOT POSSIBLE



PN: 2237145-1 AS SHOWN								
PAPER BOX	TRAY	BRASS	POST TIN OVER Ni	BRASS	POST TIN OVER Ni	PPS	BLACK	2237145-1
OUTER	INNER	MATERIAL	PLATING	MATERIAL	PLATING	MATERIAL	COLOR	PART NUMBER
PACKAGING		SOLDER PEG		CONTACT		HOUSING		
THIS DRAWING IS A CONTROLLED DOCUMENT.			DWN: JASON CHOW 19JUL2017		APVD: SF LEONG 19JUL2017			
DIMENSIONS: mm			TOLERANCES UNLESS OTHERWISE SPECIFIED:		NAME: SF LEONG 19JUL2017			
Ø			0 PLC ±0.3		PRODUCT SPEC: 108-51110			
H			1 PLC ±0.3		APPLICATION SPEC:			
L			3 PLC ±0.3		SIZE: CAGE CODE: DRAWING NO: A100779			
R			4 PLC ±0.3		RESTRICTED TO: -			
ANGLES			±0.3		WEIGHT: 2.8g			
FINISH			SEE TABLE		SCALE: 5:1 SHEET 1 OF 1 REV B			
MATERIAL			SEE TABLE		CUSTOMER DRAWING			