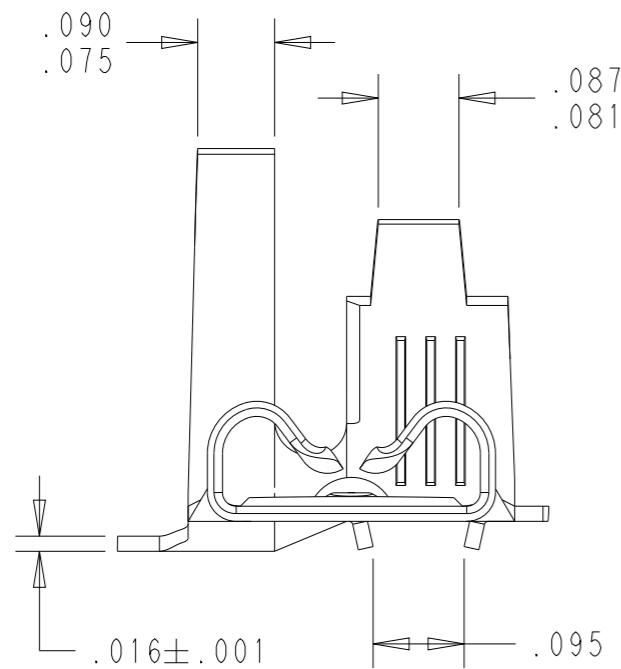
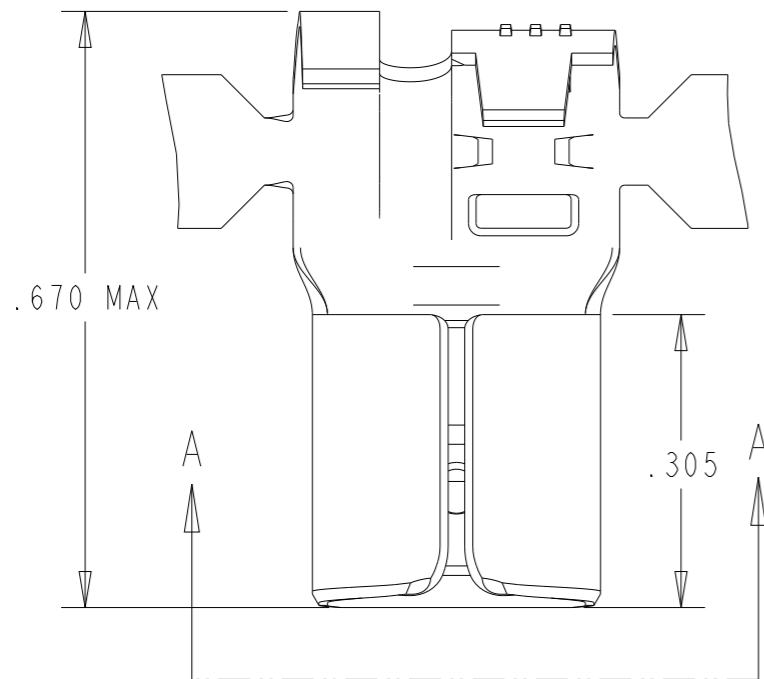
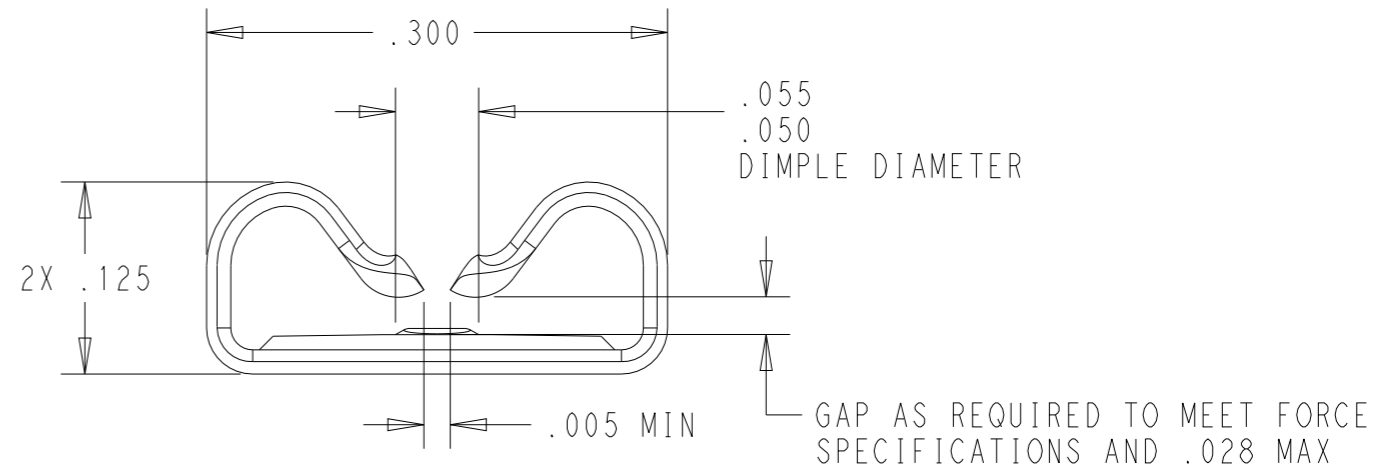


| P | LTR | DESCRIPTION | DATE | DWN | APVD |
|---|-----|-----------------------------------|-----------|-----|------|
| | B2 | REDRAWN/REVISED PER ECN-24-263040 | 26APR2024 | BKW | DH |
| | | | | | |
| | | | | | |



- CONTINUOUS STRIP ON REELS
 - WIRE SIZE RANGE: (SINGLE WIRE) 18-12
(TWO WIRE) (2)18AWG OR (1)18AWG+(1)16AWG ("TAB-LOK" CRIMP)
INSULATION DIAMETER RANGE: .110-.210 MAX ("O" CRIMP)
 - MATING TAB THICKNESS IS .030-.033
 - REELING ORIENTATION ACCORDING TO TE SPECIFICATION 107-3, FIG 243
- 5 THIS PART IS UL APPROVED FOR 18-12AWG



SECTION A-A
SCALE 8:1

| | | |
|--------|----------|-------------|
| TIN | BRASS | 5 2238197-3 |
| FINISH | MATERIAL | PART NUMBER |

| | | | | | | | | |
|---|--|---------------------------------|---|--------------------|-------------------------|--------------------|-----------------|-----------|
| THIS DRAWING IS A CONTROLLED DOCUMENT. | | DWN B. WEAVER 01FEB2024 | TE Connectivity NAME 250 SERIES FLAG, FASTON STANDARD RECEPTACLE | | | | | |
| DIMENSIONS: IN | | CHK D. HUMPHREY 01FEB2024 | | | | | | |
| | | APVD W. MOYER 01FEB2024 | | | | | | |
| TOLERANCES UNLESS OTHERWISE SPECIFIED: | | PRODUCT SPEC | | | | | | |
| 0 PLC ± 1 PLC ± 2 PLC ±.010 3 PLC ± 4 PLC ± ANGLES ±5° | | APPLICATION SPEC 114-2078 | SIZE A3 | CAGE CODE 00779 | DRAWING NO C-2238197 | RESTRICTED TO - | | |
| MATERIAL SEE TABLE | | FINISH SEE TABLE | WEIGHT - | CUSTOMER DRAWING | | SCALE 5:1 | SHEET 1 OF 1 | REV B2 |