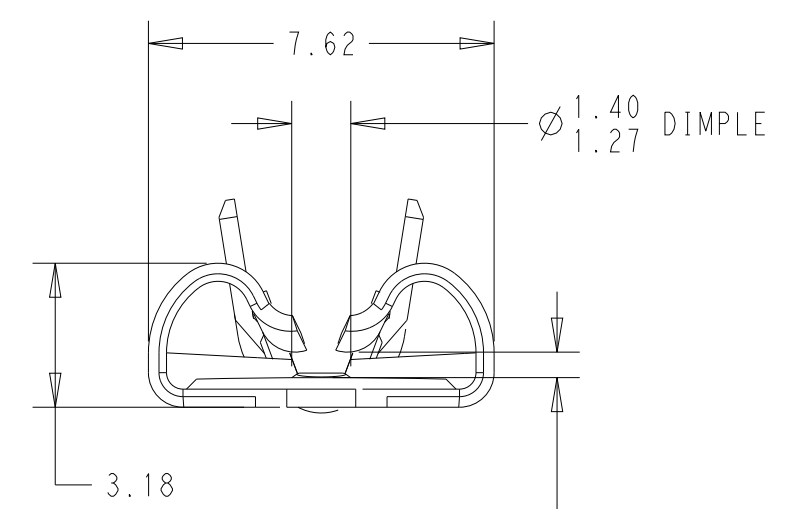
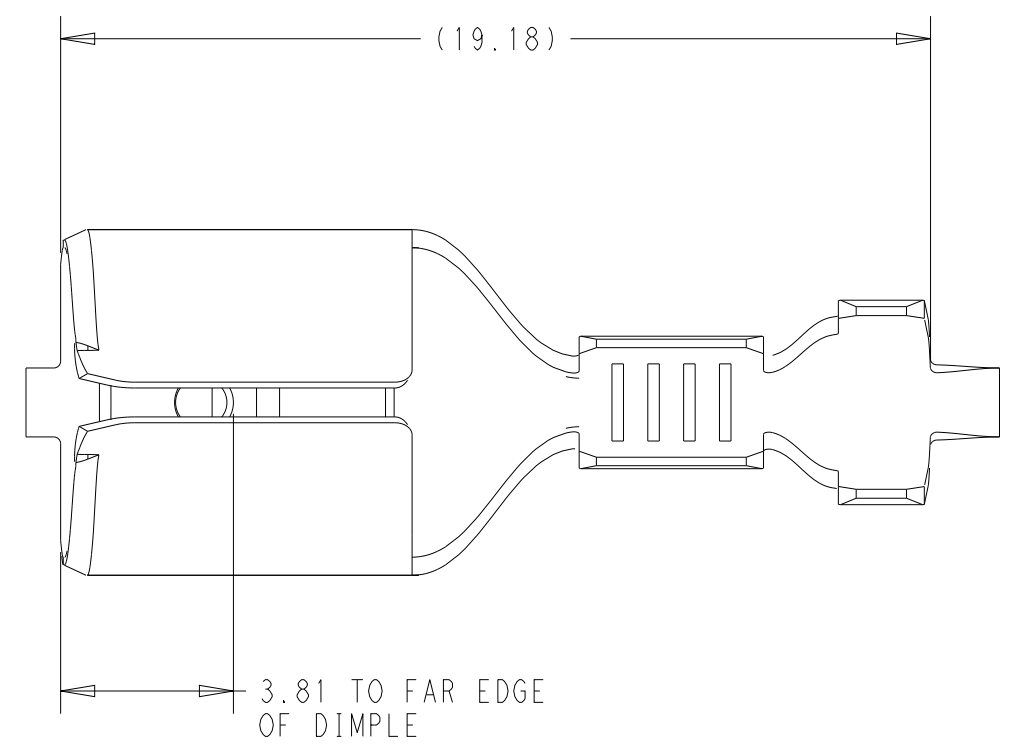


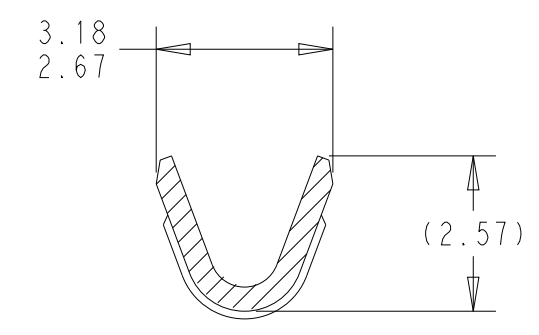
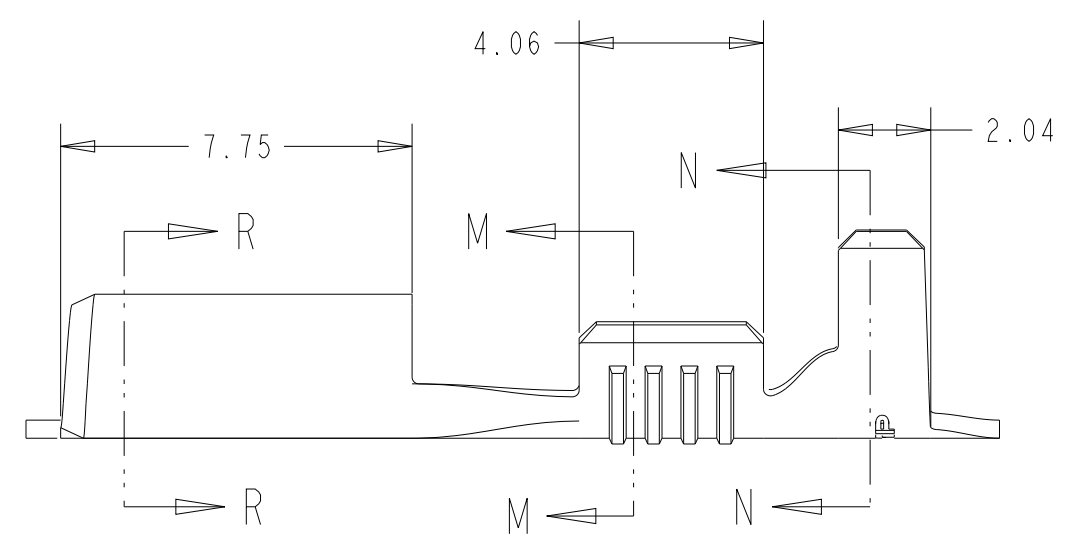
THIS DRAWING IS UNPUBLISHED. RELEASED FOR PUBLICATION 20
 © COPYRIGHT 2023 BY TE CONNECTIVITY ALL RIGHTS RESERVED.

REVISIONS				
P	LTR	DESCRIPTION	DATE	APVD
B		REVISED PER ECR-22-160871	20DEC2022	DB RE
B1		REVISED PER ECN-23-199026	17FEB2023	BKW WM
B2		REVISED PER ECN-23-235723	18OCT2023	BKW WM
B3		REVISED PER ECN-24-251700	08FEB2024	BKW DH

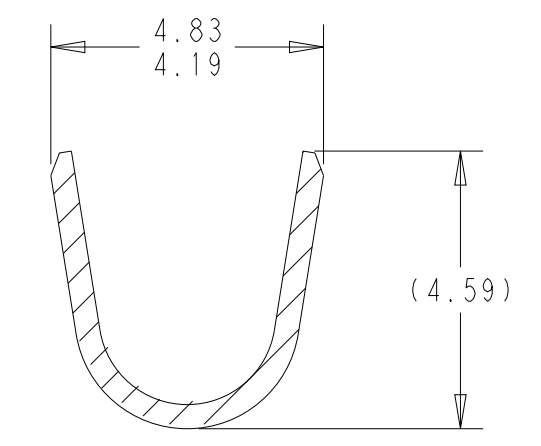
1. CONTINUOUS STRIP ON REELS
2. WIRE SIZE IS #22-#18 AWG
3. INSULATION RANGE IS 2.29-3.30 DIA
4. MATING TAB THK IS 0.76-0.84
5. THIS PRODUCT HAS NOT COMPLETED QUALIFICATION FOR UL TESTING



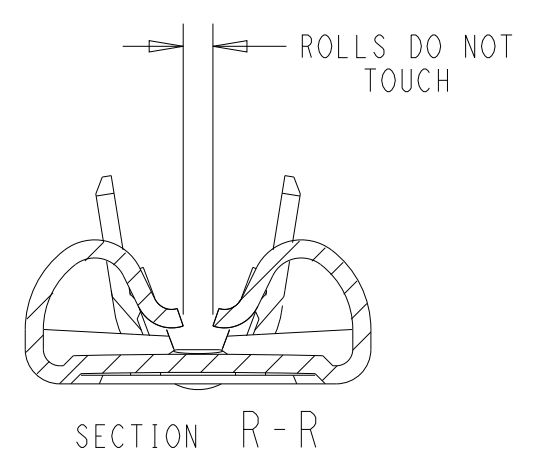
GAP AS REQUIRED TO MEET FORCE SPECIFICATIONS AND 0.71 MAX



SECTION M-M
SCALE 8:1



SECTION N-N
SCALE 8:1



TIN	PHOS. BRONZE	5 2238204-8
TIN	BRASS	2238204-3
FINISH	MATERIAL	PART NUMBER

THIS DRAWING IS A CONTROLLED DOCUMENT.		DWN B. WEAVER 28SEP2023	TE Connectivity	
DIMENSIONS: mm		CHK D. HUMPHREY 28SEP2023		
TOLERANCES UNLESS OTHERWISE SPECIFIED:		APVD W. MOYER 28SEP2023	NAME FASTON, 250 SERIES, REC., STR., F-CRP, AWG 22-18	
0 PLC ±		PRODUCT SPEC 108-5178	SIZE A2	
1 PLC ±		APPLICATION SPEC 114-2036	CAGE CODE 00779	DRAWING NO C-2238204
2 PLC ±0.25		WEIGHT -	RESTRICTED TO -	
3 PLC ±		CUSTOMER DRAWING	SCALE 6:1	SHEET 1 OF 1
4 PLC ±				REV B3
ANGLES ±5°				
FINISH SEE TABLE				