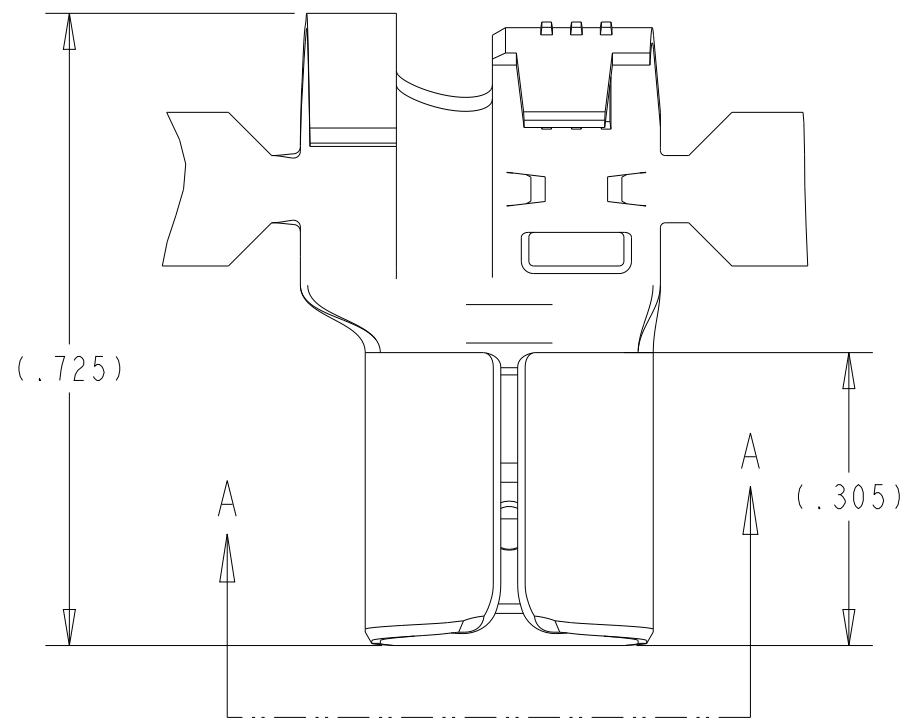
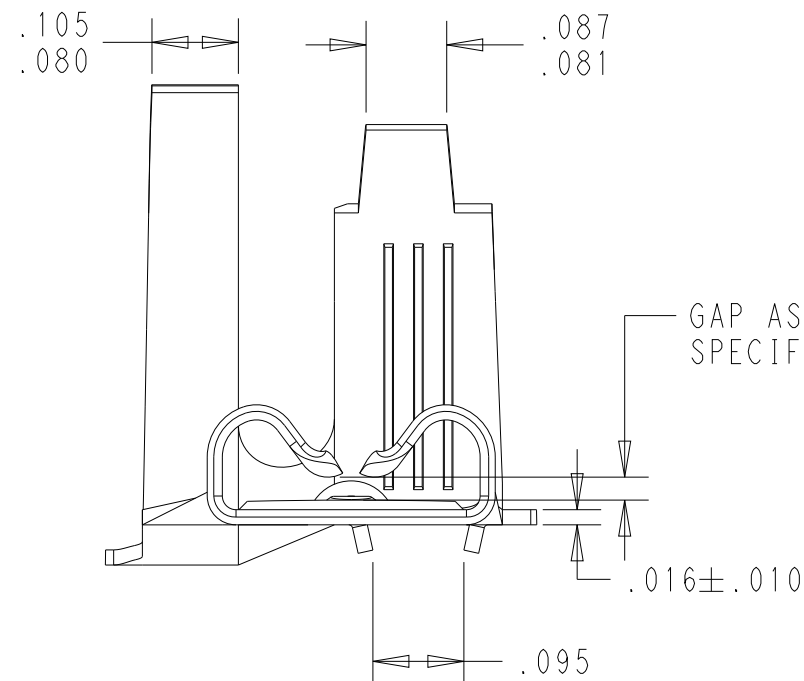


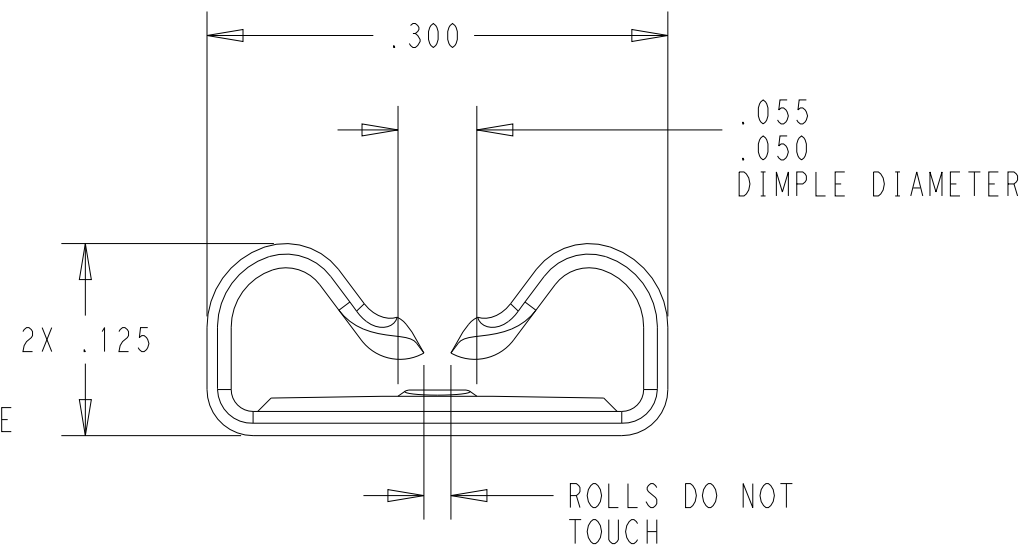
P	LTR	DESCRIPTION	DATE	DWN	APVD
	A3	REDRAWN/REVISED PER ECN-24-262881	25APR2024	BKW	DH



1. CONTINUOUS STRIP ON REELS
2. WIRE SIZE RANGE: (2)14AWG OR (2)16AWG OR (1)14AWG+(1)16AWG ("TAB-LOK" CRIMP)
INSULATION DIAMETER RANGE: (2).140mm MAX ("O" CRIMP)
3. MATING TAB THICKNESS IS .030-.033



GAP AS REQUIRED TO MEET FORCE SPECIFICATIONS AND .028 MAX



SECTION A-A
SCALE 8:1

TIN	BRASS	2238206-3
FINISH	MATERIAL	PART NUMBER

THIS DRAWING IS A CONTROLLED DOCUMENT.		DWN B. WEAVER 01FEB2024												
DIMENSIONS: IN		CHK D. HUMPHREY 01FEB2024												
TOLERANCES UNLESS OTHERWISE SPECIFIED:		APVD W. MOYER 01FEB2024												
<table border="0"> <tr> <td>0 PLC</td> <td>±-</td> </tr> <tr> <td>1 PLC</td> <td>±-</td> </tr> <tr> <td>2 PLC</td> <td>±.01</td> </tr> <tr> <td>3 PLC</td> <td>±-</td> </tr> <tr> <td>4 PLC</td> <td>±-</td> </tr> <tr> <td>ANGLES</td> <td>±5°</td> </tr> </table>		0 PLC			±-	1 PLC	±-	2 PLC	±.01	3 PLC	±-	4 PLC	±-	ANGLES
0 PLC	±-													
1 PLC	±-													
2 PLC	±.01													
3 PLC	±-													
4 PLC	±-													
ANGLES	±5°													
MATERIAL SEE TABLE	FINISH SEE TABLE	PRODUCT SPEC -	APPLICATION SPEC 114-2078	SIZE A3	CAGE CODE 00779	DRAWING NO C-2238206	RESTRICTED TO -							
CUSTOMER DRAWING			SCALE 5:1	SHEET 1 OF 1	REV A3									