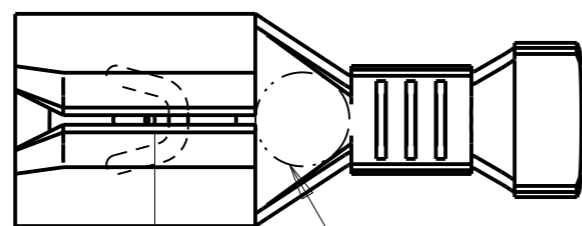


REVISIONS

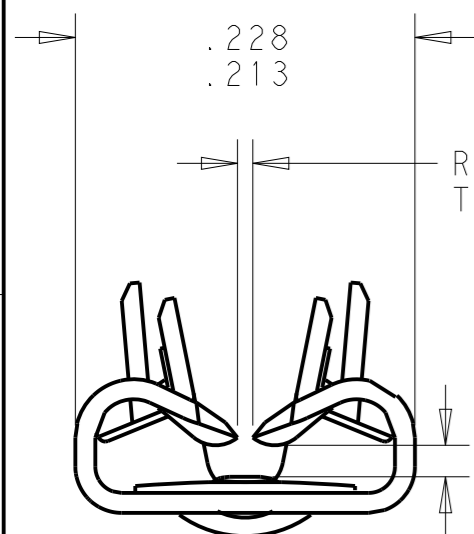
P	LTR	DESCRIPTION	DATE	DWN	APVD
	A1	REVISED PER ECO-19-007363	13MAY2019	RS	DH
	A2	REVISED PER ECR-20-009164	22JUL2020	MK	DH



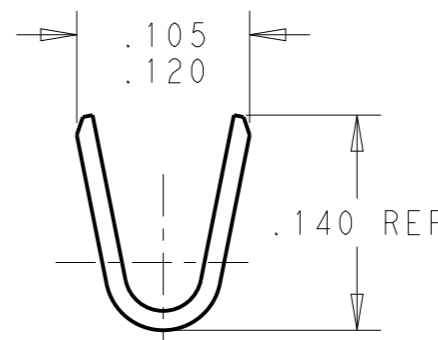
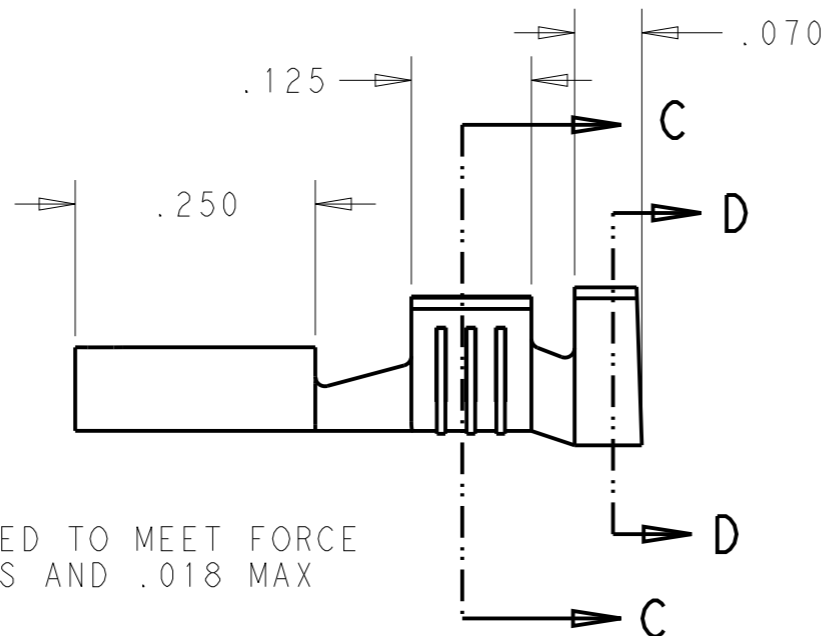
.145 TO FAR EDGE OF DIMPLE

7

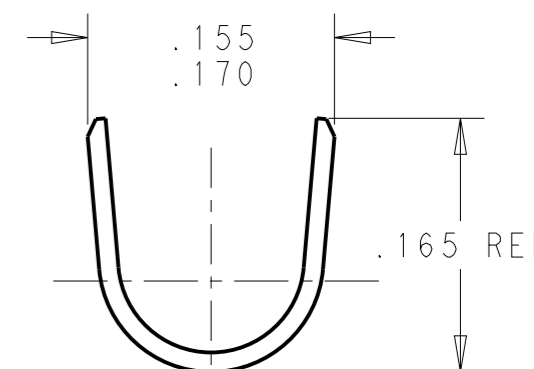
- 1 CONTINUOUS STRIP ON REELS.
- 2 WIRE SIZE #20-#16 AWG
- 3 INSULATION RANGE .090-.130 DIA
- 4 MATING TAB THK.021-.019
- 5 UL LISTING APPROVAL FOR AWG 20-16
- 6 NOTE REMOVED
- 7 MARKED "F5" IN APPROX. LOCATION SHOWN, TO IDENTIFY AS F-CRIMP AND .020" THICK X .187" PLATING TAB



ROLLS DO NOT TOUCH



SECTION C-C
SCALE 8:1



SECTION D-D
SCALE 8:1

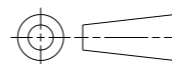
VIEW A-A
SCALE 8:1

GAP AS REQUIRED TO MEET FORCE SPECIFICATIONS AND .018 MAX

5	TIN FINISH	BRASS MATERIAL	2238207-3 PART NO.
---	------------	----------------	--------------------

THIS DRAWING IS A CONTROLLED DOCUMENT.

DIMENSIONS:
INCHES



TOLERANCES UNLESS OTHERWISE SPECIFIED:

0 PLC	±-
1 PLC	±-
2 PLC	±.010
3 PLC	±-
4 PLC	±-
ANGLES	±5°

MATERIAL
SEE TABLE

FINISH
SEE TABLE

DWN	05MAY2018
BASAVARAJA D A	
CHK	05MAY2018
HUMPHREY, DAVID	
APVD	05MAY2018
HUMPHREY, DAVID	

PRODUCT SPEC	-
APPLICATION SPEC	-
WEIGHT	-

CUSTOMER DRAWING

STE TE Connectivity

NAME
FASTON 187 STD REC
F-CR 20-16 TPBR
.020 THK TAB

SIZE	CAGE CODE	DRAWING NO	RESTRICTED TO
A3	00779	C-2238207	-

SCALE	SHEET	OF	REV
5:1	1	1	A2