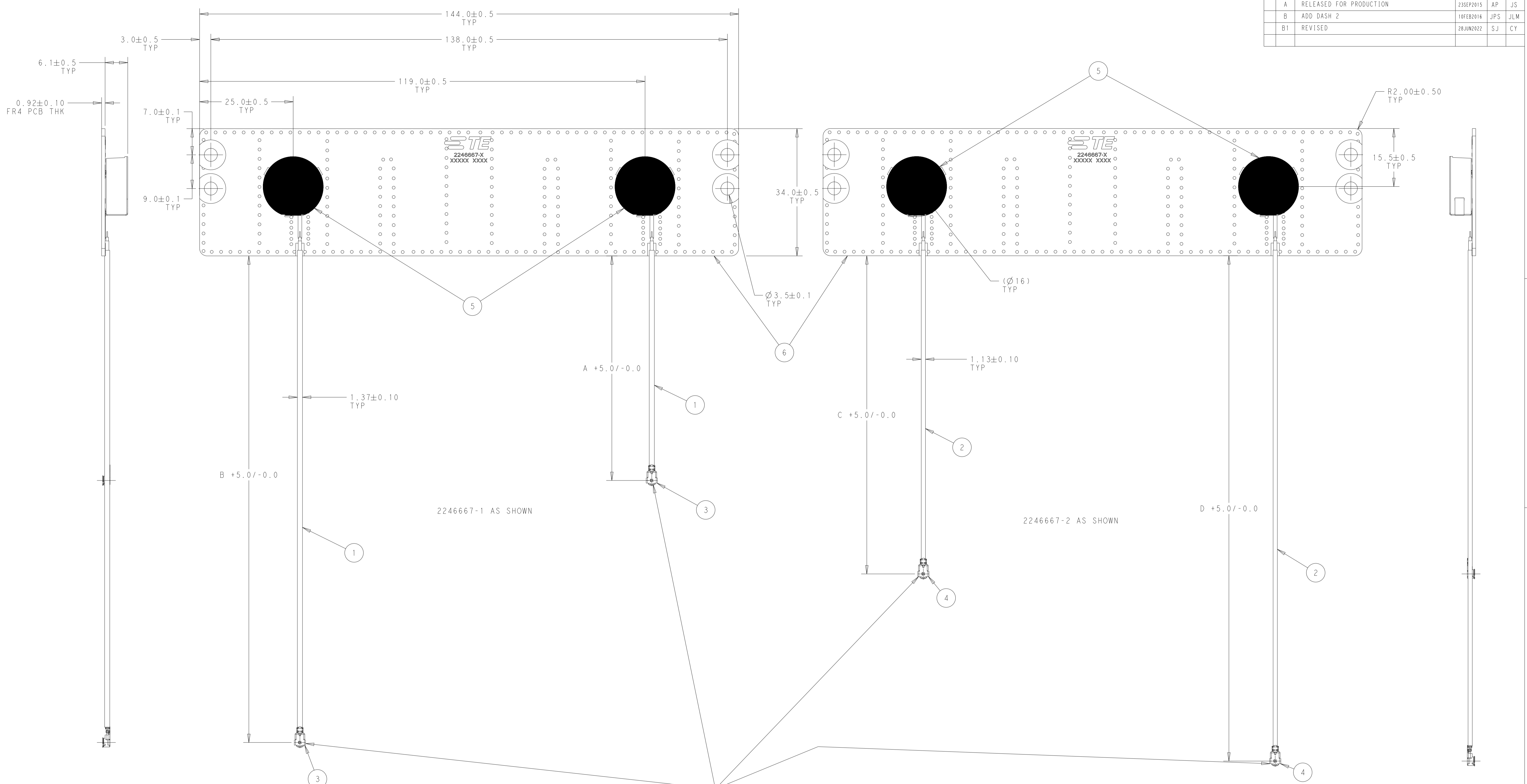


REVISIONS				
P	LTN	DESCRIPTION	DATE	APVD
A		RELEASED FOR PRODUCTION	23SEP2015	AP JS
B		ADD DASH 2	10FEB2016	JPS JLM
B1		REVISED	28JUN2022	SJ CY



1. PARTS AND PROCESSES ARE RoHS COMPLIANT PER TE CONNECTIVITY STANDARD TEC-138-702.

QTY	DESCRIPTION	ITEM
1	PCB	6
2	DUAL BAND PUCK ANTENNA	5
2	1-PEX 20565 MHF4L CONNECTOR PLUG 1.13	4
2	1-PEX 20351 MHF CONNECTOR PLUG 1.37	3
2	1.13 DIA COAX CABLE BLACK	2
2	1.37 DIA COAX CABLE BLACK	1

THIS DRAWING IS A CONTROLLED DOCUMENT.

DWN	J. SCHOLZ	10FEB2016
CHK	J. SCHOLZ	10FEB2016
APVD	J. MOORE	10FEB2016

NAME: DUAL BAND PUCK ANTENNA ASSEMBLY WITH 1.37 AND 1.13 COAX CABLES

SIZE: A1 CAGE CODE: C=2246667 DRAWING NO: 2246667-1

SCALE: 2:1 SHEET 1 OF 1 REV: B1