

THIS DRAWING IS UNPUBLISHED. RELEASED FOR PUBLICATION 20  
COPYRIGHT 20 ALL RIGHTS RESERVED.

CRIMPING DATA  
(DADOS DE GRAMPEAÇÃO)

Table with columns: TERMINAL NAME, DISC LETTER, CRIMP HEIGHT, WIRE SIZE, WIRE STRIP LENGTH, CRIMPER, CRIMP WIDTH, TYPE, APPLICATOR FEED, INSULATION, WIRE RANGE, GAGE, and TERMINALS APPLIED.

D

C

NOTE:

B

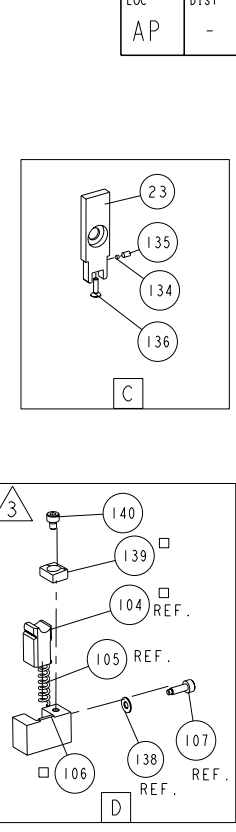
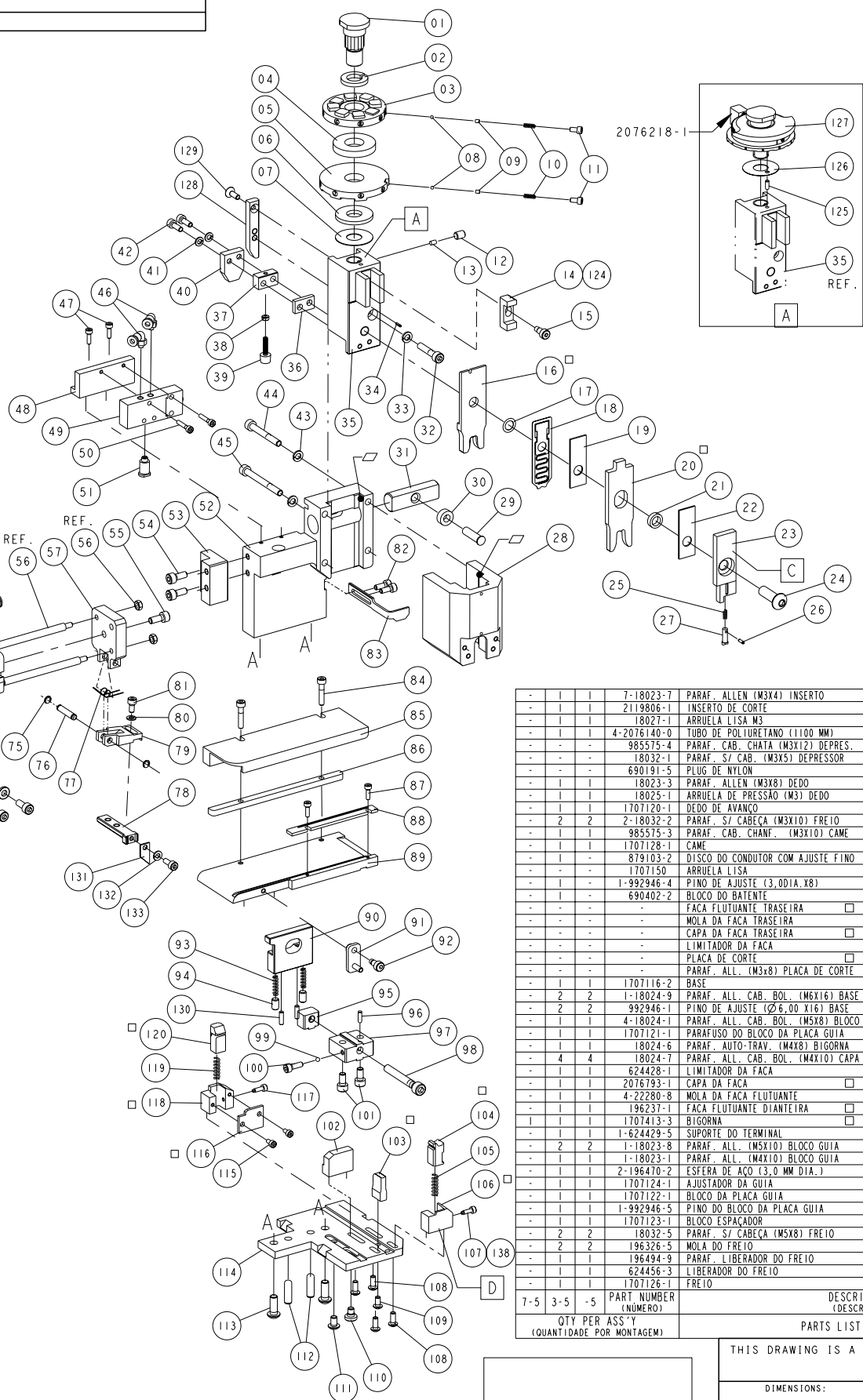
KEYS:

NOTAS:

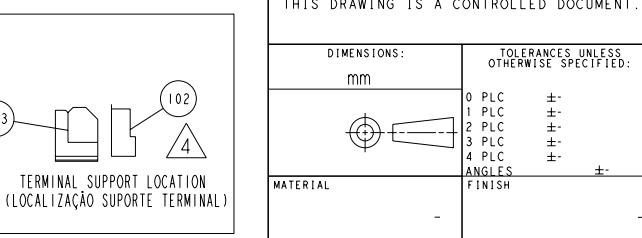
A

RECOMENDAÇÕES:

Table with columns: PART NUMBER (NÚMERO) and DESCRIPTION (DESCRIÇÃO). Lists application kits for different wire sizes.



Parts List (Lista de Peças) table with columns: QTY PER ASS'Y (QUANTIDADE POR MONTAGEM), PART NUMBER (NÚMERO), DESCRIPTION (DESCRIÇÃO), and ITEM.



REVISIONS table with columns: P, LTR, DESCRIPTION, DATE, DWN, APVD. Shows three revisions: A (RELEASED), B (ECO-16-004320), and C (ECO-16-007963).

Table with columns: P, LTR, DESCRIPTION, DATE, DWN, APVD. Lists various parts and their specifications, including plate guides, spacers, guides, and various pins and washers.

D

C

B

A

Controlled document header with fields for dimensions, tolerances, material, weight, and customer drawing information. Includes the STE logo and product name 'PNEUMATIC MINI APPLICATOR (SW) (METRIC)'.