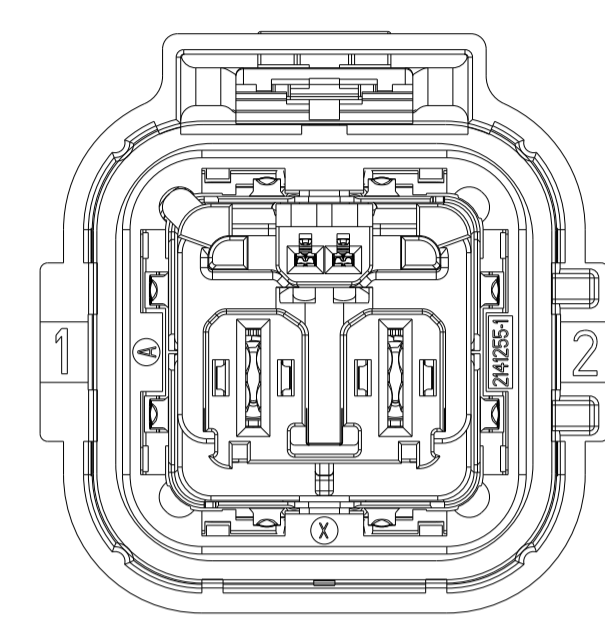
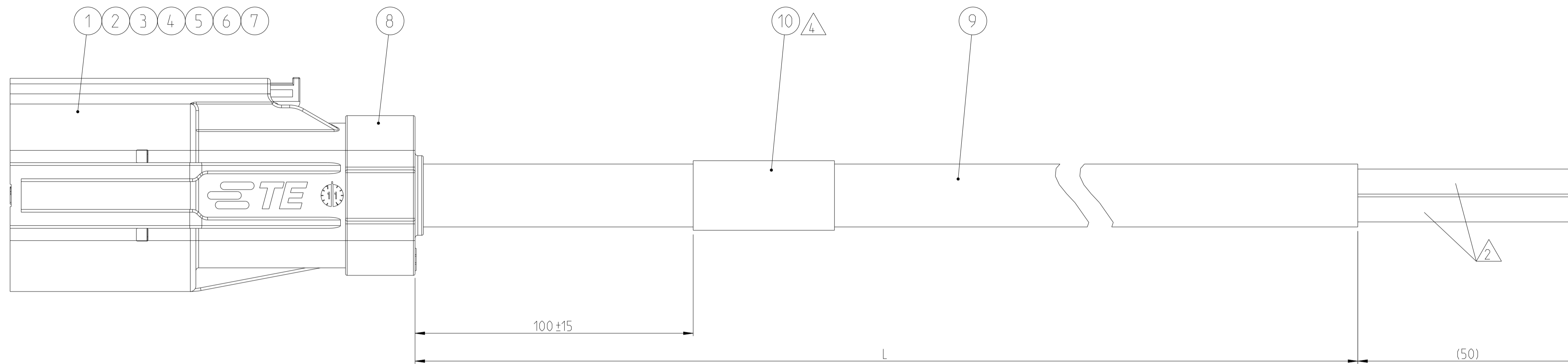


THE DRAWING SHOWS THE 2-DIMENSIONAL REFERENCE COMPONENT CONDITION OF THE ASSEMBLY TO IDENTIFY AND SPECIFY THE NECESSARY DIMENSIONS ONLY. THE DELIVERED PARTS MAY DEVIATE FROM THE DRAWING REGARDING THE ORIENTATION AND POSITION OF EACH COMPONENT (e.g. SLACK CABLE), SO FAR THE FUNCTIONALITY IS NOT CONCERNED.

DIE ZEICHNUNG ZEIGT DEN 2-DIMENSIONALEN IDEALZUSTAND DES ZUSAMMENBAUTEILS BEZÜGLICH DER KOMPONENTEN ZUR IDENTIFIKATION UND SPEZIFIKATION DER NOTWENDIGEN DIMENSIONEN. HINSICHTLICH DER ORIENTIERUNG UND DER LAGE DER KOMPONENTEN (Z.B. BIEGESCHLAPPTES KABEL) KÖNNEN DIE DELIEFERTEN TEILE VON DER ZEICHNUNG ABWEICHEN, SOFERN DIE FUNKTIONALITÄT NICHT BEEINTRÄCHTIGT IST.

REVISIONS				
REV.	LTN	DESCRIPTION	DATE	APPROV.
J		COMPONENT REVISION CHANGED	31DEC12018	JS JS
K		COMPONENT REVISION CHANGED	22JUL2021	DS JT
K1		SUPERSEDED PNs	03JUL2023	DS JK



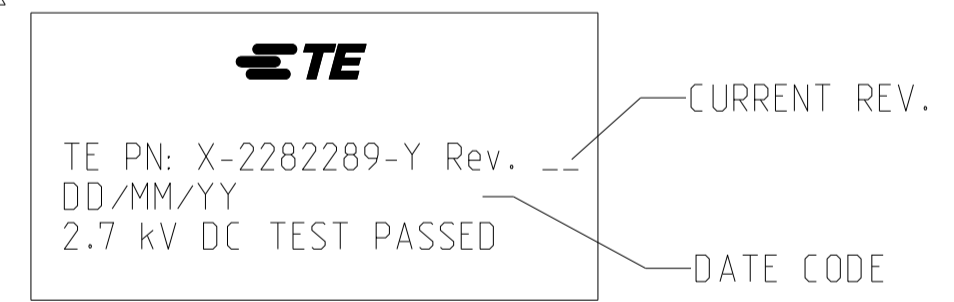
WIRING SCHEDULE:

CAVITY-NO.	WIRE COLOR
1	red
2	black

LENGTH SCHEDULE:

SUPERSEDED BY	TE PART NO.	REV.	LENGTH L [mm]	TOL. [mm]	CODING
-	1-2282289-1	J	1000	+30	A
-	1-2282289-2	J	2000	+35	
-	1-2282289-3	J	3000	+40	
K1	1-2282289-5	J	4000	+50	
-	1-2282289-5	J	5000	+60	
-	1-2282289-6	F	10000	+100	
-	1-2282289-7	C	12000	+105	F
K1	6-2282289-2	J	1000	+30	
-	6-2282289-2	J	2000	+35	
-	6-2282289-3	J	3000	+40	
K1	6-2282289-5	J	4000	+50	
-	6-2282289-5	J	5000	+60	

LABEL LEGEND:



NOTES

- 1 PACKAGING:
ASSEMBLIES PACKED IN TE STANDARD BOXES WITH INTERMEDIATE LAYERS OF CORRUGATED PAPER OR PAPER STUFFING (TE SPEC. 107-18087). DAMAGED TO BE AVOIDED.
- 2 ELECTRICAL TEST ACCORDING TE SPECIFICATION 108-18857, CHAPTER 3.3. USE CURRENT REVISION ALWAYS. STRIPPED ONLY OUTER JACKET, BRAID AND INNER SHEATH.
- 3 TE PRODUCT SPECIFICATION:
108-18718

TE APPLICATION SPECIFICATION:
114-18388 (MCP 6.3/4.8 K)
114-94100
- 4 MANUFACTURING CODE:
TE PART NO., CURRENT REV. LEVEL AND DATE CODE (DD.MM.YY). TO BE PRINTED ON LABEL (ITEM 1). LABEL TO BE APPLIED TO THE CABLE AFTER SUCCESSFUL ELECTRICAL TEST.

1	1	LABEL, HELLERMANN	10
-	-	POWER CABLE, 2x4 mm ²	9
1	1	COVER, SEAL	8
1	1	SINGLE WIRE SEAL, AMP MCP 6.3/4.8K	7
2	2	SHIELDING, EMC	6
1	1	SHIELD CRIMP FERRULE, OUTSIDE	5
1	1	SHIELD CRIMP FERRULE, INNER	4
2	2	MCP 6.3/4.8 K	3
1	-	2 POS, AMP MCP 6.3/4.8K, REC HSG. ASSY, CODE F	2
-	1	2 POS, AMP MCP 6.3/4.8K, REC HSG. ASSY, CODE A	1
1	1	2 POS, MIXED, REC HSG. ASSY	1
QTY	QTY	DESCRIPTION	ITEM NO.
6-X	1-X		
-	-	WEIGHT OF EACH ASSY NO. (g)	

TOLERANCING EN ISO 8015
TOLERIERUNG EN ISO 8015

DIESE ZEICHNUNG IST EIN KONTROLLIERTES DOKUMENT. BEMASSUNGEN UND TOLERANZEN GEMAESS GPS (ISO STANDARDS).

THIS DRAWING IS A CONTROLLED DOCUMENT. DIMENSIONING AND TOLERANCING PER GPS (ISO STANDARDS).

DIMENSIONS: MASSENHEITEN: mm

TOLERANCES UNLESS OTHERWISE SPECIFIED: ALL DIMENSIONS

0 PLC ±
1 PLC ±
2 PLC ±
3 PLC ±
4 PLC ±
ANGLES/WINKEL ±
FINISH/BEFLÄCHE/FARBE

TE Connectivity

NAME: 2 POS. HVA, 630-2PHM PIGTAIL, HYB ASSY

SIZE: A | CAGE CODE: 00779 | DRAWING NO: 2282289

RESTRICTED TO NON-PUR

CUSTOMER DRAWING

SCALE: 2:1

SHEET: 1 OF 1

REV: K1