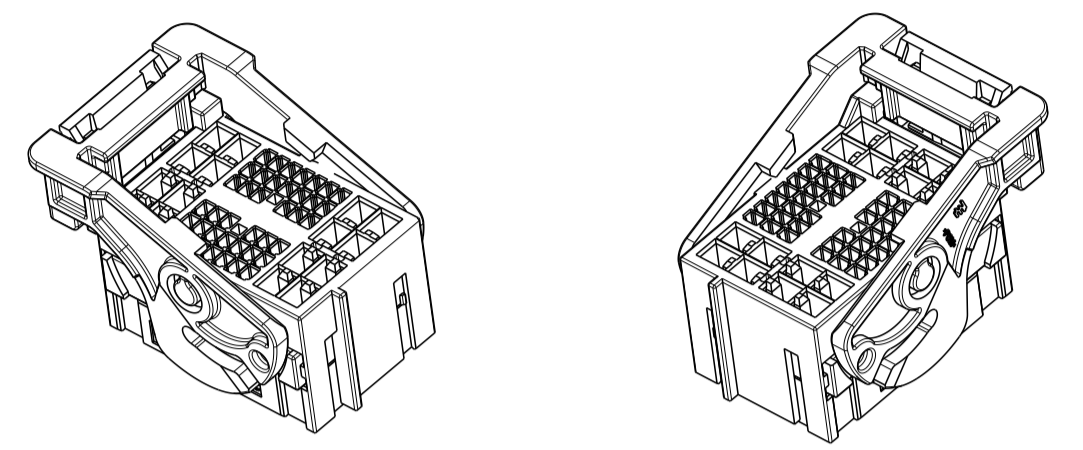
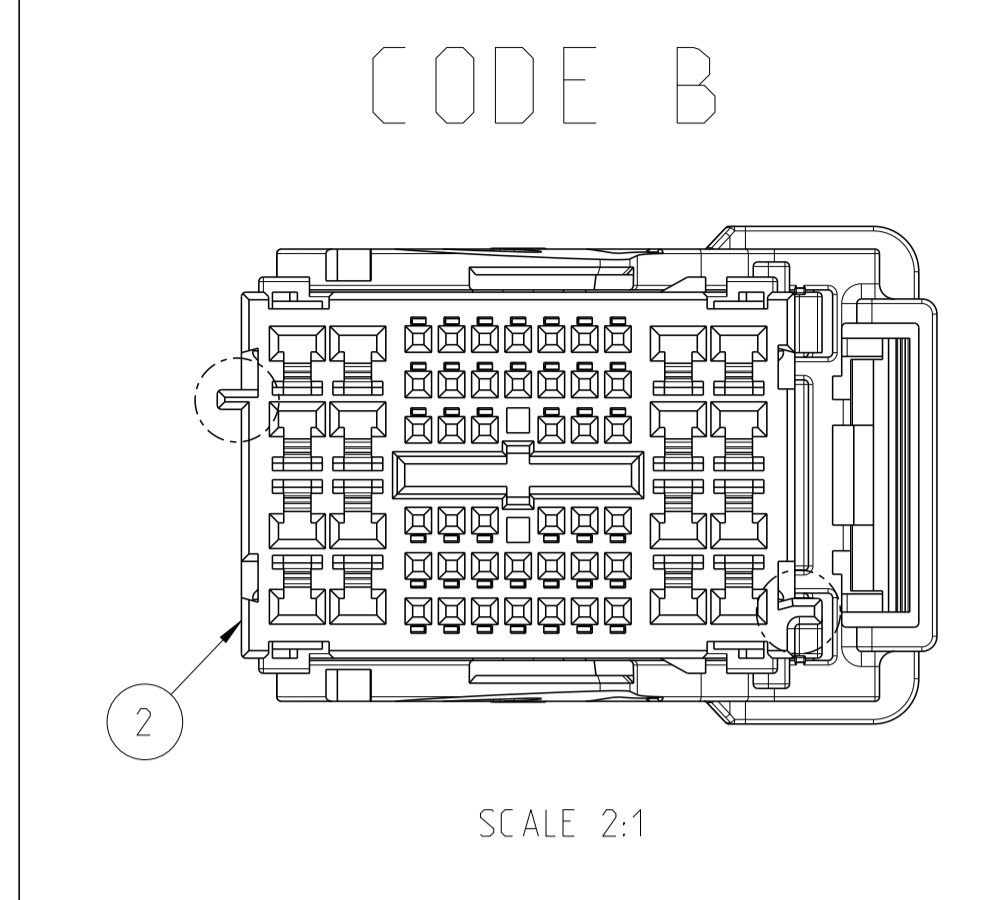
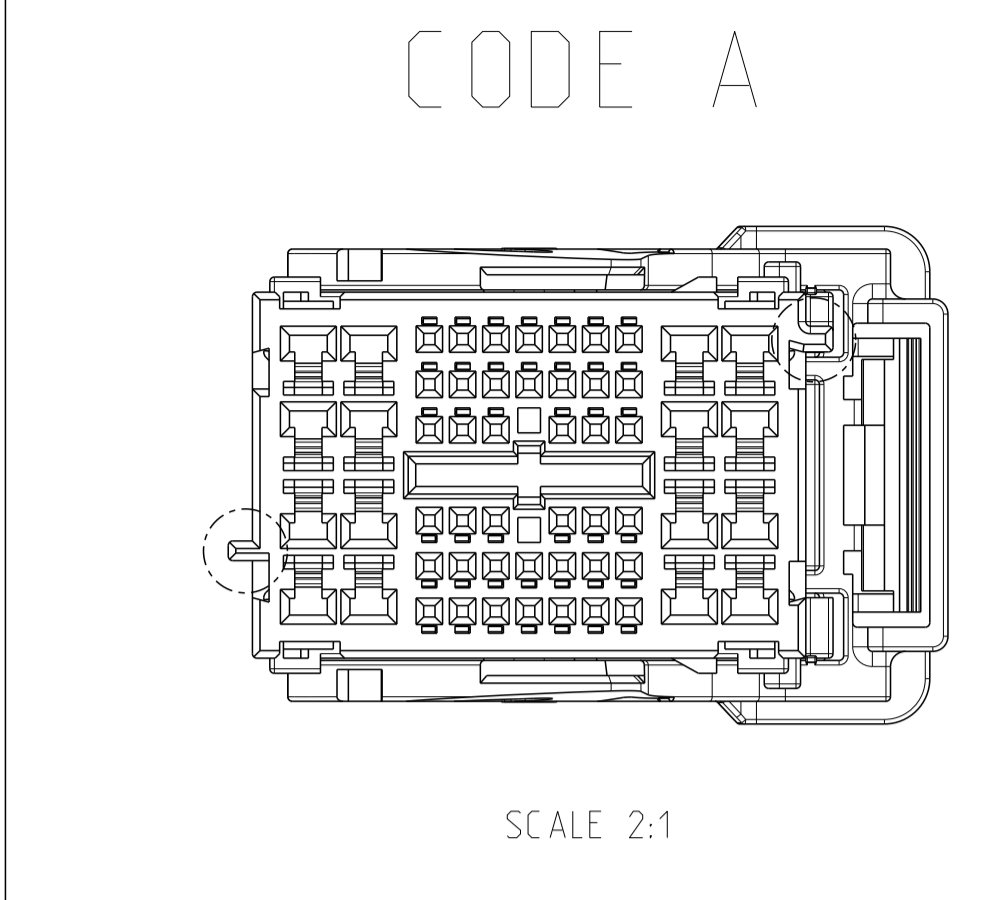
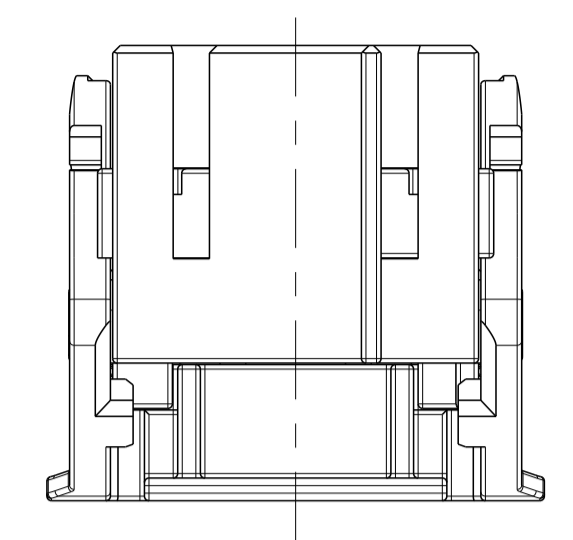
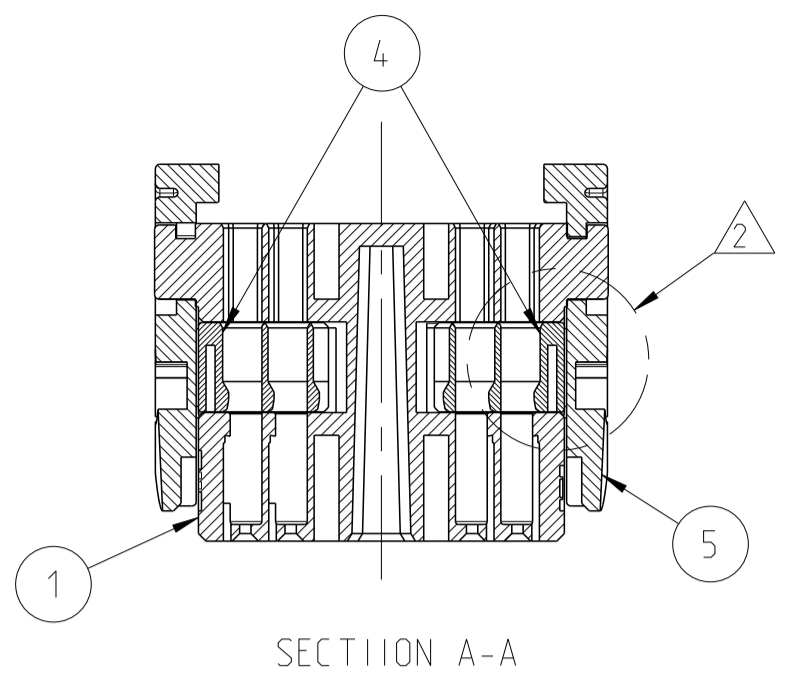
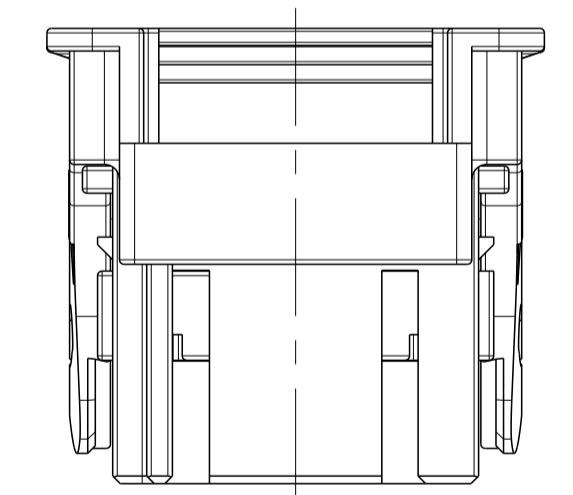
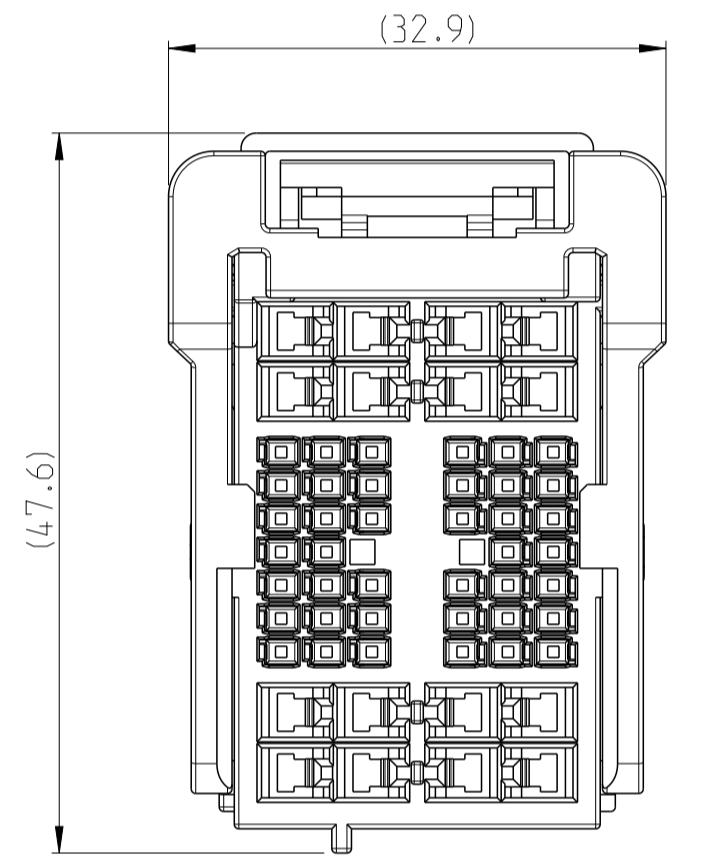
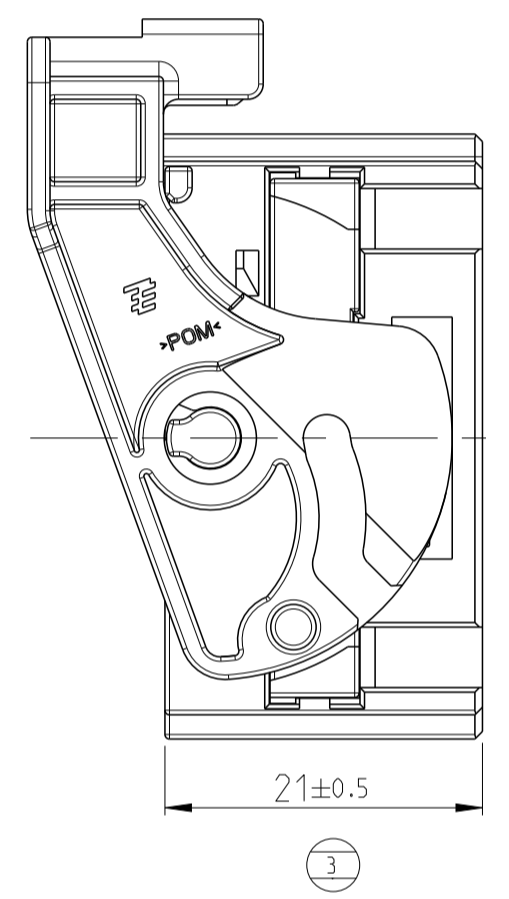
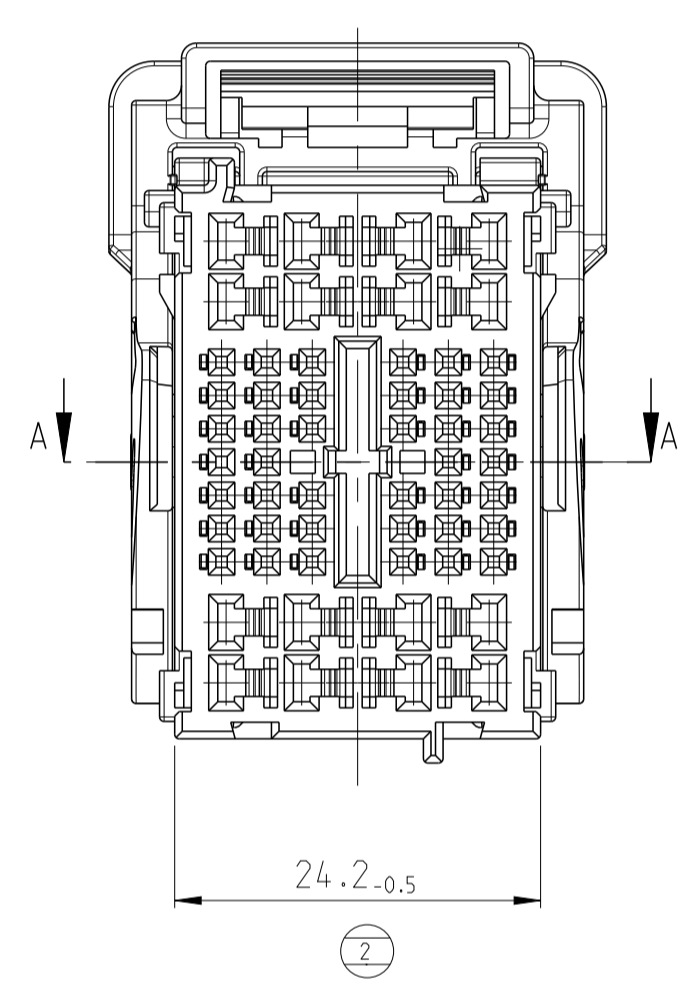
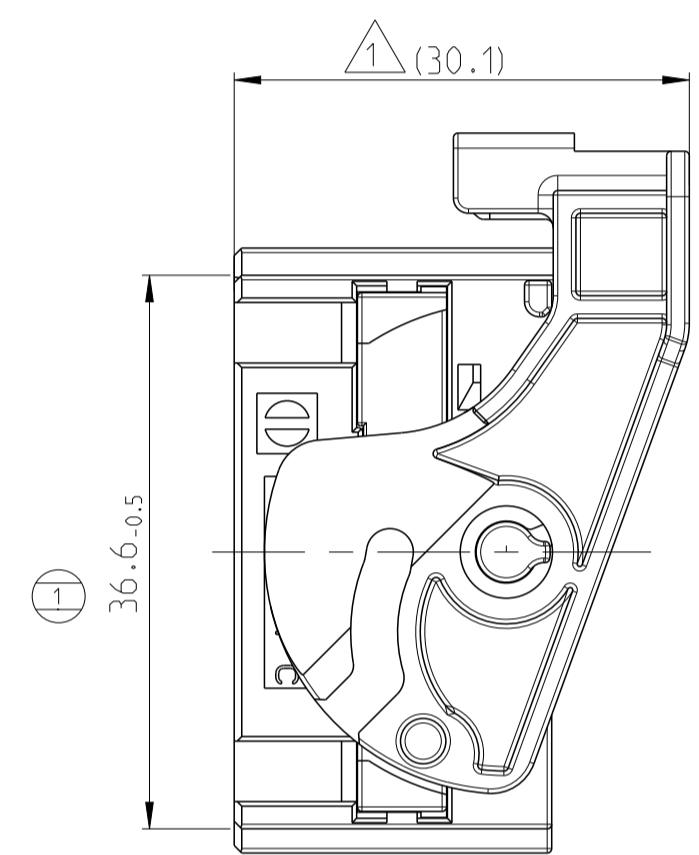


REVISIONS					
P	LTM	DESCRIPTION	DATE	DMN	APVD
A2		SEE ECR-15-008763	01JUL2015	SB	RK
B		CAVITY MARKING DELETION	19SEP2017	DJ	KB
B1		SEE ECR-22-156376	07NOV2022	MK	CP
B2		SEE ECR-24-212149	26JUN2024	SN	CP



3D VIEW
SCALE 1:1



- NOTES
- ① CONDITION OF DELIVERY ON LEVER
 - ② CONDITION OF DELIVERY : DBL IN 1ST LOCKING POSITION
 - ③ MATED WITH CAP HOUSING ASSEMBLY PART NO: 2287450-1 (CODE A) OR 2287450-2 (CODE B)
 - 4. APPLIED REC CONTACT P/N : TABLE 1
 - 5. REGRIND MATERIAL PROCESSED IN CLOSED LOOP.
 - 6. UNSPECIFIED TOLERANCES AS PER DIN 16901-140.

TABLE 1

TYPE	FINISH	P/N	APPLICABLE WIRE RANGE(mm ²)
.025	PRE-TIN	1123343-1	0.22-0.5
	GOLD	1123343-2	
	PRE-TIN	2005097-1	0.22
	PRE-TIN	2005427-1	0.3-0.5
.090	PRE-TIN	1897753-1	0.22
		1743654-1	0.3-0.5
		1743655-1	0.75-1.25
		1743656-1	1.5-2.0
		1897598-1	2.5

CODE B CODE A SHOWN DRAWING IS FOR 2287452-1

QTY PER ASSY	REV	DESCRIPTION	REGRIND	MATERIAL	COLOUR	ITEM NO	
1	1	2219544-3	A	LEVER HSG	-	POM GRAY 5	
2	2	2219542-1	A	DBL HSG	-	PBT NATURAL 4	
-	-	2287281-3	C	PLUG HSG. CODE C	15%	PBT NATURAL 3	
1	-	2287281-2	C	PLUG HSG. CODE B	15%	PBT GRAPHITE BLACK 2	
-	1	2287281-1	C	PLUG HSG. CODE A	15%	PBT NATURAL 1	
2287452-2	2287452-1	PART NO	REV	DESCRIPTION	REGRIND	MATERIAL COLOUR ITEM NO	
B	B	REVISION OF EACH ASSY NO (WHEN BLANK, USE DWG REVISION)					

THIS DRAWING IS A CONTROLLED DOCUMENT.		DMN: SUMIT B 04NOV2014																																																																																																																																																																												
DIMENSIONS: mm		CHK: RAJESH KOTI 04NOV2014																																																																																																																																																																												
TOLERANCES UNLESS OTHERWISE SPECIFIED		APVD: RAJESH KUMAR 04NOV2014	NAME: 56 POS. MIXED. REC HSG. 025. 090.ASSY																																																																																																																																																																											
<table border="1"> <tr><td>0</td><td>PLC</td><td>±</td></tr> <tr><td>1</td><td>PLC</td><td>±</td></tr> <tr><td>2</td><td>PLC</td><td>±</td></tr> <tr><td>3</td><td>PLC</td><td>±</td></tr> <tr><td>4</td><td>PLC</td><td>±</td></tr> <tr><td>5</td><td>PLC</td><td>±</td></tr> <tr><td>6</td><td>PLC</td><td>±</td></tr> <tr><td>7</td><td>PLC</td><td>±</td></tr> <tr><td>8</td><td>PLC</td><td>±</td></tr> <tr><td>9</td><td>PLC</td><td>±</td></tr> <tr><td>10</td><td>PLC</td><td>±</td></tr> <tr><td>11</td><td>PLC</td><td>±</td></tr> <tr><td>12</td><td>PLC</td><td>±</td></tr> <tr><td>13</td><td>PLC</td><td>±</td></tr> <tr><td>14</td><td>PLC</td><td>±</td></tr> <tr><td>15</td><td>PLC</td><td>±</td></tr> <tr><td>16</td><td>PLC</td><td>±</td></tr> <tr><td>17</td><td>PLC</td><td>±</td></tr> <tr><td>18</td><td>PLC</td><td>±</td></tr> <tr><td>19</td><td>PLC</td><td>±</td></tr> <tr><td>20</td><td>PLC</td><td>±</td></tr> <tr><td>21</td><td>PLC</td><td>±</td></tr> <tr><td>22</td><td>PLC</td><td>±</td></tr> <tr><td>23</td><td>PLC</td><td>±</td></tr> <tr><td>24</td><td>PLC</td><td>±</td></tr> <tr><td>25</td><td>PLC</td><td>±</td></tr> <tr><td>26</td><td>PLC</td><td>±</td></tr> <tr><td>27</td><td>PLC</td><td>±</td></tr> <tr><td>28</td><td>PLC</td><td>±</td></tr> <tr><td>29</td><td>PLC</td><td>±</td></tr> <tr><td>30</td><td>PLC</td><td>±</td></tr> <tr><td>31</td><td>PLC</td><td>±</td></tr> <tr><td>32</td><td>PLC</td><td>±</td></tr> <tr><td>33</td><td>PLC</td><td>±</td></tr> <tr><td>34</td><td>PLC</td><td>±</td></tr> <tr><td>35</td><td>PLC</td><td>±</td></tr> <tr><td>36</td><td>PLC</td><td>±</td></tr> <tr><td>37</td><td>PLC</td><td>±</td></tr> <tr><td>38</td><td>PLC</td><td>±</td></tr> <tr><td>39</td><td>PLC</td><td>±</td></tr> <tr><td>40</td><td>PLC</td><td>±</td></tr> <tr><td>41</td><td>PLC</td><td>±</td></tr> <tr><td>42</td><td>PLC</td><td>±</td></tr> <tr><td>43</td><td>PLC</td><td>±</td></tr> <tr><td>44</td><td>PLC</td><td>±</td></tr> <tr><td>45</td><td>PLC</td><td>±</td></tr> <tr><td>46</td><td>PLC</td><td>±</td></tr> <tr><td>47</td><td>PLC</td><td>±</td></tr> <tr><td>48</td><td>PLC</td><td>±</td></tr> <tr><td>49</td><td>PLC</td><td>±</td></tr> <tr><td>50</td><td>PLC</td><td>±</td></tr> <tr><td>51</td><td>PLC</td><td>±</td></tr> <tr><td>52</td><td>PLC</td><td>±</td></tr> <tr><td>53</td><td>PLC</td><td>±</td></tr> <tr><td>54</td><td>PLC</td><td>±</td></tr> <tr><td>55</td><td>PLC</td><td>±</td></tr> <tr><td>56</td><td>PLC</td><td>±</td></tr> </table>		0	PLC	±	1	PLC	±	2	PLC	±	3	PLC	±	4	PLC	±	5	PLC	±	6	PLC	±	7	PLC	±	8	PLC	±	9	PLC	±	10	PLC	±	11	PLC	±	12	PLC	±	13	PLC	±	14	PLC	±	15	PLC	±	16	PLC	±	17	PLC	±	18	PLC	±	19	PLC	±	20	PLC	±	21	PLC	±	22	PLC	±	23	PLC	±	24	PLC	±	25	PLC	±	26	PLC	±	27	PLC	±	28	PLC	±	29	PLC	±	30	PLC	±	31	PLC	±	32	PLC	±	33	PLC	±	34	PLC	±	35	PLC	±	36	PLC	±	37	PLC	±	38	PLC	±	39	PLC	±	40	PLC	±	41	PLC	±	42	PLC	±	43	PLC	±	44	PLC	±	45	PLC	±	46	PLC	±	47	PLC	±	48	PLC	±	49	PLC	±	50	PLC	±	51	PLC	±	52	PLC	±	53	PLC	±	54	PLC	±	55	PLC	±	56	PLC	±	APPLIC. SPEC: -	SIZE: A1
0	PLC	±																																																																																																																																																																												
1	PLC	±																																																																																																																																																																												
2	PLC	±																																																																																																																																																																												
3	PLC	±																																																																																																																																																																												
4	PLC	±																																																																																																																																																																												
5	PLC	±																																																																																																																																																																												
6	PLC	±																																																																																																																																																																												
7	PLC	±																																																																																																																																																																												
8	PLC	±																																																																																																																																																																												
9	PLC	±																																																																																																																																																																												
10	PLC	±																																																																																																																																																																												
11	PLC	±																																																																																																																																																																												
12	PLC	±																																																																																																																																																																												
13	PLC	±																																																																																																																																																																												
14	PLC	±																																																																																																																																																																												
15	PLC	±																																																																																																																																																																												
16	PLC	±																																																																																																																																																																												
17	PLC	±																																																																																																																																																																												
18	PLC	±																																																																																																																																																																												
19	PLC	±																																																																																																																																																																												
20	PLC	±																																																																																																																																																																												
21	PLC	±																																																																																																																																																																												
22	PLC	±																																																																																																																																																																												
23	PLC	±																																																																																																																																																																												
24	PLC	±																																																																																																																																																																												
25	PLC	±																																																																																																																																																																												
26	PLC	±																																																																																																																																																																												
27	PLC	±																																																																																																																																																																												
28	PLC	±																																																																																																																																																																												
29	PLC	±																																																																																																																																																																												
30	PLC	±																																																																																																																																																																												
31	PLC	±																																																																																																																																																																												
32	PLC	±																																																																																																																																																																												
33	PLC	±																																																																																																																																																																												
34	PLC	±																																																																																																																																																																												
35	PLC	±																																																																																																																																																																												
36	PLC	±																																																																																																																																																																												
37	PLC	±																																																																																																																																																																												
38	PLC	±																																																																																																																																																																												
39	PLC	±																																																																																																																																																																												
40	PLC	±																																																																																																																																																																												
41	PLC	±																																																																																																																																																																												
42	PLC	±																																																																																																																																																																												
43	PLC	±																																																																																																																																																																												
44	PLC	±																																																																																																																																																																												
45	PLC	±																																																																																																																																																																												
46	PLC	±																																																																																																																																																																												
47	PLC	±																																																																																																																																																																												
48	PLC	±																																																																																																																																																																												
49	PLC	±																																																																																																																																																																												
50	PLC	±																																																																																																																																																																												
51	PLC	±																																																																																																																																																																												
52	PLC	±																																																																																																																																																																												
53	PLC	±																																																																																																																																																																												
54	PLC	±																																																																																																																																																																												
55	PLC	±																																																																																																																																																																												
56	PLC	±																																																																																																																																																																												
MATERIAL: SEE TABLE		WEIGHT: 16.3 GRAM	RESTRICTED TO: -																																																																																																																																																																											
FINISH: -		Customer Drawing	SCALE: 2:1 SHEET 1 OF 1 REV: B2																																																																																																																																																																											