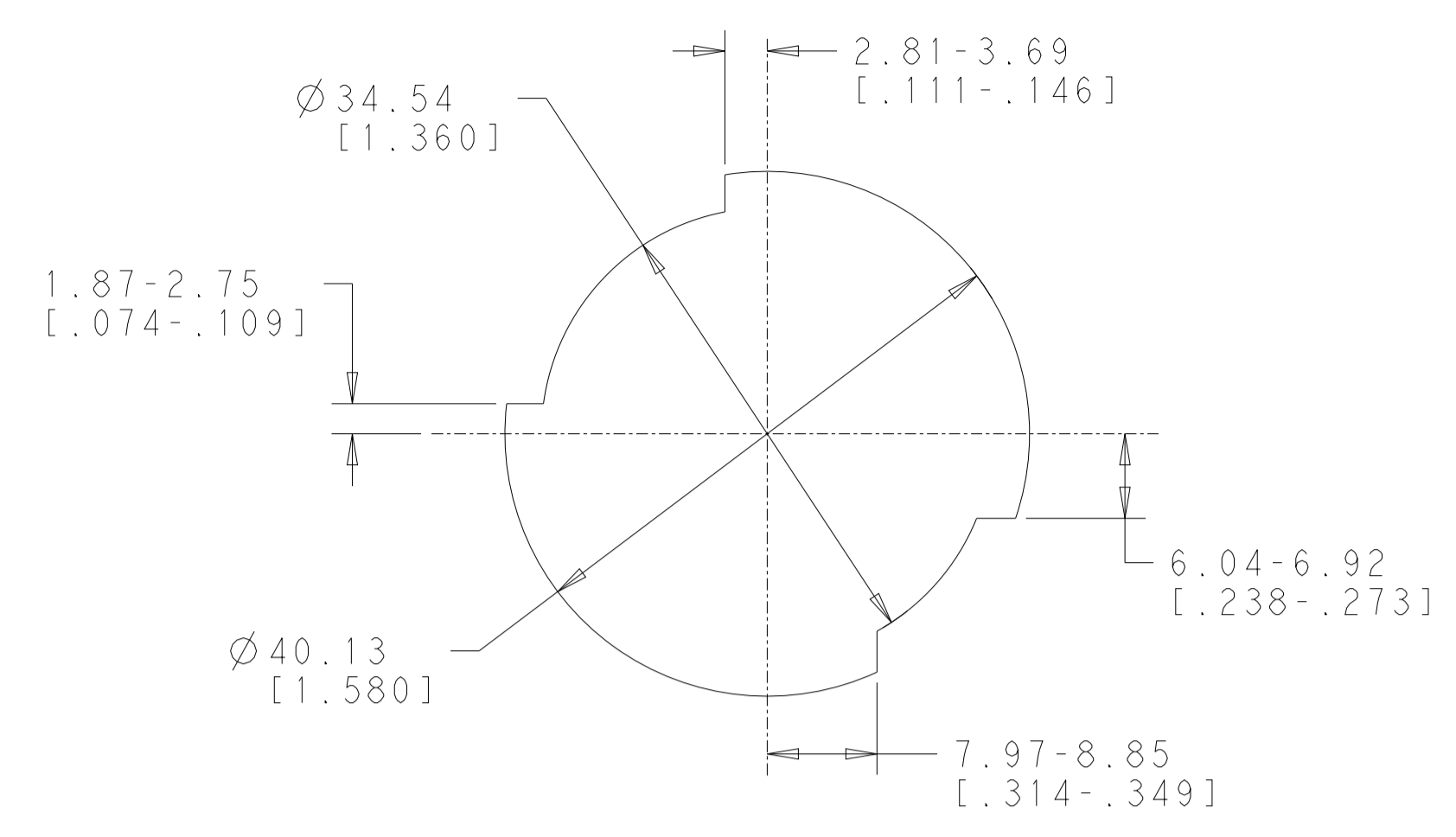
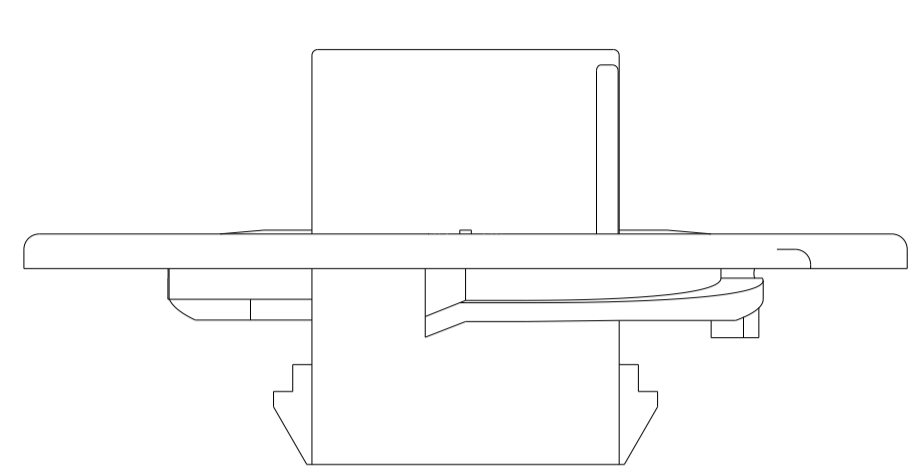
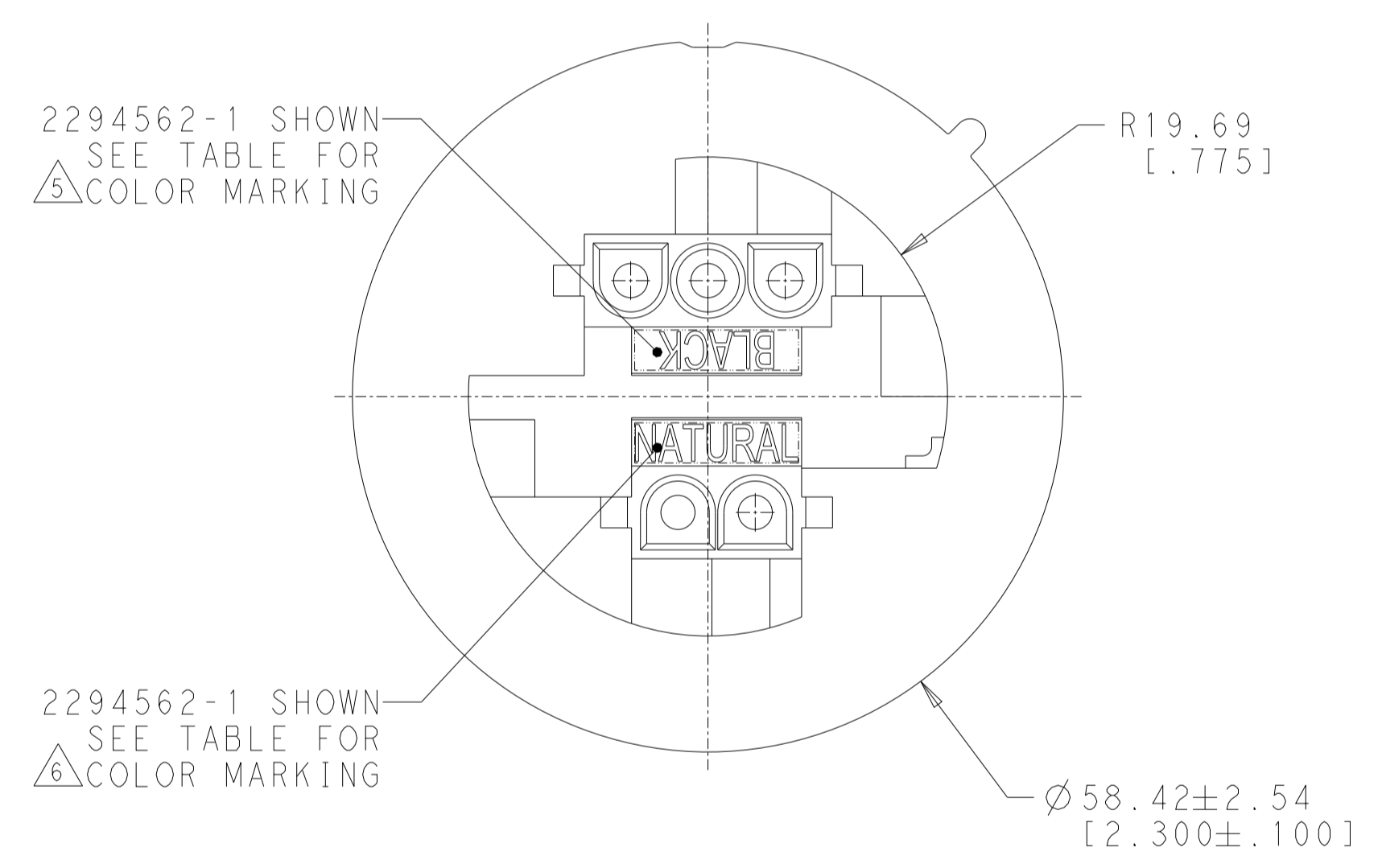
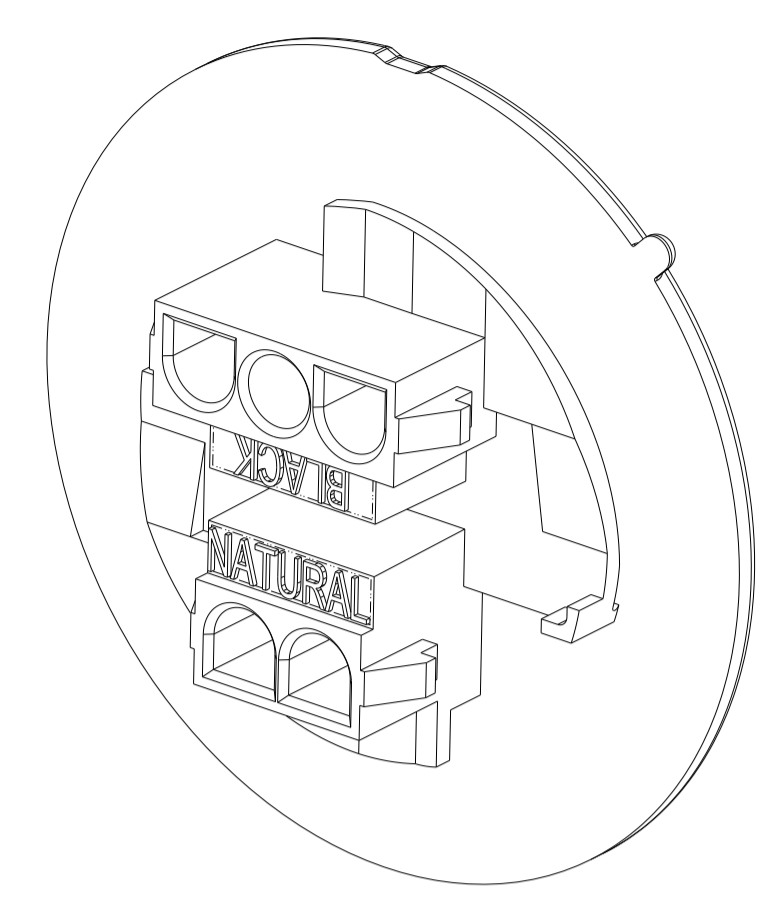


REVISIONS				
P	LTN	DESCRIPTION	DATE	APVD
B1		REVISED PER ECR-22-139440	08JUN2022	SS VS
B2		REVISED PER ECR-22-159989	30NOV2022	RS RB
B3		REVISED PER ECR-23-183769	09AUG2023	RS BR
B4		REVISED PER ECR-24-200966	23FEB2024	RS BR

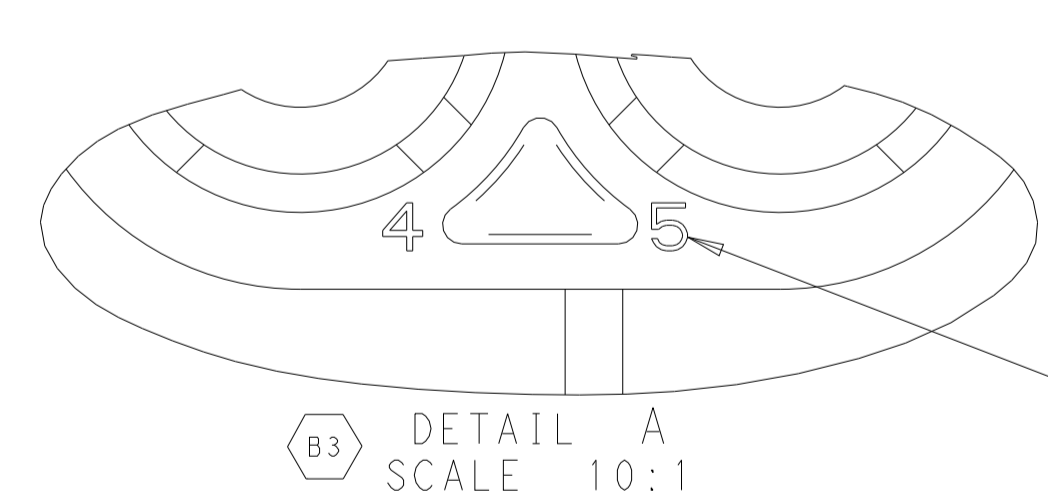
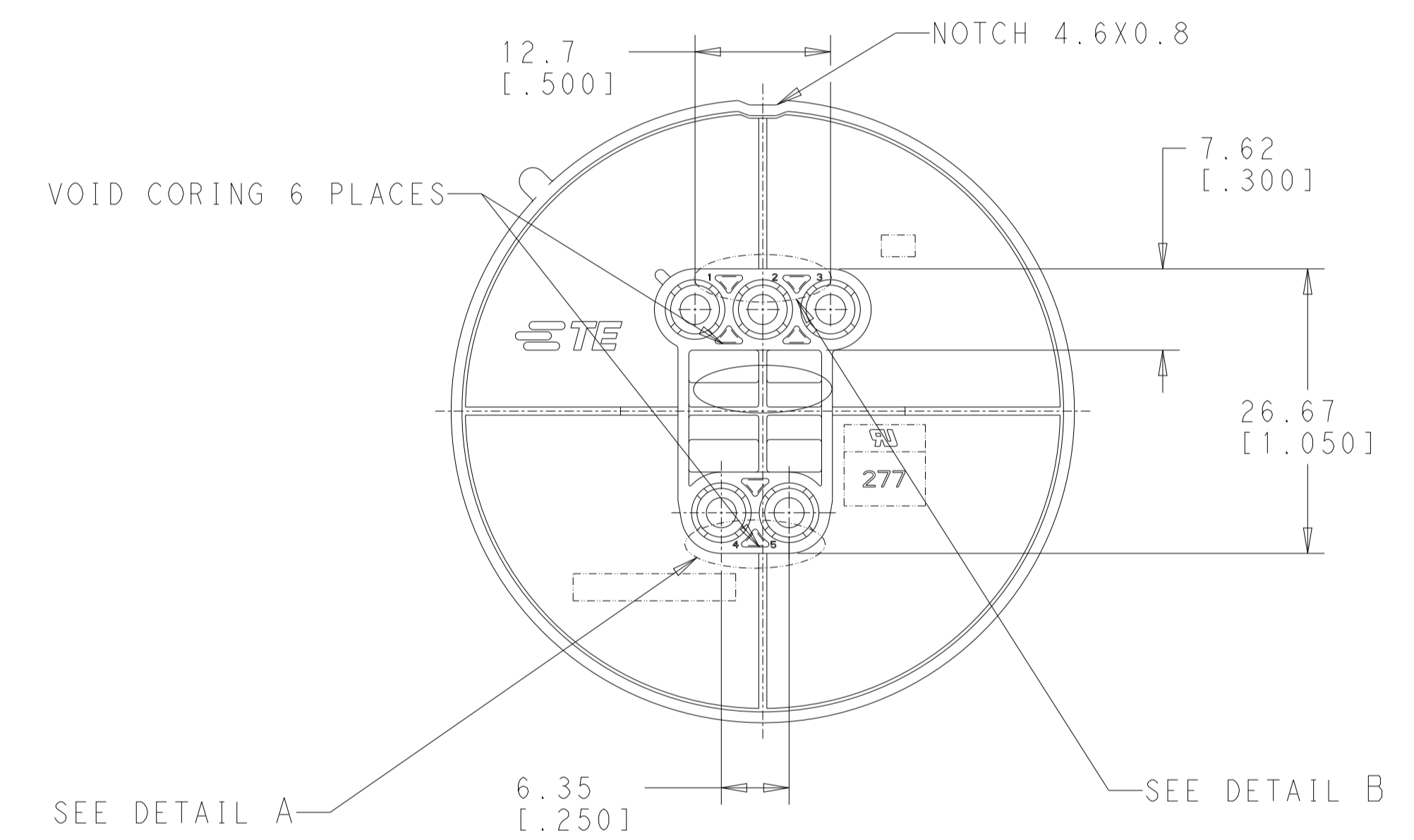
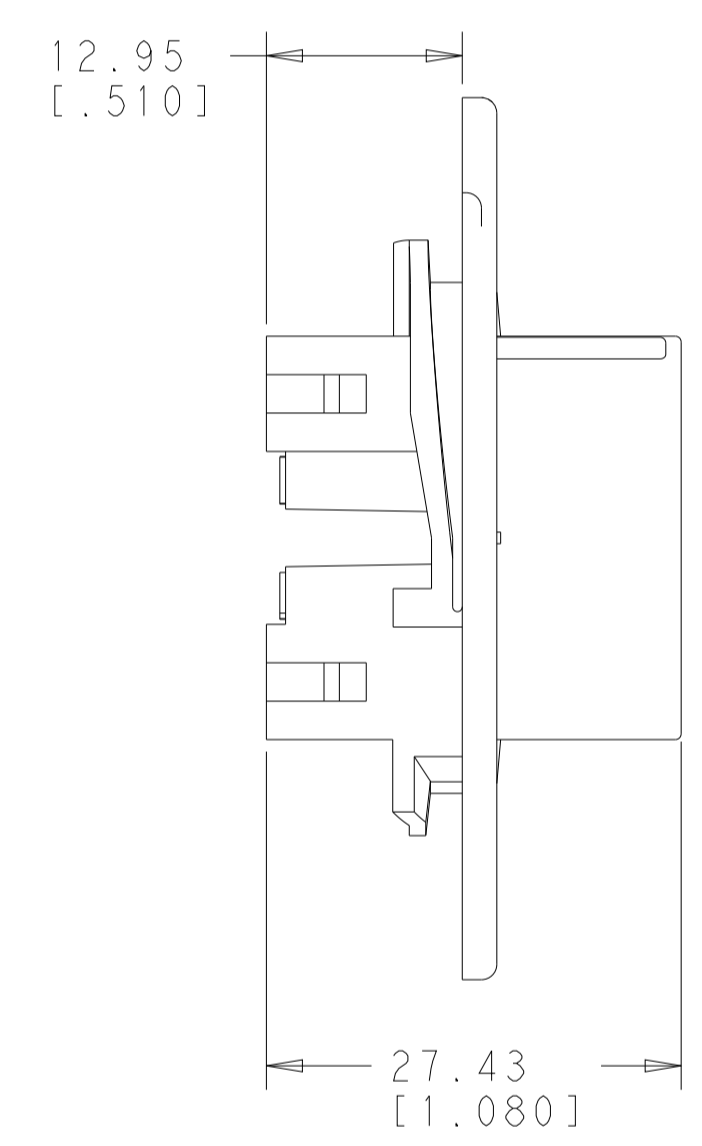


RECOMMENDED PANEL CUTOUT  $\triangle$

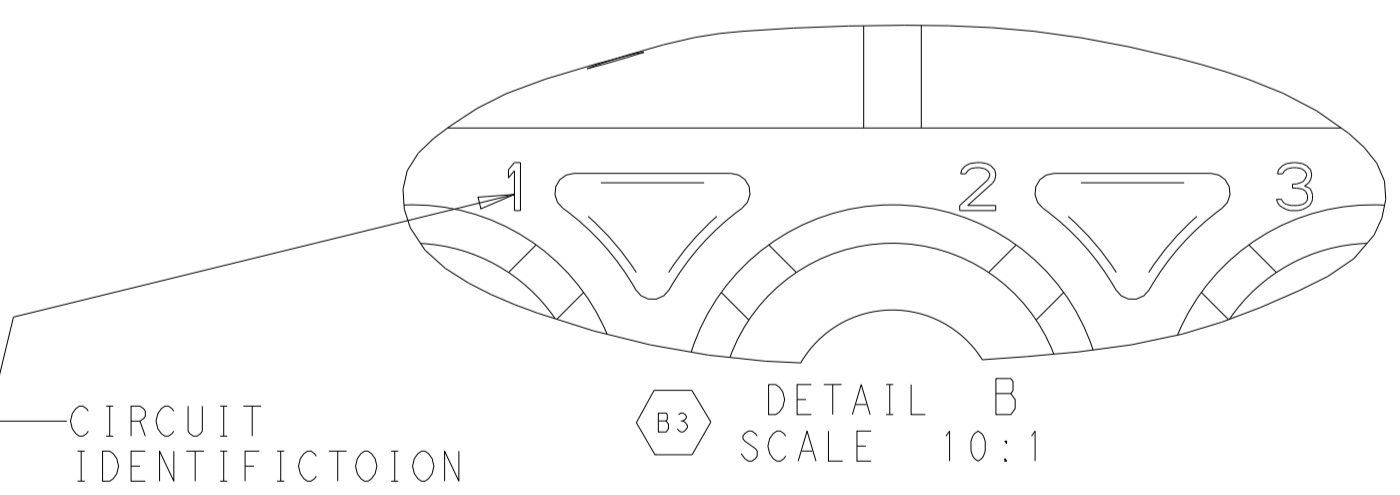


2294562-1 SHOWN  
SEE TABLE FOR  
 $\triangle$  COLOR MARKING

2294562-1 SHOWN  
SEE TABLE FOR  
 $\triangle$  COLOR MARKING



$\triangle$  B3 DETAIL A  
SCALE 10:1



$\triangle$  B3 DETAIL B  
SCALE 10:1

- 1 MATES WITH APPROPRIATE 2 POSITION AND 3 POSITION UNIVERSAL MATE-N-LOK PLUG HOUSINGS.
- $\triangle$  2 RECOMMENDED PANEL THICKNESS 0.76-1.91 [.030-.075].
- 3 PANEL MUST BE PUNCHED SO THAT THE HOUSING ENTERS THE PANEL IN THE SAME DIRECTION AS THE PUNCH.
- 4 DIMENSIONS SHOWN REPRESENT PRODUCT IN DRY, AS MOLDED, CONDITION. ADDITIONAL 2% GROWTH DUE TO SUBSEQUENT MOISTURE ABSORPTION MAY OCCUR AND SHOULD BE ACCOUNTED FOR.
- $\triangle$  3 3 POSITION MATING PART COLOR CODING MARKING, SEE TABLE.
- $\triangle$  2 2 POSITION MATING PART COLOR CODING MARKING, SEE TABLE.
- $\triangle$  1 THIS PRODUCT HAS NOT COMPLETED QUALIFICATION TESTING.
- $\triangle$  8 PRELIMINARY PART-NOT RELEASED FOR PRODUCTION
- $\triangle$  9 GLOW-WIRE TEST 750°C (WITHOUT FALME) ACCORDING TO IEC60335-1

$\triangle$ 6 COLOR MARKING	$\triangle$ 3 COLOR MARKING	RESIN COLOR	PART NO.
BROWN	RED	RED	$\triangle$ 9 1-2294562-2
NATURAL	BLACK	NATURAL	$\triangle$ 9 1-2294562-1
BROWN	RED	RED	2294562-2
NATURAL	BLACK	NATURAL	2294562-1

THIS DRAWING IS A CONTROLLED DOCUMENT.

DIMENSIONS:	TOLERANCES UNLESS OTHERWISE SPECIFIED:	OWN: RODNEY SMITH 12APR16	CHK: EVAN WICKES 12APR16	APVD: EVAN WICKES 12APR16	NAME: CAP, 2 AND 3 CIRCUIT UNIVERSAL MATE-N-LOK, SPECIAL
1 IN	0 PLC ±.01	108-1031	114-1010	114-1010	SIZE: A1
2 PLC ±0.51 [.020]	3 PLC ±0.51 [.020]	114-1010	114-1010	114-1010	CAGE CODE: -
3 PLC ±.01	4 PLC ±.01	114-1010	114-1010	114-1010	DRAWING NO: C=2294562
4 PLC ±.01	ANGLES ±.01	114-1010	114-1010	114-1010	SCALE: 2:1
MATERIAL: NYLON, V2	FINISH: -	114-1010	114-1010	114-1010	SHEET: 1 OF 1
CUSTOMER DRAWING			REV: B4		

STE TE Connectivity