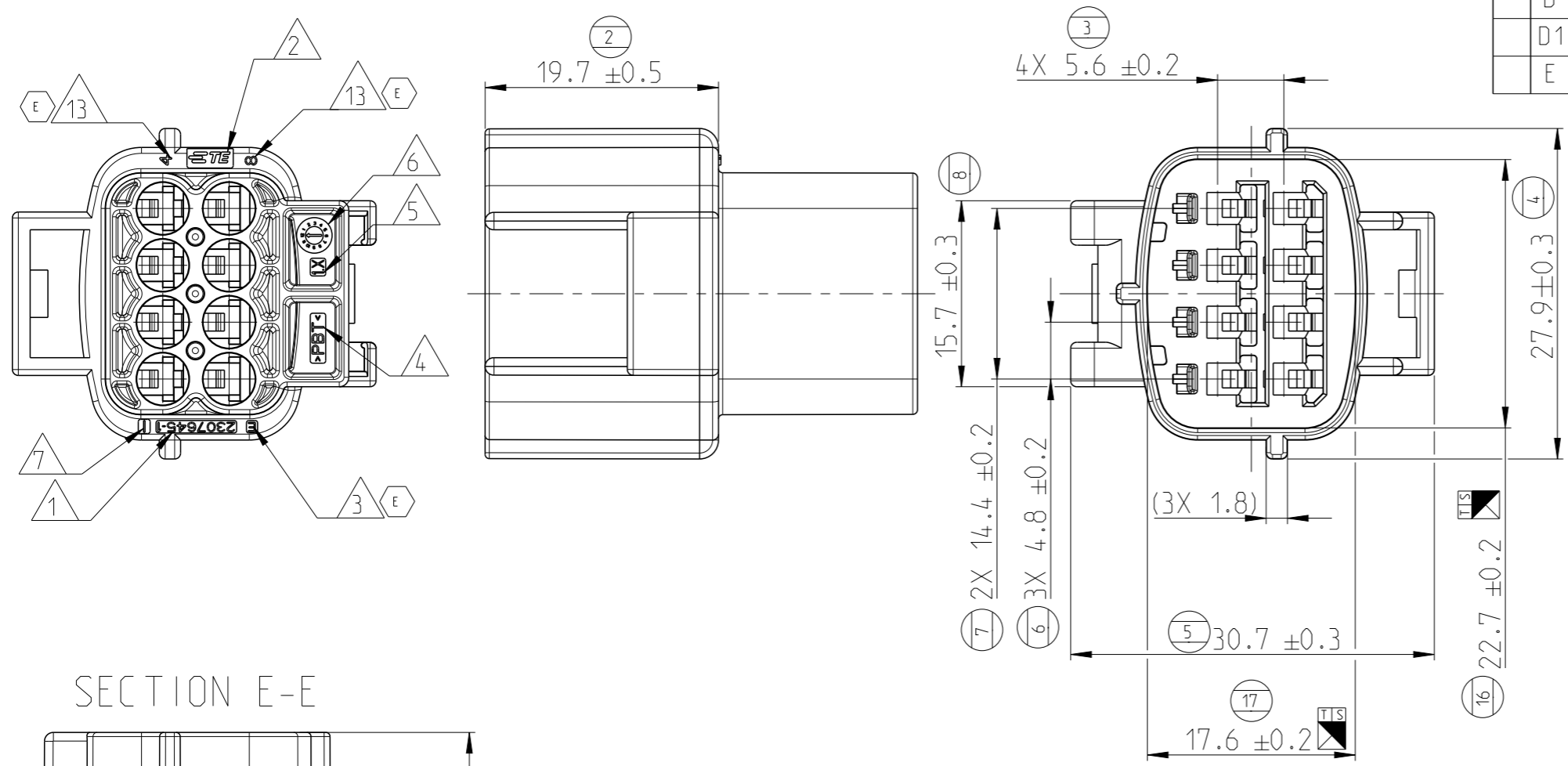


REVISIONS

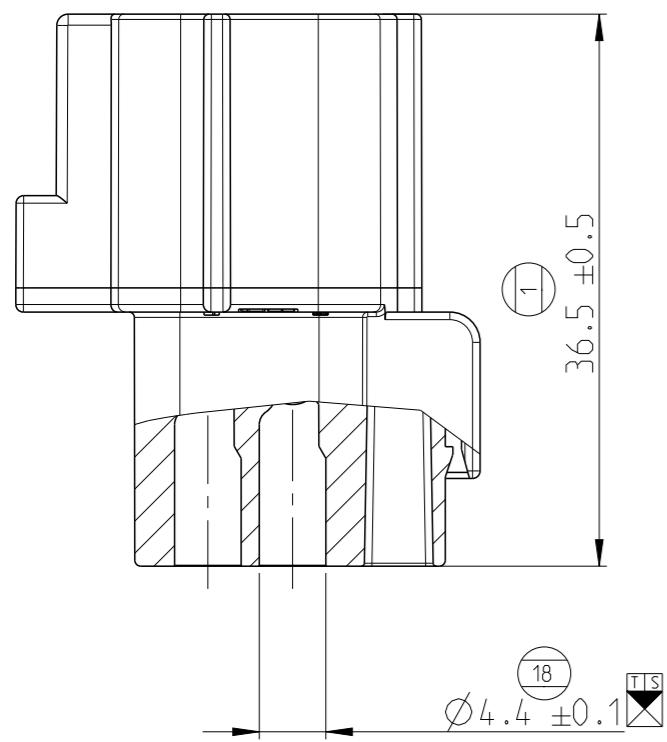
P	LTR	DESCRIPTION	DATE	DWN	APVD
B		AS PER ECR-17-006143	28APR2017	CHS	VVB
D		AS PER ECR-18-007526	18JUL2018	CHS	VVB
D1		AS PER ECR-19-009305	13JUN2019	CHS	VVB
E		AS PER ECR-20-000074	29JAN2020	MS	DH



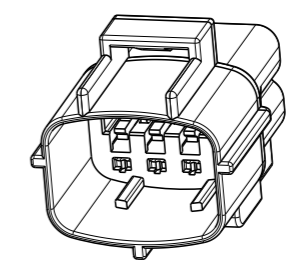
NOTES:

- ⑨ ① TE CONNECTIVITY PART NUMBER
- ⑩ ② TE CONNECTIVITY TRADEMARK
- ⑪ ③ PART REVISION INDEX - SEE TABLE
- ⑫ ④ MATERIAL MARKING
- ⑬ ⑤ MOLD CAVITY IDENTIFICATION NUMBER
- ⑭ ⑥ PRODUCTION DATE
- ⑮ ⑦ MATERIAL IDENTIFIER
- 8. MATED WITH PLUG HOUSING ASSEMBLY P/N: 2307642-1
- 9. THIS PART MUST BE USED WITH DOUBLE LOCK PLATE P/N 2307646-1
- 10. FOR DETAILS OF APPLICABLE TERMINALS, SINGLE WIRE SEAL AND WIRE TYPE - SEE PRODUCT SPEC. : 108-94594 OR EJ MK II SEALED CONNECTOR CATALOGUE
- 11. FOR CRIMP DETAILS- SEE APPLICATION SPEC. 114-94473
- 12. BULK PACKAGING IN CORUGATED BOX
- ⑮ ⑦ MATERIAL IDENTIFIER
- ⑯ ⑰ CONTACT CAVITY IDENTIFICATION.

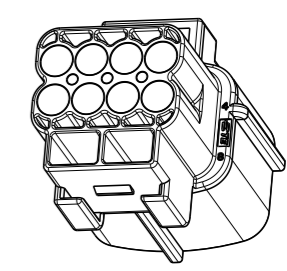
SECTION E-E



SCALE 1:1



SCALE 1:1



TE PART NO.	PART REV.	MATERIAL	COLOR	DESCRIPTION	ITEM No
2307645-1	E	PBT	BLACK	8P CAP HOUSING	1

THIS DRAWING IS A CONTROLLED DOCUMENT.		DWN	24OCT2016	 TE Connectivity	NAME 8POS. CAP HOUSING ECONOSEAL J-MARK CONNECTOR												
DIMENSIONS: mm		CHK	25OCT2016														
TOLERANCES UNLESS OTHERWISE SPECIFIED: ±0.15		APVD	25OCT2016														
<table border="1"> <tr><td>0 PLC</td><td>±</td></tr> <tr><td>1 PLC</td><td>±</td></tr> <tr><td>2 PLC</td><td>±</td></tr> <tr><td>3 PLC</td><td>±</td></tr> <tr><td>4 PLC</td><td>±</td></tr> <tr><td>ANGLES</td><td>±</td></tr> <tr><td>FINISH</td><td>-</td></tr> </table>		0 PLC	±			1 PLC	±	2 PLC	±	3 PLC	±	4 PLC	±	ANGLES	±	FINISH	-
0 PLC	±																
1 PLC	±																
2 PLC	±																
3 PLC	±																
4 PLC	±																
ANGLES	±																
FINISH	-																
MATERIAL SEE TABLE		APPLICATION SPEC	114-94473	SIZE	A3												
		WEIGHT	7.6 g	CAGE CODE	-												
		CUSTOMER DRAWING		DRAWING NO	⑮-2307645												
				RESTRICTED TO	-												
				SCALE	2:1												
				SHEET	1 OF 1												
				REV	E												