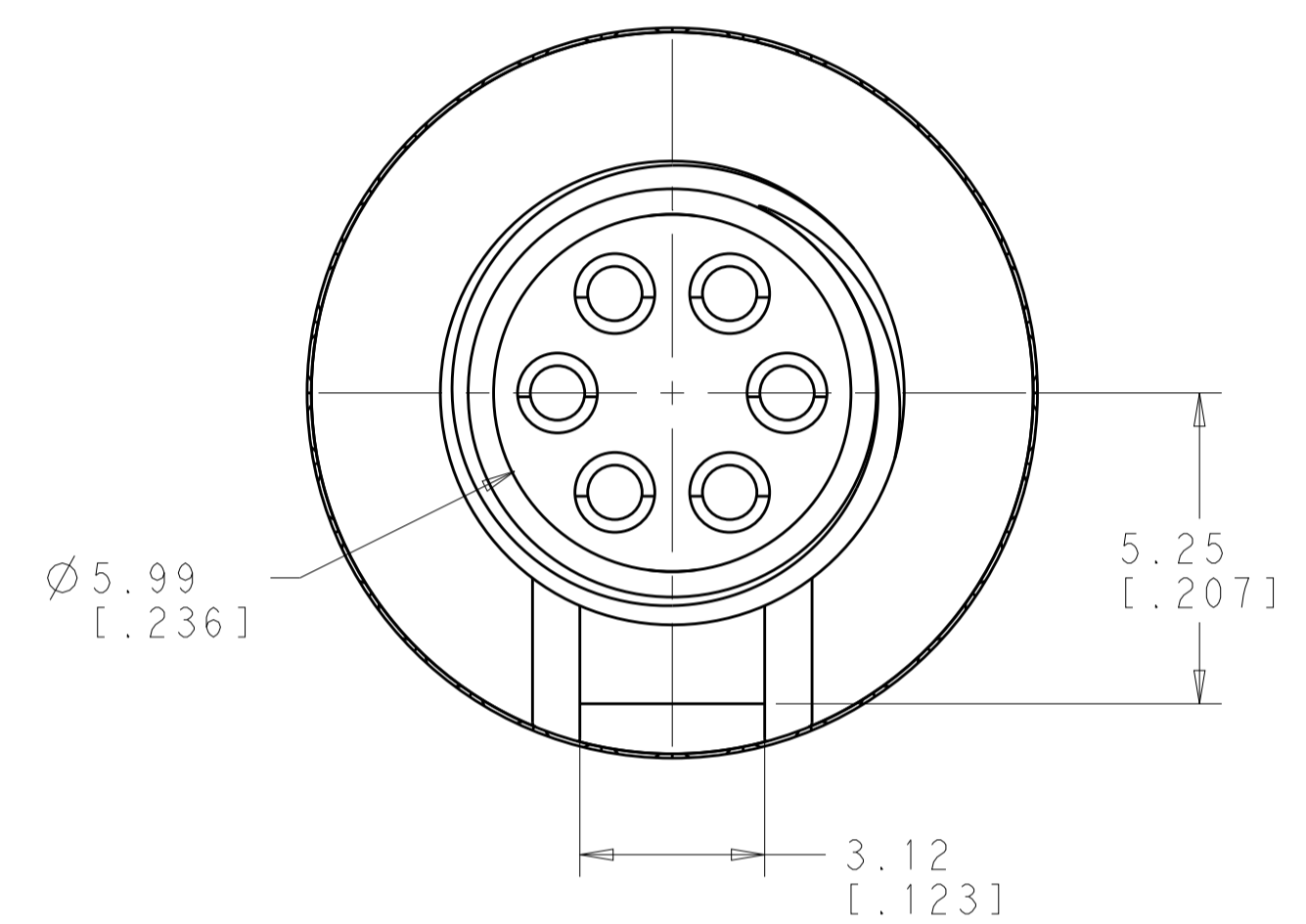
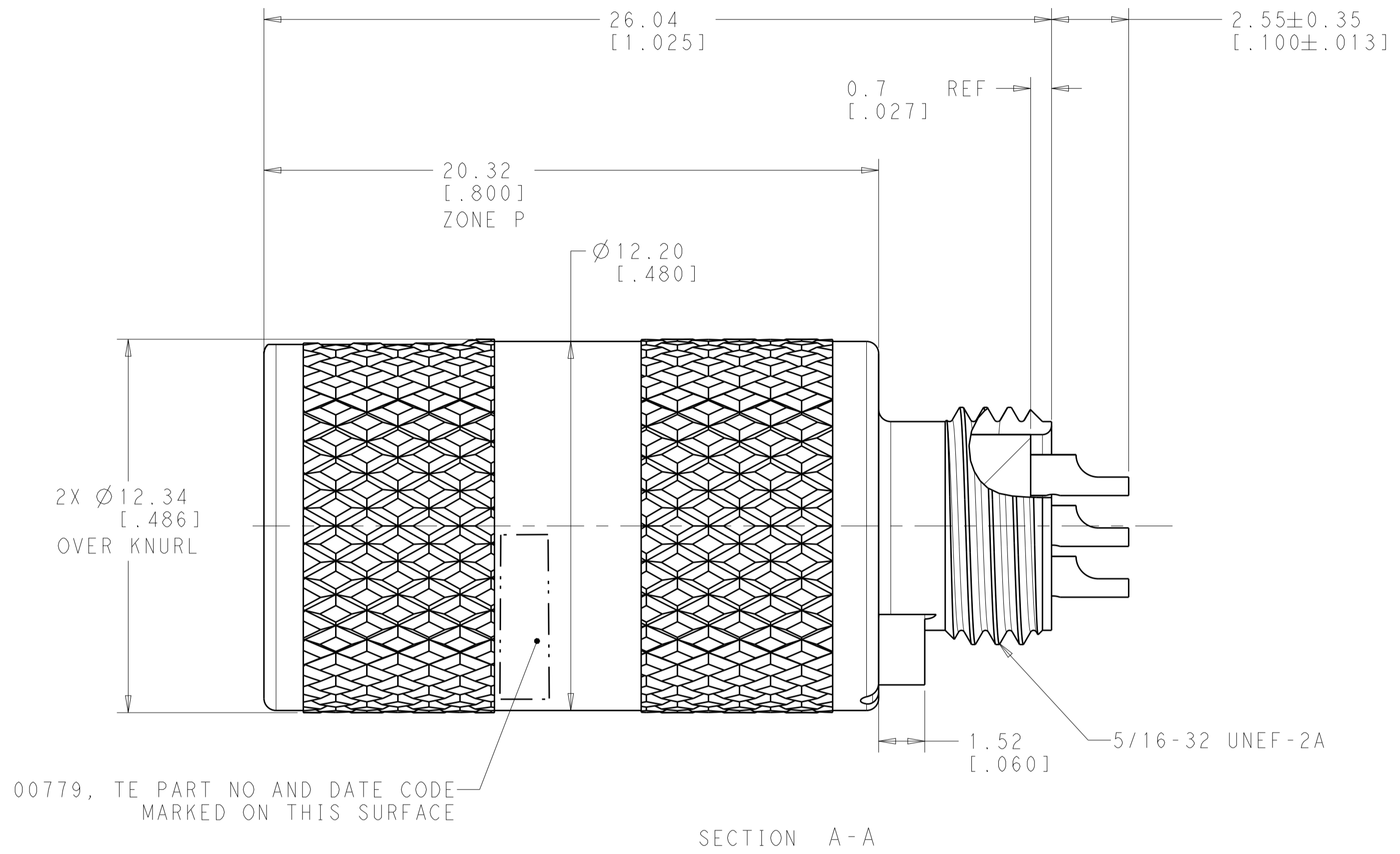
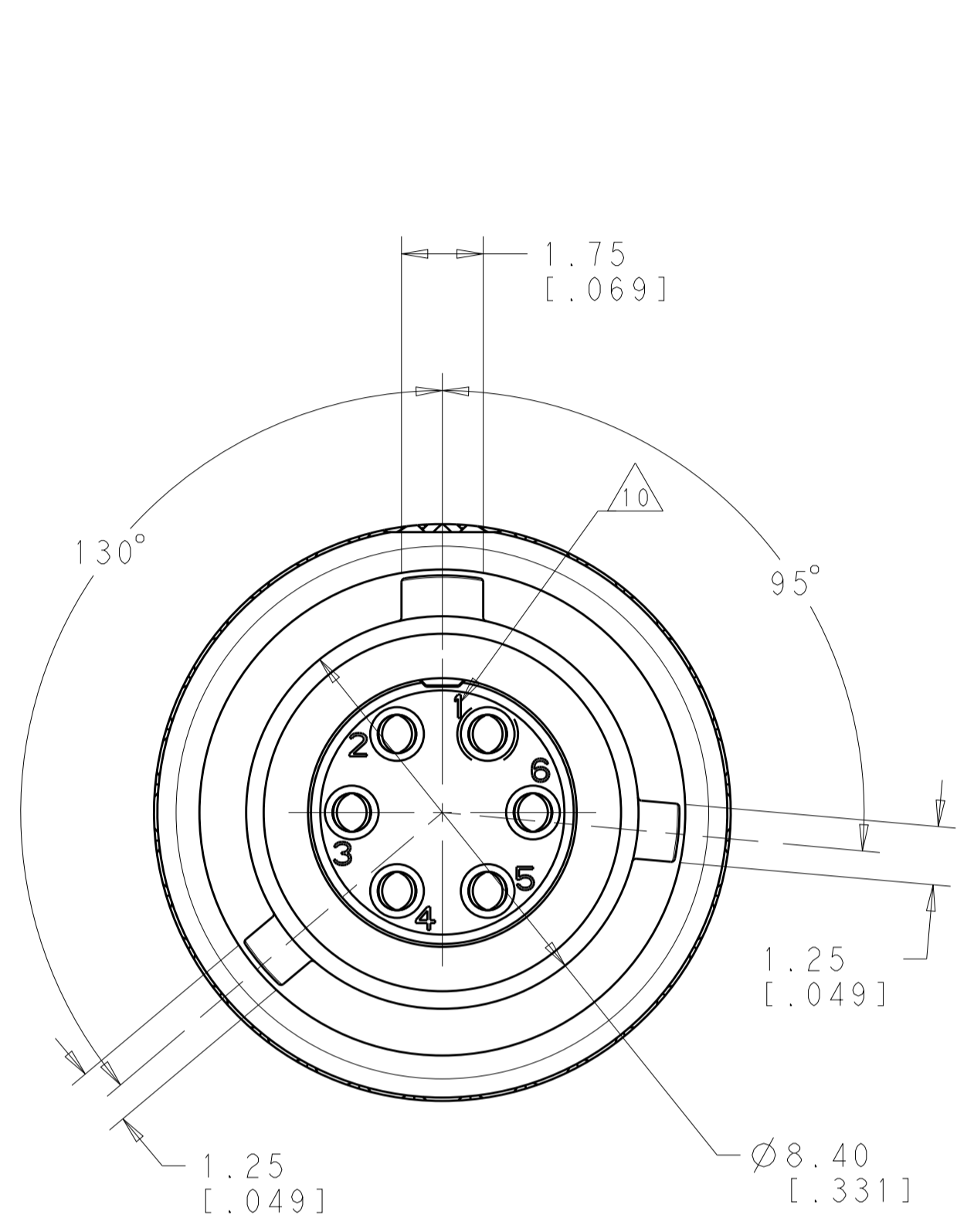


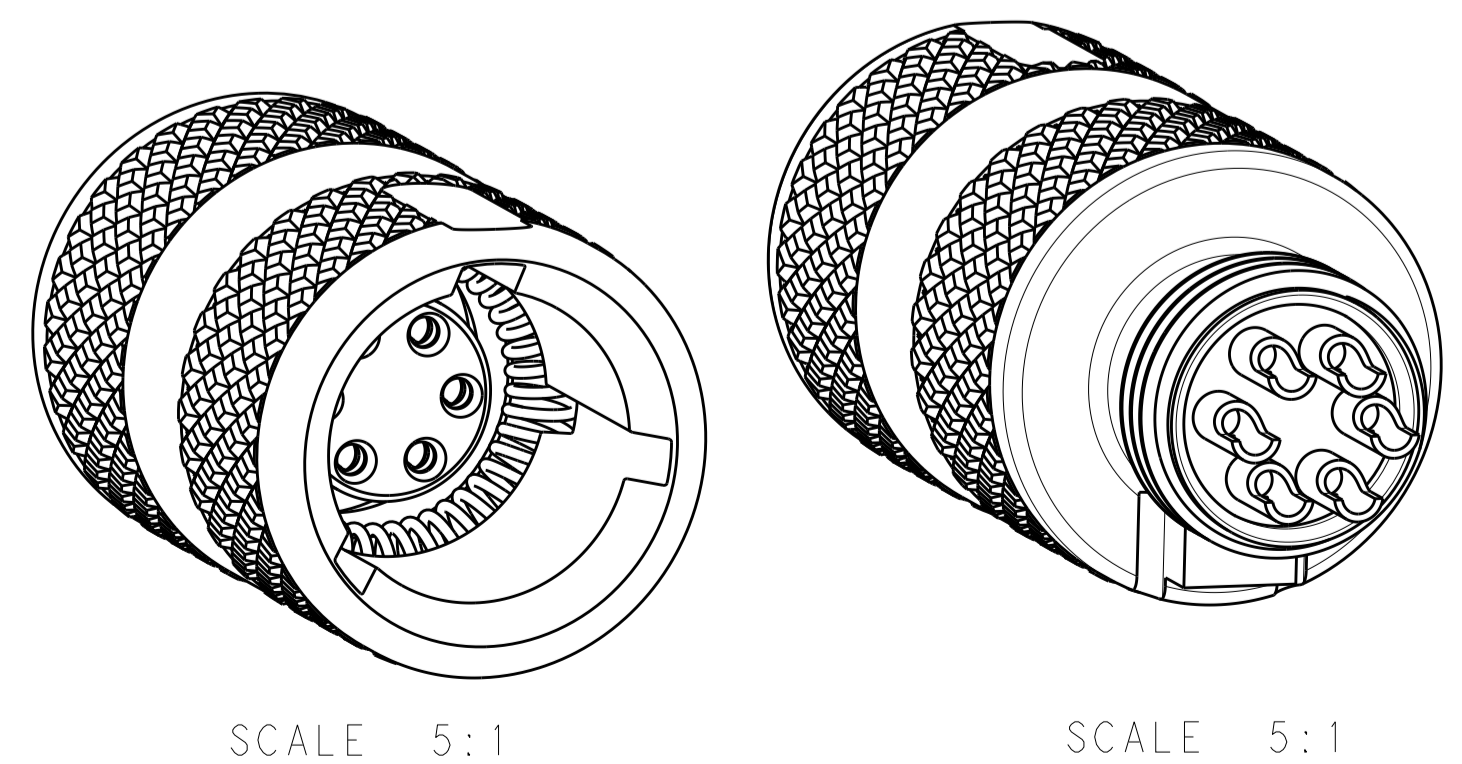
REVISIONS				
P.	LTM	DESCRIPTION	DATE	APVD
1		INITIAL PROPOSAL	09OCT2017	KM DM
2		26.04 WAS 29.21; 1.52 WAS 1.78	31OCT2017	KM DM



00779, TE PART NO AND DATE CODE MARKED ON THIS SURFACE

SECTION A-A

- TE MATING CONNECTOR PART NUMBER 2226910-1.
  - SHELL FINISH: SELECTIVE PLATE 12.7µm MIN ZINC-NICKEL (EXTERIOR ONLY IN ZONE P) OVER 12.7µm MIN ELECTROLESS NICKEL ALL OVER.
  - ROHS COMPLIANT.
  - MATERIALS: ALUMINUM ALLOY, THERMOPLASTIC AND EPOXY.
  - CONNECTOR SHALL MEET ENVIRONMENTAL REQUIREMENTS PER MIL-STD-810G.
  - SIZE 23 SOCKET CONTACTS WITH SOLDER CUP TO ACCOMMODATE 22,24,26, AND 28 GAUGE WIRE.
  - CONNECTOR SHIPPED WITH DUST CAPS.
  - MARKINGS PER MIL-STD-202, METHOD 215.
  - UNLESS OTHERWISE SPECIFIED, ALL DIMENSIONS ARE FOR REFERENCE ONLY.
- △(10) CIRCUIT ID MARKINGS, PARENTHESIS AROUND CAVITY NO. 1.



SCALE 5:1

SCALE 5:1

THIS PRINT IS  
**PRELIMINARY**  
 UNQUALIFIED PRODUCT  
 CONTACT PRODUCT ENGINEERING  
 BEFORE USING THIS PRINT

2313320-1  
 PART NO

THIS DRAWING IS A CONTROLLED DOCUMENT.		DWN: R. MILLER 03OCT2017	STE		TE Connectivity	
DIMENSIONS: mm [INCHES]		CHK: D. MILLER 09OCT2017	NAME: RECEPTACLE CONNECTOR ASSEMBLY		RESTRICTED TO	
TOLERANCES UNLESS OTHERWISE SPECIFIED:		APVD: -	PRODUCT SPEC: NETT WARRIOR		-	
0 PLC ±		APPLICATION SPEC: ANTI-ROTATION; SOLDER CUP	SIZE: A1		CAGE CODE: 2313320	
1 PLC ±		WEIGHT: -	SCALE: 8:1		SHEET 1 OF 1	
2 PLC ±0.131(.005)		CUSTOMER DRAWING	REV: 2			
3 PLC ±						
4 PLC ±						
ANGLES ±						
FINISH -						