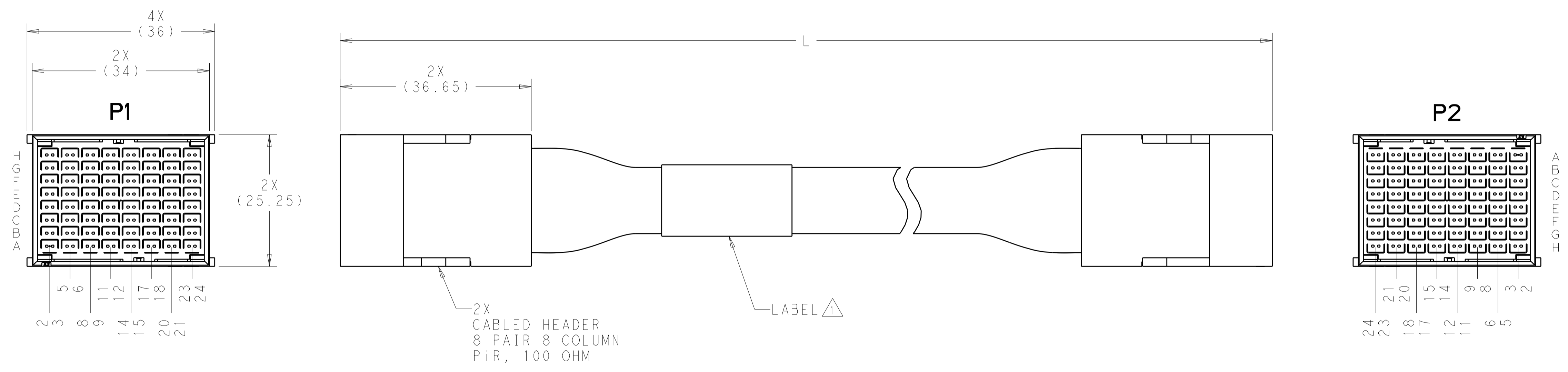
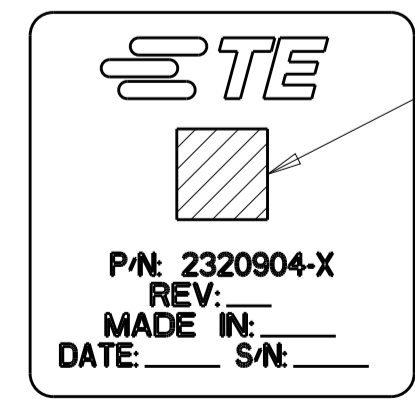


REVISIONS				
P.	LTN	DESCRIPTION	DATE	APVD
1		PROPOSED	07JUN2017	REH KS



△ LABEL INFORMATION:



BARCODE INFO:
 2320904-dxxwyysss
 d=DASH NUMBER
 xx=MANUFACTURING SITE
 US=UNITED STATES, CN=CHINA, MX=MEXICO
 ww=WEEK
 yy=YEAR
 sss=SERIAL NUMBER 000 THRU 999

1508	6-2320904-6
1008	5-2320904-6
508	3-2320904-6
L±3	PART NUMBER

2. EACH CABLE ASSEMBLY TESTED FOR CONTINUITY, OPENS AND SHORTS.
3. SEE SHEET 2 FOR WIRING DIAGRAM.
4. EACH HIGH SPEED CABLET TESTED ON NETWORK ANALYZER, SERIALIZED, AND DATA SAVED.

THIS PRODUCT HAS NOT COMPLETED VALIDATION AND QUALIFICATION TESTING

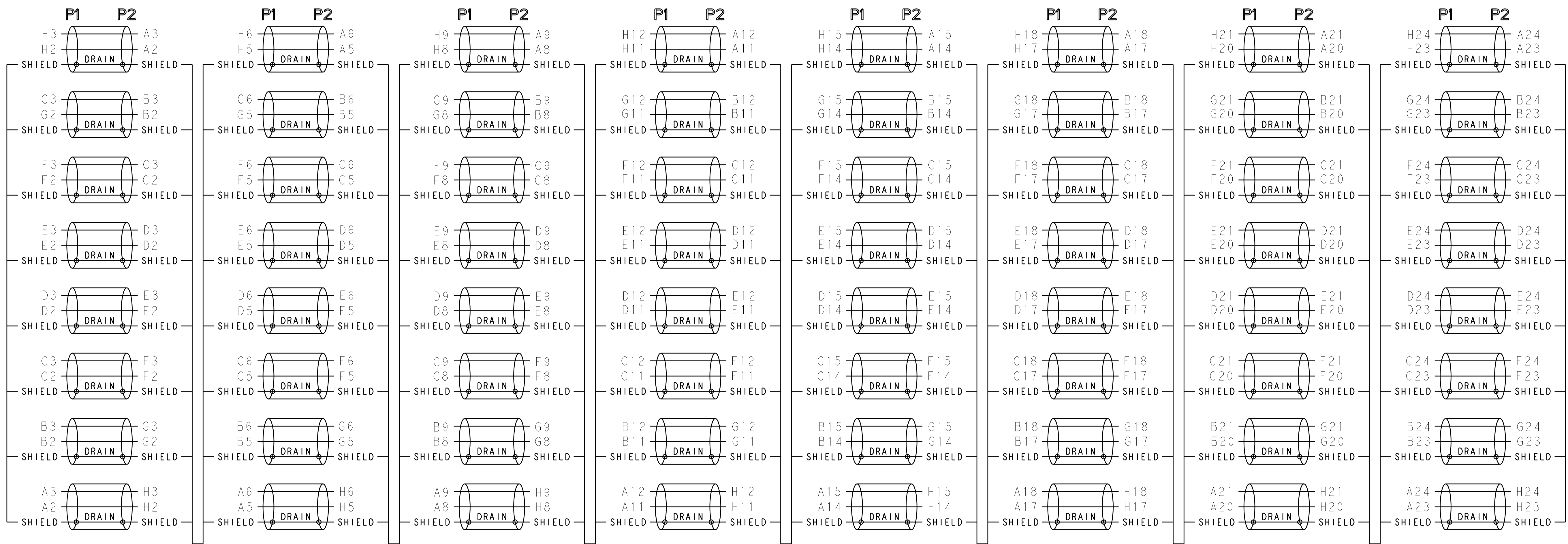
PRELIMINARY NOT RELEASED FOR PRODUCTION

DIMENSIONS:		TOLERANCES UNLESS OTHERWISE SPECIFIED:		APVD		NAME	
mm	0 PLC ±	1 PLC ±	2 PLC ±	3 PLC ±	4 PLC ±	APVD	NAME
ANGLES	FINISH	WEIGHT	SCALE	SHEET	OF	REV	

Customer Drawing

REVISIONS				
P.	LTR.	DESCRIPTION	DATE	APVD.
-	-	SEE SHEET 1	-	-

WIRING DIAGRAM



THIS PRODUCT HAS NOT COMPLETED VALIDATION AND QUALIFICATION TESTING

PRELIMINARY NOT RELEASED FOR PRODUCTION

THIS DRAWING IS A CONTROLLED DOCUMENT.		OWN: HAMNER 07JUN2017	TE Connectivity
DIMENSIONS: mm		CHK: K. SAMMON 08JUN2017	
TOLERANCES UNLESS OTHERWISE SPECIFIED:		APVD: K. SAMMON 08JUN2017	NAME: CABLE ASSEMBLY, 100 OHM, PiR, 8 PAIR, 8 COLUMN, 20G, 2-2 WIRING, A-H SIZE: A1 CAGE CODE: C=2320904 SCALE: 2:1 SHEET 2 OF 2 REV 1
0 PLC ± 2 PLC ± 3 PLC ± 4 PLC ± ANGLES ±		PRODUCT SPEC: APPLICATION SPEC: WEIGHT: Customer Drawing	
MATERIAL: FINISH:		RESTRICTED TO:	