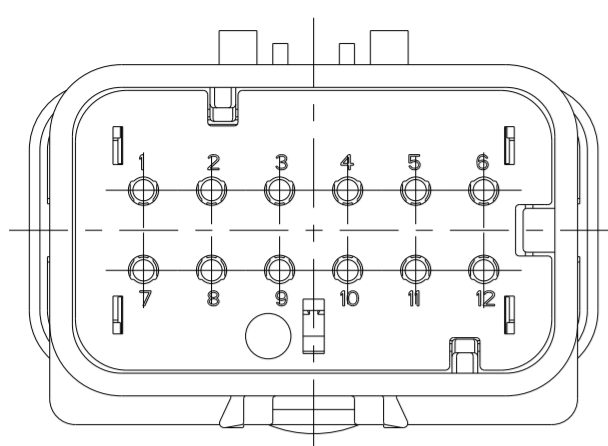
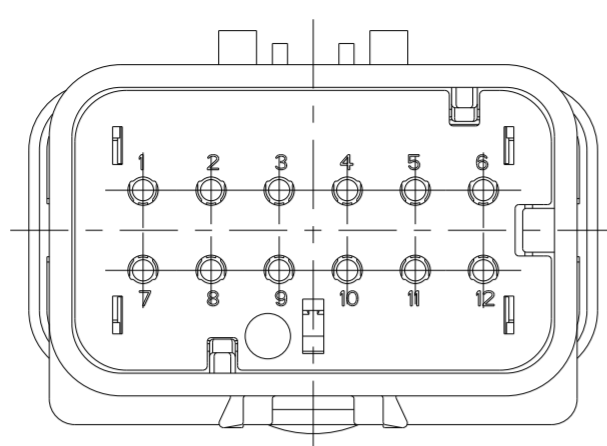


THIS DRAWING IS UNPUBLISHED. RELEASED FOR PUBLICATION
 © COPYRIGHT - ALL RIGHTS RESERVED.

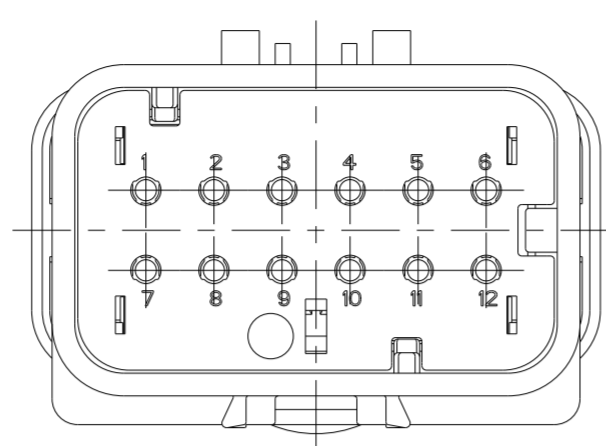
REVISIONS					
P	LTR	DESCRIPTION	DATE	DWN	APVD
	A	NEW RELEASE	07APR2021	MK	BC



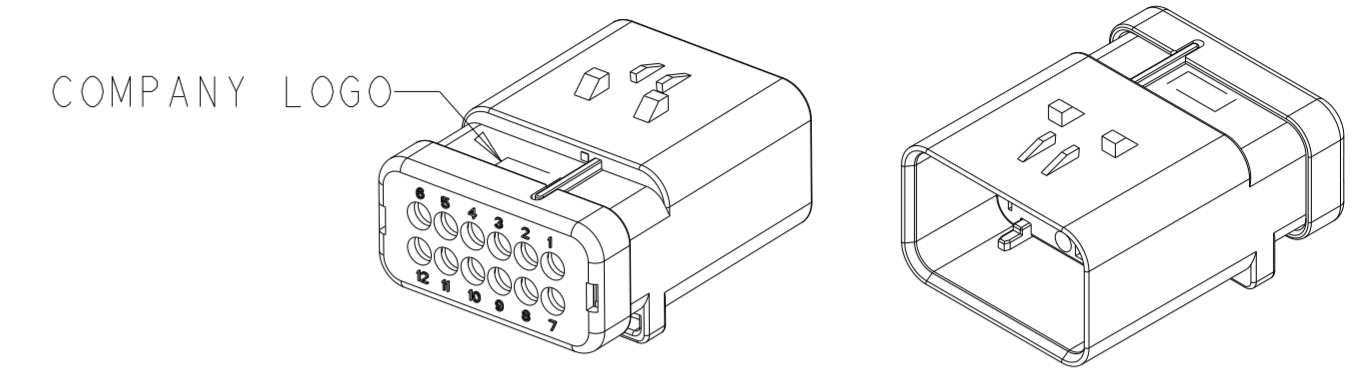
2320918-2
KEY B
SCALE 2:1



2320918-3
KEY C
SCALE 2:1

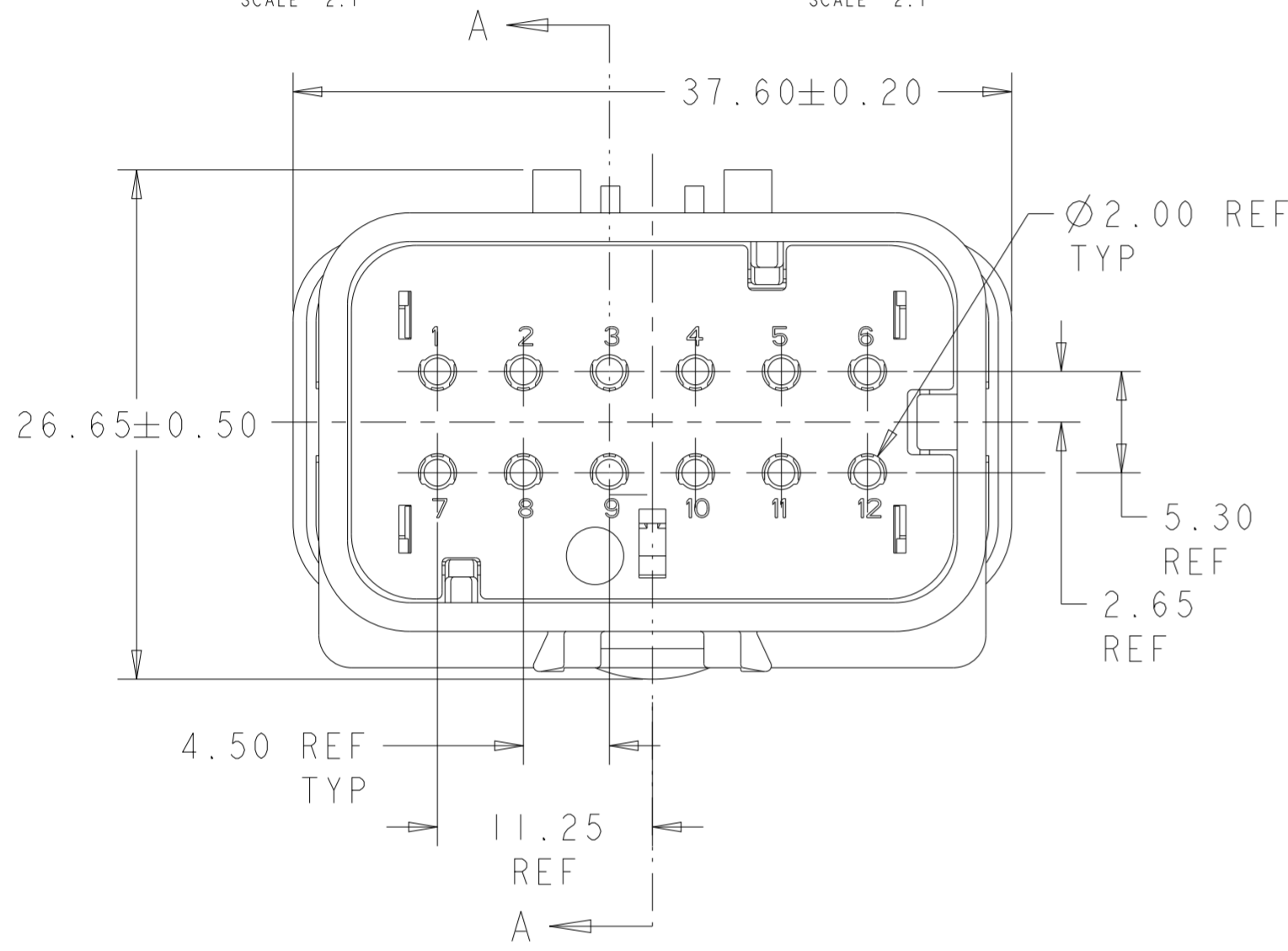


2320918-4
KEY D
SCALE 2:1

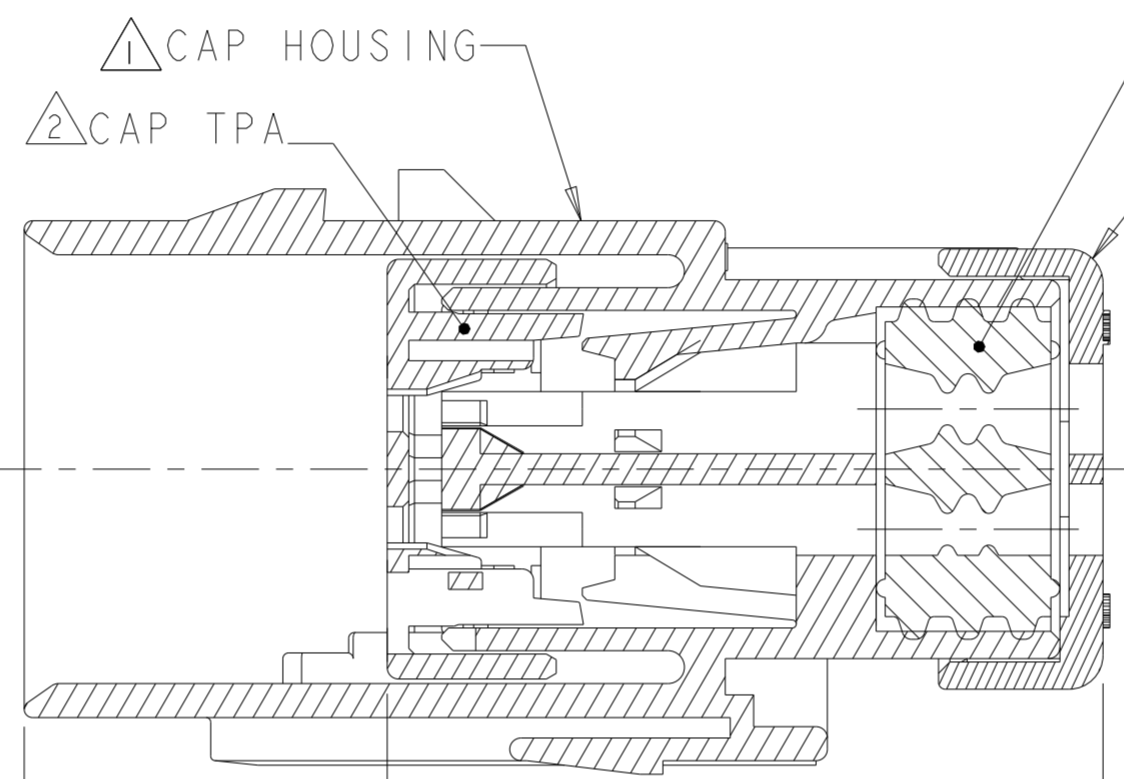


COMPANY LOGO

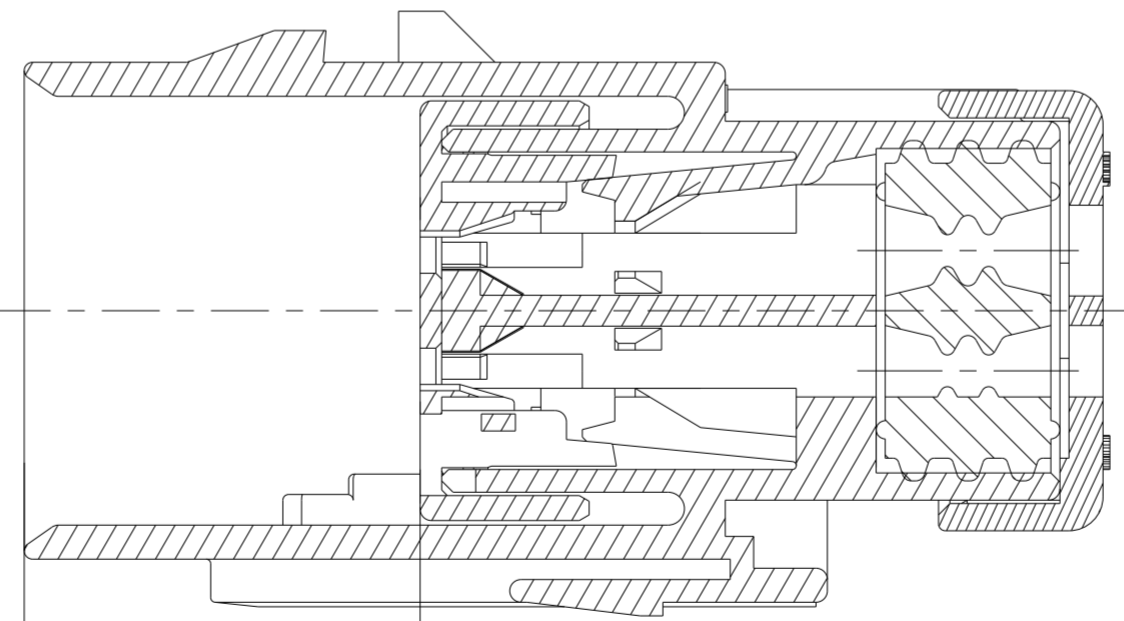
SCALE 1:1



2320918-1 SHOWN
KEY A



SECTION A-A



SECTION A-A

- 1 MATERIAL: 15% FIBERGLASS REINFORCED PBT
COLOR: GRAY
- 2 MATERIAL: 15% FIBERGLASS REINFORCED PBT
COLOR: (SEE TABLE)
- 3 MATERIAL: SILICONE
COLOR: GREEN
- 4. RECOMMENDED WIRE DIAMETER RANGE IS 2.18 TO 3.67mm.
- 5. RECOMMENDED BACKSHELLS:
STRAIGHT EXIT
A. 2292865-1 SMOOTH WIRE EXIT
B. 2292865-2 NC20/NW17 CONDUIT WIRE EXIT
C. 2292865-3 NC16/NW13 CONDUIT WIRE EXIT
90° EXIT
D. 2302486-1 SMOOTH WIRE EXIT
E. 2302486-2 NC20/NW17 CONDUIT WIRE EXIT
F. 2302486-3 NC16/NW13 CONDUIT WIRE EXIT
- 6. RECOMMENDED SEAL PLUG: 776363-1
- 7. MATING CONNECTOR: 2320925-X.

D	ORANGE	2320918-4
C	PURPLE	2320918-3
B	BLUE	2320918-2
A	TAN	2320918-1
KEY	TPA COLOR	PART NUMBER

THIS DRAWING IS A CONTROLLED DOCUMENT.		DWN J MCNEAL 16MAR2018	TE Connectivity		
DIMENSIONS: mm		CHK R BALTER 16MAR2018			
TOLERANCES UNLESS OTHERWISE SPECIFIED:		APVD R BALTER 16MAR2018	NAME CAP ASSEMBLY, 12 POSITION, STD DIA SEAL, HIGH TEMP, AMPSEAL 16		
0 PLC	±	PRODUCT SPEC	108-32602	SIZE	A2
1 PLC	±	APPLICATION SPEC	114-32362	CAGE CODE	-
2 PLC	±0.30	WEIGHT	22.5±1g	DRAWING NO	C-2320918
3 PLC	±	CUSTOMER DRAWING	SCALE	1:1	SHEET
4 PLC	±			OF	REV
ANGLES	±				A
FINISH	-				