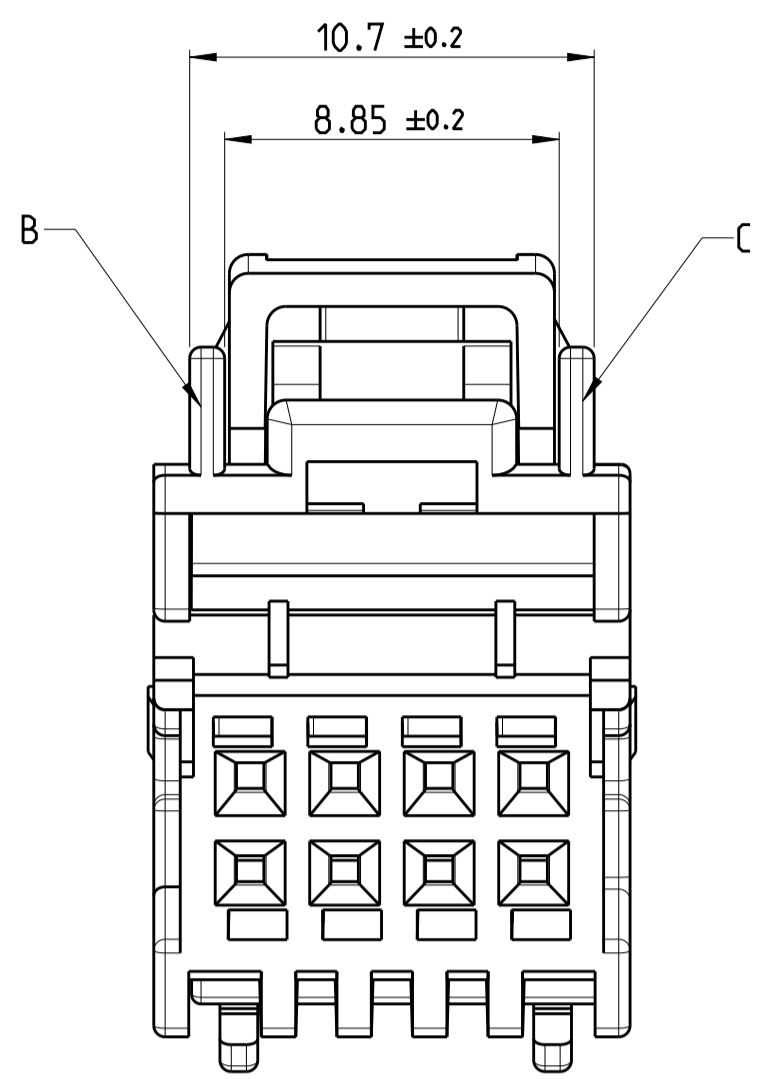
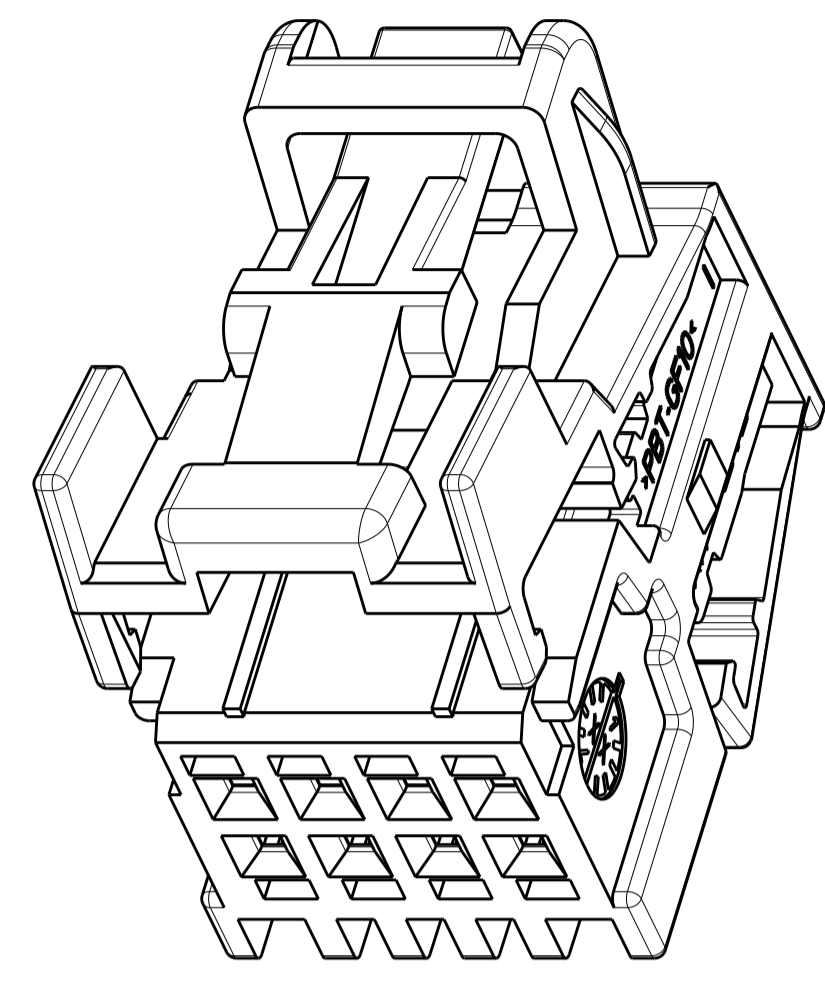
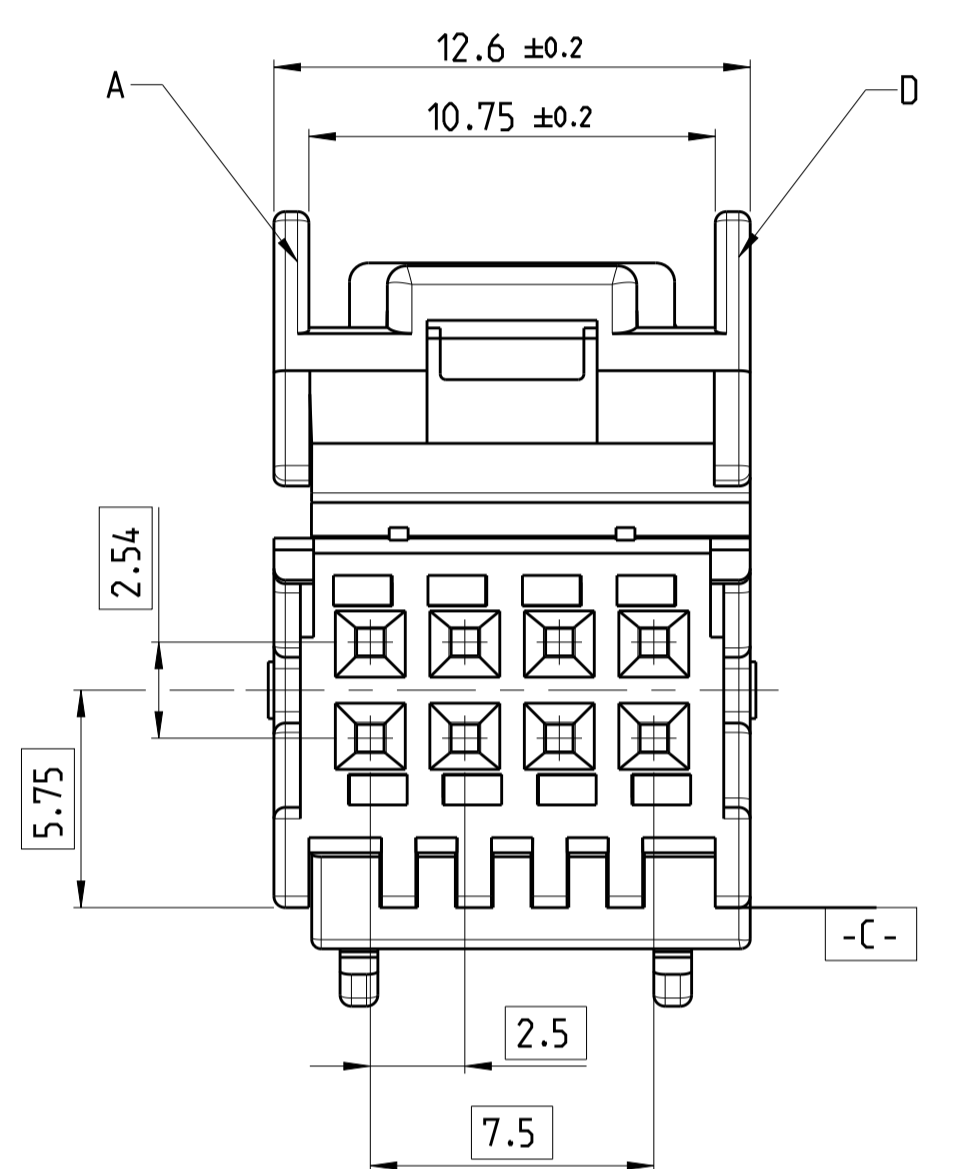


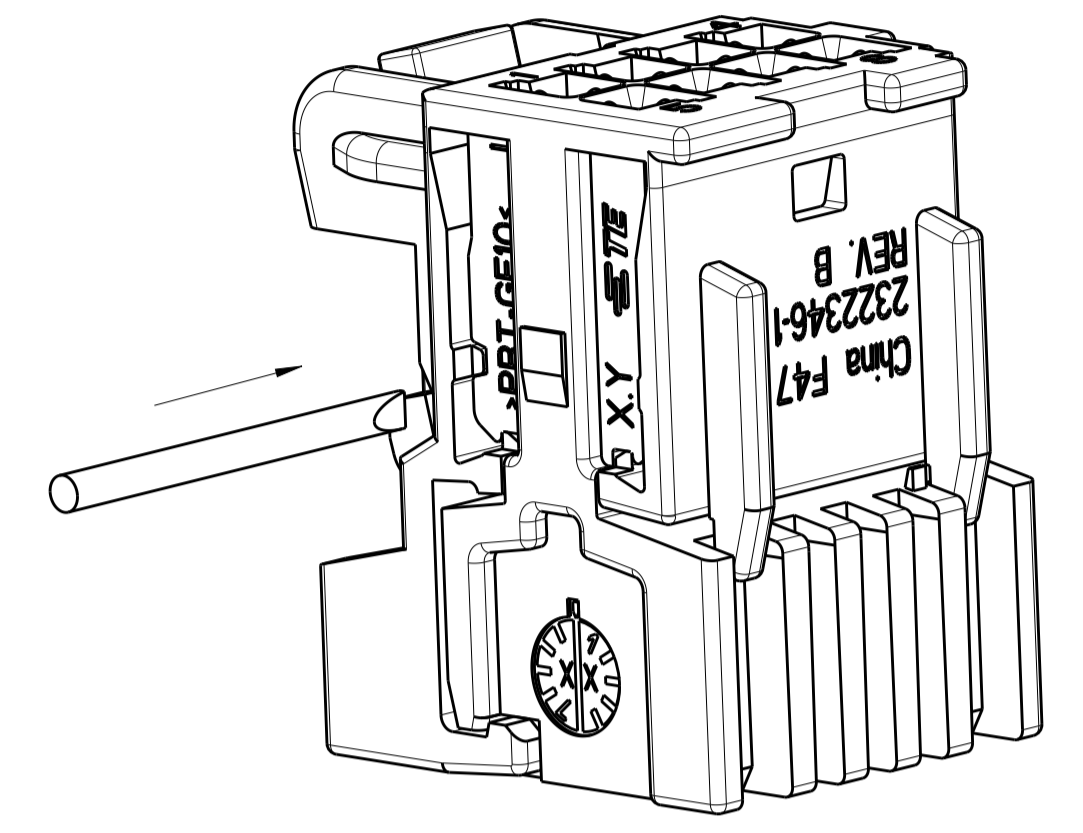
2 CODING B.C  
 2322346-2 AS SHOWN



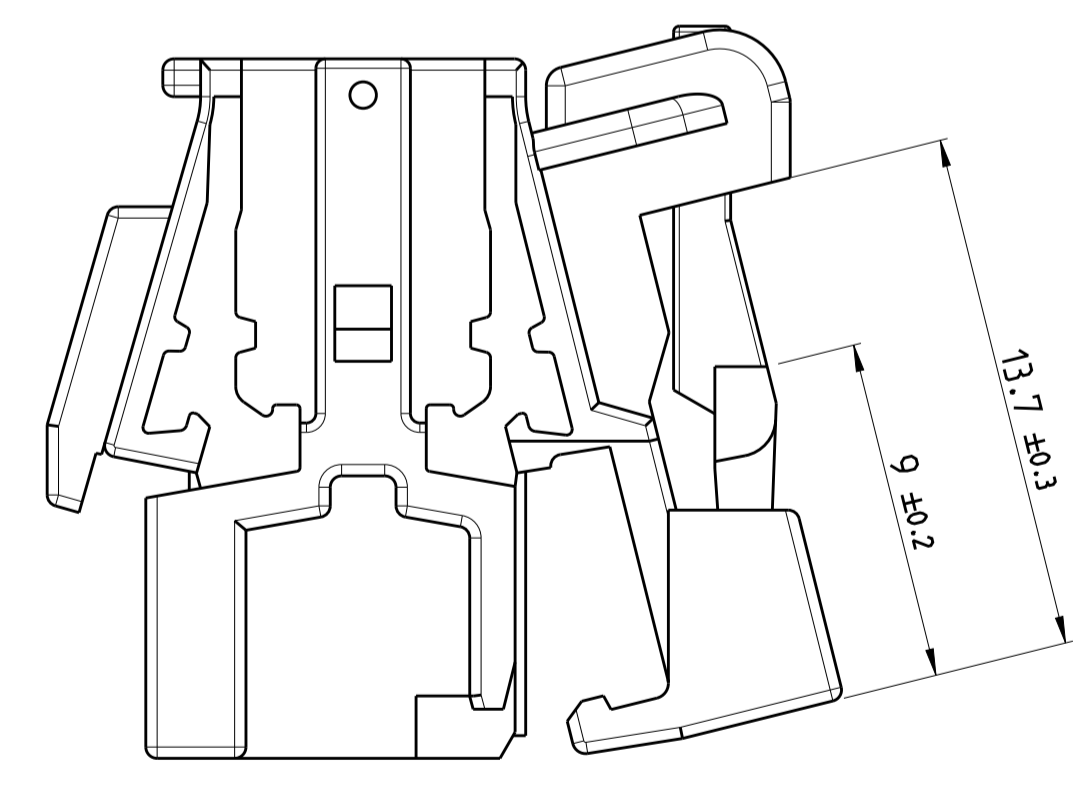
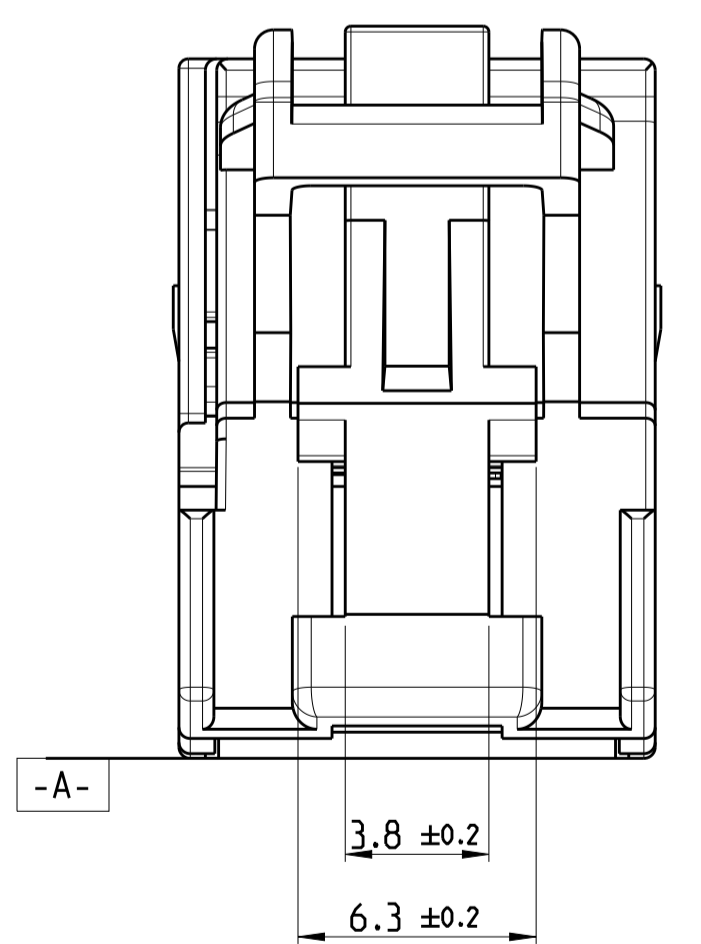
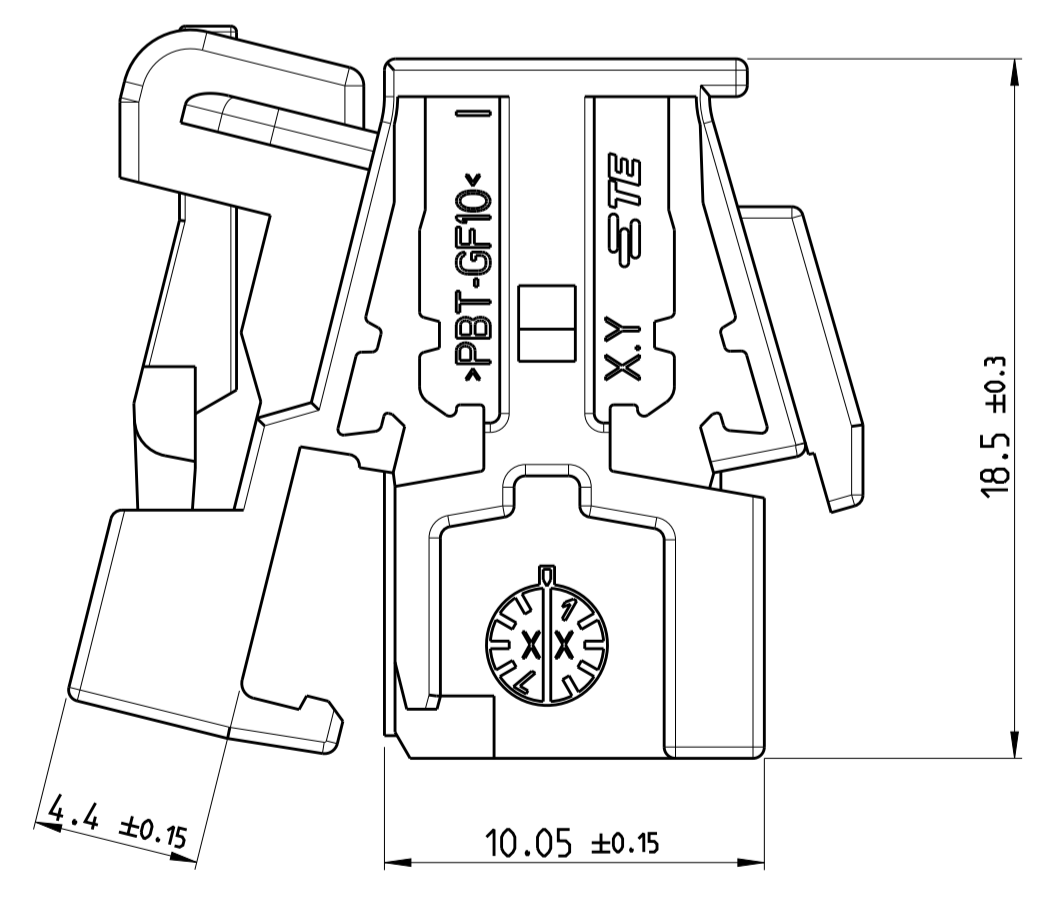
1 CODING A.D  
 2322346-1 AS SHOWN



RETAINER CLOSED PICTURE



⚠ OPEN GUIDE:  
 TO OPEN LOCKED RETAINER, USED A Ø1X0.18MM  
 SCREWDRIER AND PUSH IT IN THE SHOWN OPENING



NOTES

- 1 MATING PART ACCORDING TO TE INTERFACE 114-101074
- 2 SUITABLE CONTACT 1355717, 928999, 963715
- 3 SUITABLE MATING PART 2311621/2320179
- 4 MATERIAL REMOVAL OPTIONAL IN EXECUTION AND POSITION ACCORDING TO MANUFACTURER POSSIBLE
- 5 PACKAGE: LOOSE PIECE IN CARTON BOX

⚠ CONDITION ON DELIVERY:  
 SECONDARY LOCK DEVICE SHOULD BE IN PRELOCK POSITION  
 --IF IN ENDOCK POSITION AFTER TRANSPORTATION,  
 PLEASE REOPEN IT IN ACCORDANCE THE OPENING GUIDE

TE-PART NO	REV	COD.	MATERIAL	COLOUR	RAL	VOLUME [cm <sup>3</sup> ]	WEIGHT [g]	POS.
2322346-4	B	B.D	PBT-GF10	BLUE	5012	1.52	2.08	4
2322346-3	B	A.C	PBT-GF10	GREEN	6018	1.52	2.08	3
2322346-2	B	B.C	PBT-GF10	BROWN	1011	1.52	2.08	2
2322346-1	B	A.D	PBT-GF10	BLACK	9011	1.52	2.08	1

THIS DRAWING IS A CONTROLLED DOCUMENT. DWG: T.DONG 10AUG2017  
 CHK: S.W.ANG 10AUG2017  
 APVD: L.Y.LIN 10AUG2017

TE Connectivity

NAME: 8POS.. MQS REC.. HSG

PRODUCT SPEC: 108-101528  
 APPLICATION SPEC: -

SIZE: A1 CAGE CODE: 00779 DRAWING NO: 2322346  
 WEIGHT: - RESTRICTED TO: -  
 CUSTOMER DRAWING SCALE: 4:1 SHEET: 1 OF 1 REV: B

DIMENSIONS:	TOLERANCES UNLESS OTHERWISE SPECIFIED
mm	0 PLC ±
	1 PLC ±
	2 PLC ±
	3 PLC ±
	4 PLC ±
	5 PLC ±
	6 PLC ±
	ANGLES
	FINISH
MATERIAL: SEE TABLE	FINISH: SEE TABLE