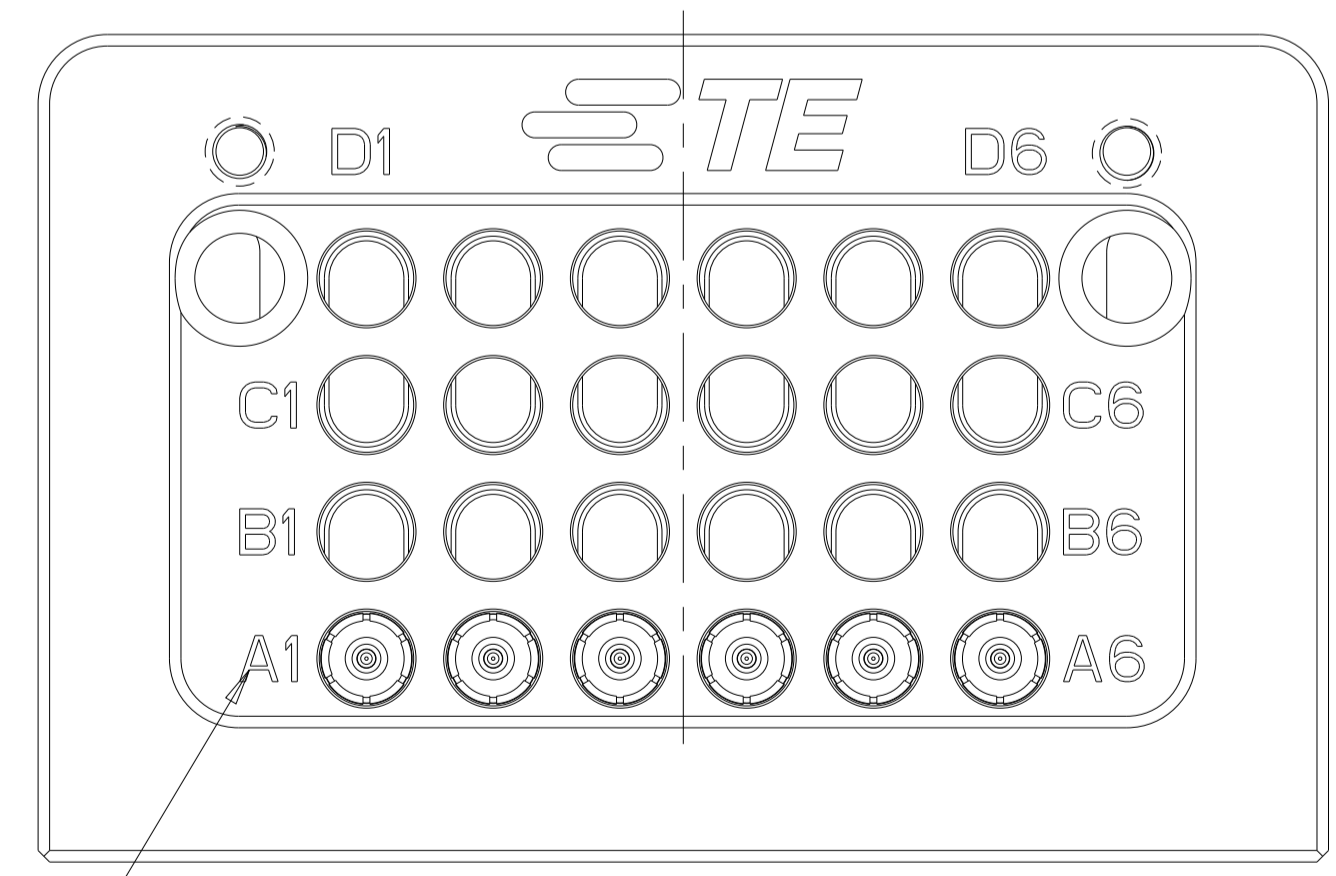
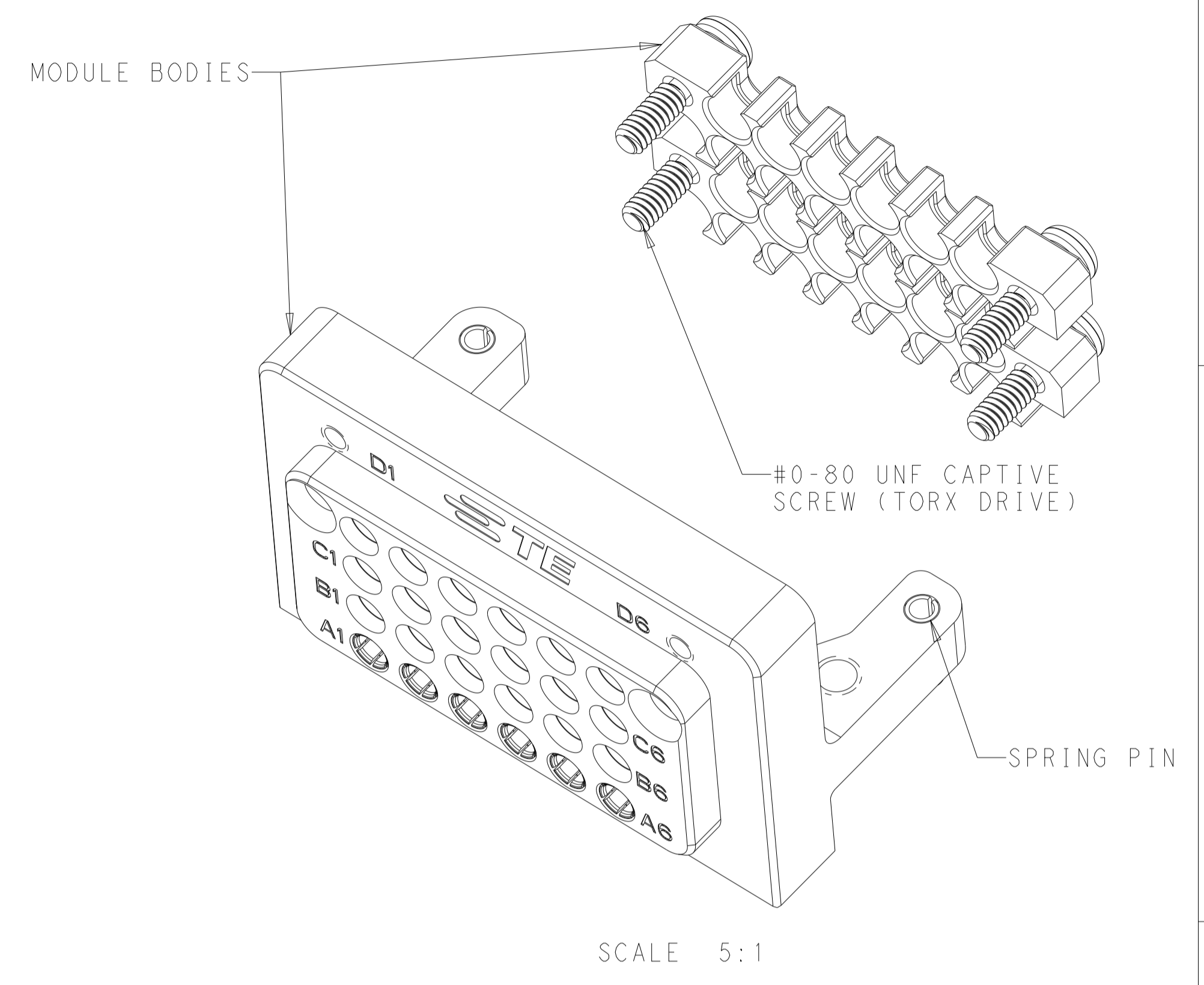
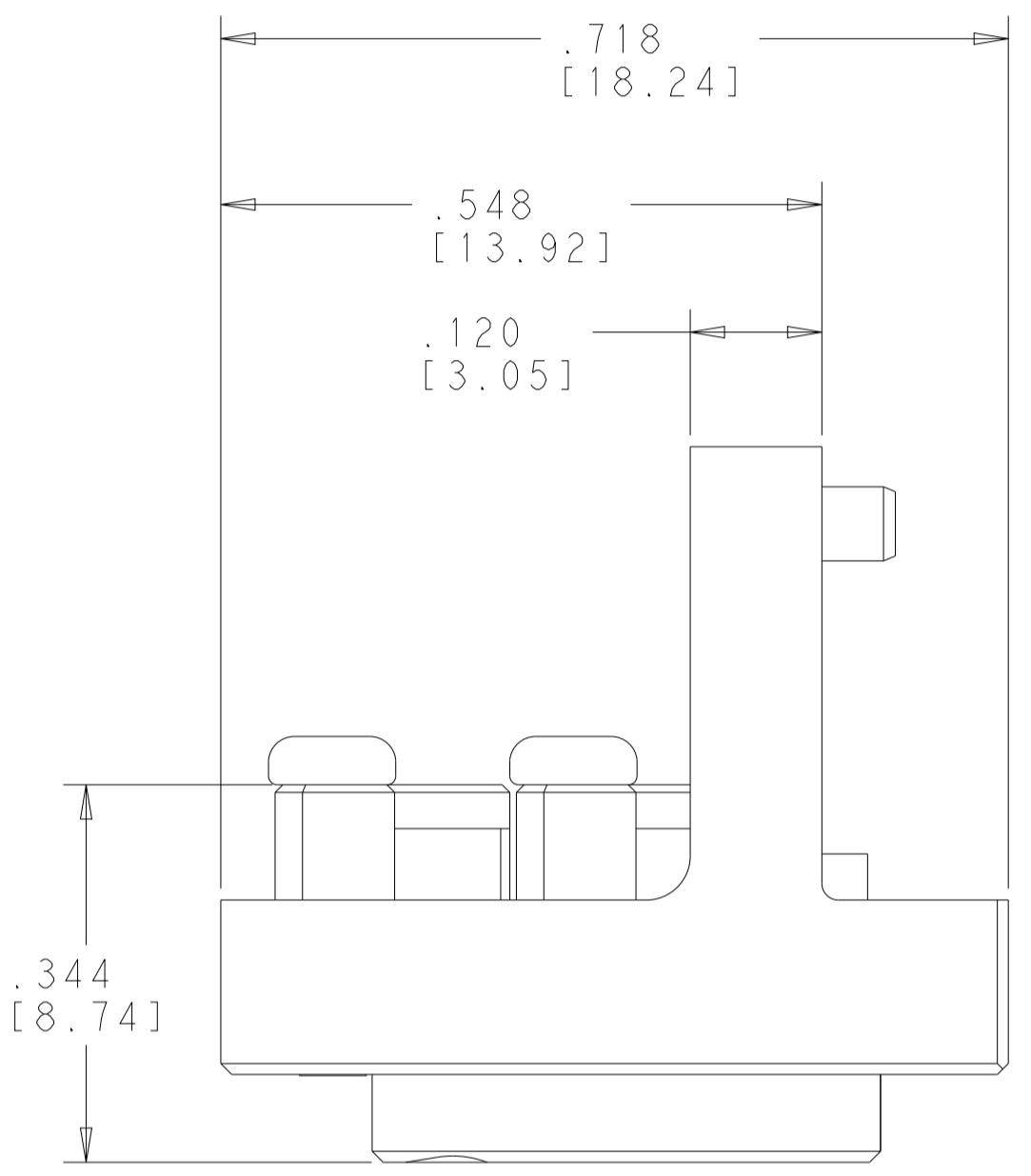
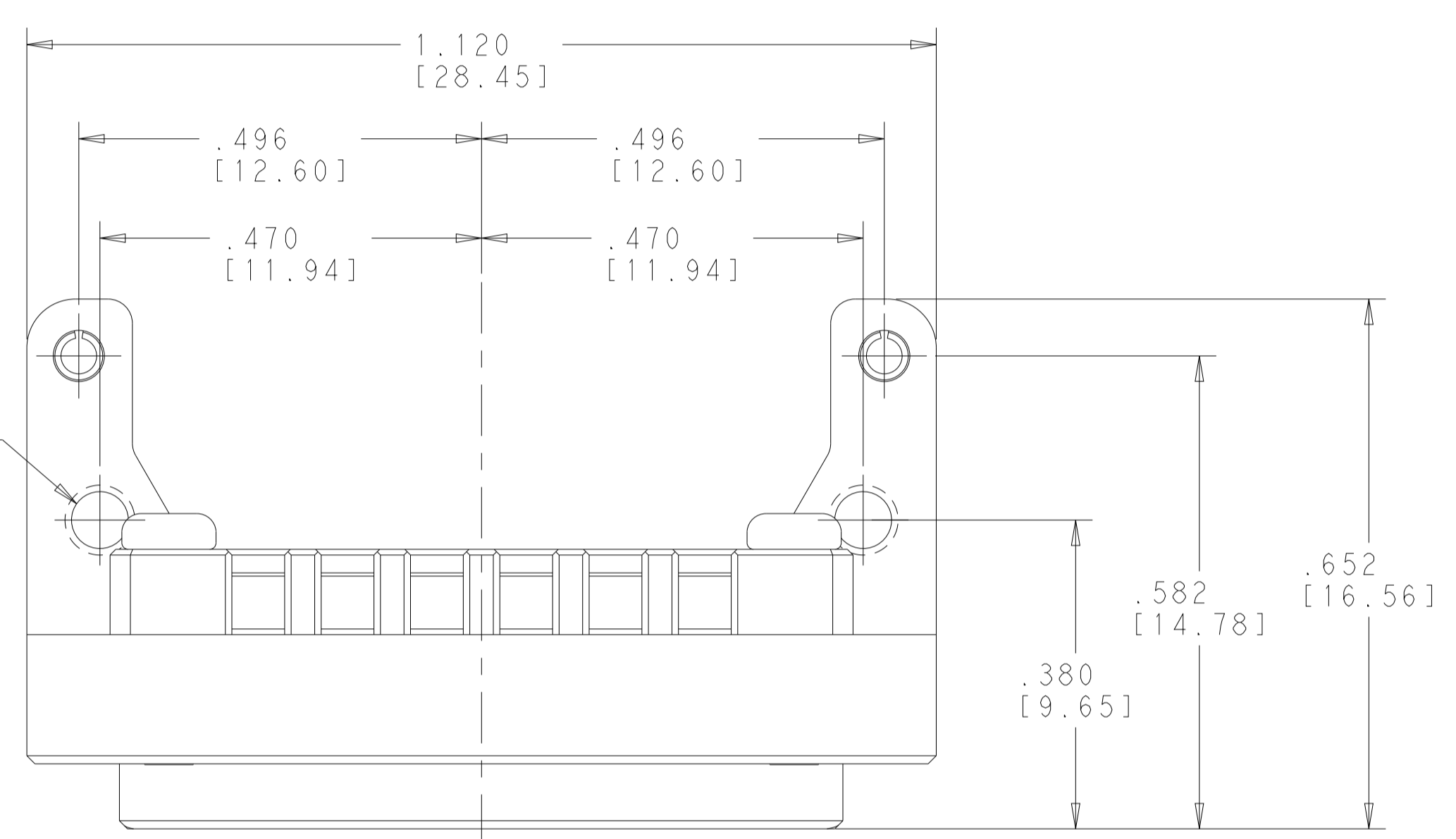
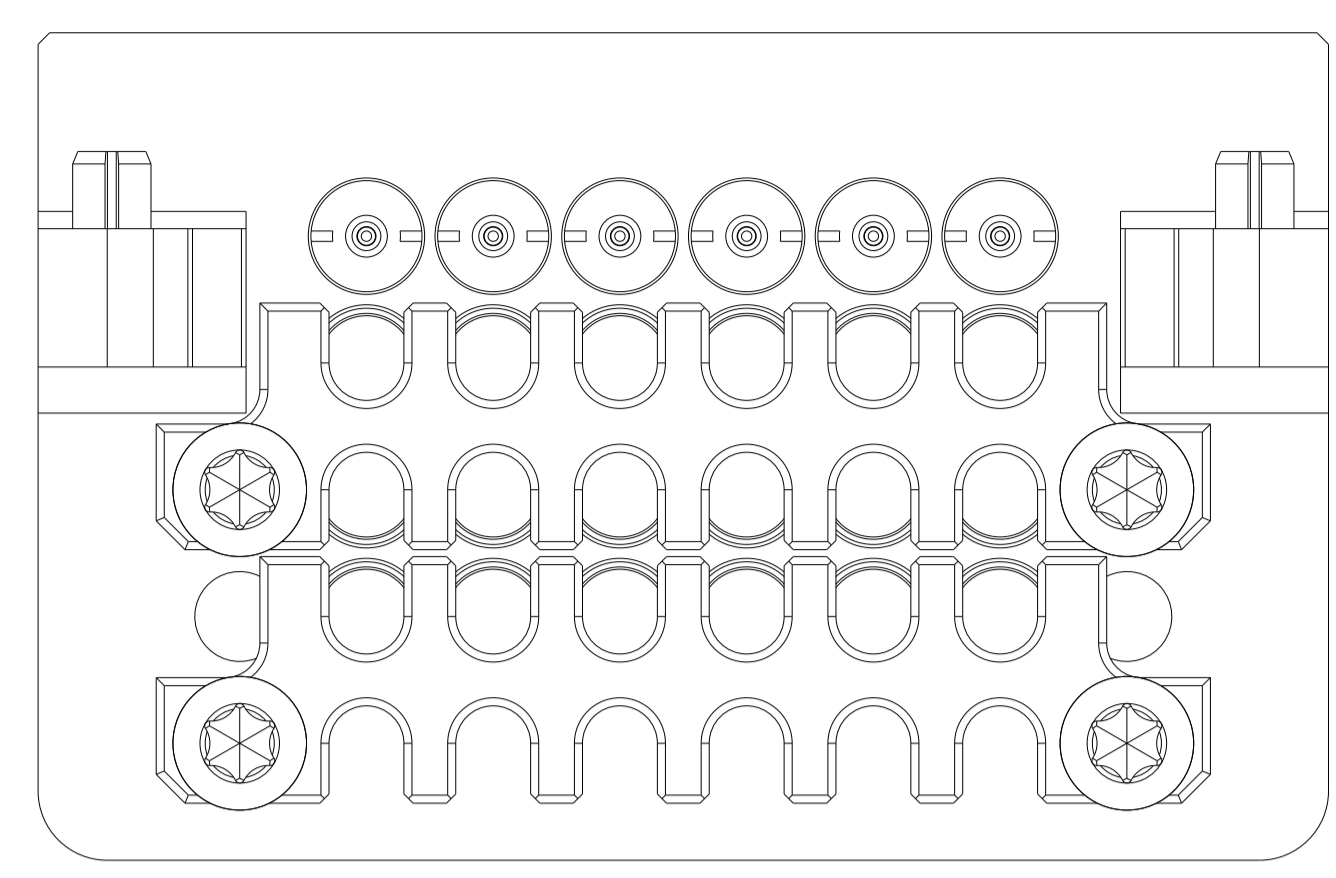


LOC		DIST		REVISIONS			
P	LTN	DESCRIPTION	DATE	DWN	APVD		
A		INITIAL RELEASE	22AUG2021	KM	FB		



- 1 MATERIAL:
 MODULE BODIES - SEE TABLE
 SCREWS AND SPRING PINS - STAINLESS STEEL
 CONTACT BODIES AND PIN: COPPER ALLOY
 INSULATOR: TEFLON (PTFE)
- 2 FINISH:
 MODULE BODIES - SEE TABLE
 SCREWS AND SPRING PINS - PASSIVATED
 FRONT CONTACT BODY AND PIN: 50-90 μIN GOLD PLATE OVER NICKEL
 REAR CONTACT BODY: 3-15 μIN GOLD PLATE OVER NICKEL
- 3. SHIPPED WITH EDGE LAUNCH CONTACTS ASSEMBLED IN POSITIONS A1-A6. BACKPLATES WITH SCREWS PROVIDED UNASSEMBLED TO MODULE BODY.
- 4 CIRCUIT IDENTIFICATION MARKING

CLEAR CHROMATE CONVERSION COATING	ALUMINUM ALLOY 7075	2332737-2
PASSIVATED	STAINLESS STEEL PER UNS S30300	2332737-1
MODULE FINISH 2	MODULE MATERIAL 1	PART NUMBER

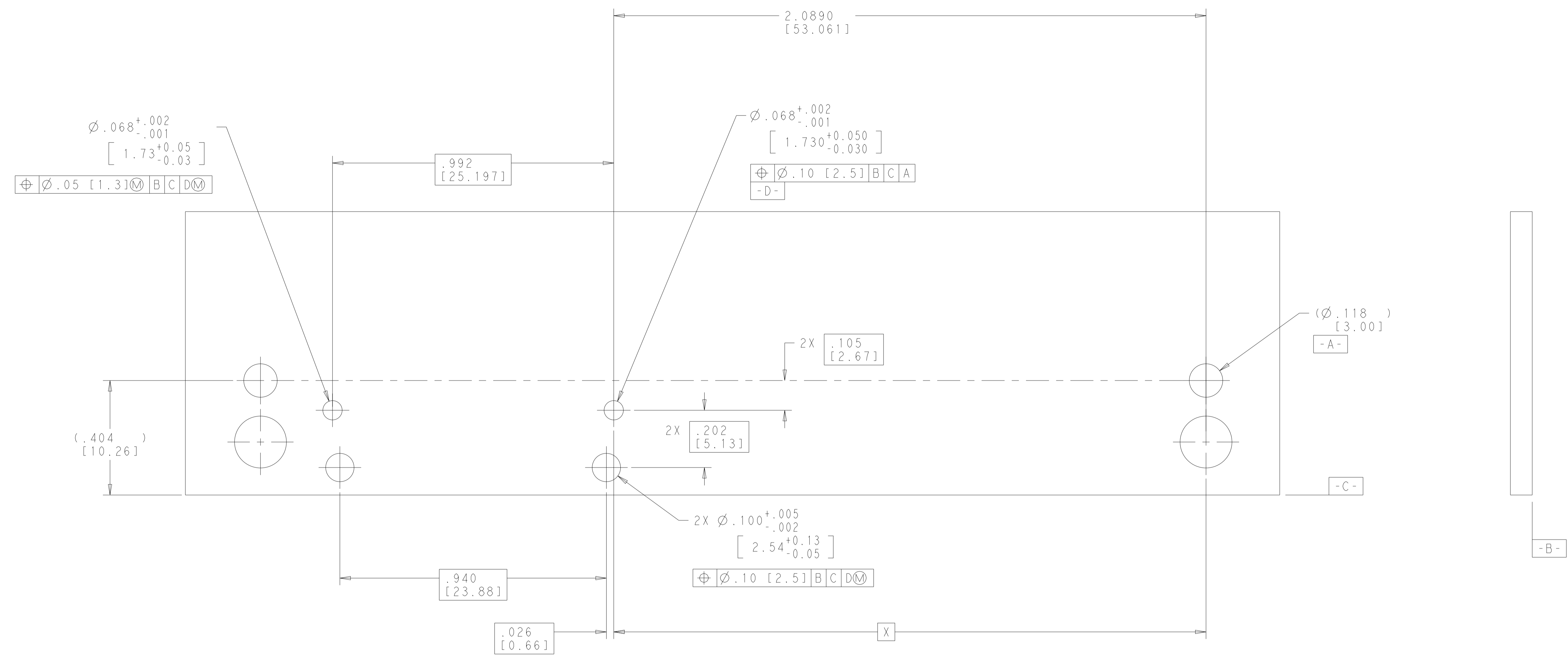
THIS DRAWING IS A CONTROLLED DOCUMENT. DWN: K. MILLER 20JUN2018
 CHK: F. BLASICK 23JUL2018

TE Connectivity

ASSEMBLY, RF MODULE, DAUGHTERCARD DIRECT EDGELAUNCH, V67.3

Customer Drawing SCALE 6:1 SHEET 1 OF 2 REV A

LOC		DIST		REVISIONS			
P	LTN	DESCRIPTION	DATE	DWN	APVD		
-	-	SEE SHEET 1	-	-	-		



RECOMMENDED PCB CUTOUT
 DESIGNED TO MATE WITH MODULE "C"
 LOCATIONS AS SPECIFIED IN VITA 67.3
 (SEE FIGURE 6.1.4.1-1)

P2	2.089[53.06]
P3	3.646[92.61]
P4	4.980[126.49]
P5	6.113[155.27]
P6	7.261[184.43]
POSITION	DIM "X"

THIS DRAWING IS A CONTROLLED DOCUMENT.

DWN: K. MILLER 20JUN2018
 CHK: D. WILSON 10JUL2018

TE Connectivity

ASSEMBLY, RF MODULE, DAUGHTERCARD
 DIRECT EDGELAUNCH, V67.3

SIZE: A1 CAGE CODE: 2332737 DRAWING NO: 100779 ©=2332737

SCALE: 4:1 SHEET: 2 OF 2 REV: A

Customer Drawing