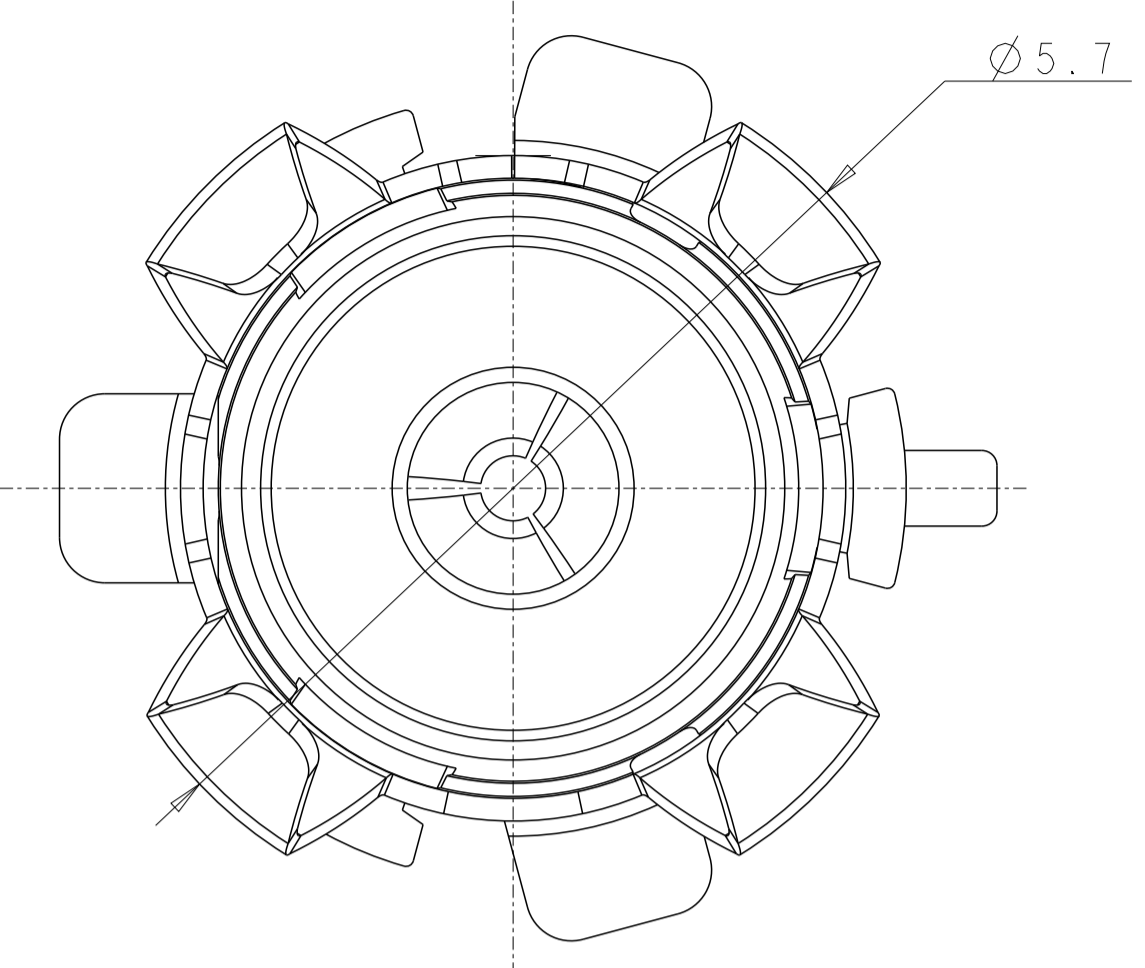
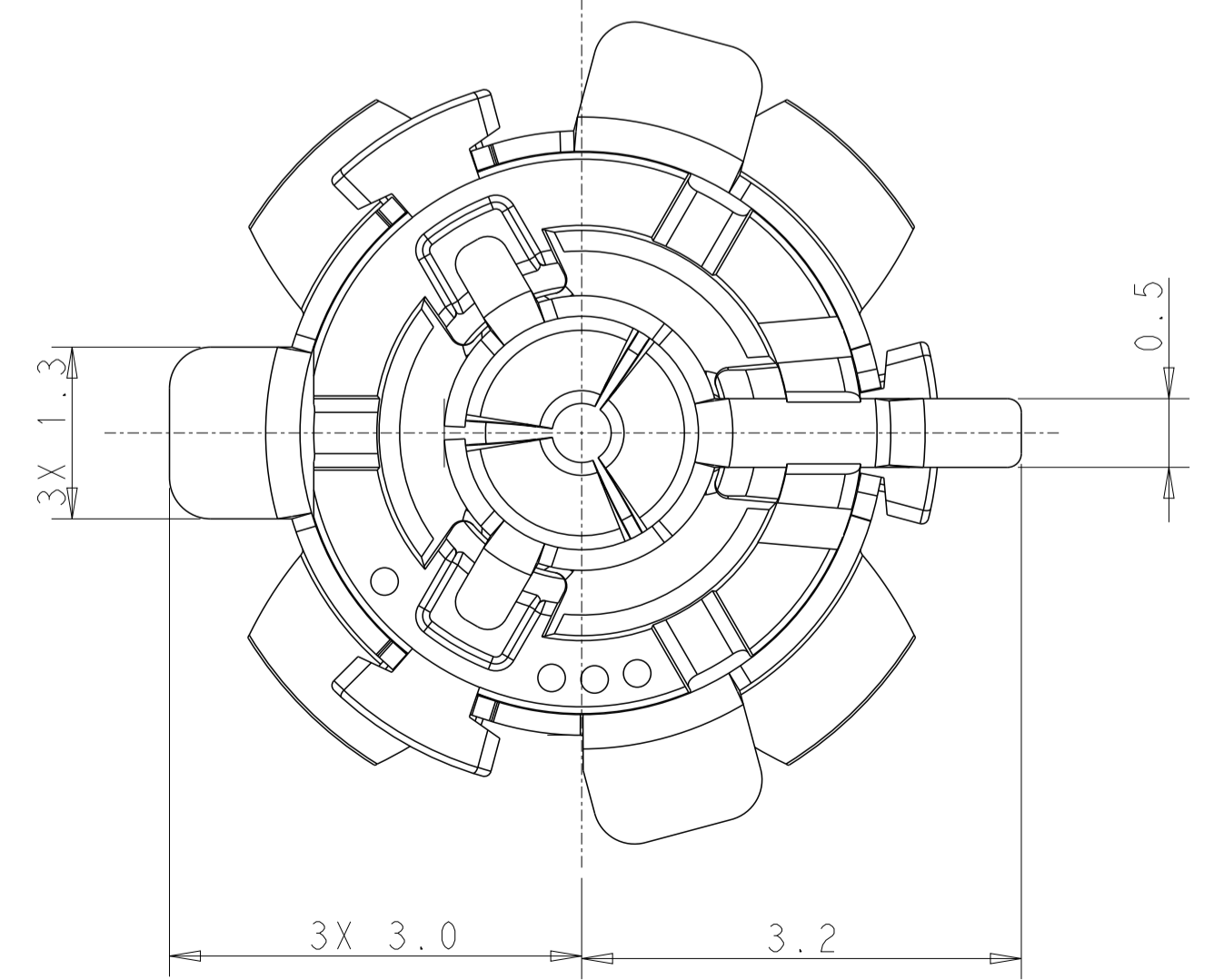
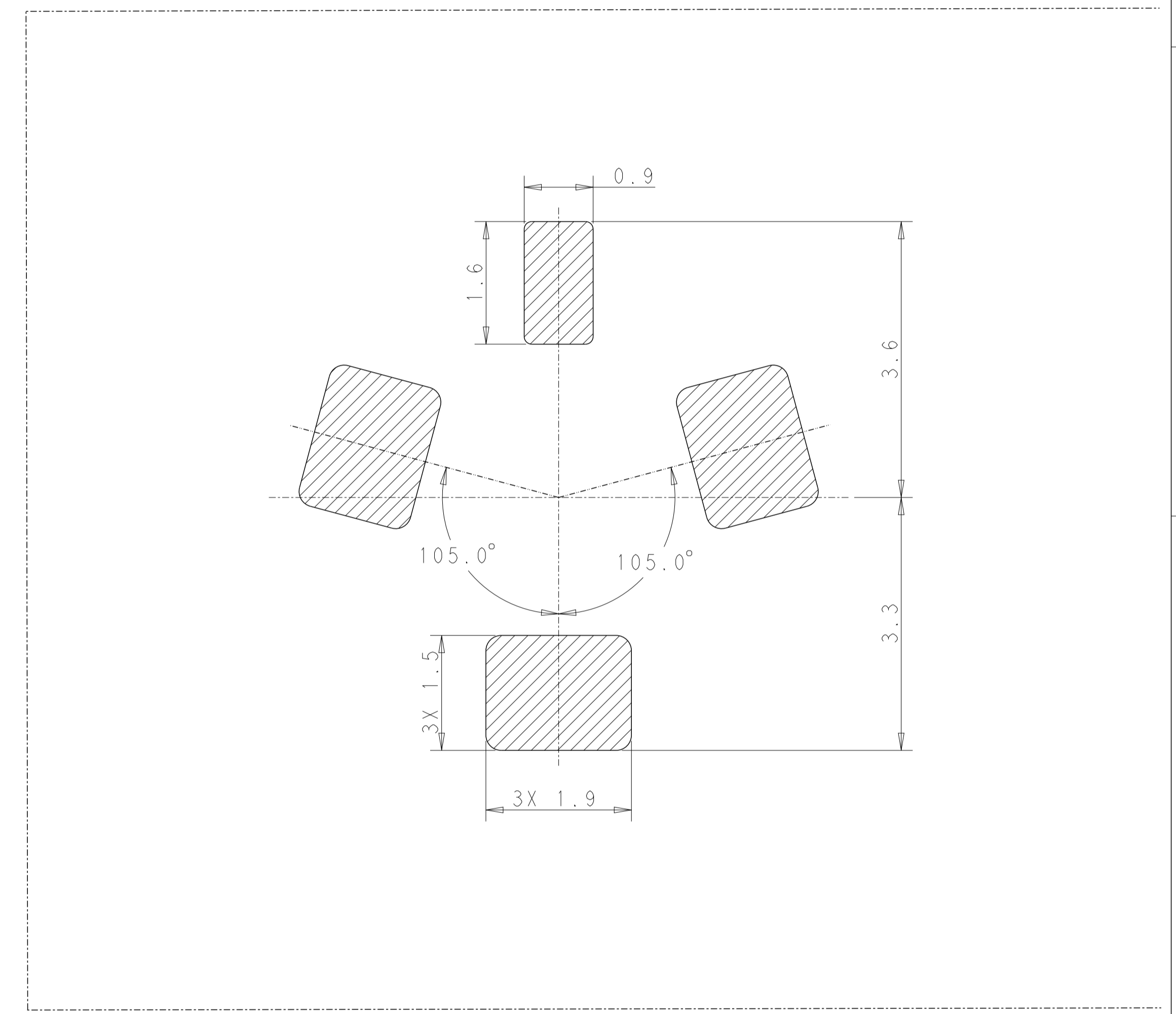
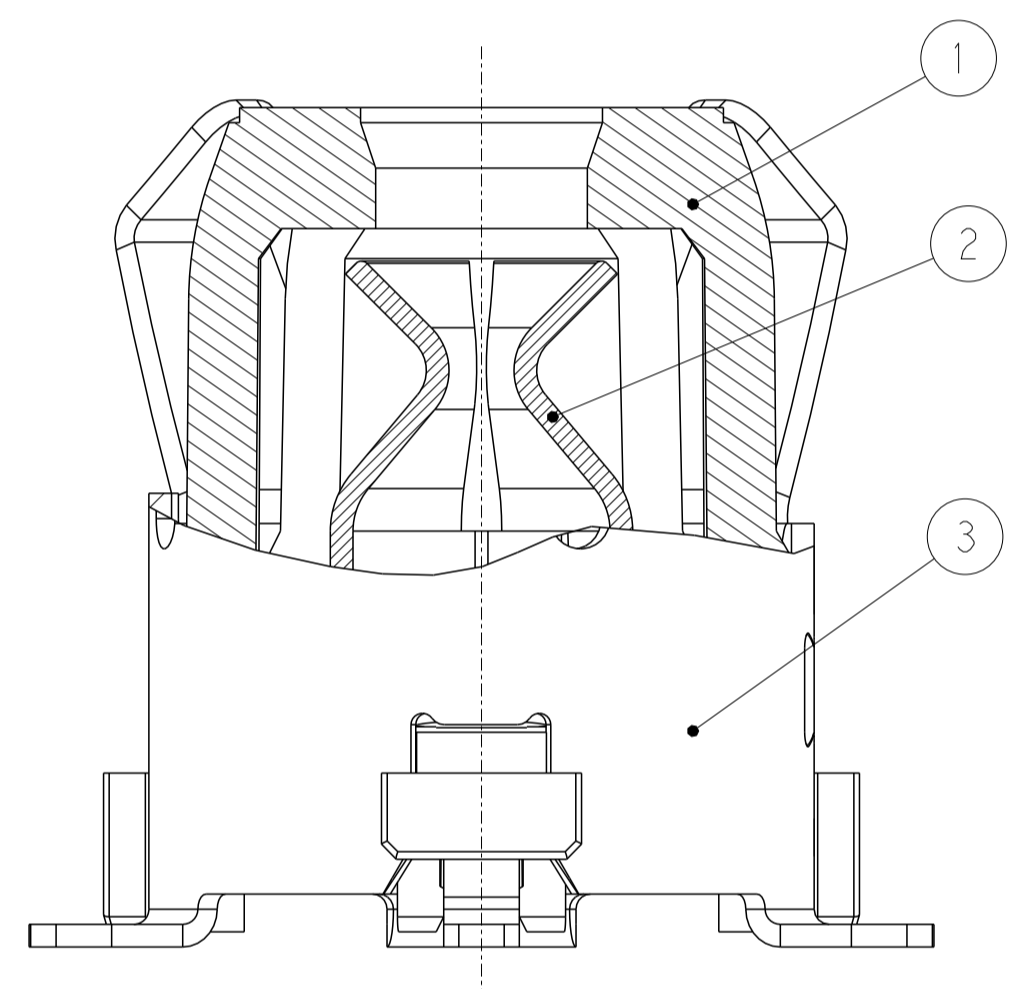
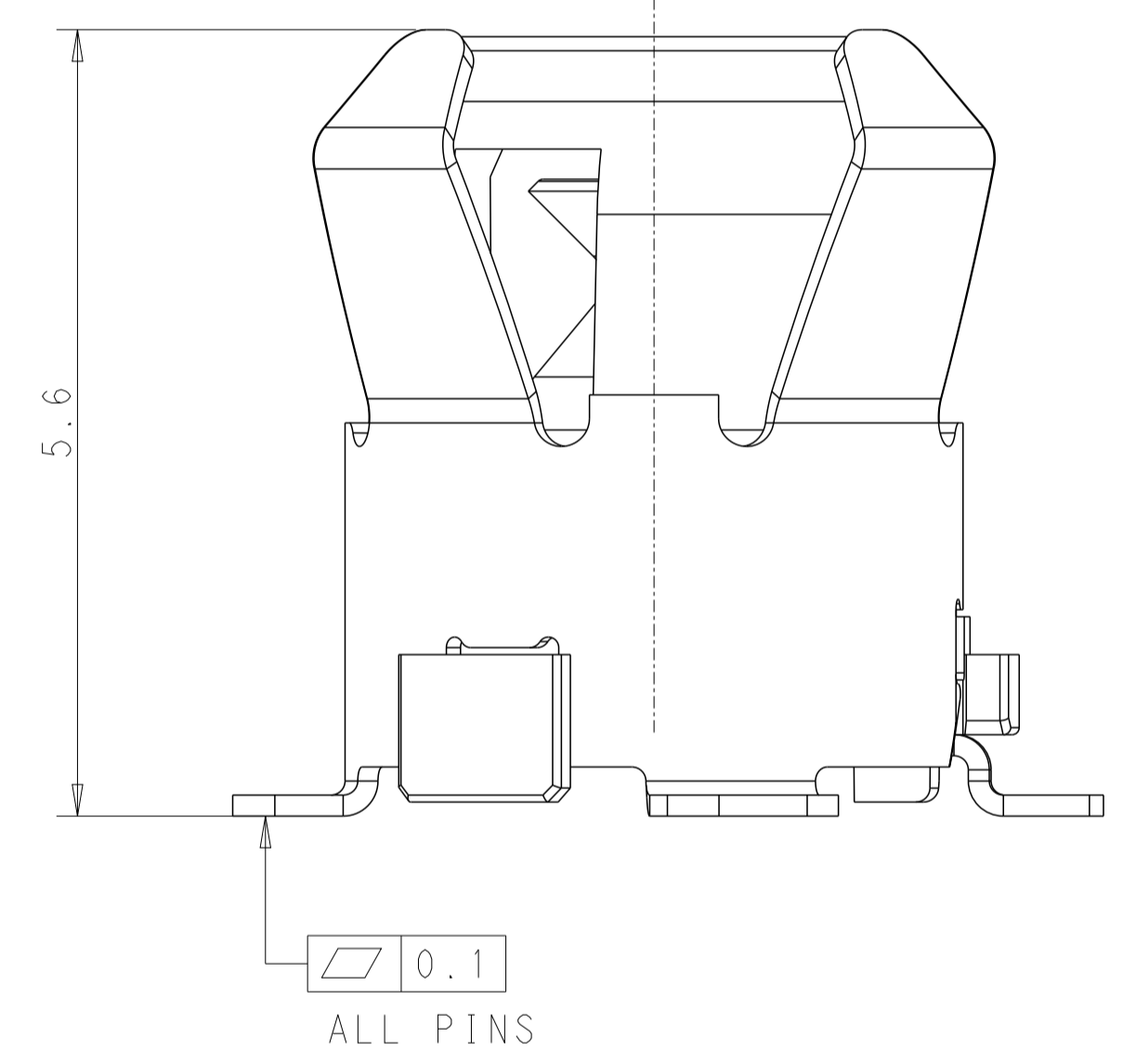


REVISIONS				
P.	LTN	DESCRIPTION	DATE	OWN APVD
A2		REVISED ECR-22-132016	10MAR22	L.L F.P
A3		REVISED ECR-22-138897	12MAY22	L.L F.P
A4		REVISED ECR-22-159306	23NOV22	L.L F.P
A5		REVISED ECR-24-211396	11JUN24	L.L F.P



1. MATERIAL: SEE TABLE
2. PACKAGING: TAPE AND REEL
3. RECOMMENDED PCB THICKNESS: 1.20mm MIN
- A5 4. ADD NEW DASH NUMBER PART 2338810-3



ASS. P/N	DESCRIPTION	NO.	MATERIAL	FINISH	QTY.
A5 2338810-3	OUTER CONTACT	3	COPPER ALLOY	TIN OVER NICKEL	1
	INNER CONTACT	2	COPPER ALLOY	GOLD & TIN OVER NICKEL	1
	DIELECTRIC	1	PA	/	1
2338810-2	OUTER CONTACT	3	COPPER ALLOY	TIN OVER NICKEL	1
	INNER CONTACT	2	COPPER ALLOY	TIN OVER NICKEL	1
	DIELECTRIC	1	PA	/	1
2338810-1	OUTER CONTACT	3	COPPER ALLOY	TIN OVER NICKEL	1
	INNER CONTACT	2	COPPER ALLOY	GOLD & TIN OVER NICKEL	1
	DIELECTRIC	1	PA	/	1

THIS DRAWING IS A CONTROLLED DOCUMENT.

DIMENSIONS: mm
 TOLERANCES UNLESS OTHERWISE SPECIFIED:
 0 PLC ±0.2
 1 PLC ±0.2
 2 PLC ±0.2
 3 PLC ±0.2
 4 PLC ±0.2
 ANGLES ±5°
 FINISH

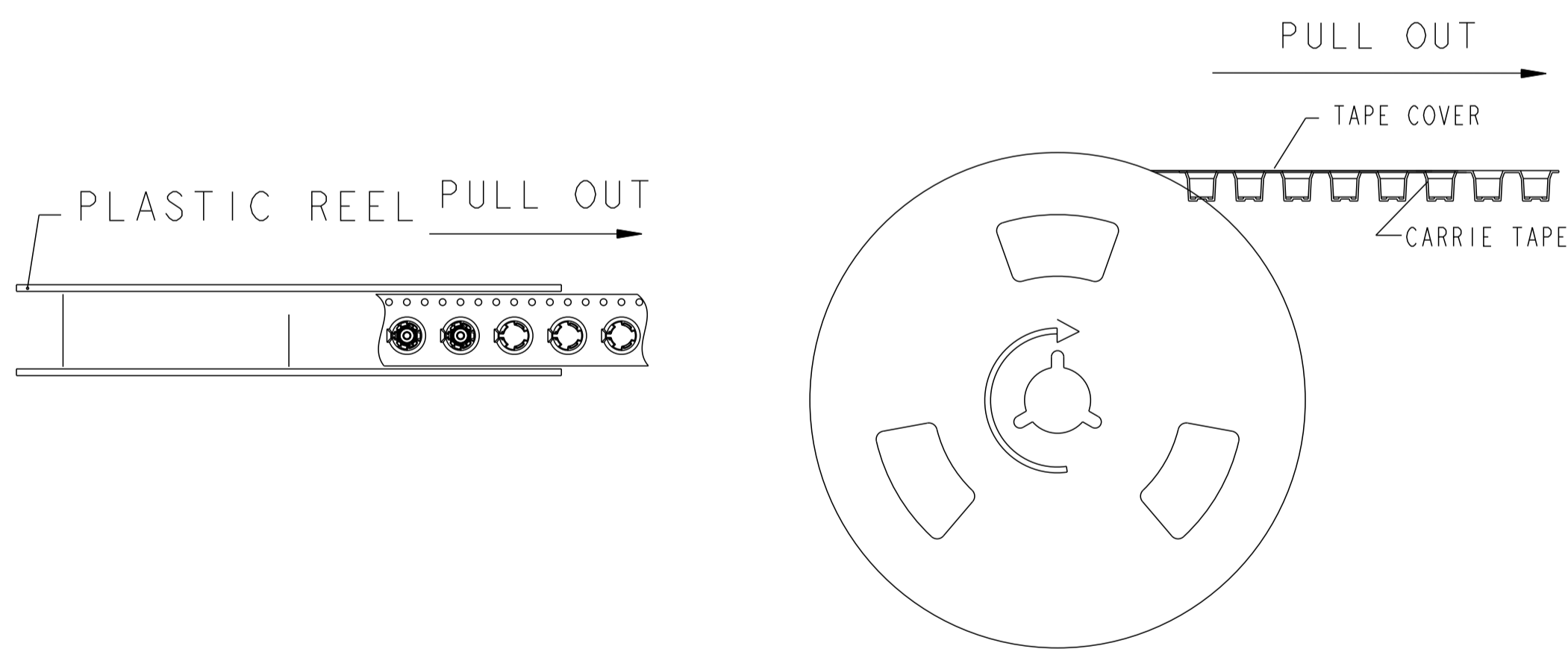
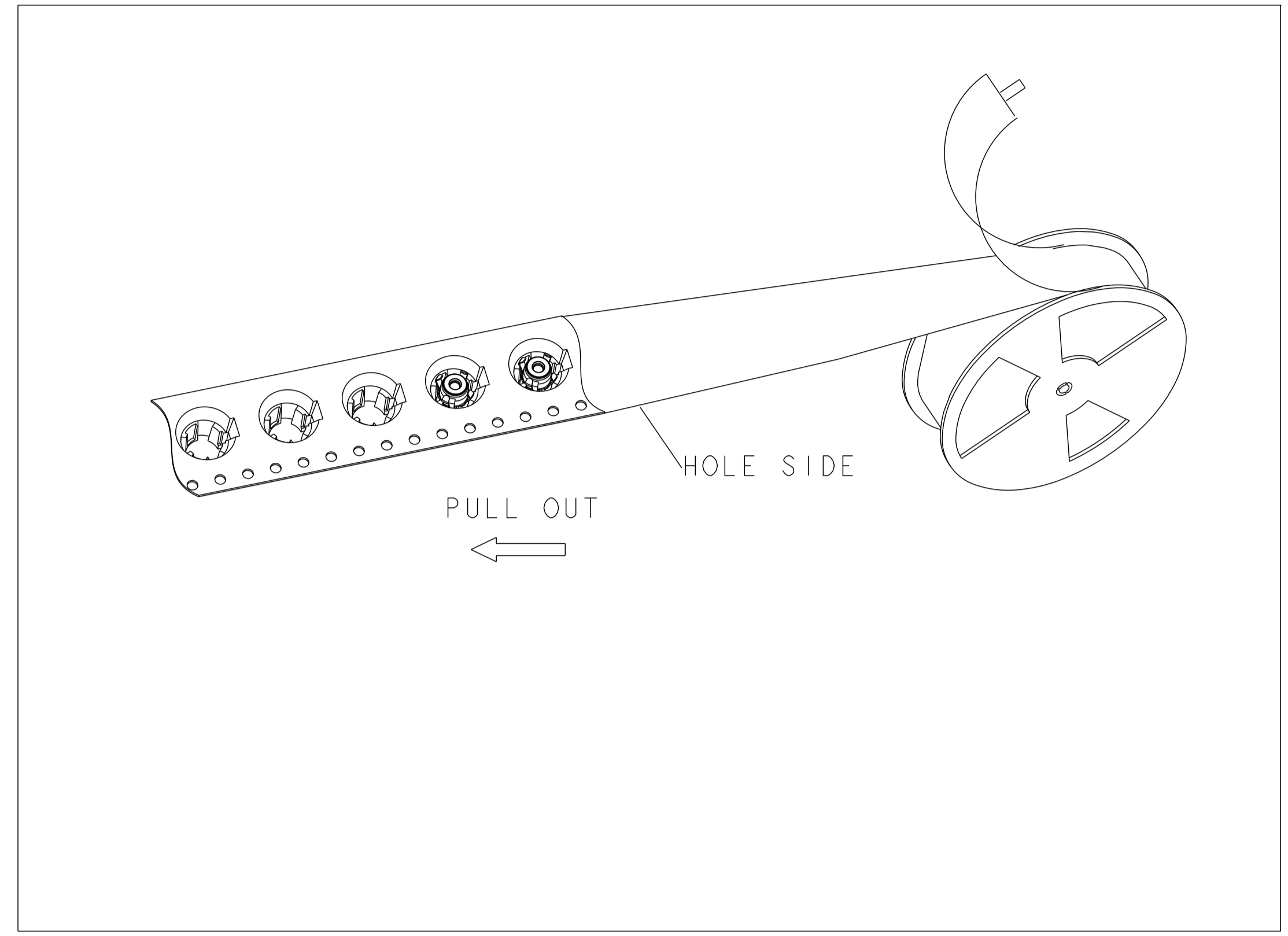
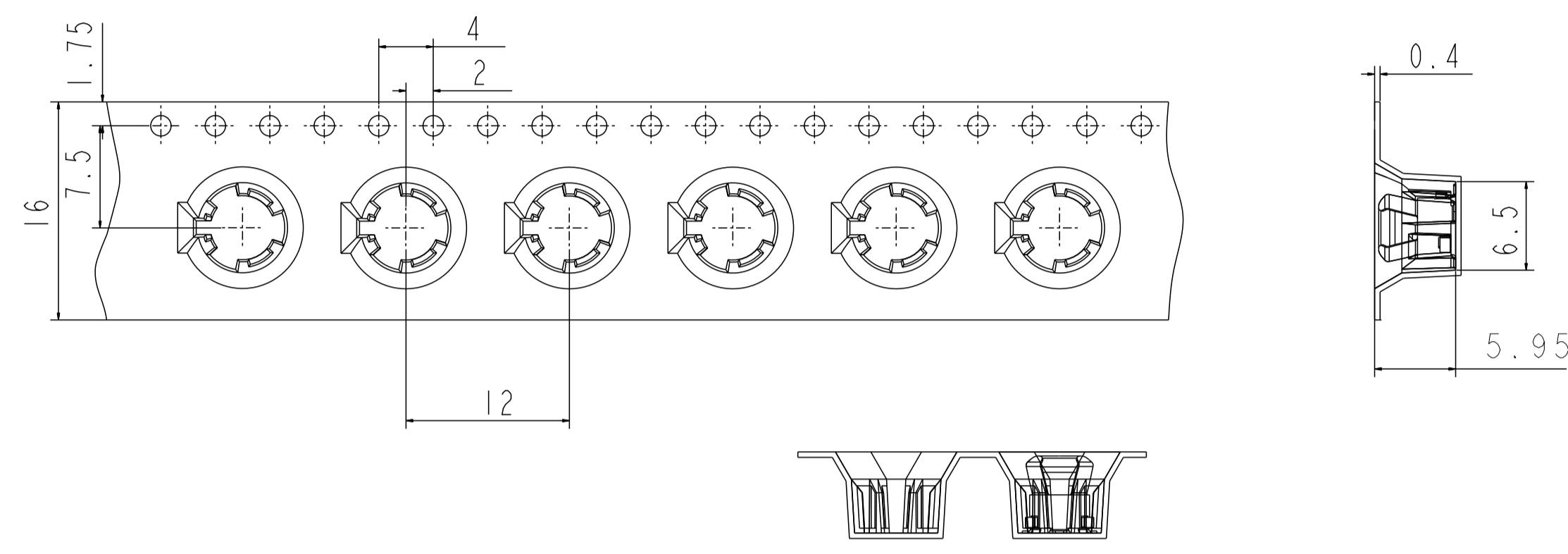
DWN: L.LIU 31MAY2021
 CHK: F.PAN 31MAY2021
 APVD: J.YIN 31MAY2021

NAME: HD CAMERA FLOATING SOCKET ASSEMBLY
 PRODUCT SPEC: 108-160244
 APPLICATION SPEC:

MATERIAL: CUSTOMER DRAWING
 WEIGHT: 0.13 g
 SIZE: A1 | 00779 | C=2338810
 SCALE: 20:1 SHEET 1 OF 2 REV A5

TE TE Connectivity

REVISIONS				
P	LTN	DESCRIPTION	DATE	APVD
-	SEE SHEET 1			
-				
-				



THIS DRAWING IS A CONTROLLED DOCUMENT.		DWN: L.LIU 31MAY2021	
DIMENSIONS: mm		CHK: F.PAN 31MAY2021	
TOLERANCES UNLESS OTHERWISE SPECIFIED: 0 PLC ±.2 1 PLC ±0.2 2 PLC ±0.2 3 PLC ±0.2 4 PLC ±.2 ANGLES ±.5°		APVD: J.YIN 31MAY2021	NAME: HD CAMERA FLOATING SOCKET ASSEMBLY
MATERIAL: -		PRODUCT SPEC: 108-160244	SIZE: A
FINISH: -		APPLICATION SPEC: -	CAGE CODE: 00779
		WEIGHT: 0.13 g	DRAWING NO: C=2338810
		CUSTOMER DRAWING	RESTRICTED TO: -
		SCALE: 20:1	SHEET 2 OF 2
			REV: A5