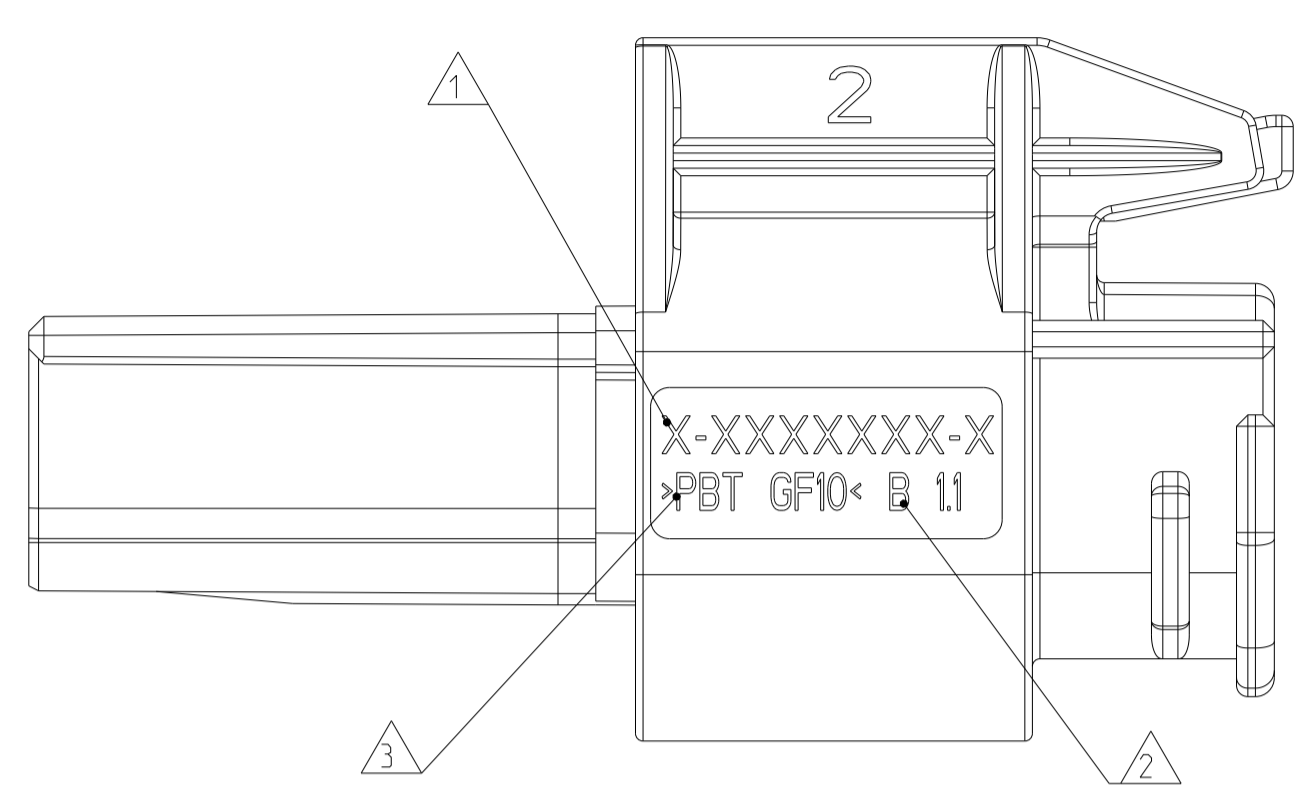
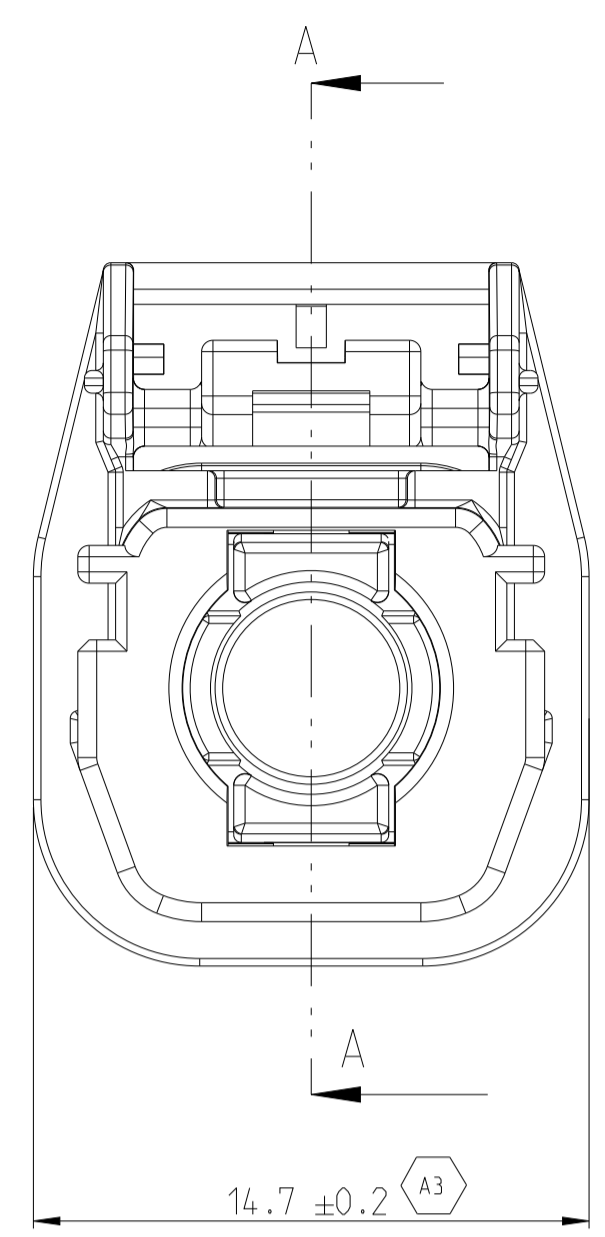
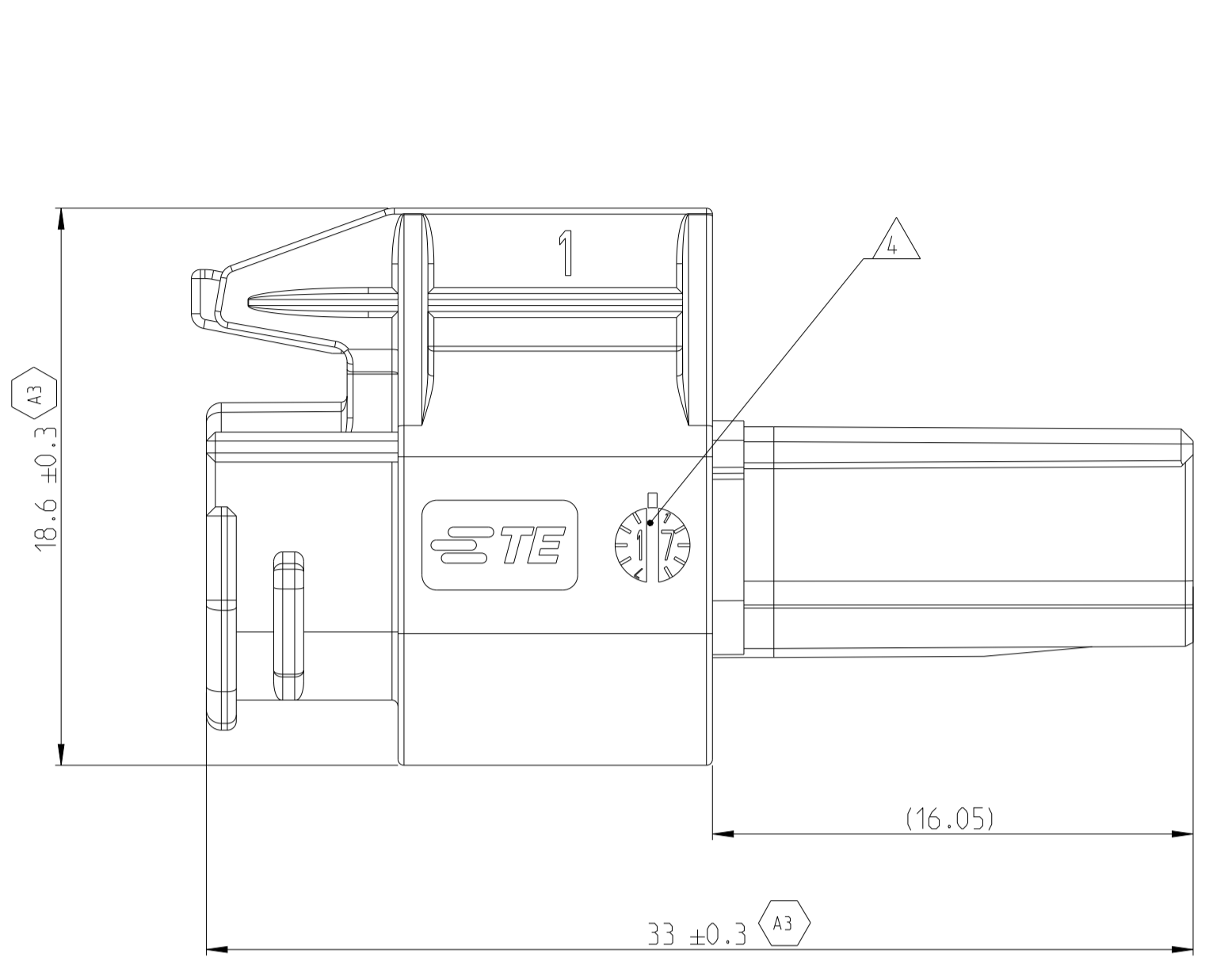
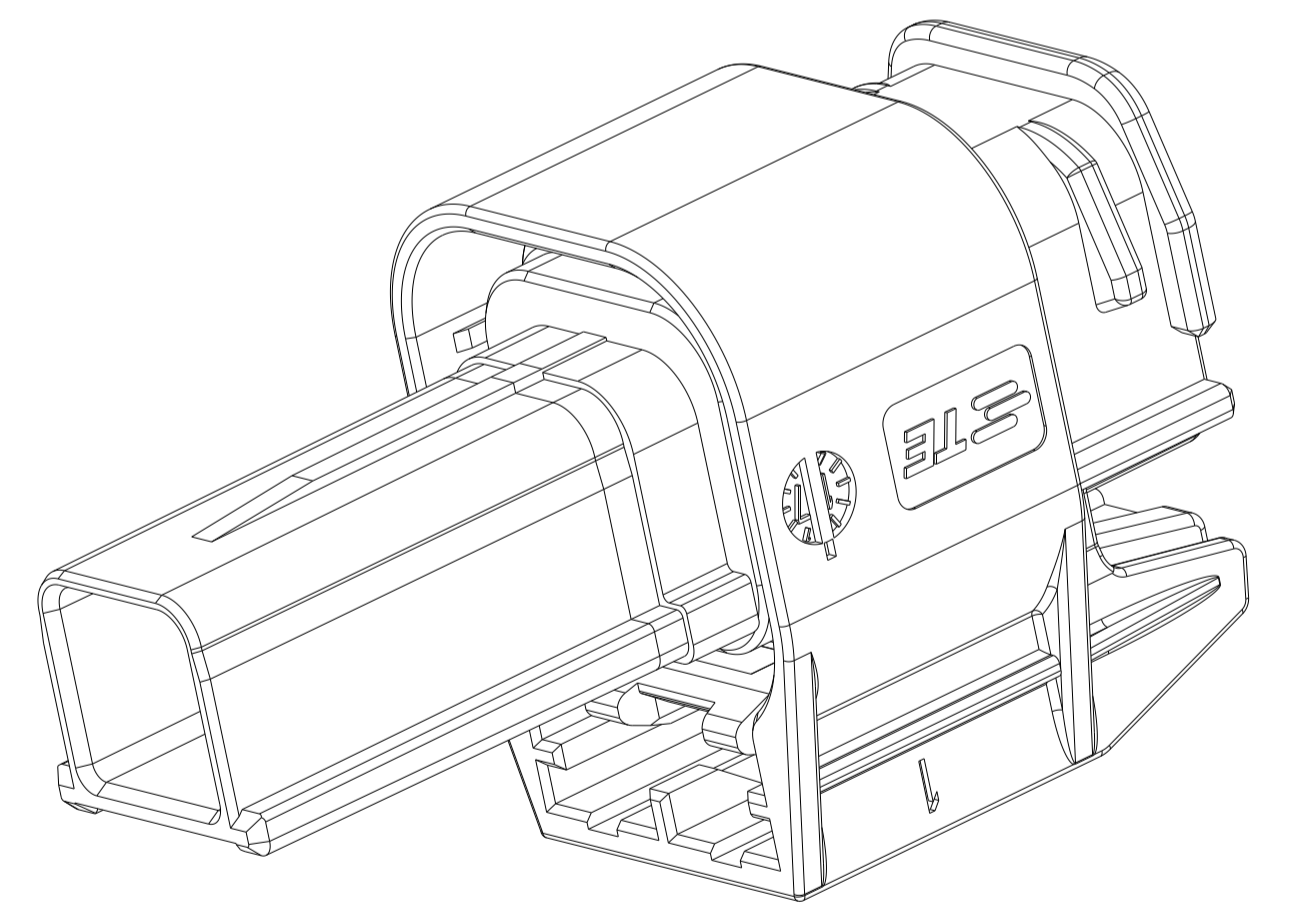
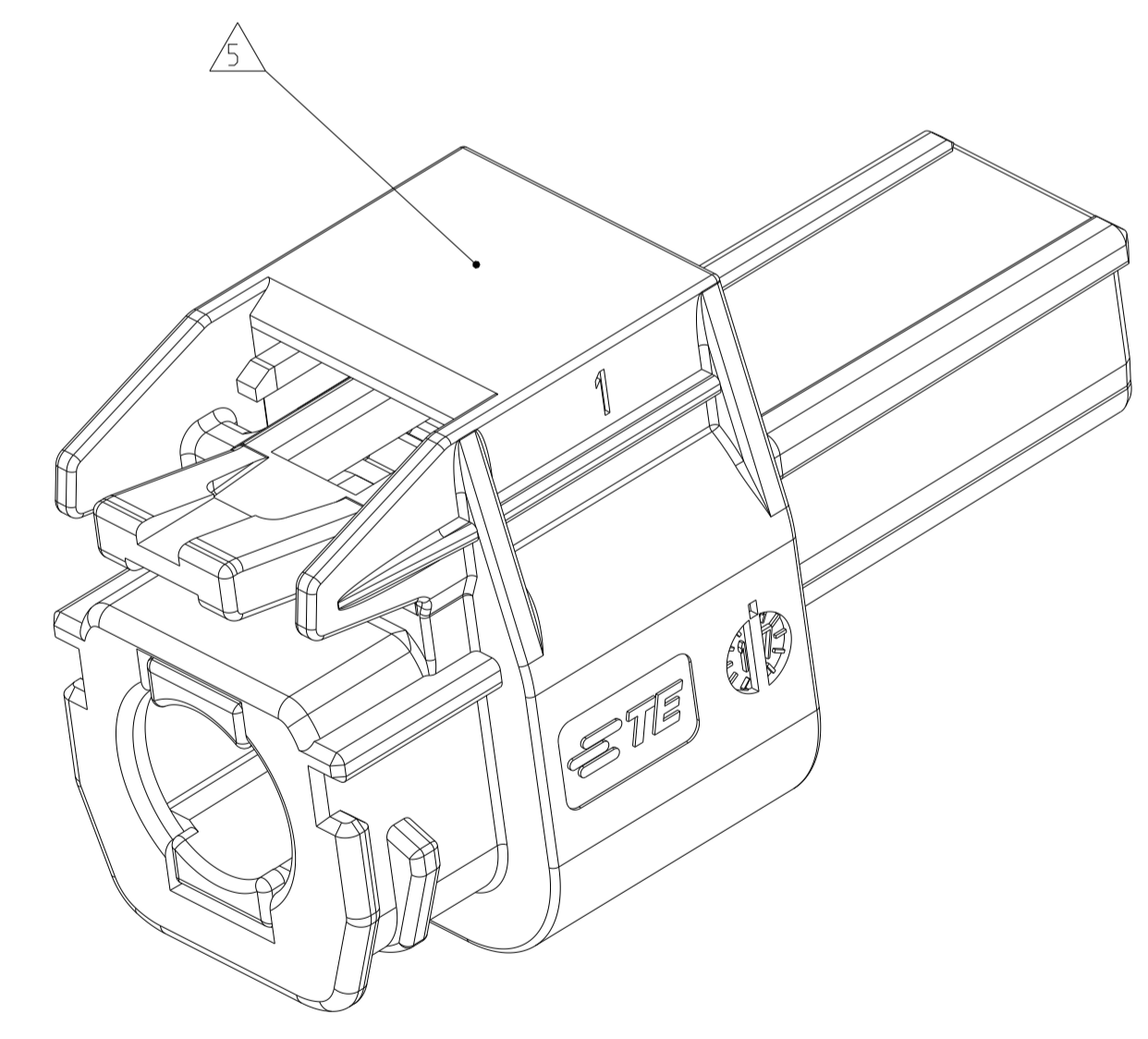
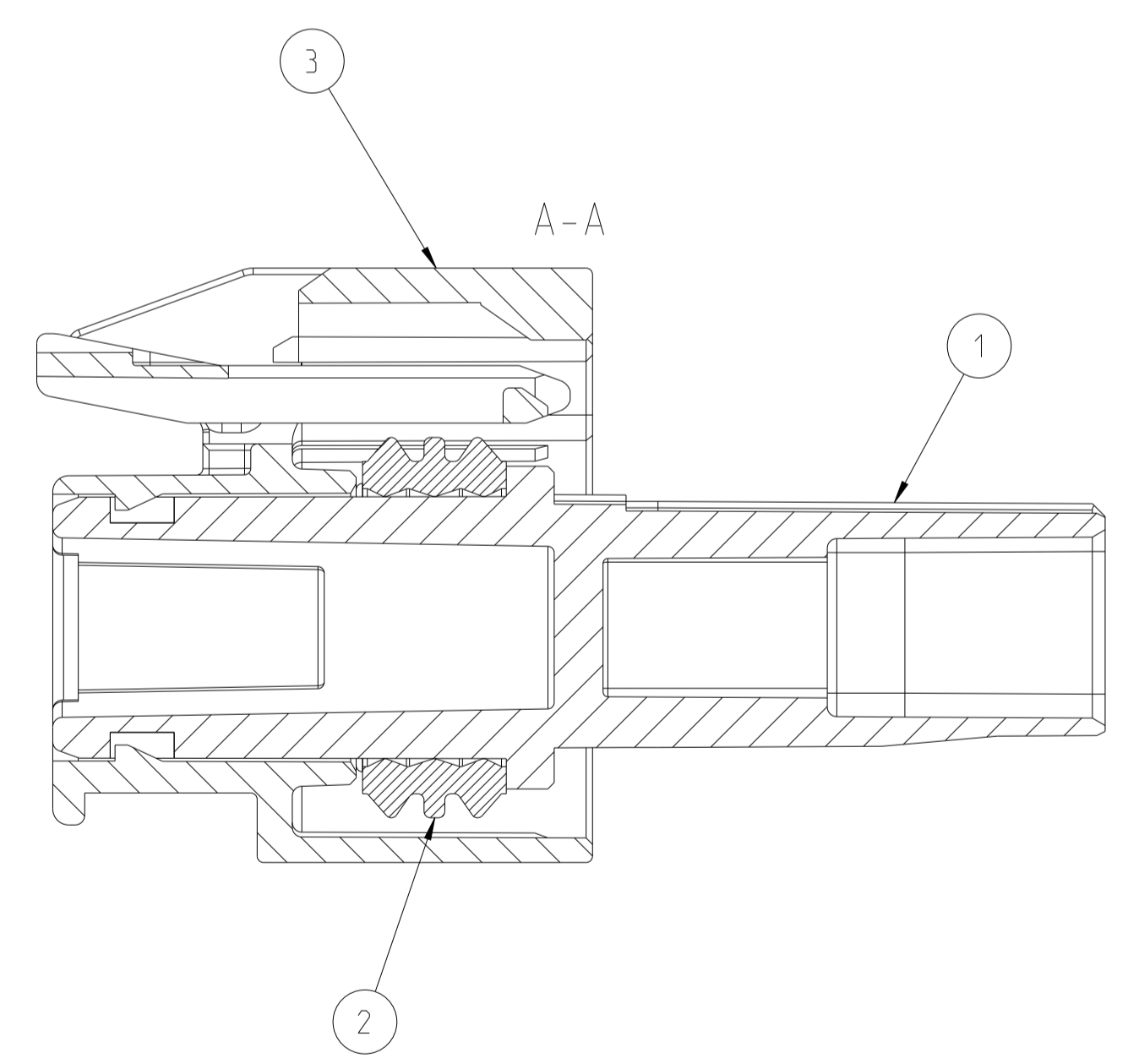


REVISIONS				
P	LTN	DESCRIPTION	DATE	APPROV
A		NEW DRAWING	18MAR2019	RS JB
A1		Printing Adjusted	02JUL2020	SH JB
A2		Appl. Spec. added	27JUL2020	KS JB
A3		Tolerances added	14JAN2022	ARD JB



- NOTES
Bemerkungen
- 1 TE SINGLE PLASTIC PART NUMBER
TE Einzelteilnummer des Kunststoffteiles
 - 2 REVISION OF THE MOLD
Werkzeugänderungsindex
 - 3 MATERIAL MARKING ACCORDING TO VDA 260
Materialkennzeichnung nach VDA 260
 - 4 PRODUCTION DATE, SINGLE PLASTIC PART
Produktionsdatum, Einzelnes Kunststoffteil
 - 5 AREA FOR PRINTING
- TE PN
- ASSEMBLY REVISION
Bereich zum Bedrucken
- TE PN
- Baugruppen Revision
 - 6 INTERFACE ACCORDING TO TE-SPECIFICATION, NO MECHANICAL CODINGS.
208-18013, REV.: A
Schnittstelle ohne mechanische Kodierungen, entspricht TE-Spezifikation 208-18013, Rev.: A. Keine mechanischen Kodierungen
 - 7 SUITABLE TO ALL SEALED MATENET SOCKETS
Passend zu allen gedichteten MATENet Buchsen
 - 8 PACKAGING: LOOSE PIECES IN BAG AND IN CARDBOARD BOX
Verpackt: Schüttgut im Beutel und im Karton



2348651-1	BLACK	PBT-GF10	COVER	1	3
	GREEN	LSR	PERIPHERAL SEAL	1	2
	BLACK	PBT-GF10	SIMPLE PLUG HOUSING	1	1
TE ORDER NO.	COLOR	MATERIAL	DISCRIPTION	QTY.	POS.

DIMENSION AND TOLERANCES ACCORDING TO:
Bemaßungen und Toleranzen gemäß:
DIN EN ISO 8015 (A3) - DIN EN ISO 291

THIS DRAWING IS A CONTROLLED DOCUMENT.		OWN R.SCHMIDT 23JAN2019	TE Connectivity NAME BLIND PLUG, SEALED, MATENet BLINDSTECKER, GEDICHTET, MATENet		
DIMENSIONS: mm		CHK S.HELM 24JAN2019			
DIMENSIONS: mm TOLERANCES UNLESS OTHERWISE SPECIFIED: 0 PLC ± 1 PLC ± 2 PLC ± 3 PLC ± 4 PLC ± ANGLES ± FINISH ±		APPROV J.BARTH 19MAR2019	SIZE A1		
DIMENSIONS: mm TOLERANCES UNLESS OTHERWISE SPECIFIED: 0 PLC ± 1 PLC ± 2 PLC ± 3 PLC ± 4 PLC ± ANGLES ± FINISH ±		PRODUCT SPEC 108-94568 APPLICATION SPEC 114-94431 WEIGHT 3.0g	CAGE CODE 00779 DRAWING NO. C=2348651	RESTRICTED TO -	
MATERIAL		CUSTOMER DRAWING	SCALE 5:1	SHEET 1 OF 1	REV. A3