

4

3

2

1

THIS DRAWING IS UNPUBLISHED.

RELEASED FOR PUBLICATION

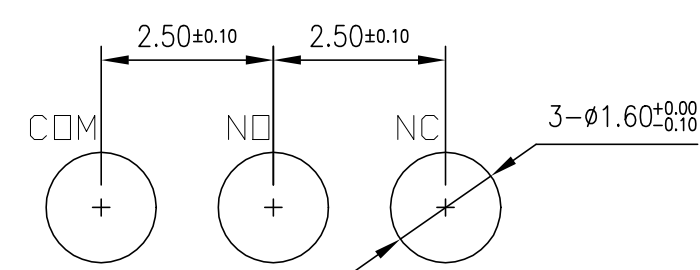
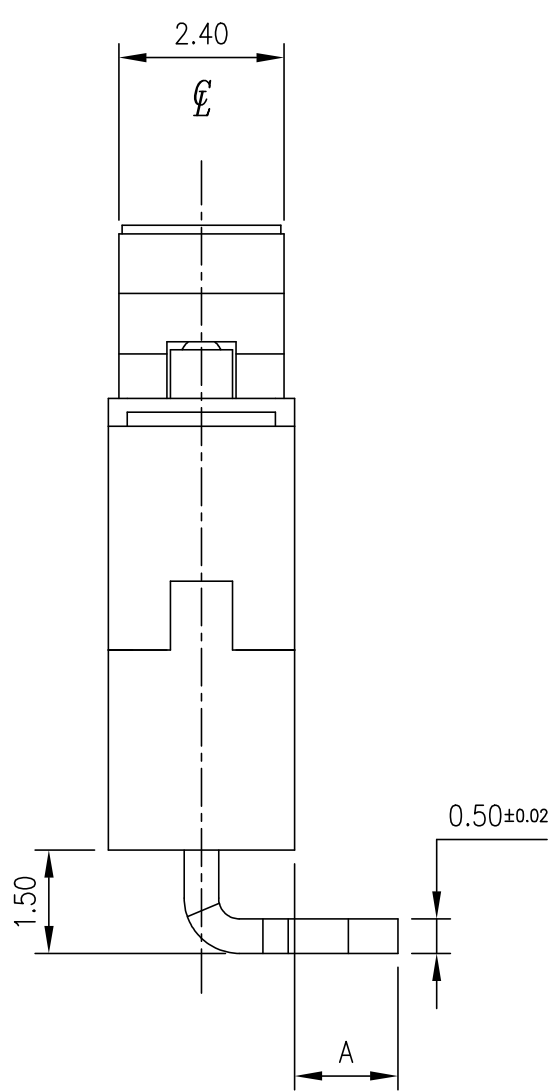
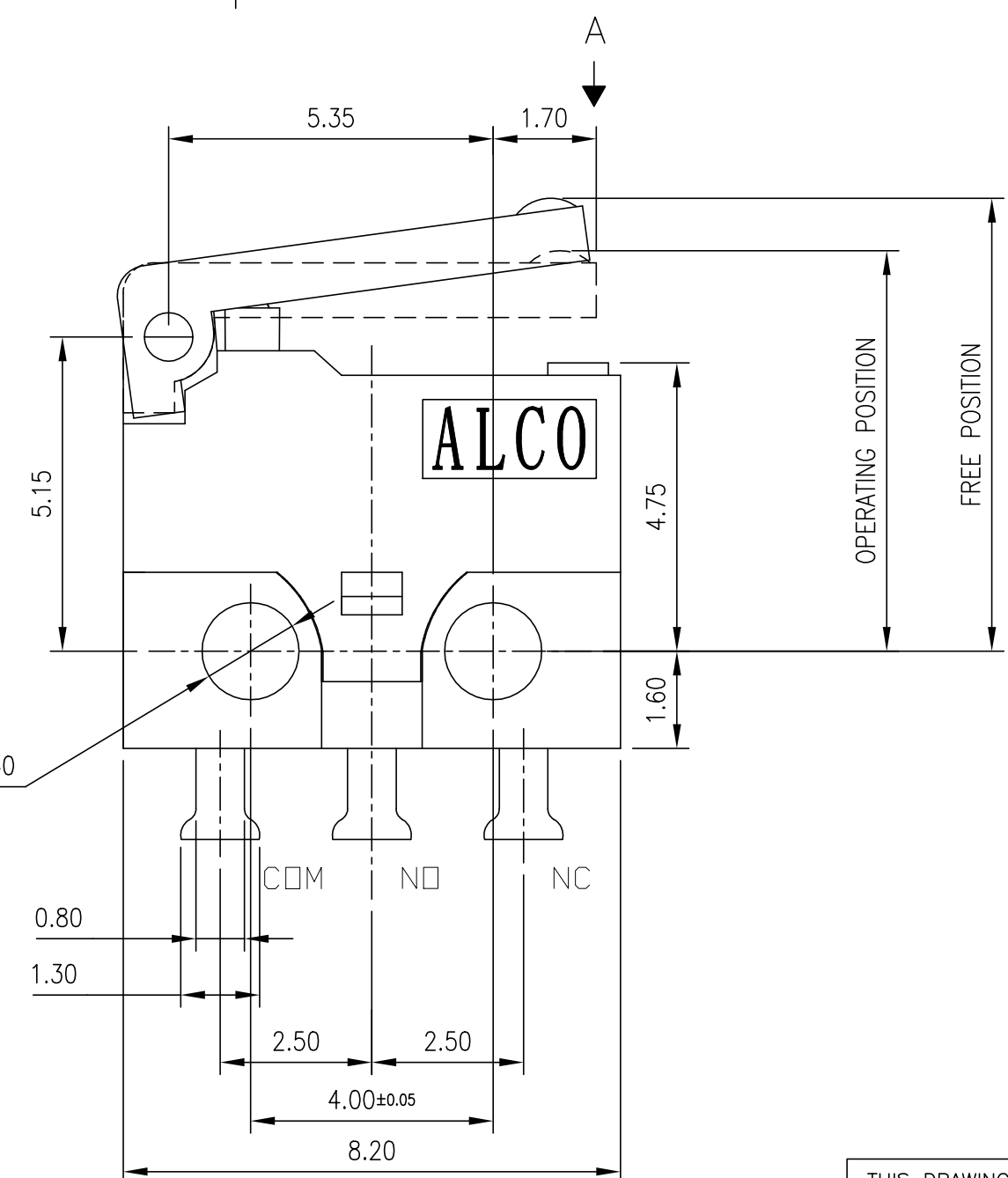
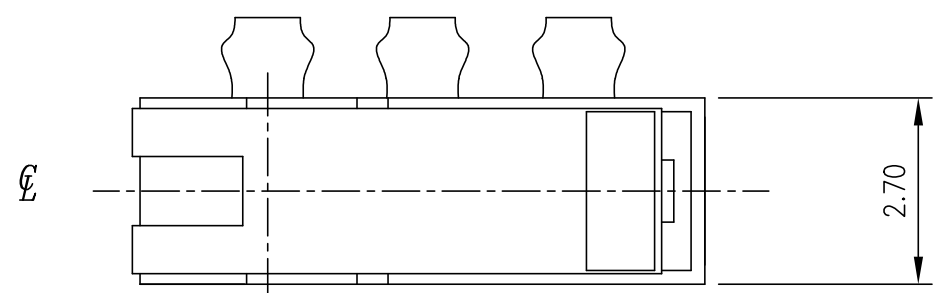
© COPYRIGHT - TE Connectivity Ltd.

ALL RIGHTS RESERVED.

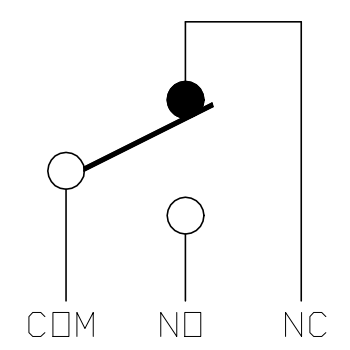
REVISIONS

P	LTR	DESCRIPTION	DATE	DWN	APVD
1		NEW DRAWING	13MAY2019	GCM	AS

APPLICABLE FOR TE P/N
2351461-1
2351461-4



P.C.B. LAYOUT



CIRCUIT DIAGRAM

D

D

C

C

B

B

A

A

THIS DRAWING IS A CONTROLLED DOCUMENT.		DWN	GANESH C M	13MAY2019
DIMENSIONS: mm		CHK	ALEXANDER SHARPE	13MAY2019
TOLERANCES UNLESS OTHERWISE SPECIFIED:		APVD	ALEXANDER SHARPE	13MAY2019
0 PLC	± -	PRODUCT SPEC		
1 PLC	± 0.15	APPLICATION SPEC		
2 PLC	± 0.15	WEIGHT -		
3 PLC	± -	CUSTOMER DRAWING		
4 PLC	± -	SCALE NTS		
ANGLES	± -	SHEET 1 of 4		
MATERIAL -	FINISH -	REV 1		

TE TE Connectivity Ltd.

NAME SWITCH, MINIATURE SNAP ACTION, HINGE LEVER, RIGHT ANGLE, RIGHT, TERMINALS

SIZE	CAGE CODE	DRAWING NO	RESTRICTED TO
A3	00779	C=2351461	-

PRELIMINARY

4

3

2

1

THIS DRAWING IS UNPUBLISHED.

RELEASED FOR PUBLICATION

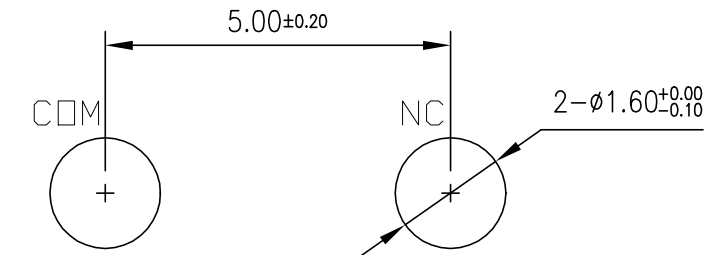
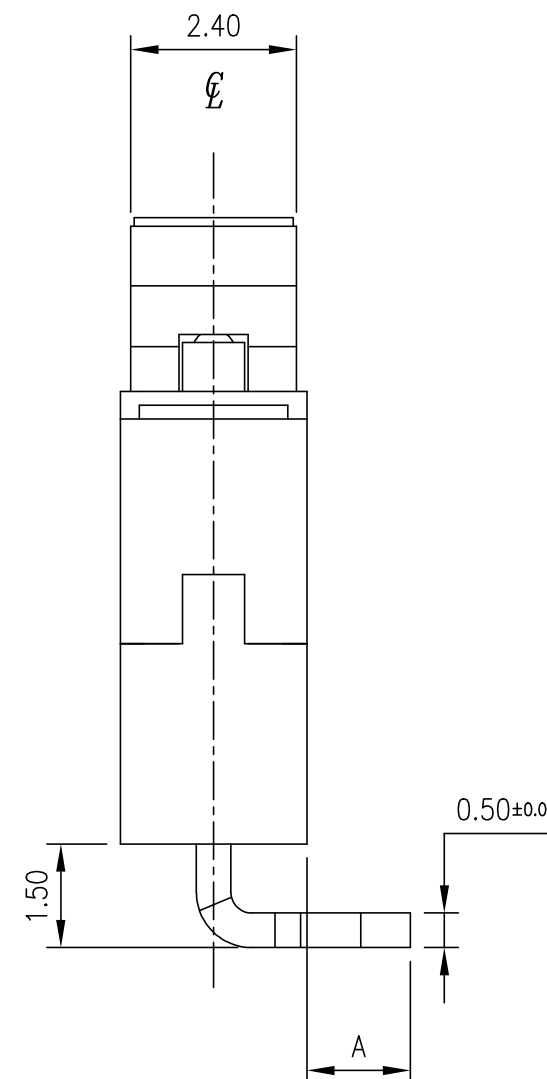
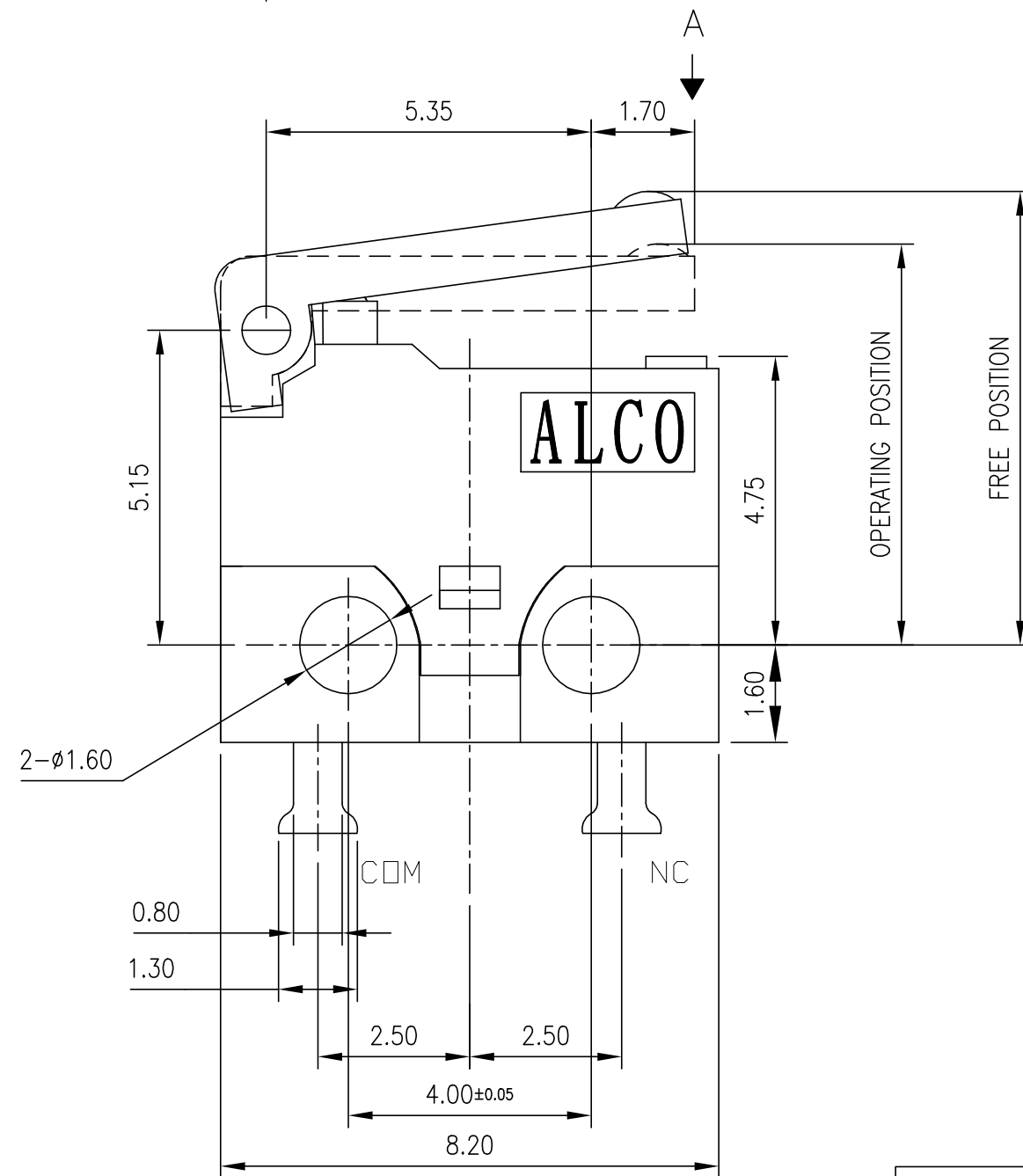
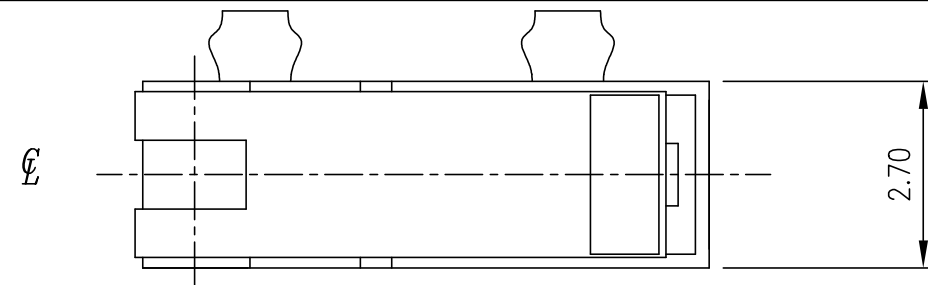
REVISIONS

© COPYRIGHT - TE Connectivity Ltd.

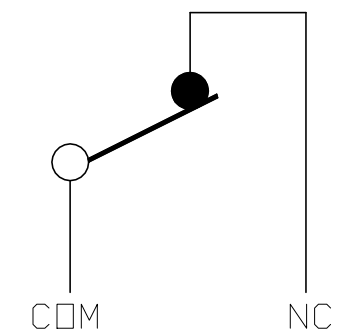
ALL RIGHTS RESERVED.

P	LTR	DESCRIPTION	DATE	DWN	APVD
-	-	SEE SHEET 1	-	-	-

APPLICABLE FOR TE P/N
2351461-2
2351461-5



P.C.B. LAYOUT



CIRCUIT DIAGRAM

THIS DRAWING IS A CONTROLLED DOCUMENT.		DWN GANESH C M 13MAY2019	TE TE Connectivity Ltd.	
DIMENSIONS: mm		CHK ALEXANDER SHARPE 13MAY2019		
TOLERANCES UNLESS OTHERWISE SPECIFIED:		APVD ALEXANDER SHARPE 13MAY2019	NAME SWITCH, MINIATURE SNAP ACTION, HINGE LEVER, RIGHT ANGLE, RIGHT, TERMINALS	
0 PLC ± -		PRODUCT SPEC	SIZE A3	
1 PLC ± 0.15		APPLICATION SPEC	CAGE CODE 00779	DRAWING NO C=2351461
2 PLC ± 0.15		WEIGHT	RESTRICTED TO	
3 PLC ± -		CUSTOMER DRAWING	-	
4 PLC ± -		SCALE NTS	SHEET 2 of 4	REV 1
ANGLES ± -				
FINISH				
MATERIAL				

PRELIMINARY

4

3

2

1

THIS DRAWING IS UNPUBLISHED.

RELEASED FOR PUBLICATION

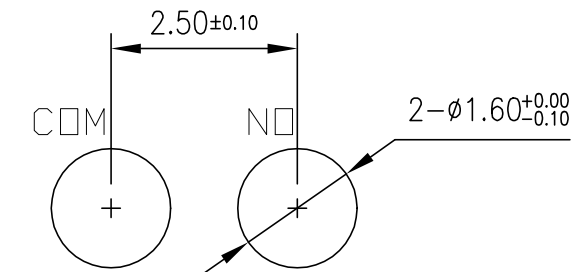
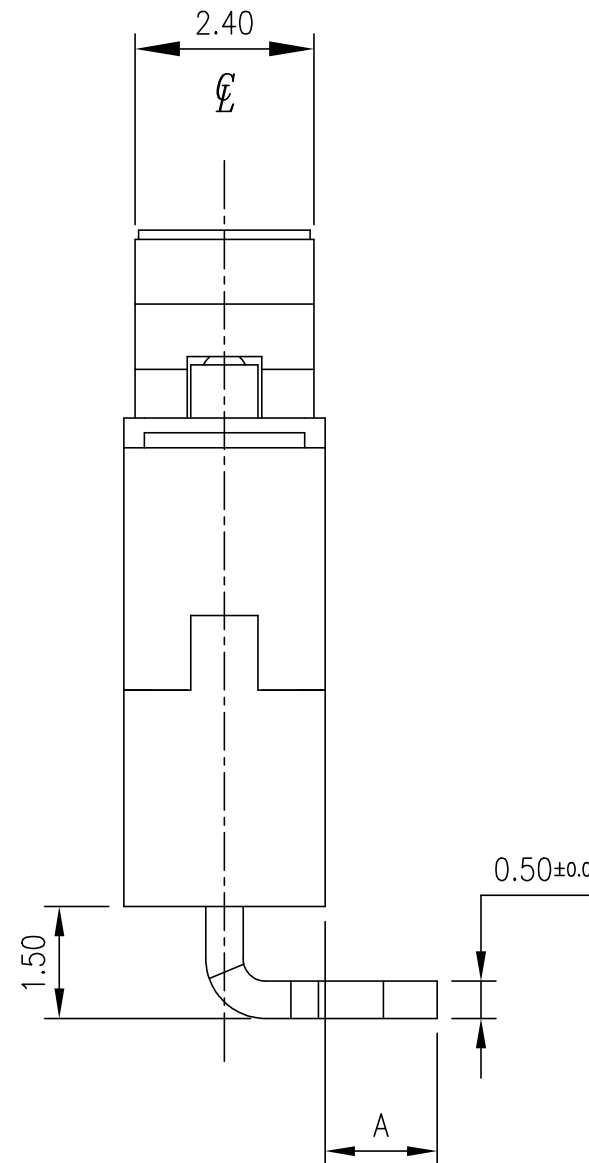
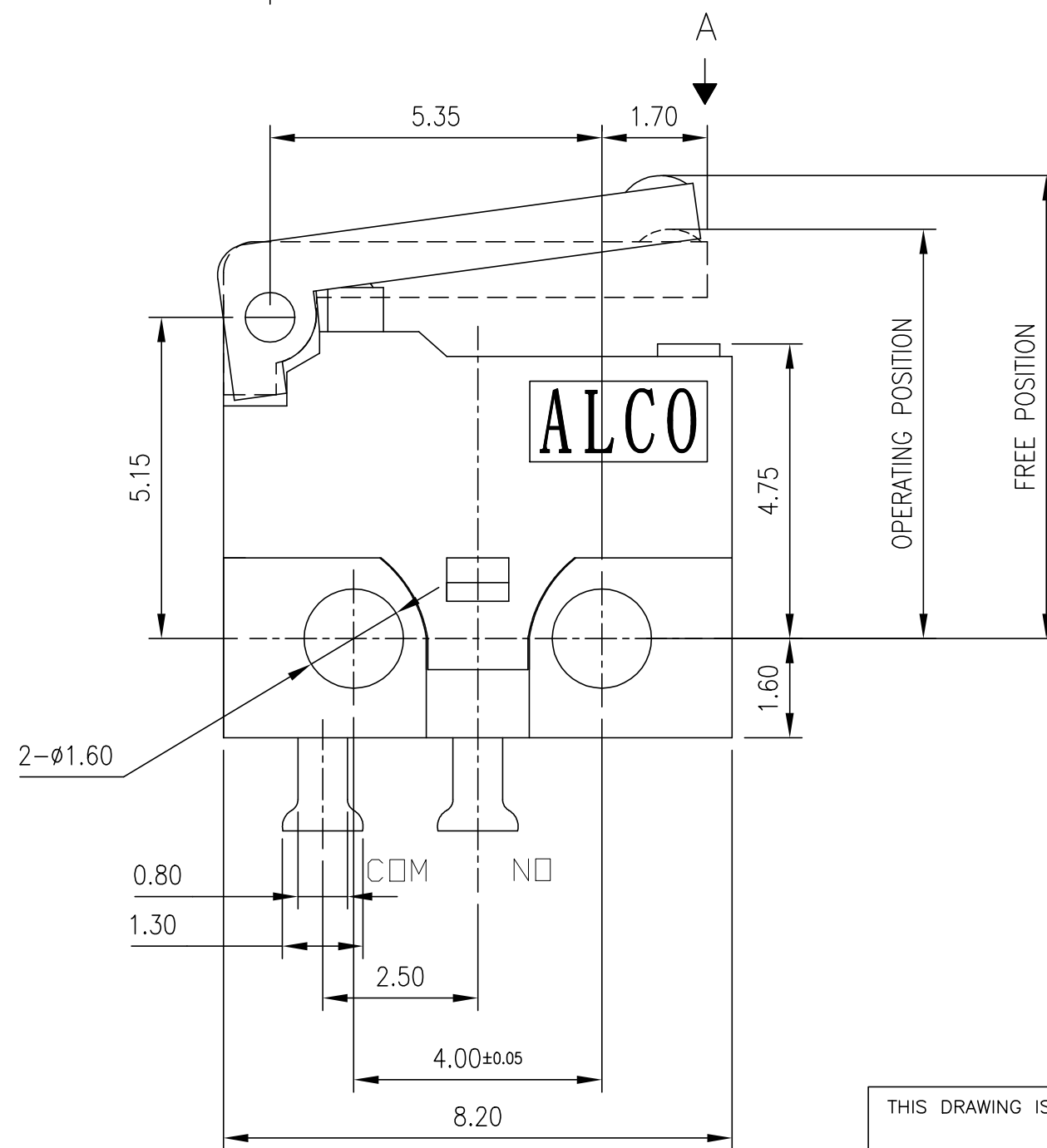
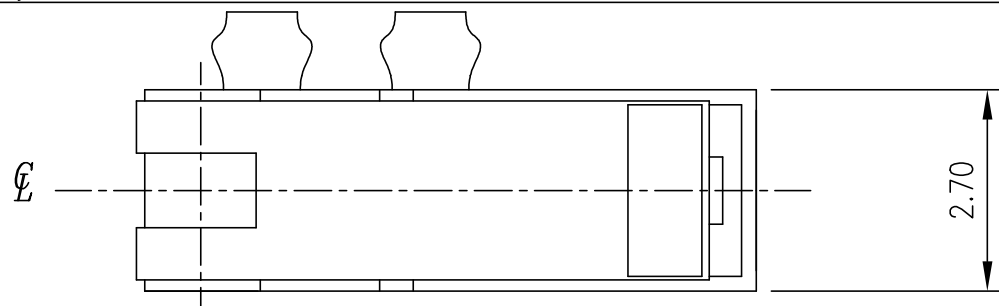
© COPYRIGHT - TE Connectivity Ltd.

ALL RIGHTS RESERVED.

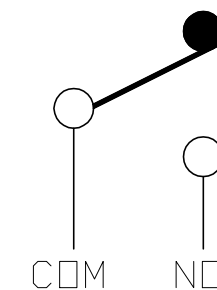
REVISIONS

P	LTR	DESCRIPTION	DATE	DWN	APVD
-	-	SEE SHEET 1	-	-	-

APPLICABLE FOR TE P/N
2351461-3
2351461-6



P.C.B. LAYOUT



CIRCUIT DIAGRAM

THIS DRAWING IS A CONTROLLED DOCUMENT.

DWN GANESH C M 13MAY2019

CHK ALEXANDER SHARPE 13MAY2019

APVD ALEXANDER SHARPE 13MAY2019

PRODUCT SPEC

APPLICATION SPEC

WEIGHT -

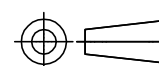
CUSTOMER DRAWING

TE TE Connectivity Ltd.

NAME SWITCH, MINIATURE SNAP ACTION, HINGE LEVER, RIGHT ANGLE, RIGHT, TERMINALS

SIZE	CAGE CODE	DRAWING NO	RESTRICTED TO
A3	00779	2351461	-

DIMENSIONS: mm



TOLERANCES UNLESS OTHERWISE SPECIFIED:

0 PLC	± -
1 PLC	± 0.15
2 PLC	± 0.15
3 PLC	± -
4 PLC	± -
ANGLES	± -
FINISH	-

MATERIAL -

FINISH -

PRELIMINARY

THIS DRAWING IS UNPUBLISHED.

RELEASED FOR PUBLICATION

REVISIONS

© COPYRIGHT - TE Connectivity Ltd.

ALL RIGHTS RESERVED.

P	LTR	DESCRIPTION	DATE	DWN	APVD
-	-	SEE SHEET 1	-	-	-

NOTES:

- OPERATING CHARACTERISTICS ARE FOR OPERATION IN THE A DIRECTION ↓
- PACKAGING:
SWITCHES ARE BULK PACKAGED IN BAGS, 500 SWITCHES PER BAG, 2 BAGS PER BOX.
- COMPLIANCE:
THE CURRENT STATEMENT OF COMPLIANCE IS AVAILABLE AT TE.COM.
- MATERIAL AND FINISH:
COVER: THERMOPLASTIC, BLACK
BASE: THERMOPLASTIC, BLACK
BUTTON: THERMOPLASTIC, BLACK
CONTACT: SILVER ALLOY
TERMINAL: BRASS, SILVER PLATED
SPRING PLATE: COPPER ALLOY
LEVER: THERMOPLASTIC, BLACK
- SPECIFICATIONS:
CURRENT RATING: SEE TABLE
CONTACT RESISTANCE: 100mΩ MAXIMUM, INITIAL, AT FREE POSITION AND TOTAL TRAVEL POSITION
INSULATION RESISTANCE: 100MΩ MINIMUM, @ 100 V DC, 1 MINUTE, INITIAL.
DIELECTRIC WITHSTANDING VOLTAGE, BETWEEN TERMINALS OF THE SAME POLARITY: 250 V AC, 50 TO 60 Hz FOR 1 MINUTE
DIELECTRIC WITHSTANDING VOLTAGE, BETWEEN EACH TERMINAL AND GROUND: 250 V AC, 50 TO 60 Hz FOR 1 MINUTE
DIELECTRIC WITHSTANDING VOLTAGE, BETWEEN EACH TERMINAL AND NON-CURRENT CARRYING METAL PART :1500 V AC, 50 TO 60 Hz FOR 1 MINUTE
- SOLDER PROCESS:
MANUAL SOLDERING: 350°C, 3 SECONDS MAXIMUM, 30 TO 40 WATTS. PREVENT SOLDER AND FLUX CONTACTING THE SWITCH BODY.
DO NOT OPERATE THE SWITCH DURING THE FIRST MINUTE AFTER SOLDERING.
WAVE SOLDERING: 260°C, 5 SECONDS MAXIMUM. PREVENT SOLDER AND FLUX CONTACTING THE SWITCH BODY.
DO NOT OPERATE THE SWITCH DURING THE FIRST MINUTE AFTER SOLDERING.

CONTACT FINISH	CONTACT FORM	MECHANICAL LIFE	ELECTRICAL LIFE	STORAGE TEMPERATURE RANGE/HUMIDITY RANGE	OPERATING TEMPERATURE RANGE/HUMIDITY RANGE	MOVEMENT DIFFERENTIAL	OVERTRAVEL	PRETRAVEL	OPERATING POSITION	FREE POSITION	RELEASE FORCE	OPERATING FORCE	CONTACT RATING	CONTACT CONFIGURATION	DIMENSION "A"	TERMINAL TYPE	TE SMART PART NUMBER	PART NUMBER
SILVER	SPST, NORMALLY OPEN	100,000 CYCLES, MINIMUM	50,000 CYCLES, MINIMUM	-40 TO +85°C/85% RELATIVE HUMIDITY MAXIMUM	-40 TO +85°C/60% RELATIVE HUMIDITY MAXIMUM	0.70 MAXIMUM	0.30 MINIMUM	1.80 MAXIMUM	6.7±0.5	8.0 MAXIMUM	3 gf MINIMUM	50 gf MAXIMUM	0.5A, 30V DC	MOMENTARY	3.10	RIGHT ANGLE, RIGHT	SAJ405XHL0N30SNOLRQ	2351461-6
	SPST, NORMALLY CLOSED																SAJ405XHL0N30SNCLRQ	2351461-5
	SPDT																SAJ405XHL0N30SDTLRQ	2351461-4
	SPST, NORMALLY OPEN																SAJ405XHL0N30SNOSRQ	2351461-3
	SPST, NORMALLY CLOSED																SAJ405XHL0N30SNCSRQ	2351461-2
	SPDT																SAJ405XHL0N30SDTSRQ	2351461-1

THIS DRAWING IS A CONTROLLED DOCUMENT.

DWN 13MAY2019 GANESH C M

CHK 13MAY2019 ALEXANDER SHARPE

APVD 13MAY2019 ALEXANDER SHARPE

PRODUCT SPEC

APPLICATION SPEC

WEIGHT

CUSTOMER DRAWING



TE Connectivity Ltd.

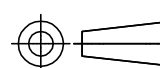
NAME SWITCH, MINIATURE SNAP ACTION, HINGE LEVER, RIGHT ANGLE, RIGHT, TERMINALS

SIZE CAGE CODE DRAWING NO RESTRICTED TO

A3 00779 C=2351461

SCALE NTS SHEET 4 of 4 REV 1

DIMENSIONS: mm



TOLERANCES UNLESS OTHERWISE SPECIFIED:

0 PLC	± -
1 PLC	± 0.15
2 PLC	± 0.15
3 PLC	± -
4 PLC	± -
ANGLES	± -

MATERIAL FINISH

PRELIMINARY