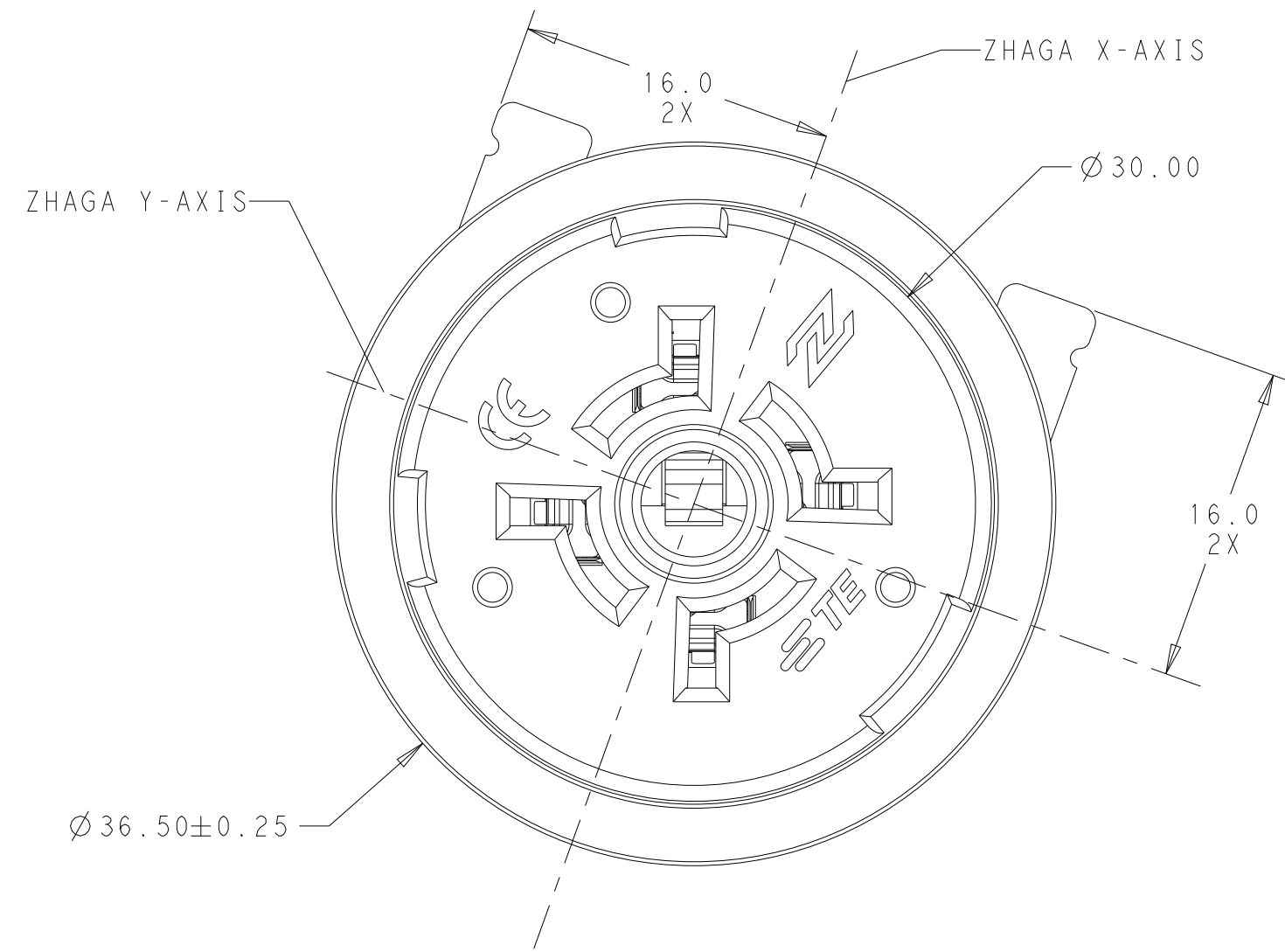
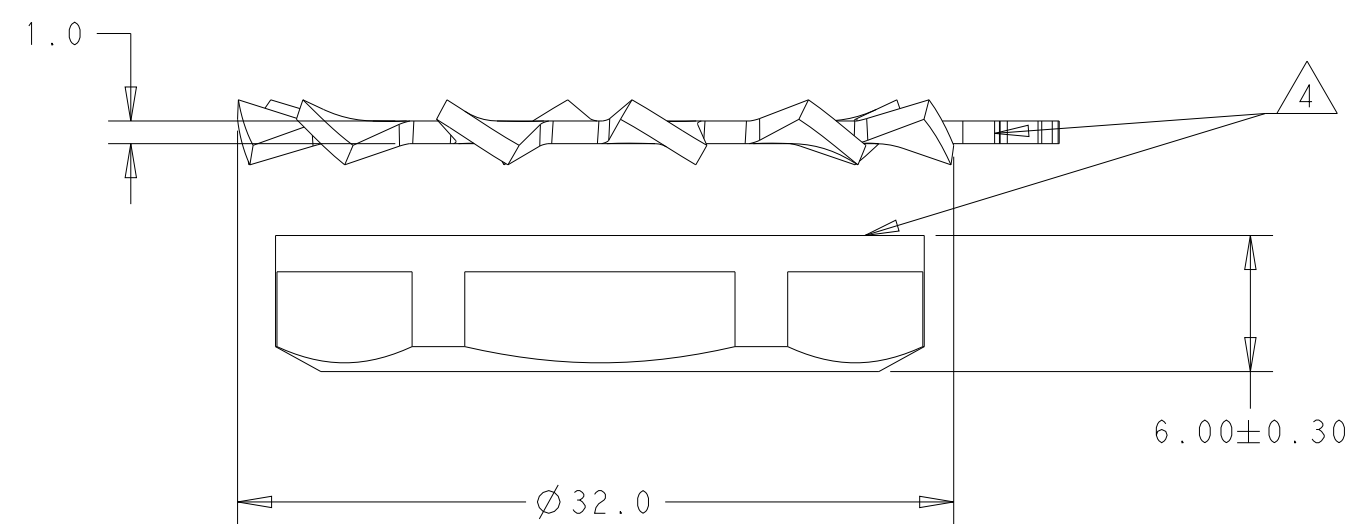
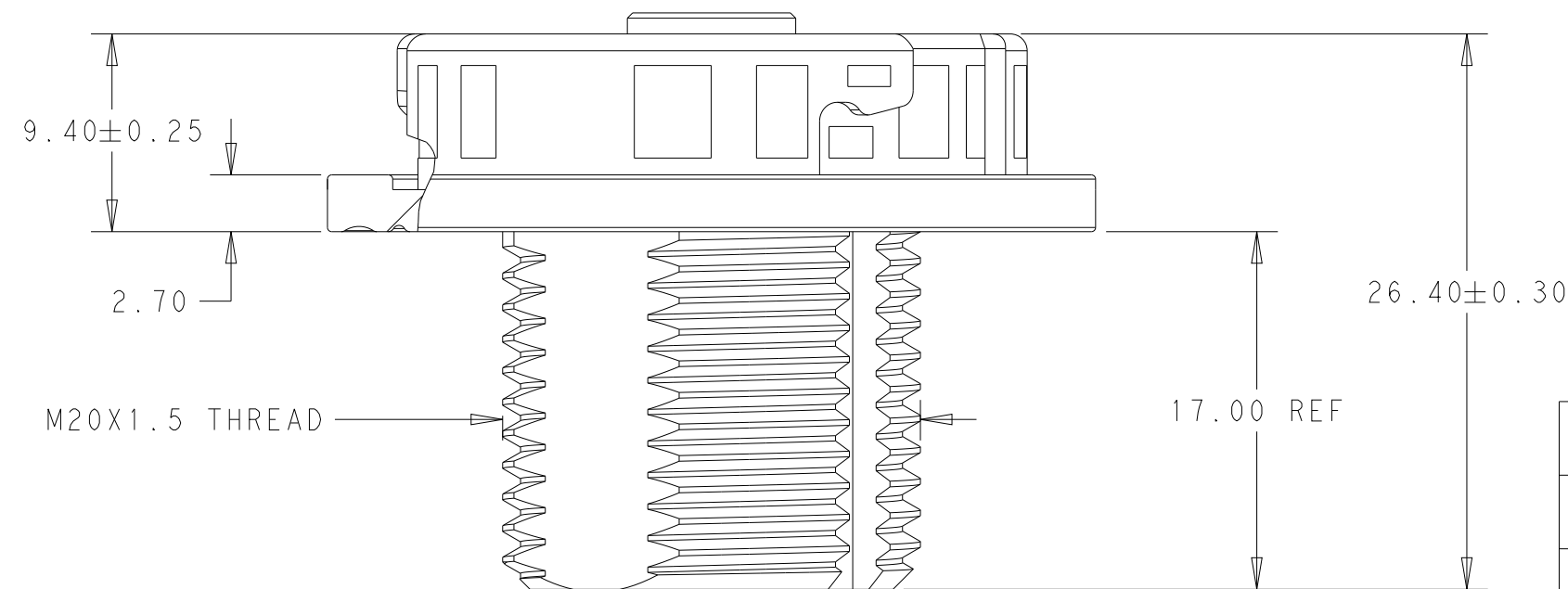


P	LTR	DESCRIPTION	DATE	DWN	APVD
A1		ECR-21-105276	17JUN2021	CD	CD
A2		ECR-21-116069	04OCT2021	CD	CD
A3		REVISED PER ECN-24-287248	03OCT2024	JPS	MM
A4		REVISED PER ECN-24-288242	10OCT2024	JPS	MM

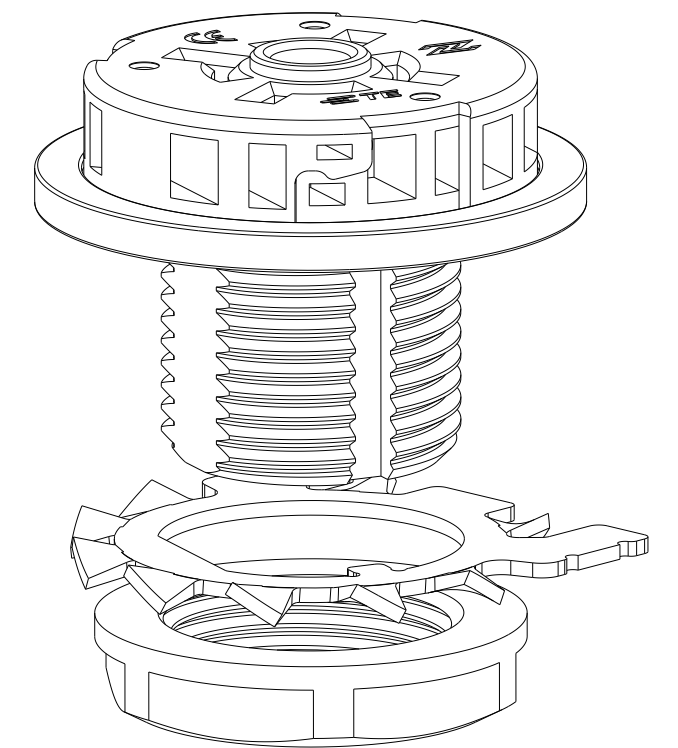


2363638-1  
SHOWN



SEE SHEET 2 FOR  
BOTTOM DETAIL

1. MATERIALS AND FINISH:
  - RECEPTACLE HOUSING: PBT, COLOR: BLACK
  - NUT: NYLON, COLOR: BLACK
  - CONTACTS: COPPER ALLOY, FINISH: Sn OVER Ni
  - SEAL: SILICON, COLOR: BLACK
  - STAR WASHER: STAINLESS STEEL
2. MUST COMPLY WITH DIRECTIVE 2002/95/EC (ROHS)
3. WIRE SIZE: 20-18AWG; MAX INSULATION OD: Ø2.25; MAX WIRE OD: Ø1.30  
STRIP LENGTH: 11.0±1.0
4. LOCK WASHER (REF P/N: 2363815-1 OR 2393258-1) AND NUT (REF P/N: 2374786-1)  
NOT ASSEMBLED, SHIPPED BULK PACKED.
5. ZHAGA BOOK 18 COMPLIANT
6. THIS PRODUCT HAS NOT COMPLETED VALIDATION TESTING
7. RECEPTACLE AND GASKET ONLY; NO NUT OR LOCK WASHER

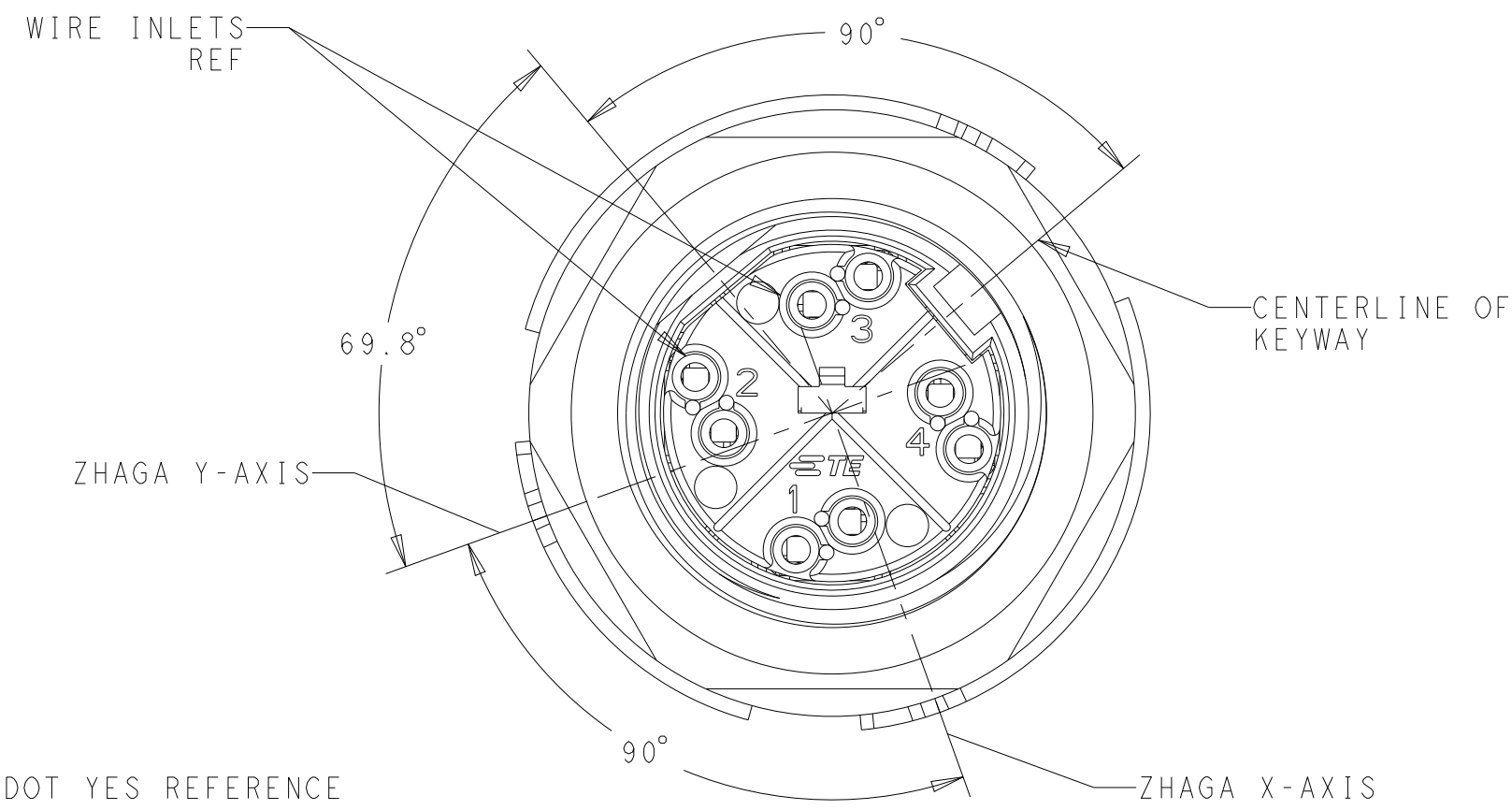


2363638-1  
SHOWN

WINGED	2213831-X	2213837-X	2213795-X	YES	NO KEY	4 5	4-2363638-1
ROUND	X-2343404-X	2343405-X	2341474-X	NONE	KEY POSITION A	4	2-2363638-2
ROUND	2213831-X	2213837-X	2213795-X	NONE	NO KEY	4 5	2-2363638-1
NONE	X-2343404-X	2343405-X	2341474-X	YES	KEY POSITION A	7	1-2363638-6
NONE	2213831-X	2213837-X	2213795-X	YES	NO KEY	7 5	1-2363638-5
WINGED	X-2343404-X	2343405-X	2341474-X	YES	KEY POSITION A	4	1-2363638-2
WINGED	2213831-X	2213837-X	2213795-X	YES	NO KEY	4 5	1-2363638-1
NONE	X-2343404-X	2343405-X	2341474-X	NONE	KEY POSITION A	7	2363638-6
NONE	2213831-X	2213837-X	2213795-X	NONE	NO KEY	7 5	2363638-5
WINGED	X-2343404-X	2343405-X	2341474-X	NONE	KEY POSITION A	4	2363638-2
WINGED	2213831-X	2213837-X	2213795-X	NONE	NO KEY	4 5	2363638-1
WASHER STYLE	80mm MODULE	40mm MODULE	SEALING CAP	COLOR DOTS	KEYING POSITION		PART NO

THIS DRAWING IS A CONTROLLED DOCUMENT.		DWN C DAILY	18NOV2019	TE Connectivity	
		CHK C DAILY	18NOV2019		
DIMENSIONS: mm		TOLERANCES UNLESS OTHERWISE SPECIFIED:		NAME RECEPTACLE ASSEMBLY, LUMAWISE ENDURANCE S2	
		0 PLC ± 1 PLC ±0.2 2 PLC ±0.13 3 PLC ± 4 PLC ± ANGLES ±1° FINISH -		PRODUCT SPEC 108-160194 APPLICATION SPEC 114-160106 WEIGHT -	
MATERIAL -		CUSTOMER DRAWING		SIZE A2	CAGE CODE 00779
		SCALE 3:1		SHEET 1 OF 2	REV A4

REVISIONS					
P	LTR	DESCRIPTION	DATE	DWN	APVD
-		SEE SHEET 1	-	-	-

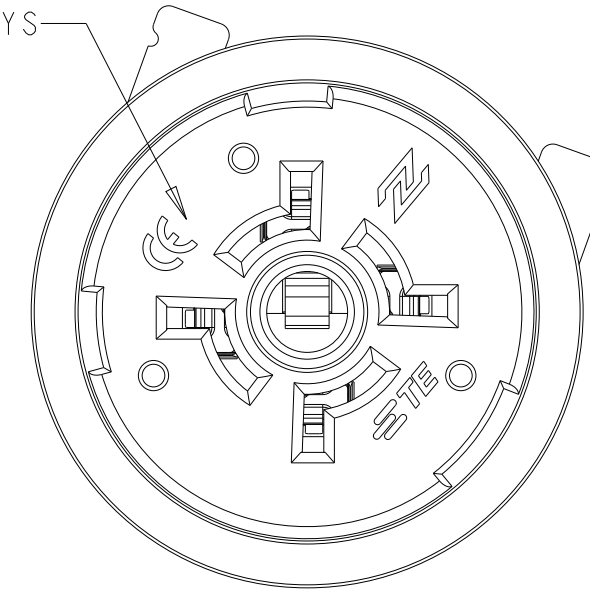


COLOR DOT YES REFERENCE

POSITION 1	RED	ORANGE
POSITION 2	BLACK	GRAY
POSITION 3	PURPLE	PURPLE
POSITION 4	NONE	NONE
P/N:	STANDARD	4--1

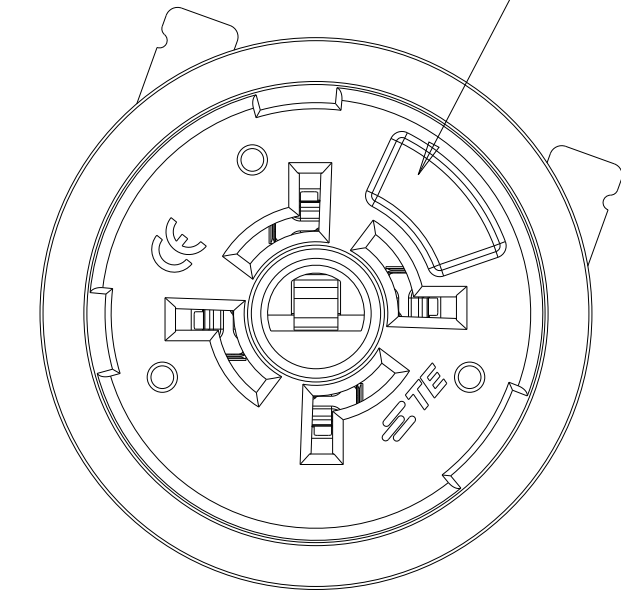
BOTTOM VIEW  
(GASKET, NUT AND WASHER NOT SHOWN FOR CLARITY)

NOTE: NO KEYS

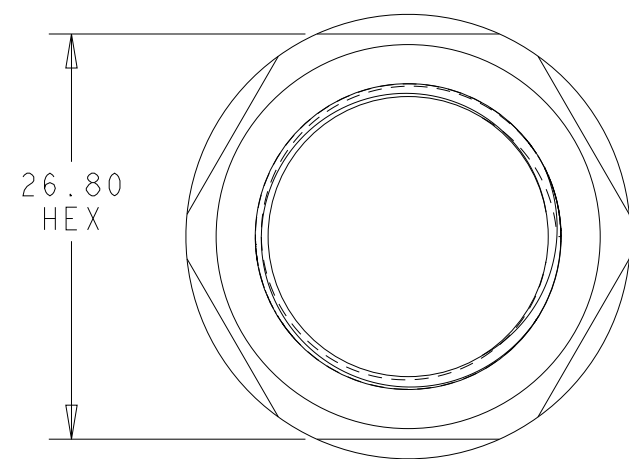


2363638-1, 1-2363638-1 AND  
4-2363638-1  
NO KEY POSITION  
SCALE 2:1

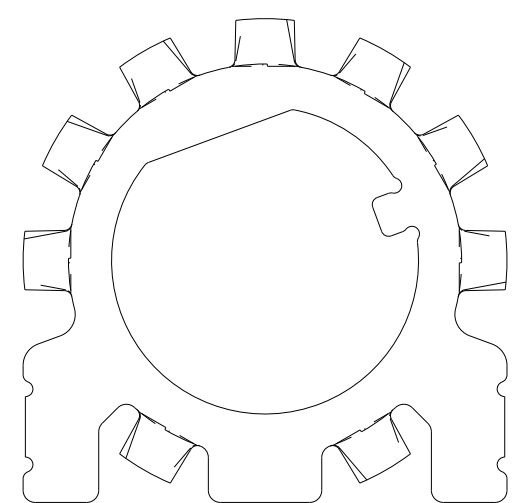
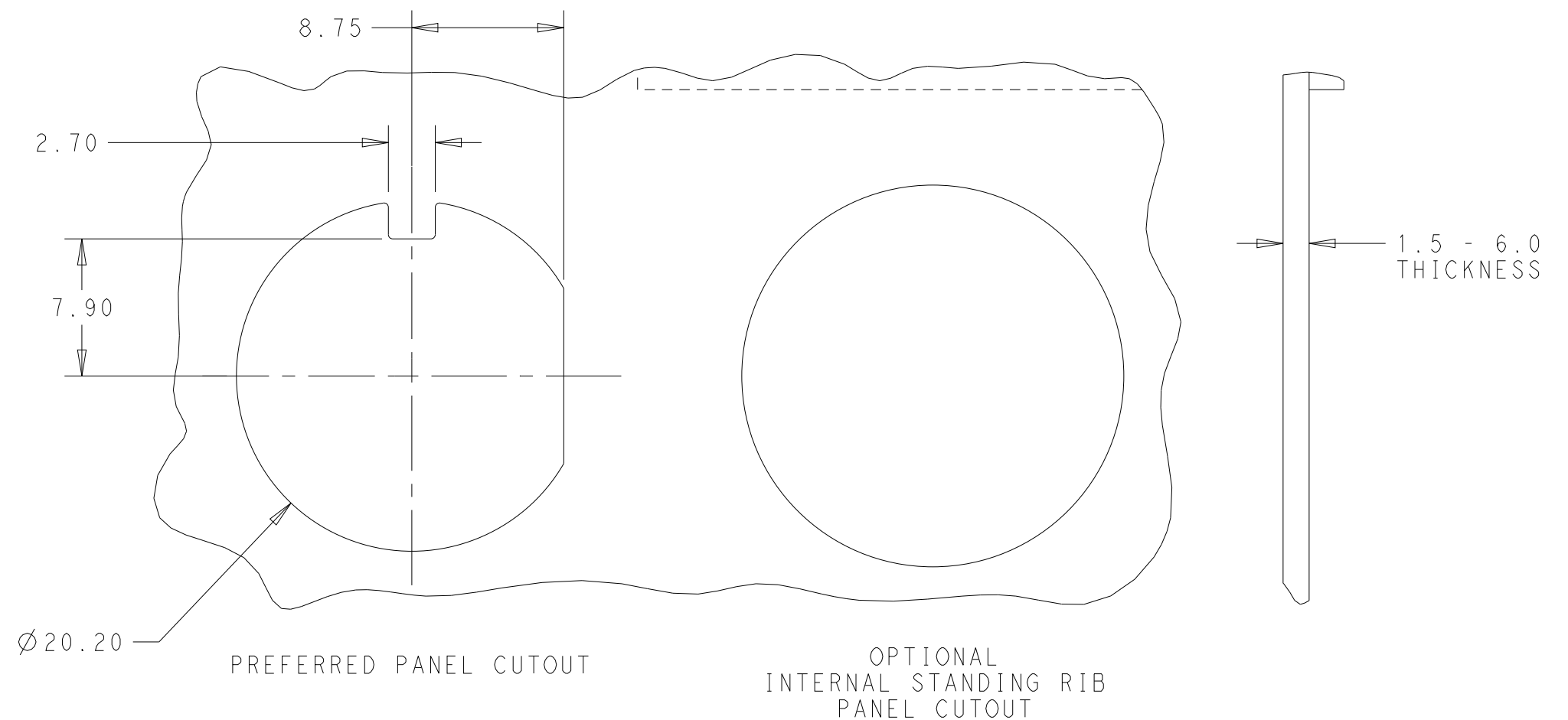
NOTE: KEY



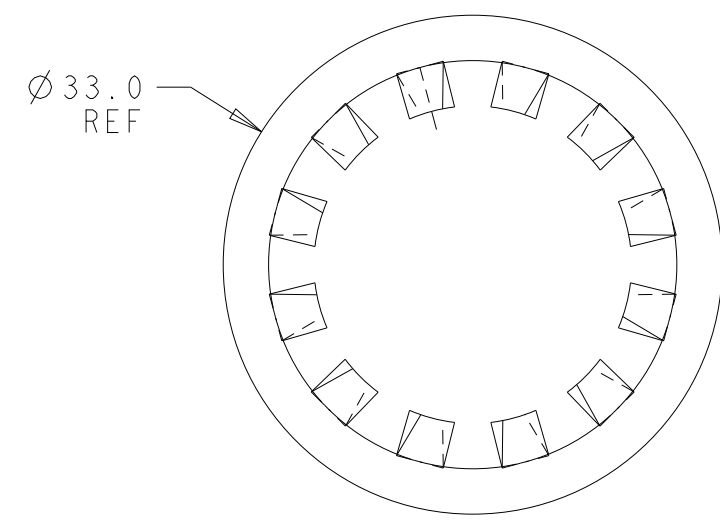
2363638-2, -6, 1--2, 1--6 AND 2--2  
KEY POSITION A  
SCALE 2:1



LOCKING NUT DETAIL  
SCALE 2:1



WINGED WASHER (REF)  
2363815-1  
SCALE 2:1



ROUND WASHER (REF)  
2393258-1  
SCALE 2:1

THIS DRAWING IS A CONTROLLED DOCUMENT.		DWN C DAILY 18NOV2019	TE Connectivity	
		CHK C DAILY 18NOV2019		
DIMENSIONS: mm		APVD -		NAME RECEPTACLE ASSEMBLY, LUMAWISE ENDURANCE S2
TOLERANCES UNLESS OTHERWISE SPECIFIED:		PRODUCT SPEC 108-160194		SIZE -
0 PLC ±		APPLICATION SPEC 114-160106		CAGE CODE A200779
1 PLC ±0.2		WEIGHT -		DRAWING NO C-2363638
2 PLC ±0.13		CUSTOMER DRAWING		RESTRICTED TO -
3 PLC ±		SCALE 3:1		SHEET 2 OF 2
4 PLC ±		REV A4		
ANGLES ±1°				
FINISH -				